

# CERTIFICATE OF LOCATION OF GOVERNMENT CORNER

County of Anoka

State of Minnesota

Witness Corner of Sec. 24 Township 32 Range 23

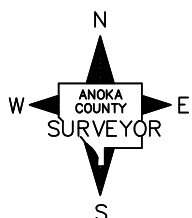
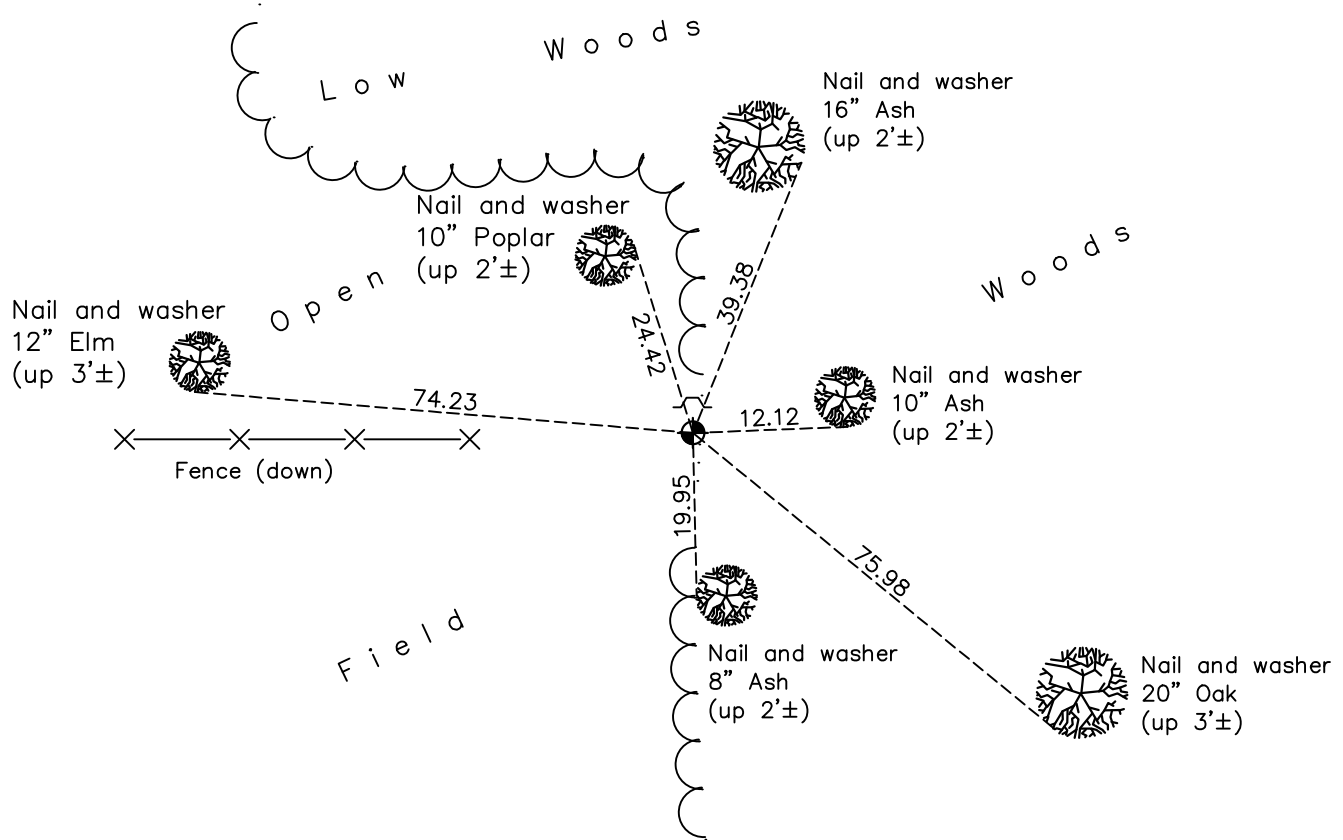
(on north line of NE1/4)

On the 10th day of October, 1988, the described corner was evidenced by area resurvey

and to perpetuate the location of said corner, at the exact location thereof, a permanent marker was placed consisting of a cast iron monument with a sign and post on the north side

AND on the 13th day of April, 2021, said permanent marker was found down 0.5'± and the ties were updated

Updated reference ties are as shown below.



Revision Date  
**7/21/2021**

N.A.D. 1983 Coordinates  
 (1996 Adjustment)

County Project Coordinates	
Northing	<u>179920.6478</u>
Easting	<u>530563.6018</u>
Date	<u>2/14/02</u>

I hereby certify that this United States public land survey monument record is correct and complete to the best of my knowledge and belief.  
David Zieglmeier Date 7/14/22  
 David Zieglmeier Anoka County Surveyor  
 Minnesota License Number 46179

# HISTORY OF GOVERNMENT CORNER

Page No. 65A

County of Anoka

State of Minnesota

Witness Corner of Sec. 24 Township 32 Range 23  
(on north line of NE1/4)

## **CORNER HISTORY:**

October 10, 1988 - Set cast iron monument flush using area resurvey. Established ties to monument. Set sign and post on the north side.

February 14, 2002 - Established NAD 1983 (1996 adj.) Anoka County project coordinates by static GPS methods.

April 4, 2011 - Found cast iron monument down 0.5'± and updated ties.

February 17, 2017 - Found cast iron monument down 0.5'± and updated ties.

April 13, 2021 - Found cast iron monument down 0.5'± and updated ties.