

CERTIFICATE OF LOCATION OF GOVERNMENT CORNER

County of Anoka

State of Minnesota

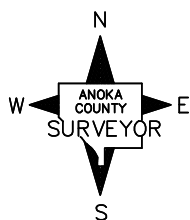
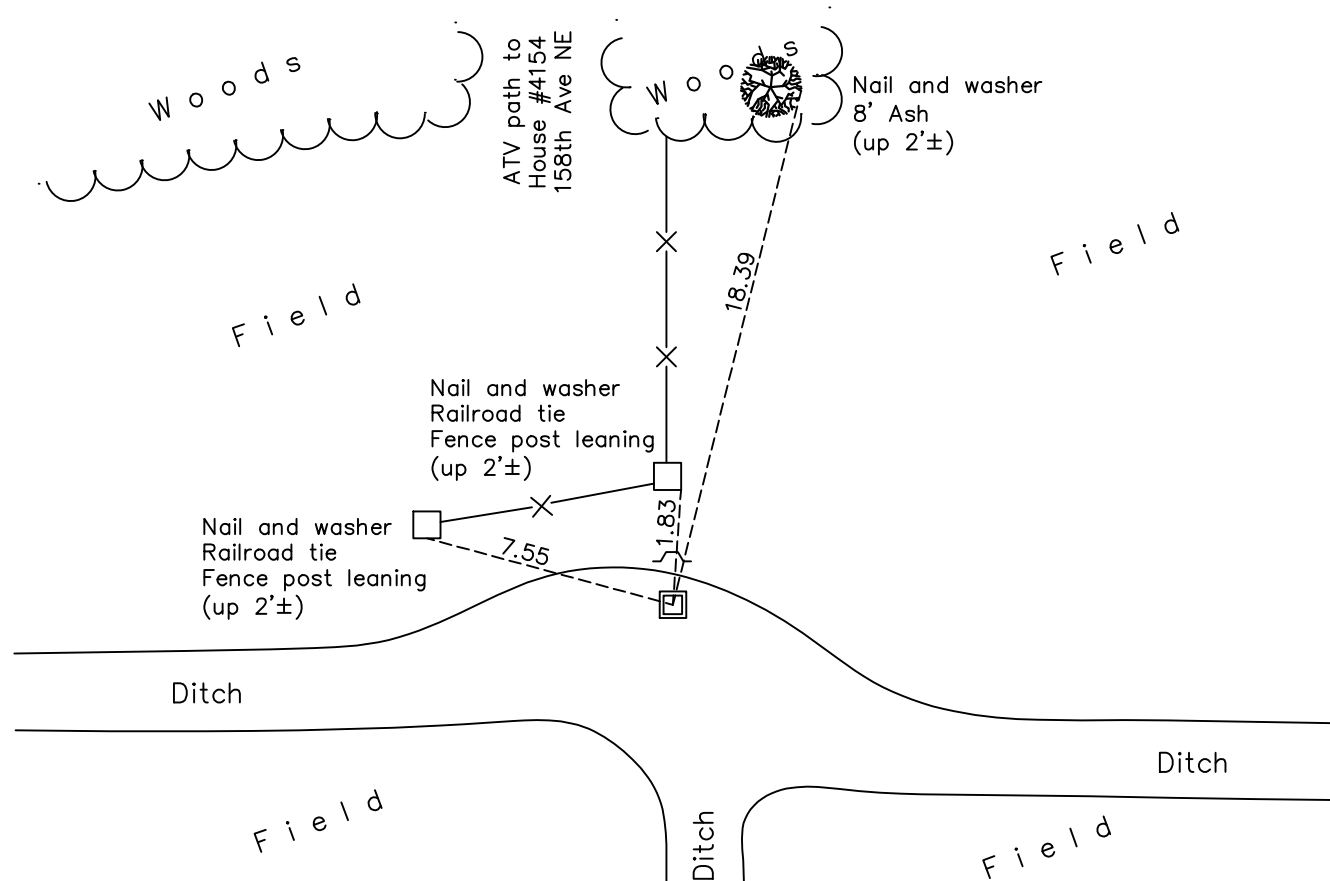
Southwest Corner of Sec. 13 Township 32 Range 23

On the 3rd day of August, 1966, the described corner was evidenced by area resurvey

and to perpetuate the location of said corner, at the exact location thereof, a permanent marker was placed consisting of 2" square steel Telspar monument w/ 'County Surveyor' cap with sign and post to the north

AND on the 13th day of April, 2021, said permanent marker was found and the ties were updated

Updated reference ties are as shown below.



Revision Date
7/21/2021

N.A.D. 1983 Coordinates
 (1996 Adjustment)

County Project Coordinates	
Northing	<u>180005.8596</u>
Easting	<u>526755.9055</u>
Date	<u>2/12/02</u>

I hereby certify that this United States public land survey monument record is correct and complete to the best of my knowledge and belief.
David Zieglmeier Date 7/14/22
 David Zieglmeier Anoka County Surveyor
 Minnesota License Number 46179

HISTORY OF GOVERNMENT CORNER

Page No. 67

County of Anoka

State of Minnesota

Southwest Corner of Sec. 13 Township 32 Range 23

CORNER HISTORY:

February 1855 - This corner was established by Hiram Taylor, Deputy Surveyor. Taylor marked the position by "Set post corner to sections 13, 14, 23 & 24" with two bearing trees marked as accessories.

December 1, 1965 - Set 1-1/4" red and white iron pipe up 3.5'± using area resurvey. Corner ties not available.

August 3, 1966 - Found 1-1/4" red and white iron pipe. Corner ties not available.

June 17, 1971 - Found 1-1/4" red and white iron pipe. Corner ties not available.

August 19, 1975 - Found 1-1/4" red and white iron pipe. Corner ties not available.

July 12, 1984 - Found 1-1/4" red and white iron pipe. Corner ties not available.

March 3, 1987 - Found 1-1/4" red and white iron pipe and replaced with a cast iron monument. Established ties to monument. Set sign and post on the north side.

September 5, 1996 - Found cast iron monument and updated ties.

February 12, 2002 - Found cast iron monument and updated ties. Established NAD 1983 (1996 adj.) Anoka County project coordinates by static GPS methods.

March 31, 2011 - Found cast iron monument broken and laying in ditch due to erosion of ditch.

April 25, 2011 - Set temporary 1/2" iron pipe using corner ties. Checked position by static GPS methods.

May 17, 2011 - Set 2" square steel Telspar monument with punch marked 'County Surveyor' cap using static GPS methods. Verified position by VRS GPS methods. Updated ties.

February 2017 - Found 2" square steel Telspar monument with punch marked 'County Surveyor' cap. Updated ties.

April 13, 2021 - Found 2" square steel Telspar monument with punch marked 'County Surveyor' cap. Updated ties. Verified position of corner by VRS GPS method.