

CERTIFICATE OF LOCATION OF GOVERNMENT CORNER

County of Anoka

State of Minnesota

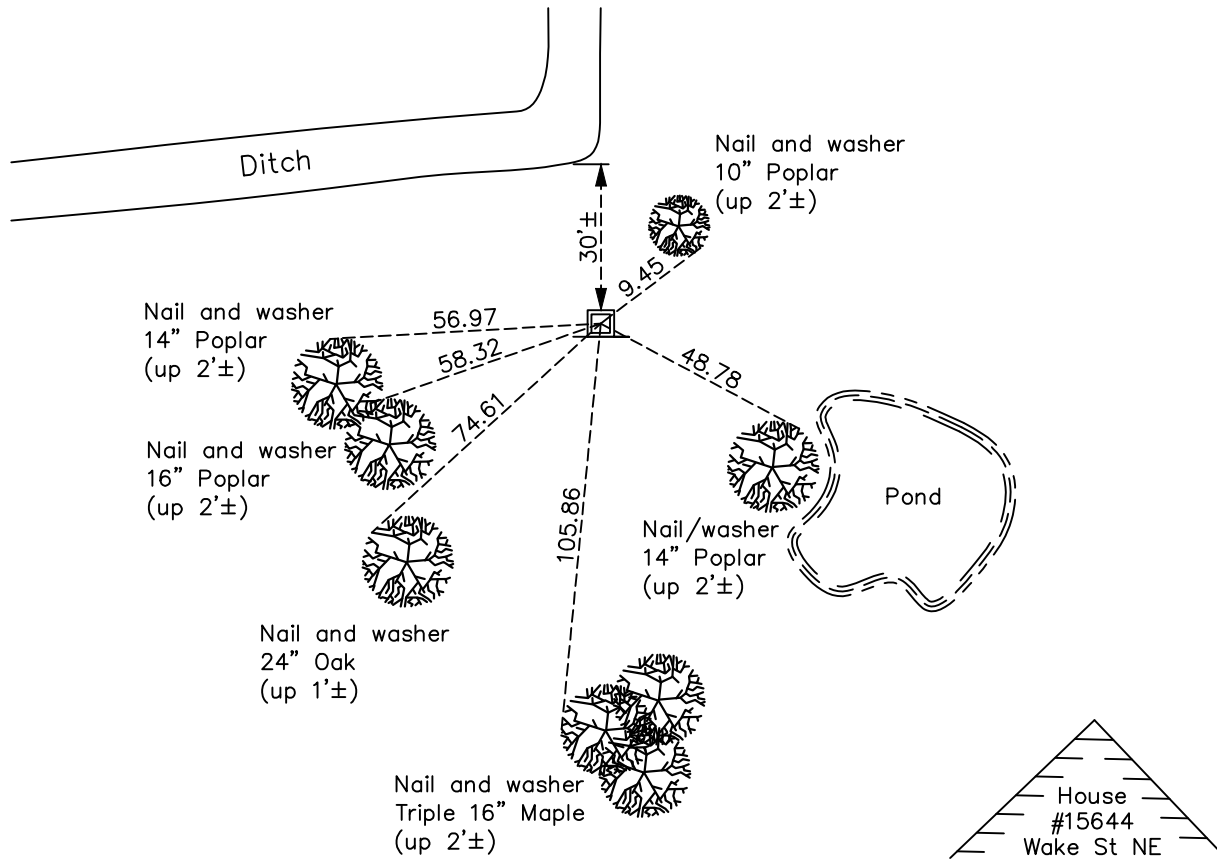
South 1/4 Corner of Sec. 14 Township 32 Range 23

On the 3rd day of November, 1966, the described corner was evidenced by area resurvey

and to perpetuate the location of said corner, at the exact location thereof, a permanent marker was placed consisting of a red and white 2" square steel Telspar monument up 6'± with a sign attached on the south side

AND on the 13th day of April, 2021, said permanent marker was found and the ties were updated

Updated reference ties are as shown below.



Revision Date
7/21/2021

N.A.D. 1983 Coordinates
(1996 Adjustment)

County Project Coordinates	
Northing	<u>180015.0855</u>
Easting	<u>524123.8270</u>
Date	<u>9/10/01</u>

I hereby certify that this United States public land survey monument record is correct and complete to the best of my knowledge and belief.

David Zieglmeier Date 7/14/22

David Zieglmeier Anoka County Surveyor
Minnesota License Number 46179

HISTORY OF GOVERNMENT CORNER

Page No. 68

County of Anoka

State of Minnesota

South 1/4 Corner of Sec. 14 Township 32 Range 23

CORNER HISTORY:

February 1855 - This corner was established by Hiram Taylor, Deputy Surveyor. Taylor marked the position by "Set quarter section post" with one bearing tree marked as an accessory.

November 3, 1966 - Set 1" red and white iron pipe up 3.5'± using area resurvey. Established ties to iron pipe.

June 22, 1971 - Found 1" red and white iron pipe and updated ties.

August 19, 1975 - Found 1" red and white iron pipe and updated ties.

June 22, 1978 - Found 1" red and white iron pipe and updated ties.

July 17, 1984 - Found 1" red and white iron pipe and updated ties.

March 3, 1987 - Replaced old 1" red and white iron pipe with a new red and white iron pipe with sign attached. Updated ties.

September 10, 2001 - Established NAD 1983 (1996 adj.) Anoka County project coordinates by static GPS methods.

March 29, 2011 - Found red and white 2" square steel Telspar monument up 5'± w/sign attached. Updated ties.

March 20, 2017 - Found red and white 2" square steel Telspar monument up 5'± w/sign attached. Updated ties.

April 13, 2021 - Found red and white 2" square steel Telspar monument up 6'± w/sign attached. Updated ties.