

CERTIFICATE OF LOCATION OF GOVERNMENT CORNER

County of Anoka

State of Minnesota

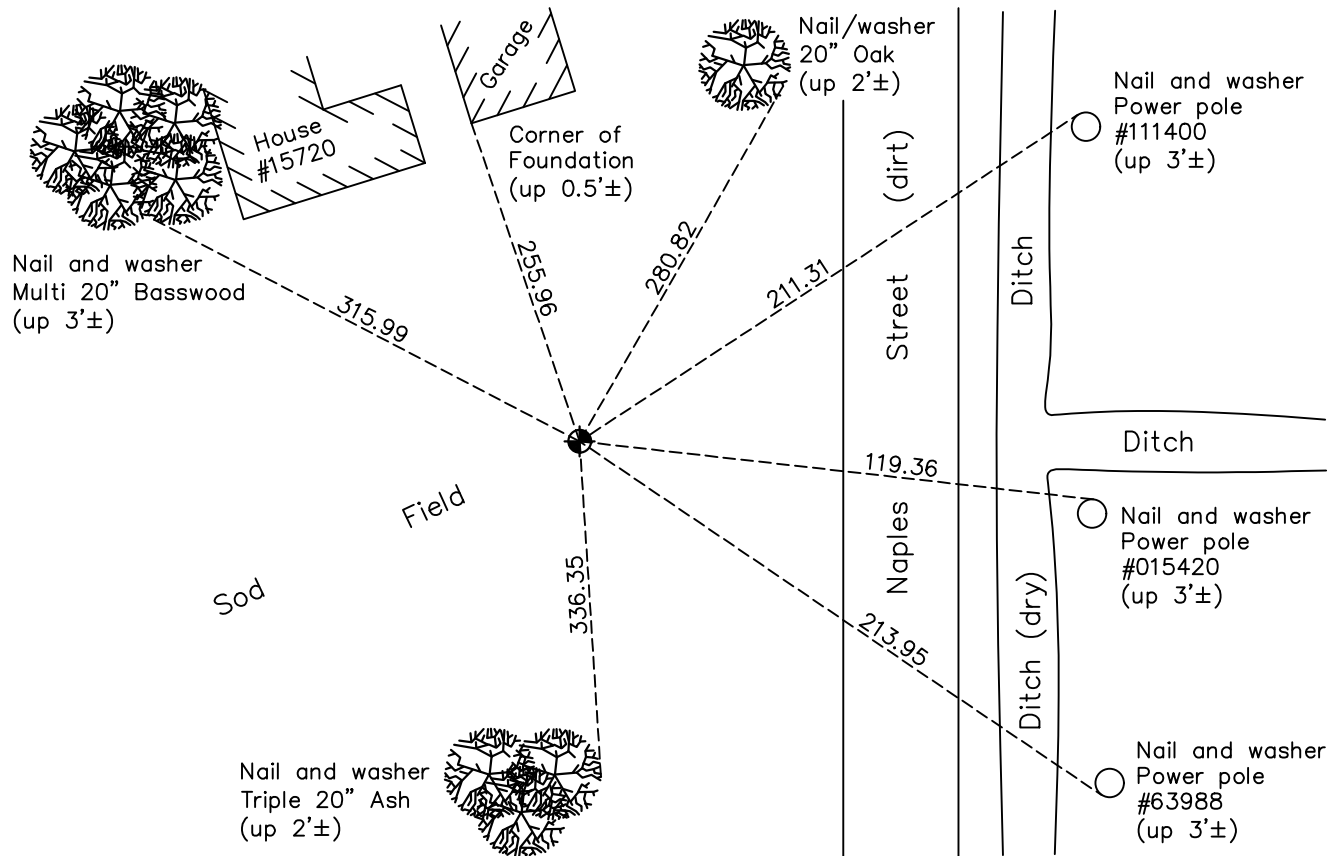
Southwest Corner of Sec. 14 Township 32 Range 23

On the 6th day of September, 1966, the described corner was evidenced by area resurvey

and to perpetuate the location of said corner, at the exact location thereof, a permanent marker was placed consisting of a cast iron monument (down 2'±)

AND on the 13th day of April, 2021, said permanent marker was found down 2' ± and the ties were updated

Updated reference ties are as shown below.



Revision Date
 7/21/2021

N.A.D. 1983 Coordinates
 (1996 Adjustment)

County Project Coordinates	
Northing	180024.7351
Easting	521422.6599
Date	8/31/01

I hereby certify that this United States public land survey monument record is correct and complete to the best of my knowledge and belief.

David Zieglmeier Date 7/14/22

David Zieglmeier Anoka County Surveyor
 Minnesota License Number 46179

HISTORY OF GOVERNMENT CORNER

Page No. 69

County of Anoka

State of Minnesota

Southwest Corner of Sec. 14 Township 32 Range 23

CORNER HISTORY:

February 1855 - This corner was established by Hiram Taylor, Deputy Surveyor. Taylor marked the position by "Set post corner to sections 14, 15, 22 & 23" with two bearing trees marked as accessories.

September 6, 1966 - Set cast iron monument flush using area resurvey. Established ties to monument.

July 16, 1971 - Found cast iron monument down 1.2'± in sod field. Updated ties.

May 17, 1974 - Found cast iron monument and updated ties.

July 24, 1975 - Reset cast iron monument down 1'± according to survey from the south. Updated ties.

June 29, 1984 - Found cast iron monument and updated ties.

November 21, 1991 - Found cast iron monument and updated ties.

August 30, 1996 - Found cast iron monument and updated ties.

April 10, 1997 - Reset cast iron monument down 2'± and updated ties.

August 31, 2001 - Found cast iron monument and updated ties. Established NAD 1983 (1996 adj.) Anoka County project coordinates by static GPS methods.

April 15, 2011 - Found cast iron monument down 2'± and updated ties.

March 23, 2017 - Found cast iron monument down 2'±. Verified position by VRS GPS methods. Updated ties.

April 13, 2021 - Found cast iron monument down 2'±. Verified position by VRS GPS methods. Updated ties.