

CERTIFICATE OF LOCATION OF GOVERNMENT CORNER

County of Anoka

State of Minnesota

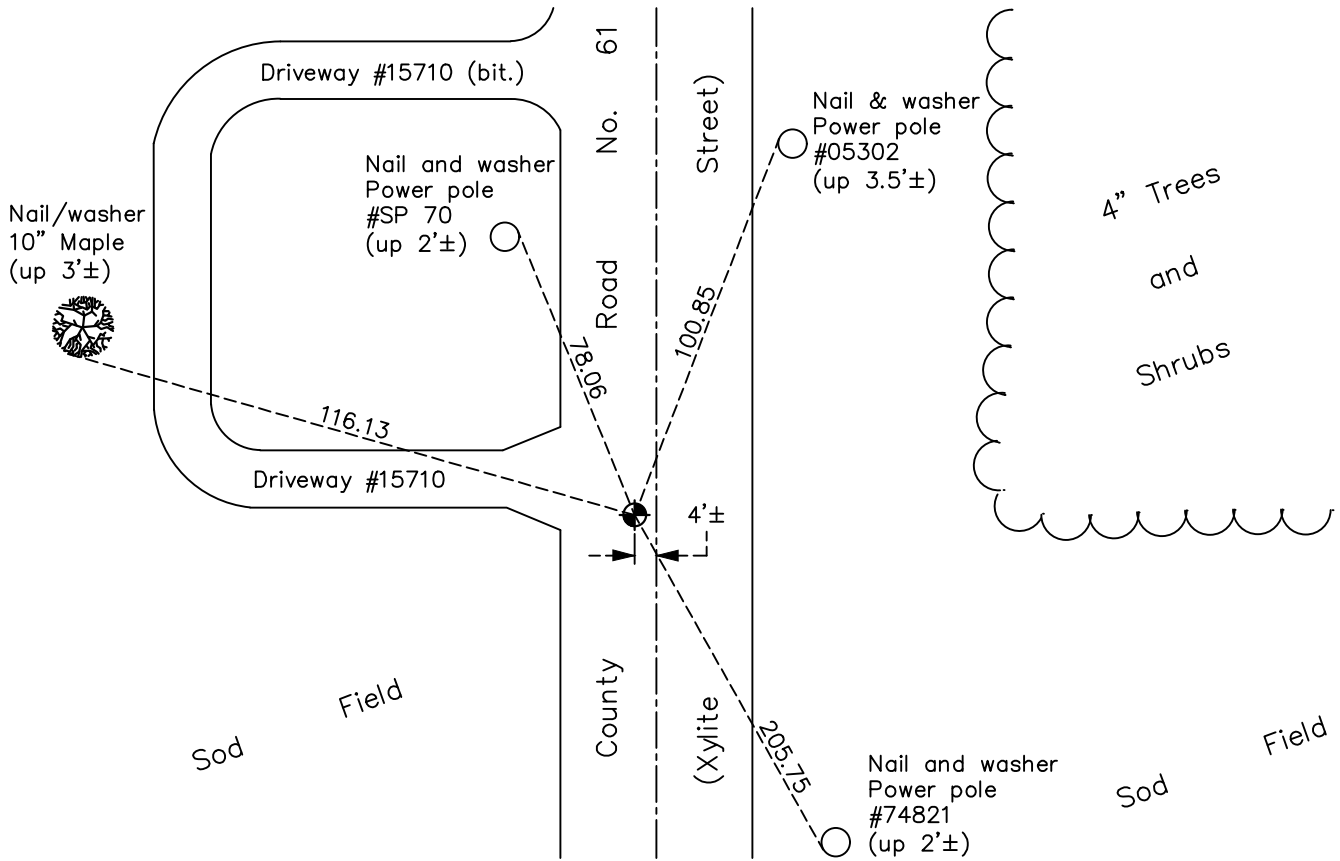
Southeast Corner of Sec. 16 Township 32 Range 23

On the 9th day of June, 1960, the described corner was evidenced by a concrete monument

and to perpetuate the location of said corner, at the exact location thereof, a permanent marker was placed consisting of a cast iron monument

AND on the 5th day of February, 2021, said permanent marker was Found Cast Iron Monument flush with surface and the ties were updated.

Updated reference ties are as shown below.



Revision Date
7/22/2021

N.A.D. 1983 Coordinates
 (1996 Adjustment)

County Project Coordinates	
Northing	<u>180131.9744</u>
Easting	<u>516111.4304</u>
Date	<u>9/18/01</u>

I hereby certify that this United States public land survey monument record is correct and complete to the best of my knowledge and belief.
David Zieglmeier Date 7/14/22
 David Zieglmeier Anoka County Surveyor
 Minnesota License Number 46179

HISTORY OF GOVERNMENT CORNER

Page No. 71

County of Anoka

State of Minnesota

Southeast Corner of Sec. 16 Township 32 Range 23

CORNER HISTORY:

February 1855 - This corner was established by Hiram Taylor, Deputy Surveyor. Taylor marked the position by "Set post corner to sections 15, 16, 21 & 22" with three bearing trees marked as accessories.

December 1, 1948 - Found concrete monument and updated ties.

June 9, 1960 - Found concrete monument down 4'± with an iron pipe on the south side. Set cast iron monument down 0.5'± on top of concrete monument. Updated ties.

July 15, 1964 - Found cast iron monument and updated ties.

August 2, 1966 - Found cast iron monument and updated ties.

June 12, 1975 - Raised cast iron monument flush and updated ties.

June 14, 1978 - Found cast iron monument and updated ties.

June 28, 1984 - Replaced cast iron monument with a cast iron monument. Updated ties.

November 25, 1991 - Found cast iron monument and updated ties.

July 31, 1996 - Found cast iron monument and updated ties.

September 30, 1997 - Found cast iron monument and updated ties prior to road construction.

September 18, 2001 - Established NAD 1983 (1996 adj.) Anoka County project coordinates by static GPS methods.

March 2011 - Found cast iron monument and updated ties.

March 14, 2017 - Found cast iron monument. Verified position by VRS GPS methods. Updated ties.

June 13, 2018 - Found cast iron monument. Verified position by VRS GPS methods and updated ties prior to road construction. Removed monument.

September 17, 2018 - Set cast iron monument after construction using static GPS methods. Verified position by VRS GPS methods. Updated ties.

February 5, 2021 - Found cast iron monument. Verified position by VRS GPS method. Updated ties.