

CERTIFICATE OF LOCATION OF GOVERNMENT CORNER

County of Anoka

State of Minnesota

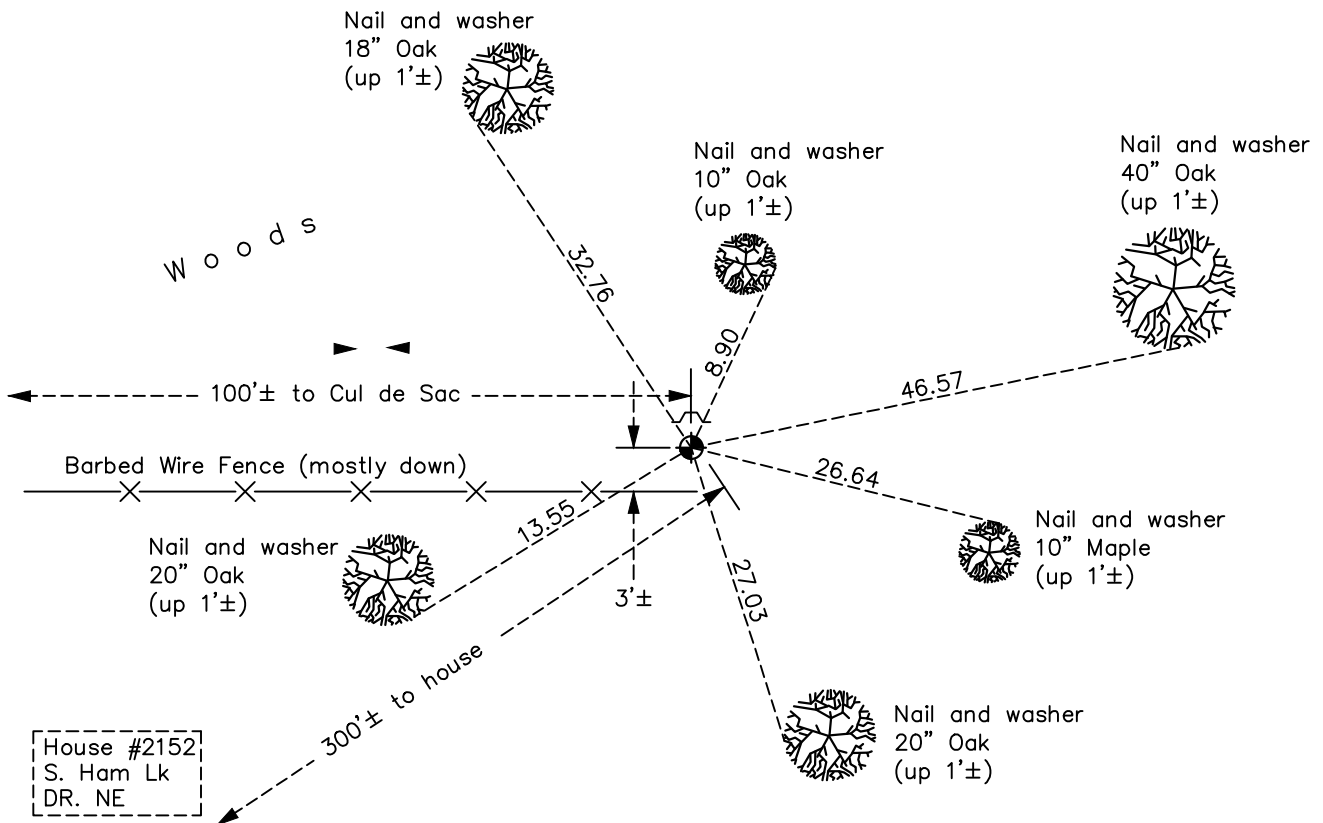
South 1/4 Corner of Sec. 16 Township 32 Range 23

On the 10th day of June, 1960, the described corner was evidenced by a concrete monument

and to perpetuate the location of said corner, at the exact location thereof, a permanent marker was placed consisting of a cast iron monument with a sign and post on the north side

AND on the 22nd day of February, 2021, said permanent marker was found down 0.1'± and the ties were updated

Updated reference ties are as shown below.



Revision Date
7/22/2021

N.A.D. 1983 Coordinates
(1996 Adjustment)

County Project Coordinates	
Northing	<u>180240.8375</u>
Easting	<u>513575.7130</u>
Date	<u>2/05/02</u>

I hereby certify that this United States public land survey monument record is correct and complete to the best of my knowledge and belief.

David Zieglmeier Date 7/14/22

David Zieglmeier Anoka County Surveyor
Minnesota License Number 46179

HISTORY OF GOVERNMENT CORNER

Page No. 72

County of Anoka

State of Minnesota

South 1/4 Corner of Sec. 16 Township 32 Range 23

CORNER HISTORY:

February 1855 - This corner was established by Hiram Taylor, Deputy Surveyor. Taylor marked the position by "Set quarter section post" with one bearing tree marked as an accessory.

Unknown date - Found concrete monument up 0.3'± and updated ties.

June 10, 1960 - Found concrete monument up 0.3'± and updated ties.

July 15, 1964 - Found concrete monument up 0.3'± and updated ties.

June 7, 1971 - Found concrete monument up 0.3'± and updated ties.

June 19, 1975 - Found concrete monument and replaced with a cast iron monument flush. Updated ties. Set sign and post 1'± north of monument.

June 14, 1978 - Found cast iron monument and updated ties.

May 28, 1993 - Found cast iron monument and updated ties.

September 5, 1996 - Found cast iron monument and updated ties.

February 5, 2002 - Found cast iron monument and updated ties. Established NAD 1983 (1996 adj.) Anoka County project coordinates by static GPS methods.

March 1, 2011 - Found cast iron monument and updated ties.

March 14, 2017 - Found cast iron monument down 0.1'± and updated ties.

February 22, 2021 - Found cast iron monument down 0.1'± and updated ties.