

CERTIFICATE OF LOCATION OF GOVERNMENT CORNER

County of Anoka

State of Minnesota

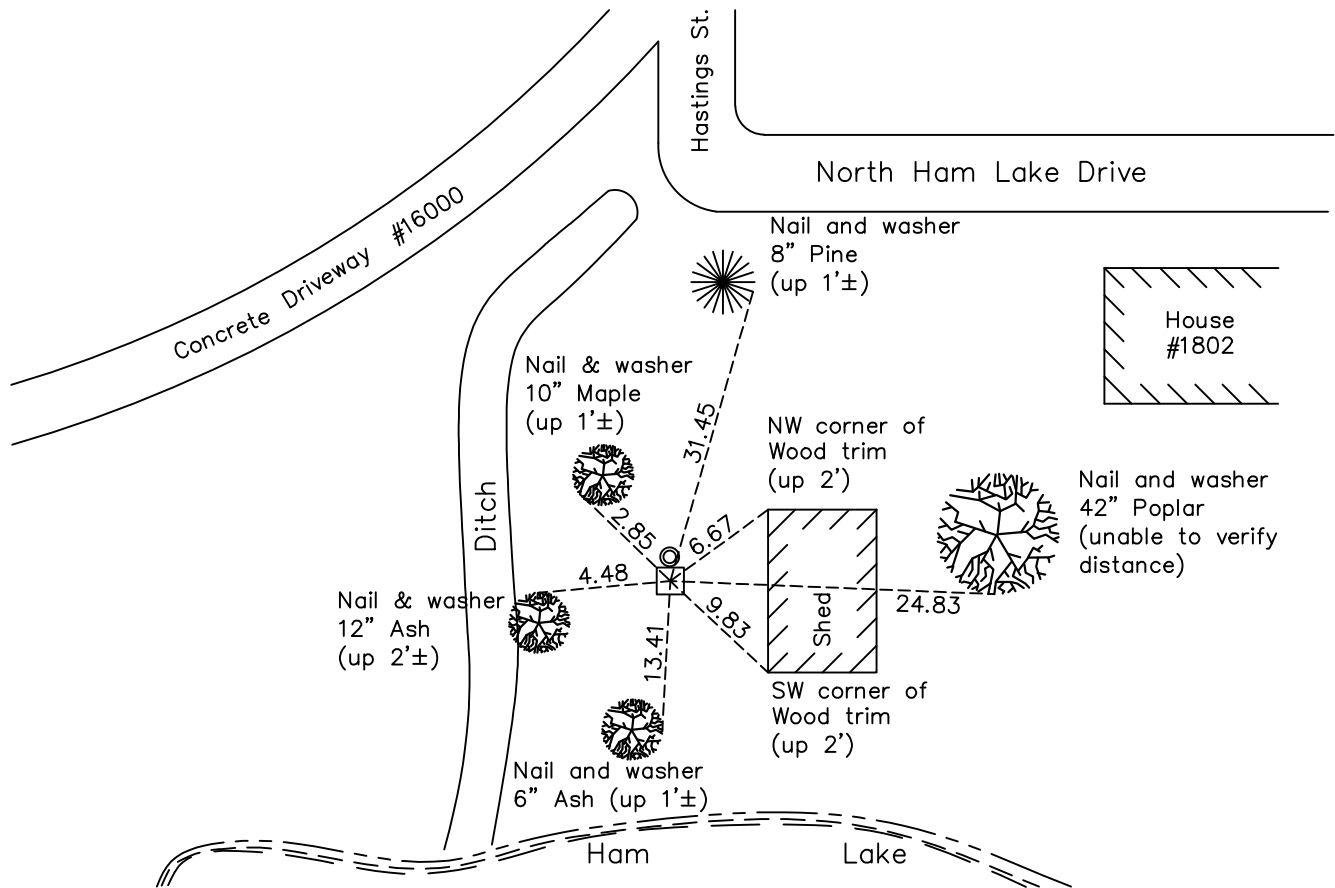
Meander Corner of Sec. 16 Township 32 Range 23

On the 7th day of June, 1960, the described corner was evidenced by a concrete monument

and to perpetuate the location of said corner, at the exact location thereof, a permanent marker was placed consisting of the same concrete monument with a 1/2" iron pipe on the north side

AND on the 12th day of April, 2021, said permanent marker was found down 0.3'± and the ties were updated

Updated reference ties are as shown below.



Revision Date
7/22/2021

N.A.D. 1983 Coordinates
(1996 Adjustment)

County Project Coordinates	
Northing	<u>182157.1113</u>
Easting	<u>510842.2643</u>
Date	<u>2/05/02</u>

I hereby certify that this United States public land survey monument record is correct and complete to the best of my knowledge and belief.

David Zieglmeier Date 7/14/22

David Zieglmeier Anoka County Surveyor
Minnesota License Number 46179

HISTORY OF GOVERNMENT CORNER

Page No. 73

County of Anoka

State of Minnesota

Meander Corner of Sec. 16 Township 32 Range 23

CORNER HISTORY:

February 1855 - This corner was established by Hiram Taylor, Deputy Surveyor. Taylor marked the position by "Over lake, set meander post" with one bearing tree marked as an accessory.

Unknown date - Found concrete monument up 0.3'± and updated ties.

June 7, 1960 - Found concrete monument up 0.5'± and updated ties.

July 13, 1964 - Found concrete monument and updated ties.

August 10, 1966 - Found concrete monument and updated ties.

June 7, 1971 - Found concrete monument and updated ties.

June 15, 1978 - Found concrete monument and updated ties.

July 18, 1984 - Found concrete monument and updated ties.

January 31, 1991 - Found concrete monument and updated ties.

June 16, 1992 - Found concrete monument and updated ties.

August 16, 1996 - Found concrete monument and updated ties.

February 5, 2002 - Found concrete monument with a 1/2" iron pipe on the north side. Updated ties. Established NAD 1983 (1996 adj.) Anoka County project coordinates by static GPS methods.

March 1, 2011 - Found concrete monument with a 1/2" iron pipe on the north side. Updated ties.

March 23, 2017 - Found concrete monument down 0.5'± with a 1/2" iron pipe on the north side. Updated ties.

April 12, 2021 - Found concrete monument down 0.3'± with a 1/2" iron pipe on the north side. Updated ties.