

CERTIFICATE OF LOCATION OF GOVERNMENT CORNER

County of Anoka

State of Minnesota

Meander Corner of Sec. 20 Township 32 Range 23

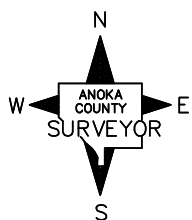
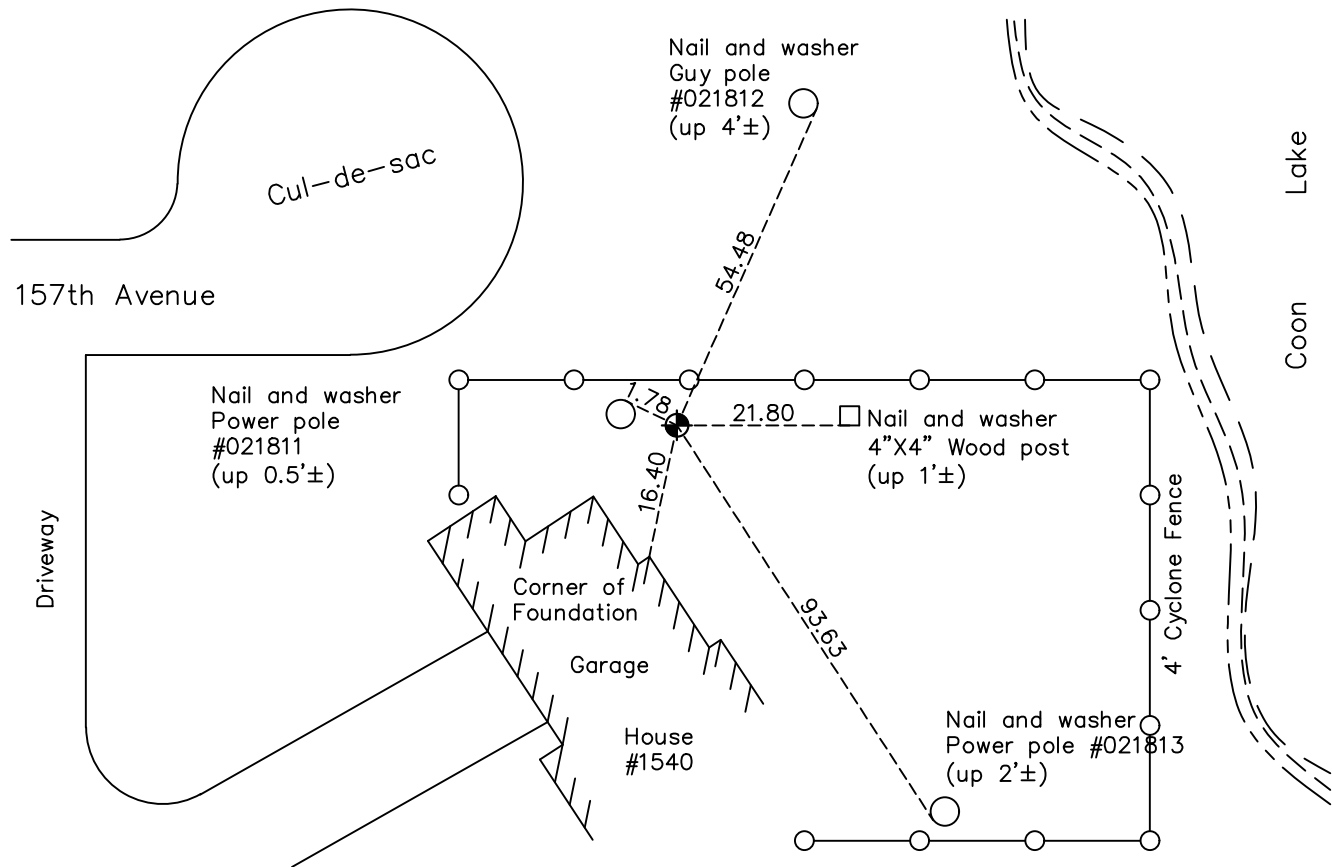
(on north line of section and west side of Ham Lake)

On the 27th day of September, 1972, the described corner was evidenced by a sandstone monument

and to perpetuate the location of said corner, at the exact location thereof, a permanent marker was placed consisting of a cast iron monument

AND on the 15th day of April, 2021, said permanent marker was found down 0.2'± and the ties were updated

Updated reference ties are as shown below.



N.A.D. 1983 Coordinates
(1996 Adjustment)

County Project Coordinates

Northing 180253.3809

Easting 509419.0039

Date 2/07/02

I hereby certify that this United States public land survey monument record is correct and complete to the best of my knowledge and belief.

David Zieglmeier Date 7/21/22

David Zieglmeier Anoka County Surveyor

Minnesota License Number 46179

Revision Date

7/22/2021

HISTORY OF GOVERNMENT CORNER

Page No. 78

County of Anoka

State of Minnesota

Meander Corner of Sec. 20 Township 32 Range 23 (on north line of section and west side of Ham Lake)

CORNER HISTORY:

February 1855 - This corner was established by Hiram Taylor, Deputy Surveyor. Taylor marked the position by "Leave lake, set meander post" with two bearing trees marked as accessories.

July 2, 1959 - Found 3" x 6" sandstone monument up 3" and updated ties.

September 25, 1961 - Found sandstone monument and updated ties.

August 10, 1962 - Set cast iron monument.

July 13, 1964 - Found cast iron monument and updated ties.

August 8, 1966 - Found cast iron monument and updated ties.

June 7, 1971 - Found cast iron monument and updated ties.

September 27, 1972 - Found cast iron monument and updated ties.

June 16, 1975 - Found cast iron monument and updated ties.

June 15, 1978 - Found cast iron monument and updated ties.

July 12, 1984 - Found cast iron monument and updated ties.

January 3, 1991 - Found cast iron monument and updated ties.

June 17, 1992 - Found cast iron monument and updated ties.

August 5, 1996 - Found cast iron monument and updated ties.

February 7, 2002 - Established NAD 1983 (1996 adj.) Anoka County project coordinates by static GPS methods.

March 30, 2011 - Found cast iron monument down 0.2'± and updated ties.

February 16, 2017 - Found cast iron monument down 0.2'± and updated ties.

April 15, 2021 - Found cast iron monument down 0.2'± and updated ties.