

CERTIFICATE OF LOCATION OF GOVERNMENT CORNER

County of Anoka

State of Minnesota

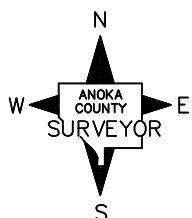
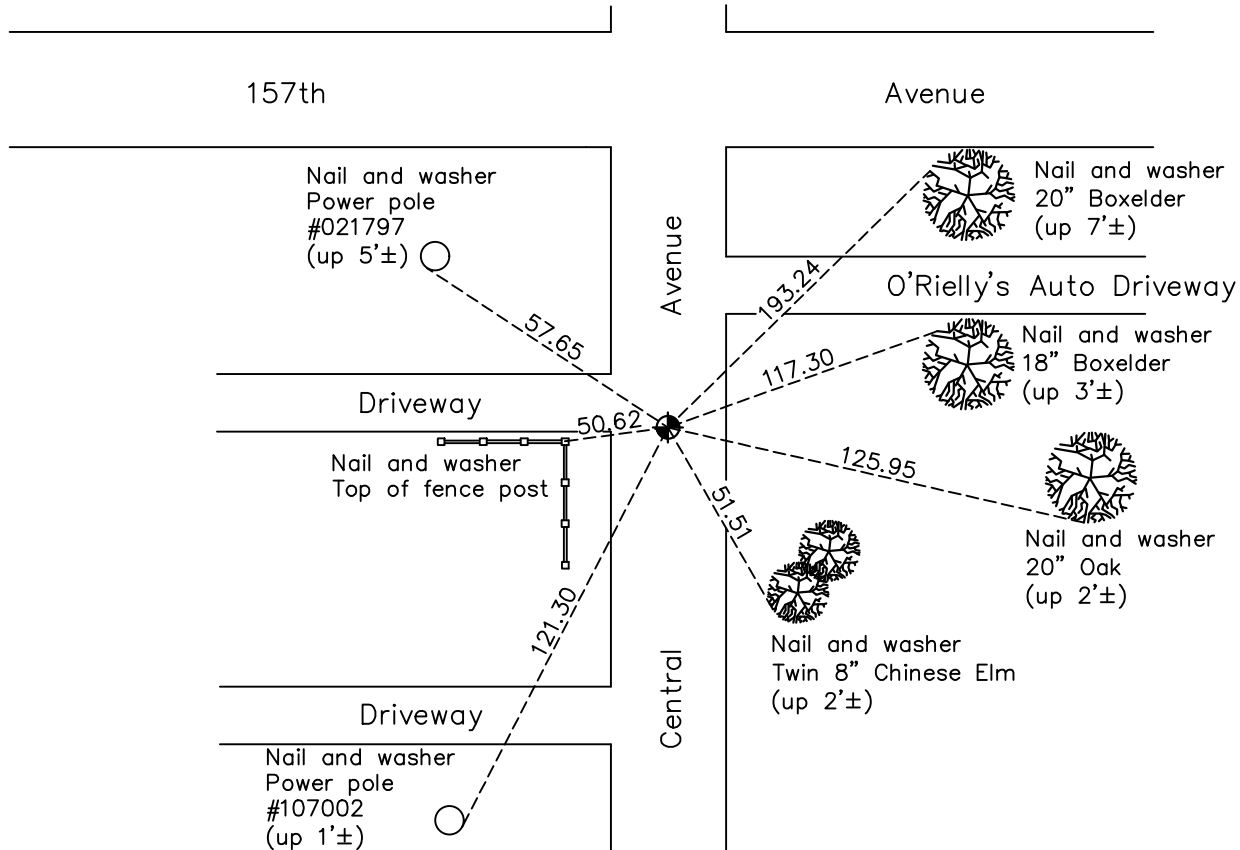
North 1/4 Corner of Sec. 20 Township 32 Range 23

On the 20th day of November, 1970, the described corner was evidenced by a railroad spike

and to perpetuate the location of said corner, at the exact location thereof, a permanent marker was placed consisting of a cast iron monument

AND on the 18th day of February, 2021, said permanent marker was found flush and the ties were updated

Updated reference ties are as shown below.



Revision Date
7/22/2021

N.A.D. 1983 Coordinates
(1996 Adjustment)

County Project Coordinates	
Northing	180235.3813
Easting	508191.6265
Date	12/13/01

I hereby certify that this United States public land survey monument record is correct and complete to the best of my knowledge and belief.
David Zieglmeier Date 7/21/22
 David Zieglmeier Anoka County Surveyor
 Minnesota License Number 46179

HISTORY OF GOVERNMENT CORNER

Page No. 79

County of Anoka

State of Minnesota

North 1/4 Corner of Sec. 20 Township 32 Range 23

CORNER HISTORY:

February 1855 - This corner was established by Hiram Taylor, Deputy Surveyor. Taylor marked the position by "Set quarter section post" with one bearing tree marked as an accessory.

July 2, 1959 - Found railroad spike down 0.05' in center of road. Updated ties.

July 13, 1964 - Found railroad spike and updated ties.

August 8, 1966 - Found railroad spike and updated ties.

November 20, 1970 - Found railroad spike and updated ties.

June 2, 1971 - Set cast iron monument flush using corner ties. Updated ties.

June 10, 1975 - Found cast iron monument and updated ties.

June 13, 1978 - Found cast iron monument and updated ties.

July 2, 1984 - Found cast iron monument and updated ties.

January 3, 1991 - Found cast iron monument and updated ties.

November 25, 1991 - Found cast iron monument and updated ties.

August 1, 1996 - Found cast iron monument and updated ties.

December 13, 2001 - Found cast iron monument and updated ties. Established NAD 1983 (1996 adj.) Anoka County project coordinates by static GPS methods.

May 4, 2011 - Found cast iron monument broken and down 2'±. Checked ties to center fin.

May 25, 2011 - Found broken cast iron monument and replaced with a new cast iron monument flush using static GPS methods. Verified position by VRS GPS methods. Updated ties.

February 16, 2017 - Found cast iron monument. Verified position by VRS GPS methods. Updated ties.

February 18, 2021 - Found cast iron monument. Verified position by VRS GPS methods. Updated ties.