

# CERTIFICATE OF LOCATION OF GOVERNMENT CORNER

County of Anoka

State of Minnesota

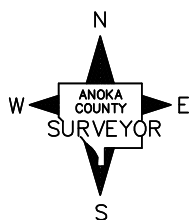
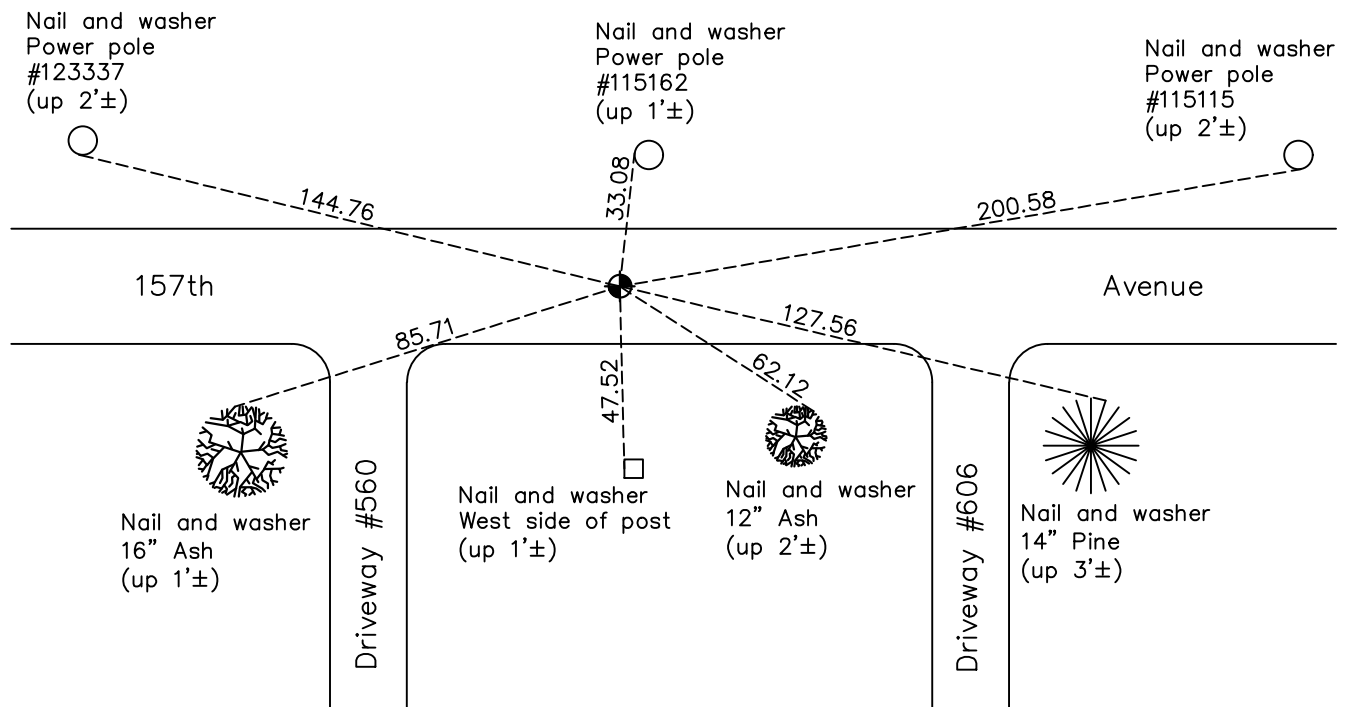
## North $\frac{1}{4}$ Corner of Sec. 19 Township 32 Range 23

On the 21st day of December, 1962, the described corner was evidenced by area resurvey

and to perpetuate the location of said corner, at the exact location thereof, a permanent marker was placed consisting of a cast iron monument

AND on the 19th day of February, 2021, said permanent marker was found and the ties  
were updated

Updated reference ties are as shown below.



Revision Date  
7/22/2021

N.A.D. 1983 Coordinates  
(1996 Adjustment)

County Project Coordinates	
Northing	<u>180125.3898</u>
Easting	<u>502849.3509</u>
Date	<u>1/02/02</u>

I hereby certify that this United States public land survey monument record is correct and complete to the best of my knowledge and belief.

*David Zieglmeier* Date 7/21/22

David Zieglmeier Anoka County Surveyor  
Minnesota License Number 46179

# HISTORY OF GOVERNMENT CORNER

Page No. 81

County of Anoka

State of Minnesota

## North 1/4 Corner of Sec. 19 Township 32 Range 23

### **CORNER HISTORY:**

February 1855 - This corner was established by Hiram Taylor, Deputy Surveyor. Taylor marked the position by "Set quarter section post" with two bearing trees marked as accessories.

December 21, 1962 - Set 3/4" iron pipe using area resurvey. Established ties to iron pipe.

April 18, 1963 - Found 3/4" iron pipe and replaced with a cast iron monument down 0.2'±. Updated ties.

September 17, 1964 - Found cast iron monument and updated ties.

August 8, 1966 - Found cast iron monument broken and replaced with a new cast iron monument. Updated ties.

September 1, 1966 - Found cast iron monument and updated ties.

November 3, 1966 - Reset cast iron monument. Updated ties.

May 20, 1971 - Found cast iron monument and updated ties.

June 18, 1975 - Found cast iron monument and updated ties.

June 15, 1978 - Found cast iron monument and updated ties.

June 18, 1985 - Found cast iron monument, set construction ties and updated corner ties prior to construction. Removed monument.

October 10, 1985 - Set cast iron monument flush after construction. Updated ties.

January 3, 1991 - Found cast iron monument and updated ties.

November 27, 1991 - Found cast iron monument and updated ties.

August 2, 1996 - Found cast iron monument and updated ties.

January 2, 2002 - Found cast iron monument and updated ties. Established NAD 1983 (1996 adj.) Anoka County project coordinates by static GPS methods.

May 24, 2011 - Reset cast iron monument flush after construction using static GPS methods. Verified position by VRS GPS methods. Updated ties.

February 15, 2017 - Found cast iron monument. Verified position by VRS GPS methods. Updated ties.

February 19, 2021 - Found cast iron monument. Verified position by VRS GPS methods. Updated ties.