

CERTIFICATE OF LOCATION OF GOVERNMENT CORNER

County of Anoka

State of Minnesota

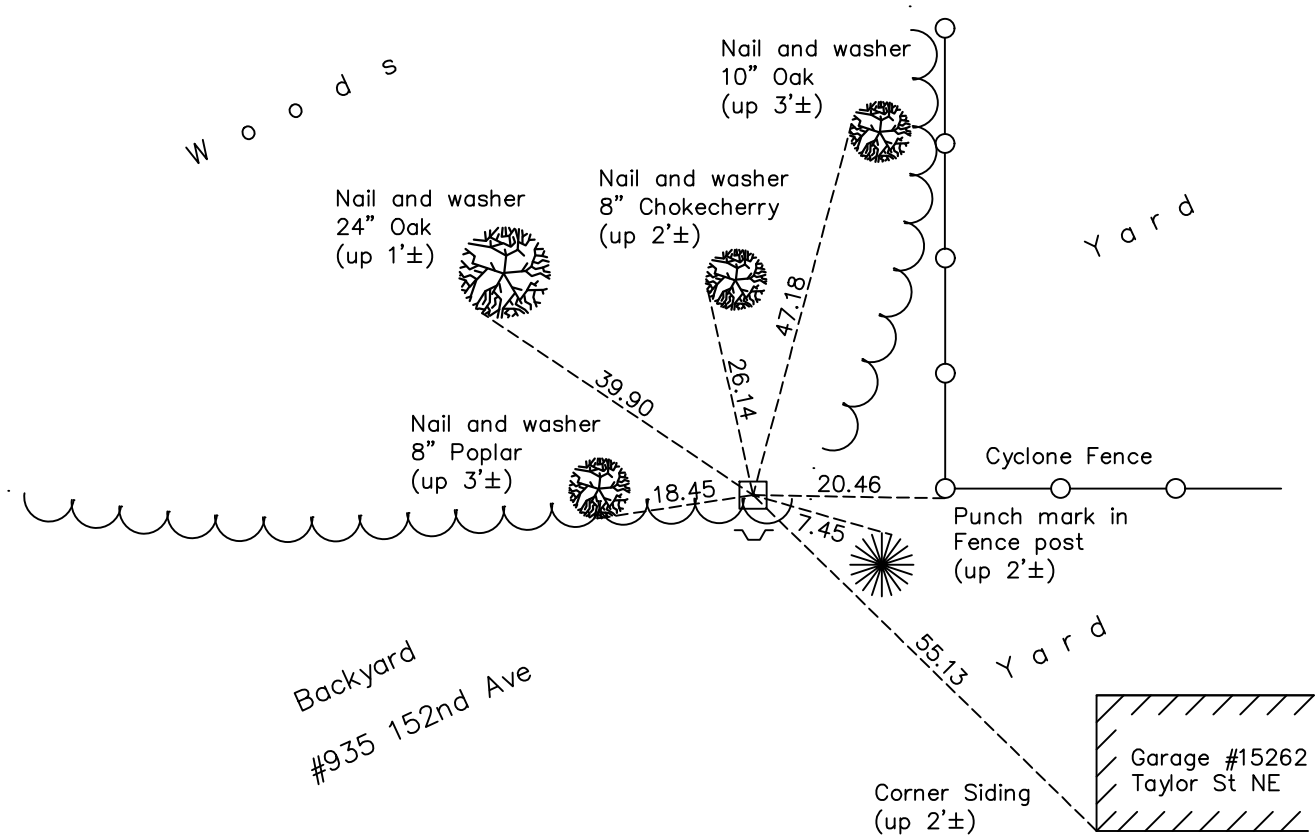
West 1/4 Corner of Sec. 20 Township 32 Range 23

On the 30th day of September, 1960, the described corner was evidenced by a granite monument

and to perpetuate the location of said corner, at the exact location thereof, a permanent marker was placed consisting of the same granite monument with a sign and post on the south side

AND on the 14th day of April, 2021, said permanent marker was found down 0.5'± and the ties were updated

Updated reference ties are as shown below.



N

S

ANOKA COUNTY SURVEYOR

Revision Date

7/22/2021

N.A.D. 1983 Coordinates
(1996 Adjustment)

County Project Coordinates	
Northing	<u>177518.3612</u>
Easting	<u>505489.7535</u>
Date	<u>2/06/02</u>

I hereby certify that this United States public land survey monument record is correct and complete to the best of my knowledge and belief.

David Zieglmeier Date 7/21/22

David Zieglmeier Anoka County Surveyor
Minnesota License Number 46179

HISTORY OF GOVERNMENT CORNER

Page No. 82

County of Anoka

State of Minnesota

West 1/4 Corner of Sec. 20 Township 32 Range 23

CORNER HISTORY:

February 1855 - This corner was established by Hiram Taylor, Deputy Surveyor. Taylor marked the position by "Set quarter section post" with one bearing tree marked as an accessory.

September 30, 1960 - Found granite monument down 0.7'± and updated ties.

July 21, 1964 - Found granite monument and updated ties.

August 11, 1966 - Found granite monument and updated ties.

June 14, 1971 - Found granite monument and updated ties.

June 16, 1975 - Found granite monument and updated ties.

June 15, 1978 - Found granite monument and updated ties.

July 18, 1984 - Found granite monument and updated ties.

January 3, 1991 - Found granite monument and updated ties.

November 22, 1993 - Found granite monument down 1'± with sign and post on the south side. Updated ties.

August 13, 1996 - Found granite monument and updated ties.

February 6, 2002 - Established NAD 1983 (1996 adj.) Anoka County project coordinates by static GPS methods.

March 9, 2011 - Found granite monument down 0.5'± and updated ties.

March 22, 2017 - Found granite monument down 0.5'± and updated ties.

April 14, 2021 - Found granite monument down 0.5'± and updated ties. Verified position by VRS GPS method.