

CERTIFICATE OF LOCATION OF GOVERNMENT CORNER

County of Anoka

State of Minnesota

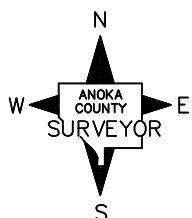
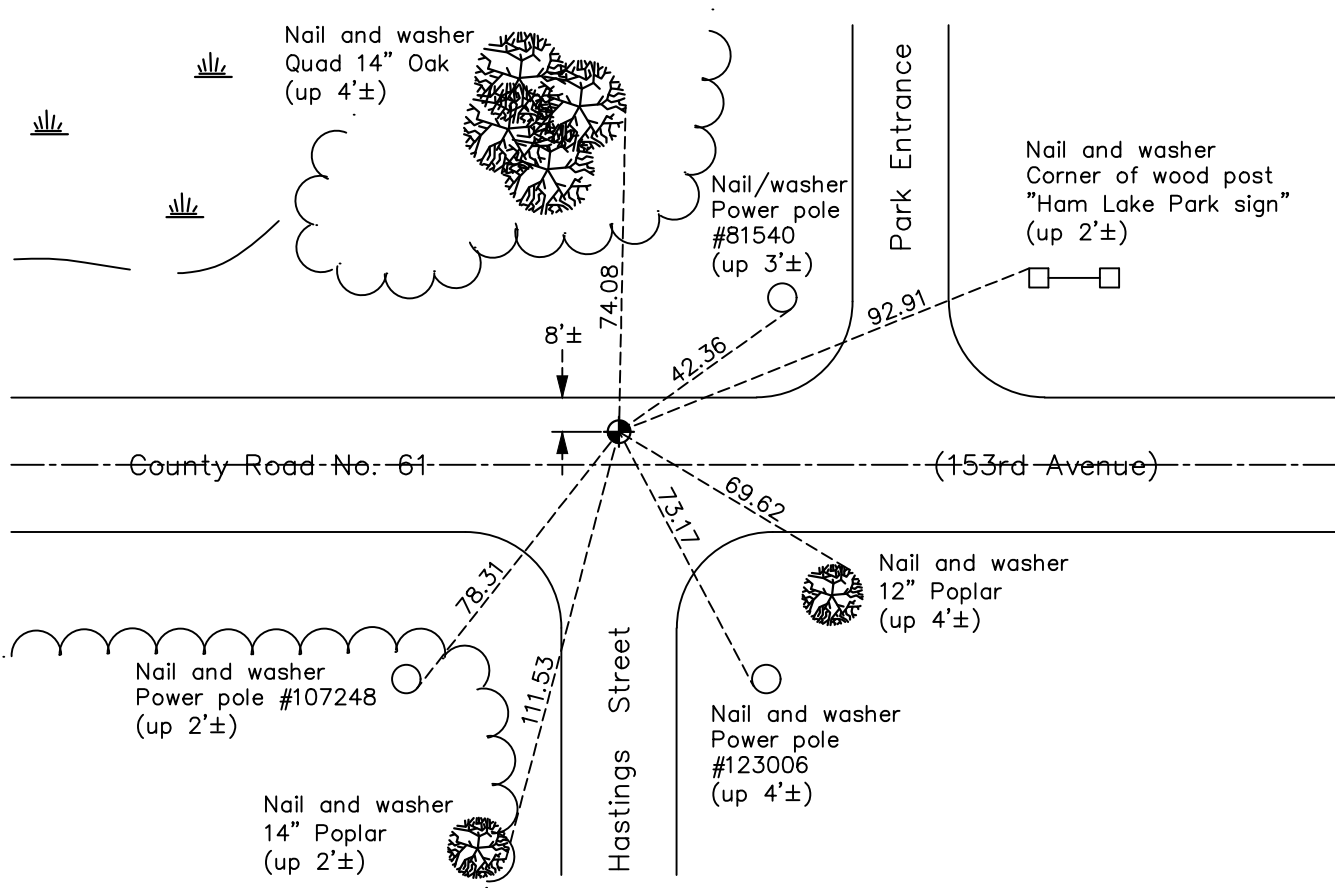
West 1/4 Corner of Sec. 21 Township 32 Range 23

On the 6th day of June, 1960, the described corner was evidenced by a granite monument

and to perpetuate the location of said corner, at the exact location thereof, a permanent marker was placed consisting of a cast iron monument

AND on the 5th day of February, 2021, said permanent marker was found flush and the ties were updated

Updated reference ties are as shown below.



Revision Date
7/22/2021

N.A.D. 1983 Coordinates
 (1996 Adjustment)

County Project Coordinates	
Northing	<u>177590.6896</u>
Easting	<u>510908.8257</u>
Date	<u>12/12/01</u>

I hereby certify that this United States public land survey monument record is correct and complete to the best of my knowledge and belief.

David Zieglmeier Date 7/21/22

David Zieglmeier Anoka County Surveyor
 Minnesota License Number 46179

HISTORY OF GOVERNMENT CORNER

Page No. 83

County of Anoka

State of Minnesota

West 1/4 Corner of Sec. 21 Township 32 Range 23

CORNER HISTORY:

February 1855 - This corner was established by Hiram Taylor, Deputy Surveyor. Taylor marked the position by "Set quarter section post" with one bearing tree marked as an accessory.

June 6, 1960 - Found granite monument down 3.5'±. Set cast iron monument down 0.2'± on top of granite monument. Updated ties.

July 15, 1964 - Found cast iron monument and updated ties.

August 8, 1966 - Found cast iron monument and updated ties.

May 5, 1971 - Found cast iron monument and updated ties.

June 12, 1975 - Found cast iron monument and updated ties.

June 15, 1978 - Found cast iron monument and updated ties.

January 7, 1991 - Found cast iron monument and updated ties.

November 25, 1991 - Found cast iron monument and updated ties.

August 2, 1996 - Found cast iron monument and updated ties.

December 12, 2001 - Established NAD 1983 (1996 adj.) Anoka County project coordinates by static GPS methods.

April 22, 2011 - Found cast iron monument and updated ties.

August 15, 2014 - Reset cast iron monument flush after road construction. Verified position by VRS GPS methods. Updated ties.

March 15, 2017 - Found cast iron monument. Verified position by VRS GPS methods. Updated ties.

February 5, 2021 - Found cast iron monument. Verified position by VRS GPS methods. Updated ties.