

CERTIFICATE OF LOCATION OF GOVERNMENT CORNER

County of Anoka

State of Minnesota

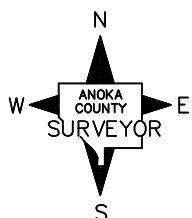
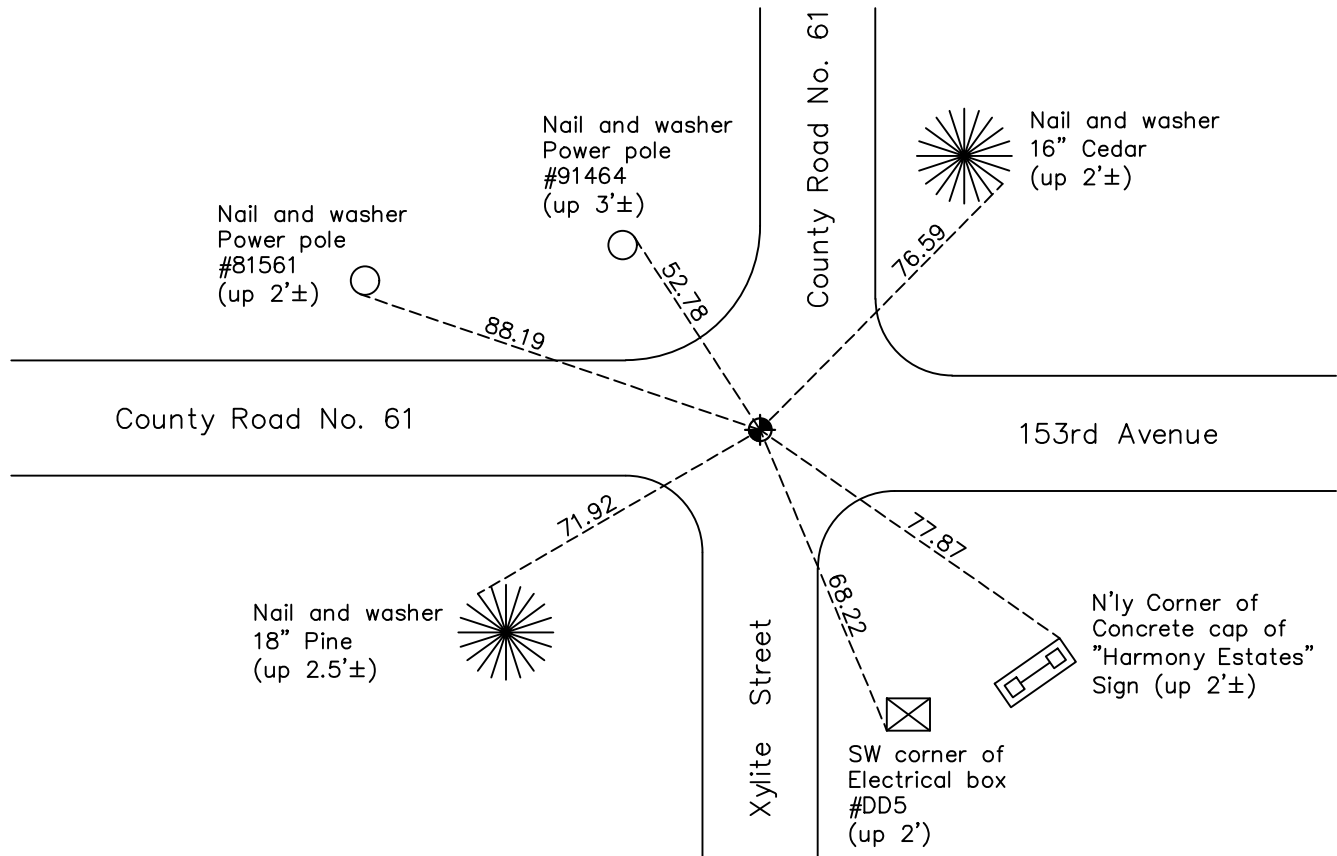
East 1/4 Corner of Sec. 21 Township 32 Range 23

On the 1st day of May, 1962, the described corner was evidenced by area resurvey

and to perpetuate the location of said corner, at the exact location thereof, a permanent marker was placed consisting of a cast iron monument

AND on the 26th day of January, 2021, said permanent marker was Found and the ties were updated.

Updated reference ties are as shown below.



Revision Date

7/22/2021

N.A.D. 1983 Coordinates
(1996 Adjustment)

County Project Coordinates	
Northing	<u>177479.7917</u>
Easting	<u>516129.2543</u>
Date	<u>11/28/01</u>

I hereby certify that this United States public land survey monument record is correct and complete to the best of my knowledge and belief.

David Zieglmeier Date 7/21/22

David Zieglmeier Anoka County Surveyor
Minnesota License Number 46179

HISTORY OF GOVERNMENT CORNER

Page No. 85

County of Anoka

State of Minnesota

East 1/4 Corner of Sec. 21 Township 32 Range 23

CORNER HISTORY:

February 1855 - This corner was established by Hiram Taylor, Deputy Surveyor. Taylor marked the position by "Set quarter section post" with one bearing tree marked as an accessory.

May 1, 1962 - Set cast iron monument down 0.5'± using area resurvey. Established ties to monument.

July 15, 1964 - Found cast iron monument and updated ties.

August 4, 1966 - Found cast iron monument and updated ties.

June 12, 1975 - Found cast iron monument and updated ties.

June 15, 1978 - Found cast iron monument and updated ties.

June 18, 1984 - Found cast iron monument and updated ties.

June 29, 1987 - Found cast iron monument and updated ties.

November 26, 1991 - Found cast iron monument and updated ties.

July 27, 1993 - Found cast iron monument and set construction ties prior to road construction.

November 23, 1993 - Set cast iron monument after road construction and updated ties.

July 31, 1996 - Found cast iron monument and updated ties.

November 28, 2001 - Established NAD 1983 (1996 adj.) Anoka County project coordinates by static GPS methods.

February 28, 2011 - Found cast iron monument and updated ties.

March 10, 2017 - Found cast iron monument. Verified position by VRS GPS methods. Updated ties.

June 13, 2018 - Found cast iron monument. Verified position by VRS GPS methods and updated ties prior to road construction. Removed monument.

September 17, 2018 - Set cast iron monument after construction using static GPS methods. Verified position by VRS GPS methods. Updated ties.

January 26, 2021 - Found cast iron monument. Verified position by VRS GPS methods. Updated ties.