

CERTIFICATE OF LOCATION OF GOVERNMENT CORNER

County of Anoka

State of Minnesota

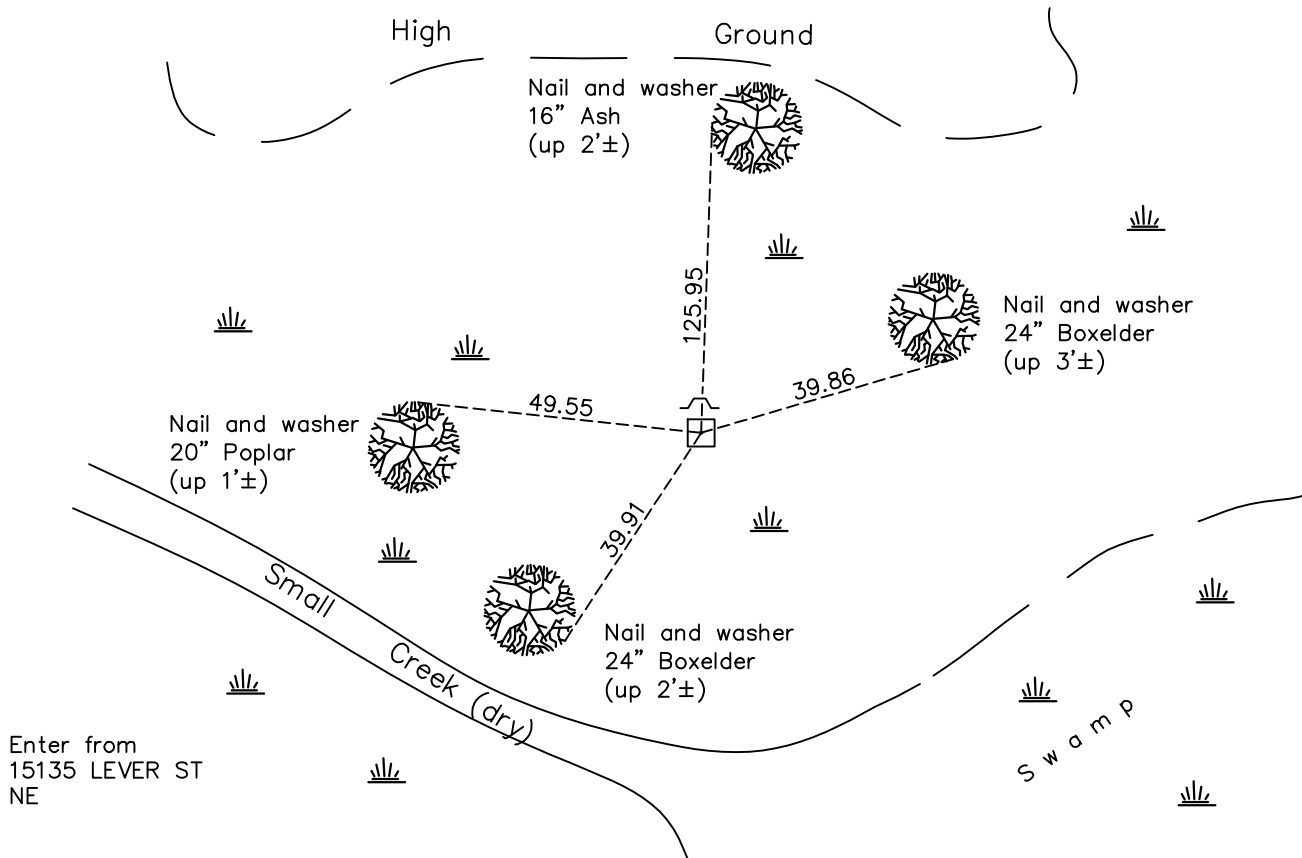
East 1/4 Corner of Sec. 24 Township 32 Range 23

On the 3rd day of May, 1965, the described corner was evidenced by a concrete monument

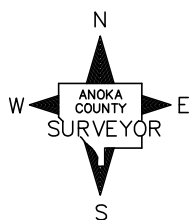
and to perpetuate the location of said corner, at the exact location thereof, a permanent marker was placed consisting of the same concrete monument (top broken) with a sign and post on the north side

AND on the 16th day of March, 2022, said permanent marker was found up 0.5'± with a spike in the top center of the monument and the ties were updated

Updated reference ties are as shown below.



Enter from
15135 LEVER ST
NE



Revision Date

03/18/22

N.A.D. 1983 Coordinates
(1996 Adjustment)

County Project Coordinates	
Northing	<u>177270.4909</u>
Easting	<u>532027.6748</u>
Date	<u>3/05/02</u>

I hereby certify that this United States public land survey monument record is correct and complete to the best of my knowledge and belief.

David Zieglmeier Date 12/11/23

David M. Zieglmeier, Anoka County Surveyor
Minnesota License Number 46179

HISTORY OF GOVERNMENT CORNER

Page No. 88

County of Anoka

State of Minnesota

East 1/4 Corner of Sec. 24 Township 32 Range 23

CORNER HISTORY:

5/03/1965, 6/22/1971, 1/22/1974, 3/17/1994, 3/05/2002 - Found concrete monument with top broken off, up 1.5'± and ties updated.

April 4, 2011 - Found concrete monument with metal spike in top center and the ties were updated.

March 23, 2017 - Found concrete monument up 0.5'±, position verified by VRS GPS and the ties were updated.

March 16, 2022 - Found Concrete monument up 0.5'± with spike in top center. Position verified by VRS GPS methods. Updated ties.