

CERTIFICATE OF LOCATION OF GOVERNMENT CORNER

County of Anoka

State of Minnesota

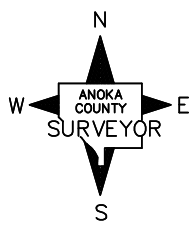
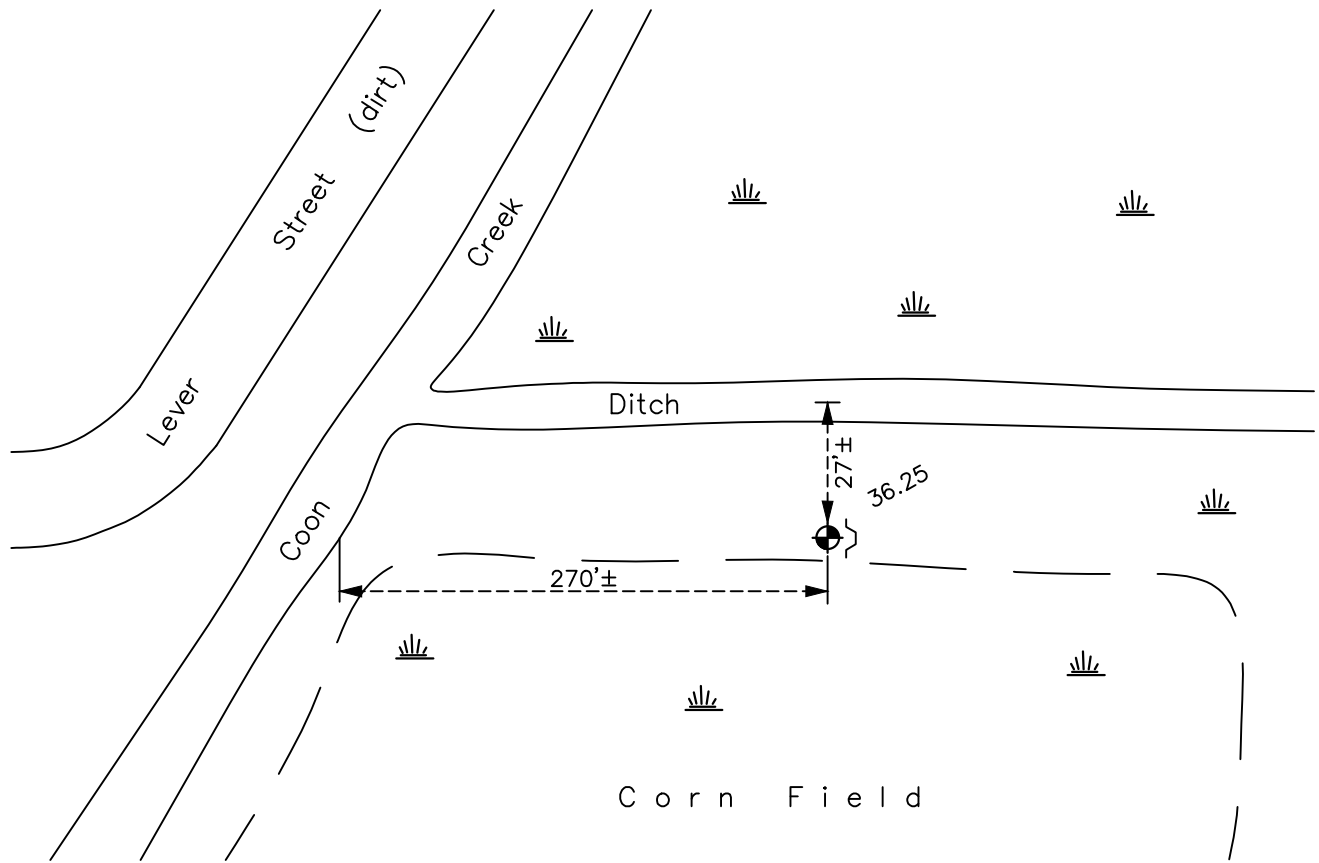
South 1/4 Corner of Sec. 24 Township 32 Range 23

On the 22nd day of November, 1965, the described corner was evidenced by area resurvey

and to perpetuate the location of said corner, at the exact location thereof, a permanent marker was placed consisting of a cast iron monument with a sign and post on the east side

AND on the 13th day of April, 2021, said permanent marker was found flush, no ties available.

Updated reference ties are as shown below.



Revision Date
7/23/2021

N.A.D. 1983 Coordinates
(1996 Adjustment)

County Project Coordinates	
Northing	174676.9953
Easting	529367.8536
Date	5/05/05

I hereby certify that this United States public land survey monument record is correct and complete to the best of my knowledge and belief.
David Zieglmeier Date 7/21/22
 David Zieglmeier Anoka County Surveyor
 Minnesota License Number 46179

HISTORY OF GOVERNMENT CORNER

Page No. 90

County of Anoka

State of Minnesota

South 1/4 Corner of Sec. 24 Township 32 Range 23

CORNER HISTORY:

February 1855 - This corner was established by Hiram Taylor, Deputy Surveyor. Taylor marked the position by "Set quarter section post" with one bearing tree marked as an accessory.

November 22, 1965 - Set 1" red and white iron pipe up 3'± using area resurvey. Established ties to iron pipe.

August 3, 1966 - Found red and white iron pipe and updated ties.

June 22, 1971 - Found red and white iron pipe and updated ties.

July 2, 1984 - Found red and white iron pipe and updated ties.

January 7, 1991 - Found red and white iron pipe and updated ties.

February 11, 1994 - Found red and white iron pipe with a sign and post on north side. Updated ties.

September 4, 1996 - Found red and white iron pipe and updated ties.

February 12, 2002 - Found red and white iron pipe and updated ties.

May 5, 2005 - Found red and white iron pipe and replaced with a cast iron monument. Set sign and post on the east side. Updated ties. Established NAD 1983 (1996 adj.) Anoka County project coordinates by static GPS methods.

March 4, 2011 - Found cast iron monument down 0.4'± and updated ties.

March 23, 2017 - Found cast iron monument flush. Verified position by VRS GPS methods. Updated ties.

April 13, 2021 - Found cast iron monument flush. Verified position by VRS GPS methods. No ties available.