

CERTIFICATE OF LOCATION OF GOVERNMENT CORNER

County of Anoka

State of Minnesota

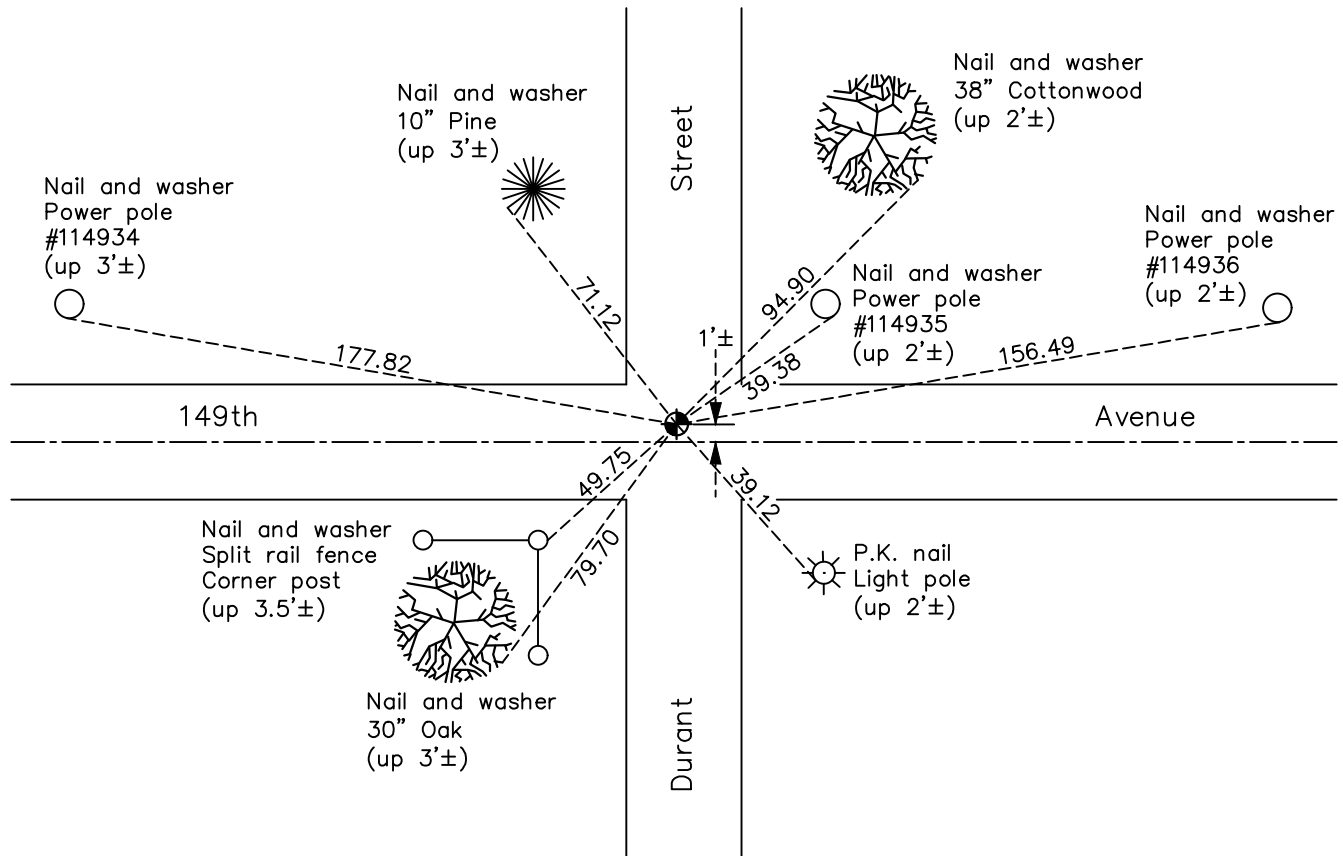
Southwest Corner of Sec. 24 Township 32 Range 23

On the 24th day of April, 1962, the described corner was evidenced by a granite monument

and to perpetuate the location of said corner, at the exact location thereof, a permanent marker was placed consisting of a cast iron monument

AND on the 17th day of February, 2021, said permanent marker was found cast iron monument flush with surface and the ties were updated.

Updated reference ties are as shown below.



Revision Date
7/23/2021

N.A.D. 1983 Coordinates
(1996 Adjustment)

County Project Coordinates	
Northing	<u>174714.1442</u>
Easting	<u>526708.4781</u>
Date	<u>11/29/01</u>

I hereby certify that this United States public land survey monument record is correct and complete to the best of my knowledge and belief.
David Zieglmeier Date 7/21/22
David Zieglmeier Anoka County Surveyor
Minnesota License Number 46179

HISTORY OF GOVERNMENT CORNER

Page No. 91

County of Anoka

State of Minnesota

Southwest Corner of Sec. 24 Township 32 Range 23

CORNER HISTORY:

February 1855 - This corner was established by Hiram Taylor, Deputy Surveyor. Taylor marked the position by "Set post corner to sections 23, 24, 25 & 26" with three bearing trees marked as accessories.

April 24, 1962 - Found 6" square granite monument flush. Set 3/4" iron pipe on north side. Updated ties.

July 9, 1964 - Found 6" square granite monument and updated ties.

August 3, 1966 - Found 6" square granite monument and updated ties.

May 25, 1971 - Found 6" square granite monument and updated ties.

July 18, 1975 - Found 6" square granite monument and updated ties.

June 16, 1978 - Found 6" square granite monument and updated ties.

June 28, 1984 - Found 6" square granite monument and updated ties.

September 14, 1990 - Reset a cast iron monument down 0.5'± after road construction. Updated ties.

June 23, 1992 - Found cast iron monument. Set construction ties and updated corner ties prior to construction. Removed monument.

August 13, 1992 - Reset cast iron monument after construction and updated ties.

March 23, 1994 - Found cast iron monument flush and updated ties.

August 2, 1996 - Found cast iron monument and updated ties.

November 29, 2001 - Established NAD 1983 (1996 adj.) Anoka County project coordinates by static GPS methods.

March 29, 2011 - Found cast iron monument and updated ties.

June 19, 2012 - Found cast iron monument with top broken off. Set construction ties, updated corner ties and verified position of center fin by VRS GPS methods prior to road overlay. Removed broken monument.

March 4, 2016 - Set temporary P.K. nail using construction ties. Checked corner ties.

Unknown date - Found temporary P.K. nail (assumed). Verified position by VRS GPS methods. Updated ties.

June 12, 2017 - Replaced temporary P.K. nail with cast iron monument and updated ties.

February 17, 2021 - Found cast iron monument, updated ties and verified position by VRS GPS method.