

CERTIFICATE OF LOCATION OF GOVERNMENT CORNER

County of Anoka

State of Minnesota

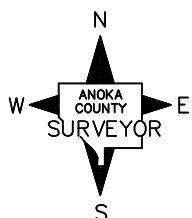
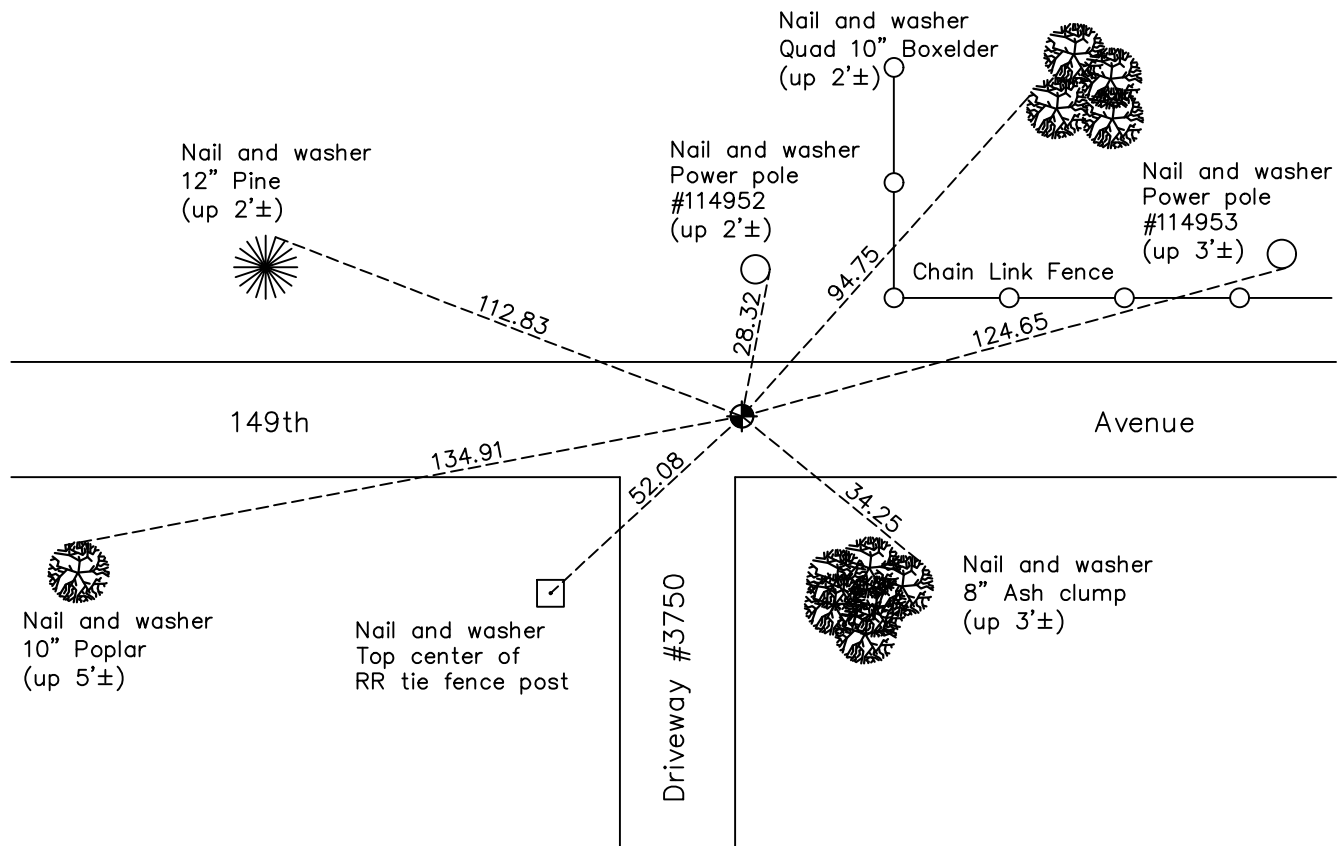
North $\frac{1}{4}$ Corner of Sec. 26 Township 32 Range 23

On the 22nd day of August, 1966, the described corner was evidenced by area resurvey

and to perpetuate the location of said corner, at the exact location thereof, a permanent marker was placed consisting of a cast iron monument

AND on the 5th day of April, 2021, said permanent marker was found flush along
double yellow stripe and updated ties.

Updated reference ties are as shown below.



Revision Date
7/23/2021

N.A.D. 1983 Coordinates
(1996 Adjustment)

County Project Coordinates	
Northing	<u>174710.3140</u>
Easting	<u>524081.8810</u>
Date	<u>11/29/01</u>

I hereby certify that this United States public land survey monument record is correct and complete to the best of my knowledge and belief.

David Zieglmeier Date 7/21/22

David Zieglmeier Anoka County Surveyor
Minnesota License Number 46179

HISTORY OF GOVERNMENT CORNER

Page No. 92

County of Anoka

State of Minnesota

North 1/4 Corner of Sec. 26 Township 32 Range 23

CORNER HISTORY:

February 1855 - This corner was established by Hiram Taylor, Deputy Surveyor. Taylor marked the position by "Set quarter section post" with one bearing tree marked as an accessory.

August 26, 1966 - Set cast iron monument down 0.4'± in dirt road using area resurvey. Established ties to monument.

May 25, 1971 - Found cast iron monument and updated ties.

June 13, 1975 - Found cast iron monument and updated ties.

June 16, 1978 - Replaced broken cast iron monument with a new cast iron monument down 0.5'±. Updated ties.

June 28, 1984 - Found cast iron monument and updated ties.

June 23, 1992 - Found cast iron monument and updated ties prior to construction. Removed monument.

August 13, 1992 - Reset cast iron monument after construction and updated ties.

March 25, 1994 - Found cast iron monument flush and updated ties.

August 2, 1996 - Found cast iron monument and updated ties.

November 29, 2001 - Established NAD 1983 (1996 adj.) Anoka County project coordinates by static GPS methods.

March 29, 2011 - Found cast iron monument and updated ties.

August 24, 2012 - Found cast iron monument down. Raised flush after road overlay.

March 13, 2017 - Found cast iron monument. Verified position by VRS GPS methods. Updated ties.

April 5, 2021 - Found cast iron monument. Verified position by VRS GPS method and updated ties.