

CERTIFICATE OF LOCATION OF GOVERNMENT CORNER

County of Anoka

State of Minnesota

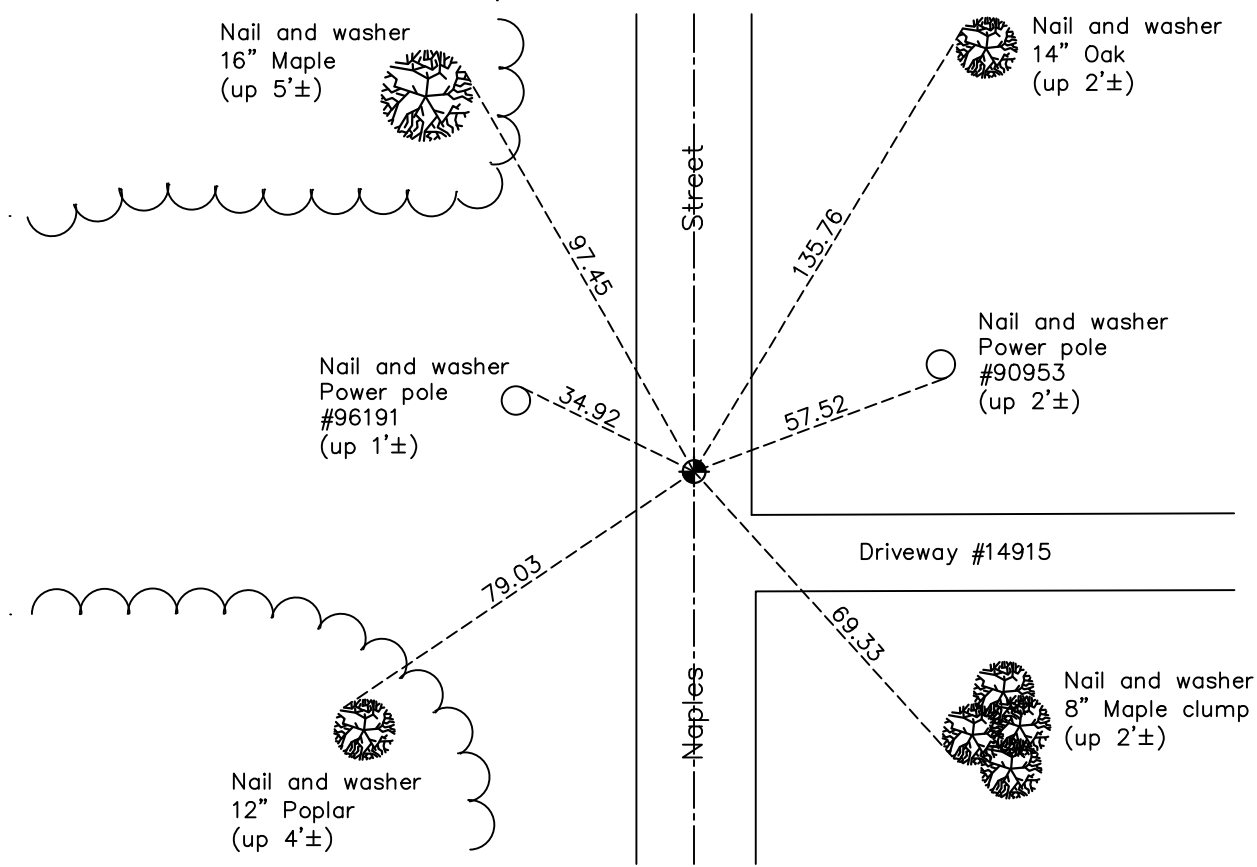
Southwest Corner of Sec. 23 Township 32 Range 23

On the 24th day of August, 1966, the described corner was evidenced by area resurvey

and to perpetuate the location of said corner, at the exact location thereof, a permanent marker was placed consisting of a cast iron monument

AND on the 5th day of April, 2021, said permanent marker was found on centerline flush and the ties were updated.

Updated reference ties are as shown below.



N
W ANOKA COUNTY SURVEYOR E
S

Revision Date
7/23/2021

N.A.D. 1983 Coordinates
(1996 Adjustment)

County Project Coordinates	
Northing	<u>174747.4802</u>
Easting	<u>521441.2931</u>
Date	<u>11/20/01</u>

I hereby certify that this United States public land survey monument record is correct and complete to the best of my knowledge and belief.

David Zieglmeier Date 7/21/22

David Zieglmeier Anoka County Surveyor
Minnesota License Number 46179

HISTORY OF GOVERNMENT CORNER

Page No. 93

County of Anoka

State of Minnesota

Southwest Corner of Sec. 23 Township 32 Range 23

CORNER HISTORY:

February 1855 - This corner was established by Hiram Taylor, Deputy Surveyor. Taylor marked the position by "Set post corner to sections 22, 23, 26 & 27" with two bearing trees marked as accessories.

August 24, 1966 - Set cast iron monument down 0.3'± in shoulder of road using area resurvey. Established ties to monument.

May 5, 1971 - Found cast iron monument down 1'± and updated ties.

July 18, 1975 - Found cast iron monument and updated ties.

June 16, 1978 - Found cast iron monument and updated ties.

June 28, 1984 - Found cast iron monument and updated ties.

May 8, 1992 - Found cast iron monument and updated ties.

July 10, 1994 - Found cast iron monument and set construction ties prior to road construction.

April 3, 1995 - Reset cast iron monument using construction ties after road construction. Updated ties.

August 28, 1995 - Replaced cast iron monument after road construction. Updated ties.

August 2, 1996 - Found cast iron monument and updated ties.

November 20, 2001 - Established NAD 1983 (1996 adj.) Anoka County project coordinates by static GPS methods.

March 22, 2011 - Found cast iron monument and updated ties.

March 10, 2017 - Found cast iron monument on centerline. Verified position by VRS GPS methods. Updated ties.

April 5, 2021 - Found cast iron monument on centerline flush and updated ties.