

CERTIFICATE OF LOCATION OF GOVERNMENT CORNER

County of Anoka

State of Minnesota

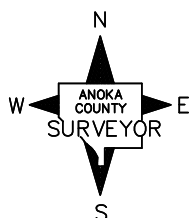
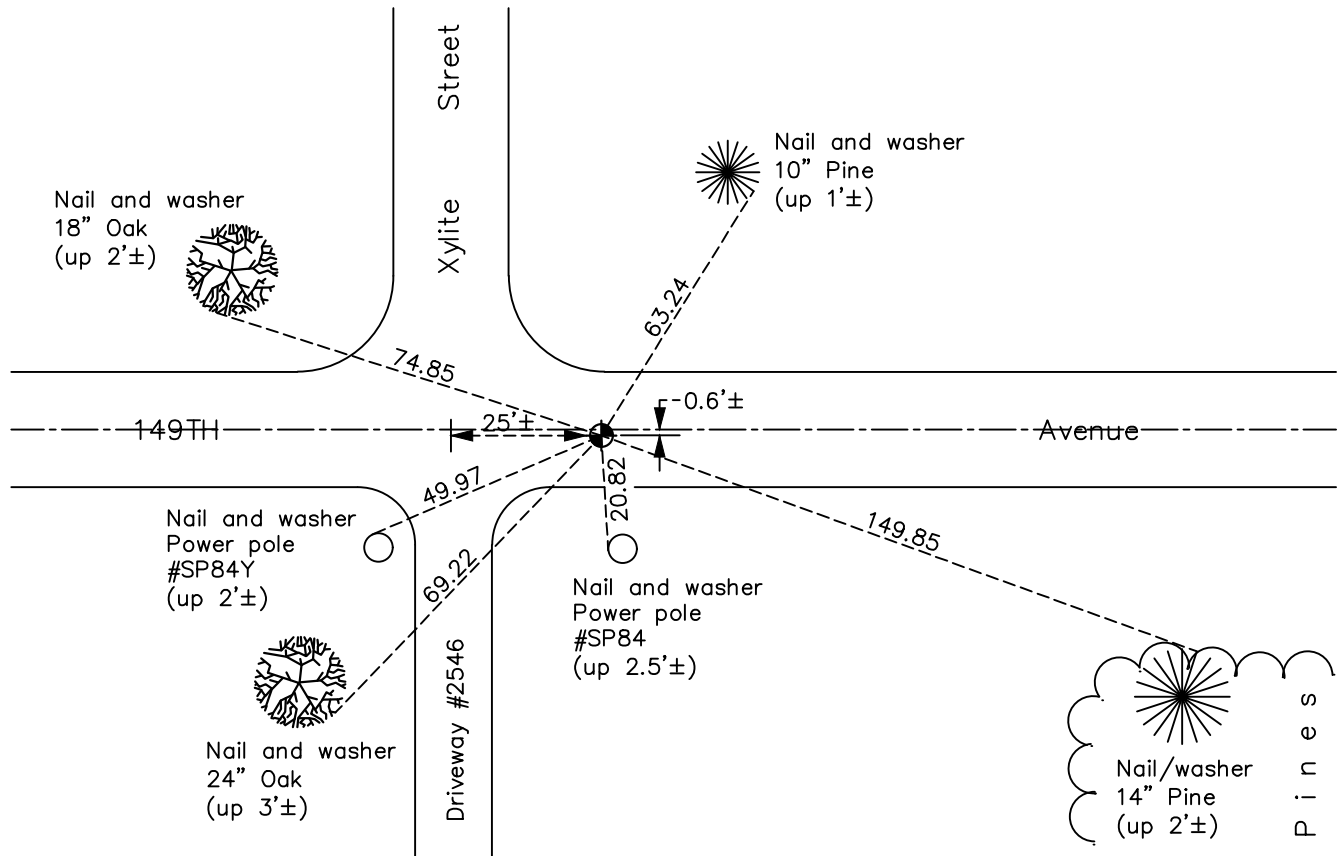
Southeast Corner of Sec. 21 Township 32 Range 23

On the 15th day of September, 1960, the described corner was evidenced by a granite monument

and to perpetuate the location of said corner, at the exact location thereof, a permanent marker was placed consisting of a cast iron monument set in place of granite monument (removed on July 10, 1994) after construction

AND on the 21st day of April, 2021, said permanent marker was found covered over and broken. Replaced CIM set flush to surface and updated ties.

Updated reference ties are as shown below.



Revision Date
7/23/2021

N.A.D. 1983 Coordinates
(1996 Adjustment)

County Project Coordinates	
Northing	<u>174827.7841</u>
Easting	<u>516154.6281</u>
Date	<u>11/20/01</u>

I hereby certify that this United States public land survey monument record is correct and complete to the best of my knowledge and belief.

_____ Date _____

David Zieglmeier Anoka County Surveyor
Minnesota License Number 46179

HISTORY OF GOVERNMENT CORNER

Page No. 95

County of Anoka

State of Minnesota

Southeast Corner of Sec. 21 Township 32 Range 23

CORNER HISTORY:

February 1855 - This corner was established by Hiram Taylor, Deputy Surveyor. Taylor marked the position by "Set post corner to sections 21, 22, 27 & 28" with two bearing trees marked as accessories.

June 9, 1960 - Found granite monument up 8" and leaning westerly 0.44'±. Updated ties.

June 15, 1960 - Straightened granite monument and set flush with the surface. Updated ties.

July 23, 1964 - Found granite monument and updated ties.

August 4, 1966 - Found granite monument and updated ties.

June 23, 1971 - Found granite monument flush and updated ties.

June 13, 1975 - Found granite monument and updated ties.

June 16, 1978 - Found granite monument flush and updated ties.

June 28, 1984 - Found granite monument and updated ties.

November 16, 1990 - Found granite monument flush and updated ties.

December 21, 1990 - Found granite monument and updated ties.

November 25, 1991 - Found granite monument and updated ties.

July 10, 1994 - Found granite monument and set construction ties prior to construction. Removed monument.

August 3, 1995 - Set cast iron monument after road construction. Updated ties.

July 31, 1996 - Found cast iron monument and updated ties.

November 20, 2001 - Established NAD 1983 (1996 adj.) Anoka County project coordinates by static GPS methods.

February 18, 2011 - Found cast iron monument and updated ties.

March 15, 2017 - Found cast iron monument. Verified position by VRS GPS methods. Updated ties.

April 21, 2021 - Found cast iron monument covered over with bit and broken. Replaced position of corner with a CIM, set flush to surface. Updated ties and verified position of corner by VRS GPS method.