

# CERTIFICATE OF LOCATION OF GOVERNMENT CORNER

County of Anoka

State of Minnesota

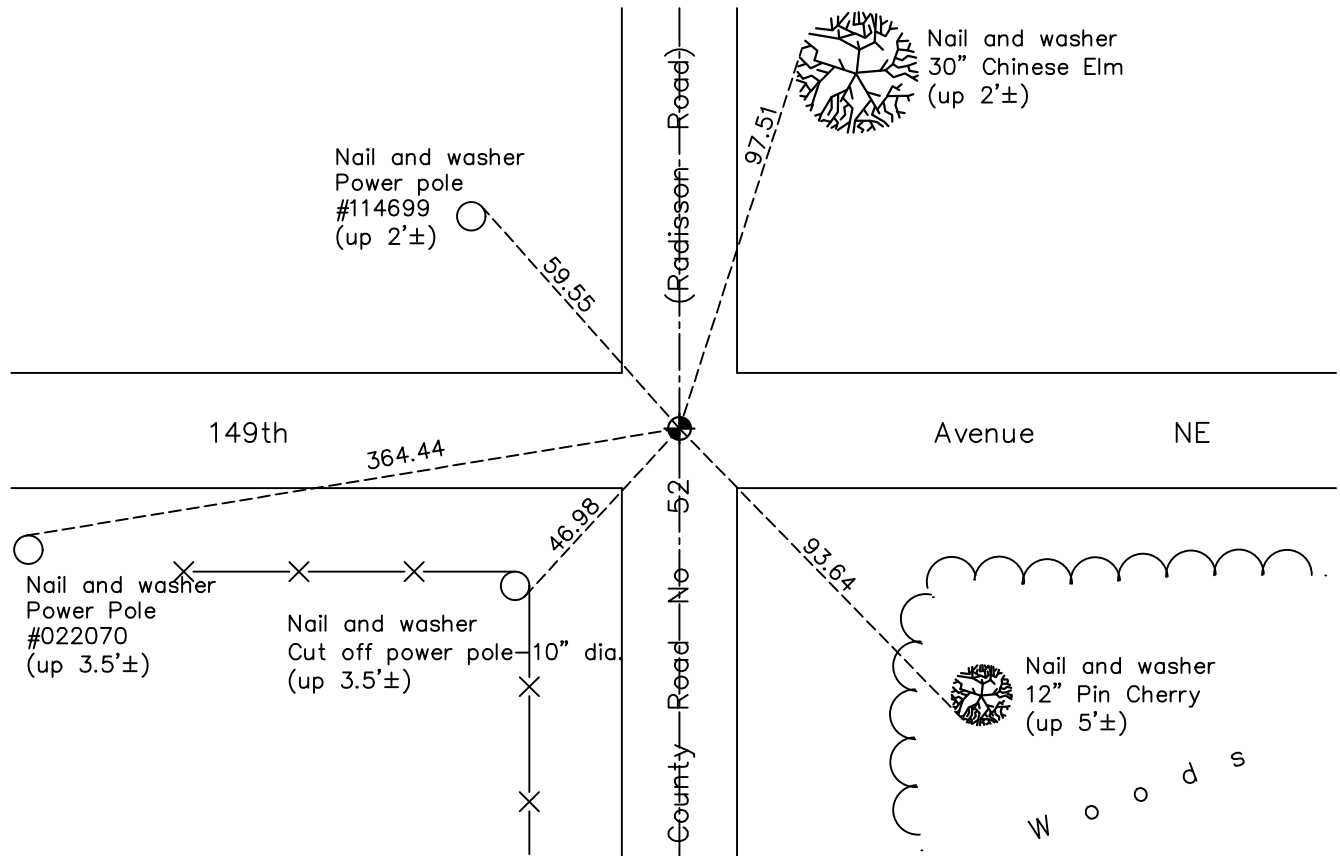
## North 1/4 Corner of Sec. 28 Township 32 Range 23

On the 6th day of July, 1960, the described corner was evidenced by a granite monument

and to perpetuate the location of said corner, at the exact location thereof, a permanent marker was placed consisting of a cast iron monument

AND on the 7th day of April, 2021, said permanent marker was found and the ties were updated.

Updated reference ties are as shown below.



Revision Date  
**7/23/2021**

N.A.D. 1983 Coordinates  
 (1996 Adjustment)

County Project Coordinates	
Northing	<u>174878.2240</u>
Easting	<u>513510.0289</u>
Date	<u>11/30/01</u>

I hereby certify that this United States public land survey monument record is correct and complete to the best of my knowledge and belief.  
*David Zieglmeier* Date 7/21/22  
 David Zieglmeier Anoka County Surveyor  
 Minnesota License Number 46179

# HISTORY OF GOVERNMENT CORNER

Page No. 96

County of Anoka

State of Minnesota

## North 1/4 Corner of Sec. 28 Township 32 Range 23

### **CORNER HISTORY:**

February 1855 - This corner was established by Hiram Taylor, Deputy Surveyor. Taylor marked the position by "Set quarter section post" with one bearing tree marked as an accessory.

August 10, 1959 - Anoka County Highway department found a monument and updated the ties.

July 6, 1960 - Found granite monument down 2'± and updated ties.

July 20, 1964 - Found granite monument down 2'± and set a cast iron monument flush on top of granite. Updated ties.

August 3, 1966 - Found cast iron monument and updated ties.

May 5, 1971 - Found cast iron monument and updated ties.

June 13, 1975 - Found cast iron monument and updated ties.

June 16, 1978 - Found cast iron monument and updated ties.

June 28, 1984 - Found cast iron monument and updated ties.

January 25, 1991 - Found cast iron monument and updated ties.

November 20, 1991 - Found cast iron monument and updated ties.

July 31, 1996 - Found cast iron monument and updated ties.

November 30, 2001 - Established NAD 1983 (1996 adj.) Anoka County project coordinates by static GPS methods.

March 2, 2011 - Found cast iron monument and updated ties.

July 28, 2014 - Found cast iron monument. Set construction ties and updated corner ties prior to road construction.

October 28, 2014 - Found granite monument down 1.5'± under broken off cast iron monument. Set new cast iron monument flush on top of granite after construction. Verified position by VRS and static GPS methods. Updated ties.

March 15, 2017 - Found cast iron monument. Verified position by VRS GPS methods. Updated ties.

April 7, 2021 - Found cast iron monument. Verified position by VRS GPS methods. Updated ties.