

CERTIFICATE OF LOCATION OF GOVERNMENT CORNER

County of Anoka

State of Minnesota

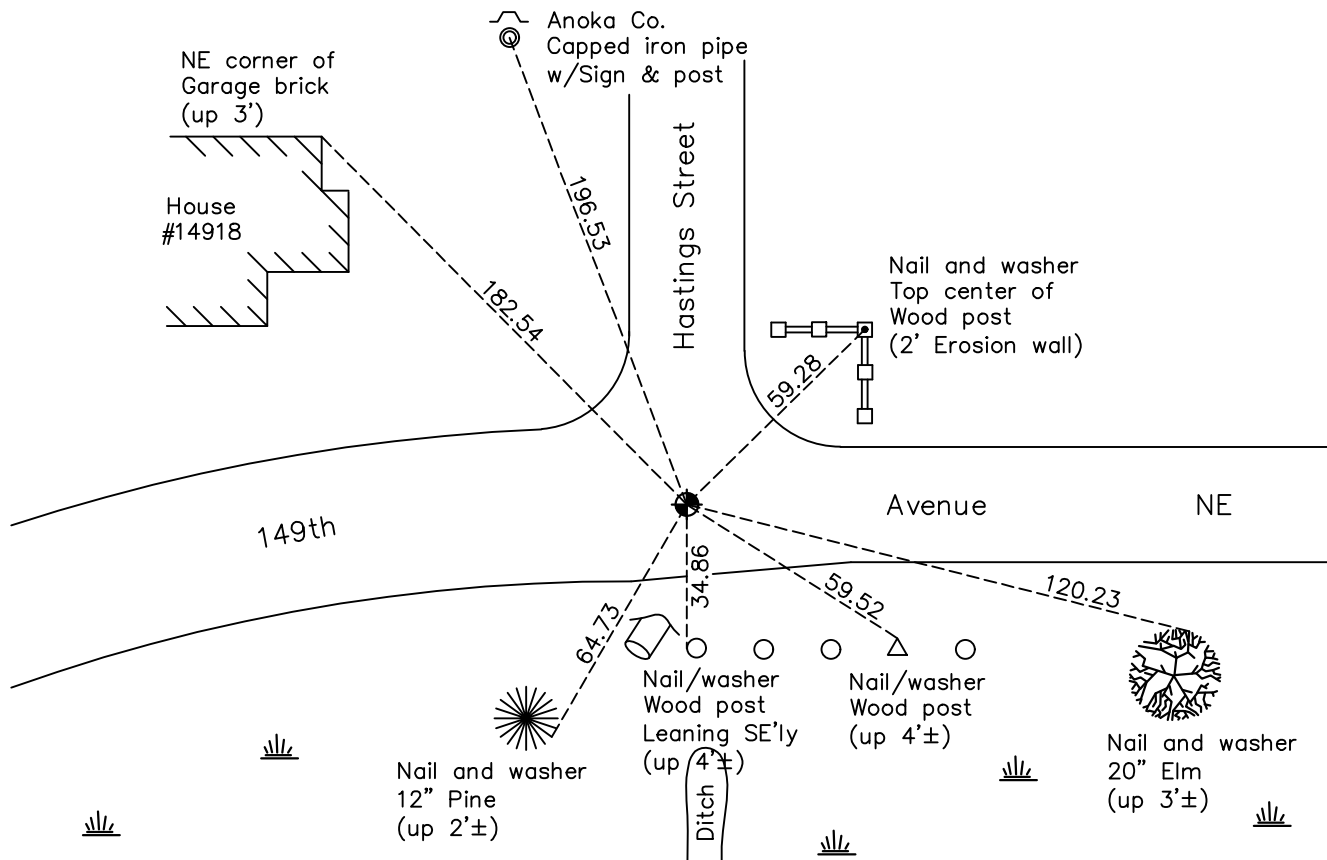
Northwest Corner of Sec. 28 Township 32 Range 23

On the 6th day of February, 1961, the described corner was evidenced by a granite monument

and to perpetuate the location of said corner, at the exact location thereof, a permanent marker was placed consisting of a cast iron monument

AND on the 15th day of March, 2021, said permanent marker was found flush and the ties were updated.

Updated reference ties are as shown below.



Revision Date
7/23/2021

N.A.D. 1983 Coordinates
 (1996 Adjustment)

County Project Coordinates	
Northing	<u>174925.2016</u>
Easting	<u>510865.9981</u>
Date	<u>8/02/96</u>

I hereby certify that this United States public land survey monument record is correct and complete to the best of my knowledge and belief.
David Zieglmeier Date 7/21/22
 David Zieglmeier Anoka County Surveyor
 Minnesota License Number 46179

HISTORY OF GOVERNMENT CORNER

Page No. 97

County of Anoka

State of Minnesota

Northwest Corner of Sec. 28 Township 32 Range 23

CORNER HISTORY:

February 1855 - This corner was established by Hiram Taylor, Deputy Surveyor. Taylor marked the position by "Set post corner to sections 20, 21, 28 & 29" with two bearing trees marked as accessories.

January 12, 1945 - Harvey Cartwright found a granite monument on a east/west fence line and farm road. Updated ties.

Unknown date - Replaced granite that was taken out by contractor digging the ditch. Set temporary tie points with 1/2" iron pipes.

February 6, 1961 - Found 6" square granite monument on center line in drainage ditch. Updated ties.

August 4, 1966 - Found granite monument and updated ties.

May 5, 1973 - Found granite monument and updated ties.

July 11, 1974 - Found in place 6" square granite monument. Set red and white iron pipe on north side up 4'±. No ties available.

July 23, 1981 - Found a 6" square granite monument up 0.7'± with a red and white iron pipe on the north side up 4'±. Updated ties.

June 28, 1984 - Found a 6" square granite monument up 0.7'± with a red and white iron pipe on the north side up 4'±. Updated ties.

May 4, 1990 - Found granite monument and set construction ties prior to road construction.

June 8, 1990 - Set cast iron monument flush after road construction. Updated ties.

November 26, 1991 - Found cast iron monument and updated ties.

August 2, 1996 - Found cast iron monument and updated ties. Established NAD 1983 (1996 adj.) Anoka County project coordinates by static GPS methods.

August 13, 2002 - Found cast iron monument and updated ties.

February 18, 2011 - Found cast iron monument and updated ties.

March 15, 2017 - Found cast iron monument. Verified position by VRS GPS methods. Updated ties.

August 24, 2018 - Removed CIM for construction.

November 14, 2019 - Reset cast iron monument and raised to be set flush with surface after Road Construction. Verified position by VRS GPS method. Updated ties.

March 15, 2021 - Found cast iron monument. Verified position by VRS GPS method. Updated ties.