

# CERTIFICATE OF LOCATION OF GOVERNMENT CORNER

County of Anoka

State of Minnesota

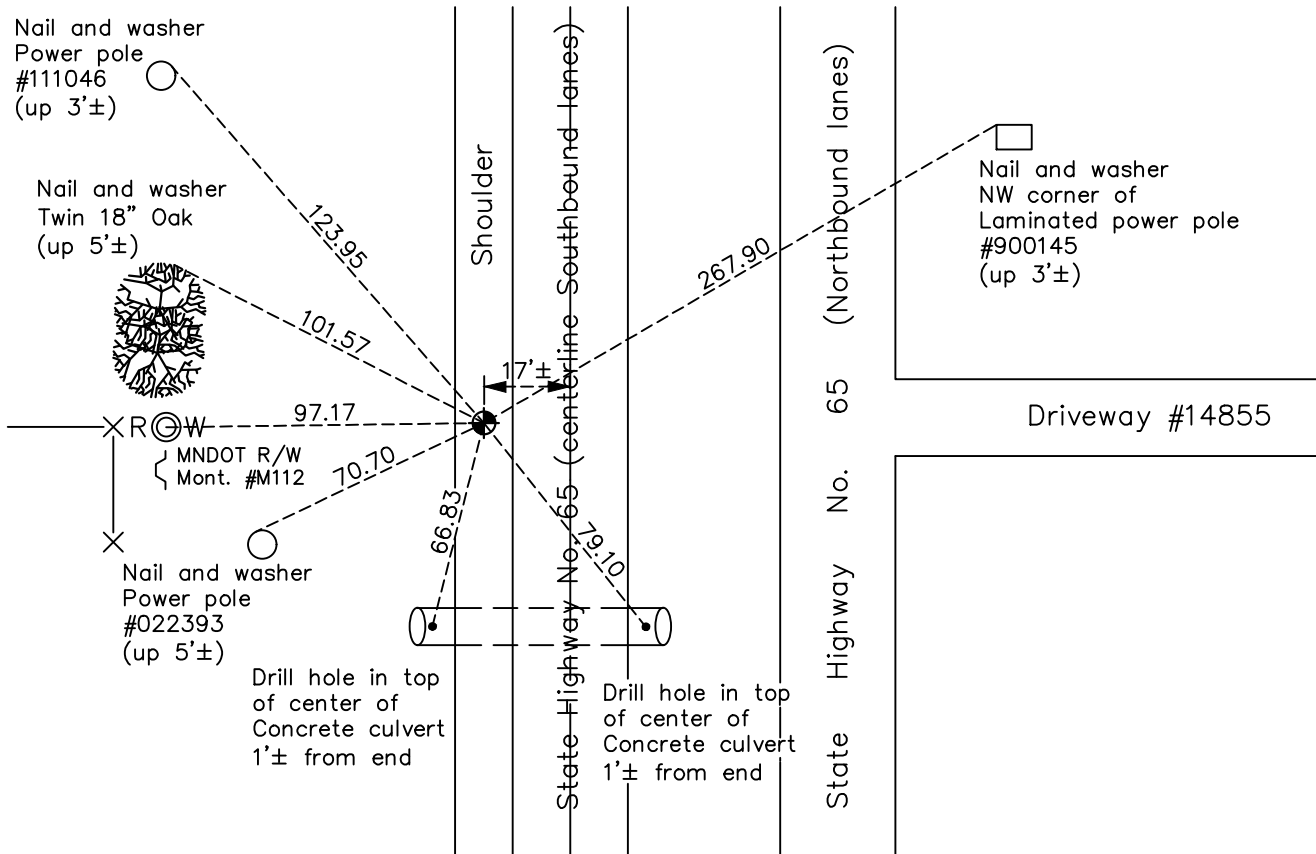
## North 1/4 Corner of Sec. 29 Township 32 Range 23

On the 12th day of September, 1960, the described corner was evidenced by a brass plug

and to perpetuate the location of said corner, at the exact location thereof, a permanent marker was placed consisting of a cast iron monument

AND on the 14th day of April, 2021, said permanent marker was found and the ties were updated

Updated reference ties are as shown below.



Revision Date  
7/26/2021

N.A.D. 1983 Coordinates  
(1996 Adjustment)

County Project Coordinates	
Northing	174897.2589
Easting	508169.9824
Date	12/12/01

I hereby certify that this United States public land survey monument record is correct and complete to the best of my knowledge and belief.  
*David Zieglmeier* Date 7/21/22  
 David Zieglmeier Anoka County Surveyor  
 Minnesota License Number 46179

# HISTORY OF GOVERNMENT CORNER

Page No. 98

County of Anoka

State of Minnesota

## North 1/4 Corner of Sec. 29 Township 32 Range 23

### **CORNER HISTORY:**

February 1855 - This corner was established by Hiram Taylor, Deputy Surveyor. Taylor marked the position by "Set quarter section post" with two bearing trees marked as accessories.

January 12, 1946 - Harvey Cartwright found a brass plug in center line pavement and updated the ties.

September 12, 1960 - Found brass plug flush with old concrete pavement. Updated ties.

August 9, 1966 - Found cast iron monument flush (brass plug missing). Updated ties.

June 7, 1971 - Found cast iron monument and updated ties.

June 16, 1975 - Found cast iron monument and updated ties.

June 28, 1978 - Found cast iron monument down due to highway resurfacing. Raised flush and updated ties.

July 2, 1984 - Found cast iron monument and updated ties.

January 25, 1991 - Found cast iron monument and updated ties.

November 25, 1991 - Found cast iron monument and updated ties.

August 13, 1996 - Found cast iron monument and updated ties.

December 12, 2001 - Established NAD 1983 (1996 adj.) Anoka County project coordinates by static GPS methods.

April 7, 2011 - Found cast iron monument broken and leaning southwesterly. Checked corner ties.

May 20, 2011 - Replaced broken cast iron monument with a new cast iron monument using static GPS methods. Updated ties.

March 15, 2017 - Found cast iron monument. Verified position by VRS GPS methods. Updated ties.

April 14, 2021 - Found cast iron monument. Verified position by VRS GPS methods. Updated ties.