

CERTIFICATE OF LOCATION OF GOVERNMENT CORNER

County of Anoka

State of Minnesota

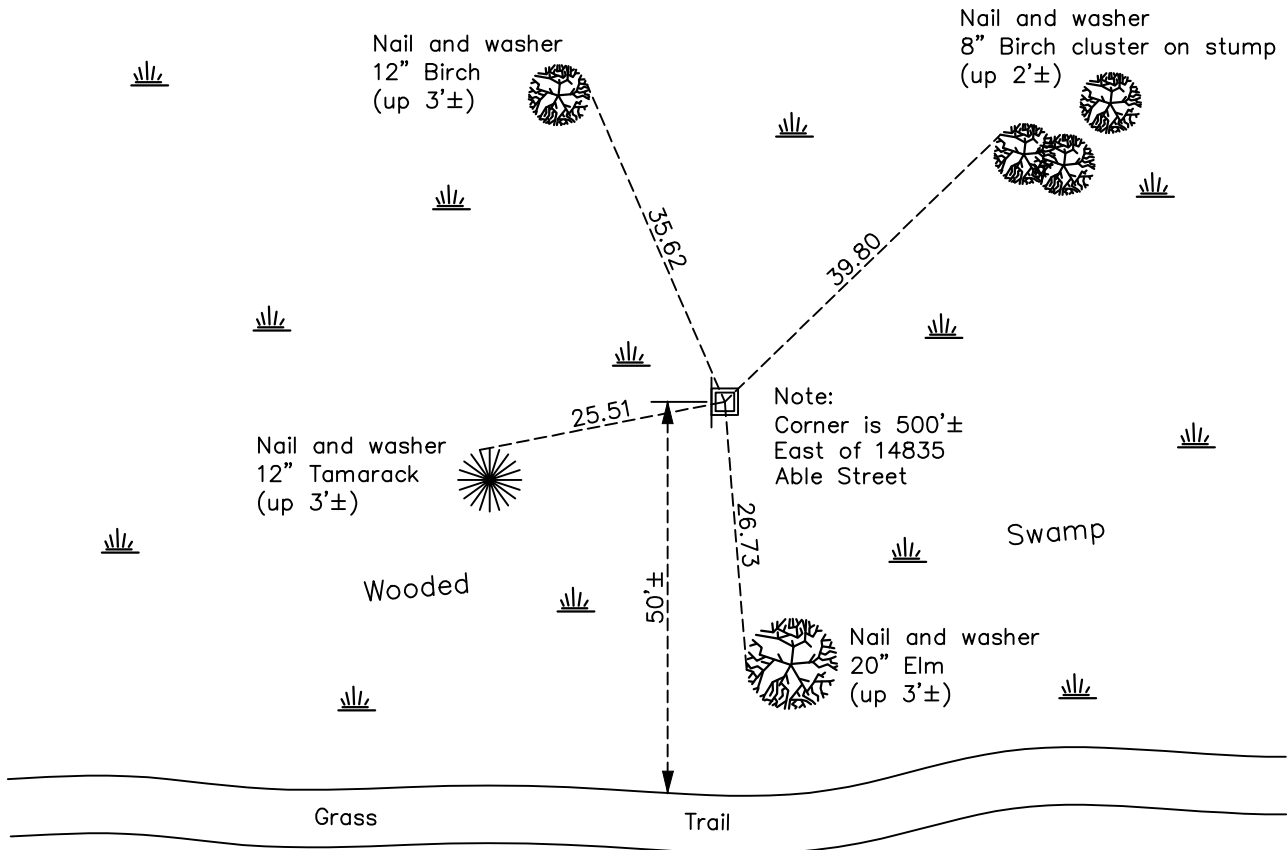
Southwest Corner of Sec. 20 Township 32 Range 23

On the 30th day of September, 1959, the described corner was evidenced by a 1 1/2" iron pipe

and to perpetuate the location of said corner, at the exact location thereof, a permanent marker was placed consisting of a red and white 2" square steel Telspar monument with a sign attached on the west side

AND on the 15th day of April, 2021, said permanent marker was found up 4'± and the ties were updated

Updated reference ties are as shown below.



Revision Date
7/26/2021

N.A.D. 1983 Coordinates
(1996 Adjustment)

County Project Coordinates	
Northing	<u>174866.7772</u>
Easting	<u>505489.8804</u>
Date	<u>2/06/02</u>

I hereby certify that this United States public land survey monument record is correct and complete to the best of my knowledge and belief.

David Zieglmeier Date 7/21/22

David Zieglmeier Anoka County Surveyor
Minnesota License Number 46179

HISTORY OF GOVERNMENT CORNER

Page No. 99

County of Anoka

State of Minnesota

Southwest Corner of Sec. 20 Township 32 Range 23

CORNER HISTORY:

February 1855 - This corner was established by Hiram Taylor, Deputy Surveyor. Taylor marked the position by "Set post corner to sections 19, 20, 29 & 30" with two bearing trees marked as accessories.

September 30, 1959 - Found 1-1/2" iron pipe up 6" and updated ties.

July 21, 1964 - Found 1-1/2" iron pipe and updated ties.

August 9, 1966 - Found 1-1/2" iron pipe and updated ties.

June 14, 1971 - Found 1-1/2" iron pipe and updated ties.

July 21, 1975 - Found 1-1/2" iron pipe and updated ties.

July 2, 1981 - Found 1-1/2" iron pipe and updated ties.

July 20, 1981 - Found 1-1/2" iron pipe and replaced it with a red and white iron pipe w/sign. Updated ties.

December 1, 1993 - Found red and white iron pipe and updated ties.

August 29, 1996 - Found red and white iron pipe and updated ties.

February 6, 2002 - Established NAD 1983 (1996 adj.) Anoka County project coordinates by static GPS methods.

March 18, 2011 - Found red and white 2" square steel Telspar up 4'± w/sign attached on the west side. Updated ties.

March 2017 - Found red and white 2" square steel Telspar up 4'± w/sign attached on the west side. Updated ties.

April 15, 2021 - Found red and white 2" square steel Telspar up 4'± w/sign attached on the west side. Updated ties.