

CERTIFICATE OF LOCATION OF GOVERNMENT CORNER

County of Anoka

State of Minnesota

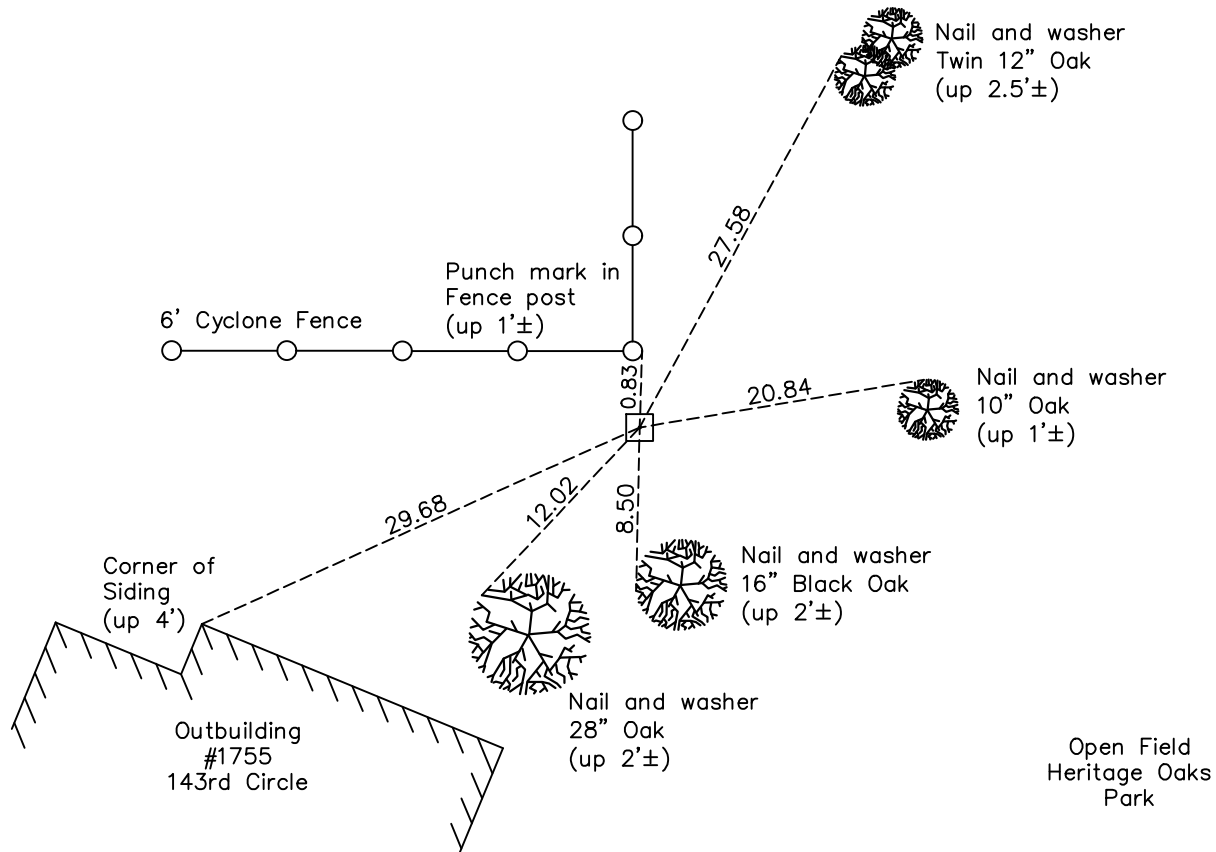
East 1/4 Corner of Sec. 29 Township 32 Range 23

On the 13th day of September, 1960, the described corner was evidenced by a granite monument

and to perpetuate the location of said corner, at the exact location thereof, a permanent marker was placed consisting of the same granite monument

AND on the 6th day of April, 2021, said permanent marker was found up 0.3'± and the ties were updated

Updated reference ties are as shown below.



Revision Date
7/26/17

N.A.D. 1983 Coordinates
(1996 Adjustment)

County Project Coordinates	
Northing	<u>172231.1381</u>
Easting	<u>510826.6042</u>
Date	<u>12/12/01</u>

I hereby certify that this United States public land survey monument record is correct and complete to the best of my knowledge and belief.

David Zieglmeier Date 7/21/22

David Zieglmeier Anoka County Surveyor
Minnesota License Number 46179

HISTORY OF GOVERNMENT CORNER

Page No. 103

County of Anoka

State of Minnesota

East 1/4 Corner of Sec. 29 Township 32 Range 23

CORNER HISTORY:

February 1855 - This corner was established by Hiram Taylor, Deputy Surveyor. Taylor marked the position by "Set quarter section post" with one bearing tree marked as an accessory.

January 12, 1945 - Harvey Caartwright found a granite monument up 0.8'± at fence corner of N-S-E-W run fences. Updated the ties.

September 13, 1960 - Found granite monument up 0.8'± and updated ties.

July 22, 1964 - Found granite monument and updated ties.

August 11, 1966 - Found granite monument and updated ties.

June 22, 1971 - Found granite monument up 0.8'± and updated ties.

June 19, 1975 - Found granite monument and updated ties.

June 19, 1978 - Found granite monument and updated ties.

July 11, 1984 - Found granite monument and updated ties.

June 16, 1992 - Found granite monument and updated ties.

August 21, 1996 - Found granite monument and updated ties.

December 12, 2001 - Found granite monument and updated ties. Established NAD 1983 (1996 adj.) Anoka County project coordinates by static GPS methods.

March 9, 2011 - Found granite monument up 0.3'± and updated ties.

March 16, 2017 - Found granite monument up 0.3'± and updated ties.

April 6, 2021 - Found granite monument up 0.3'± and updated ties.