

# CERTIFICATE OF LOCATION OF GOVERNMENT CORNER

County of Anoka

State of Minnesota

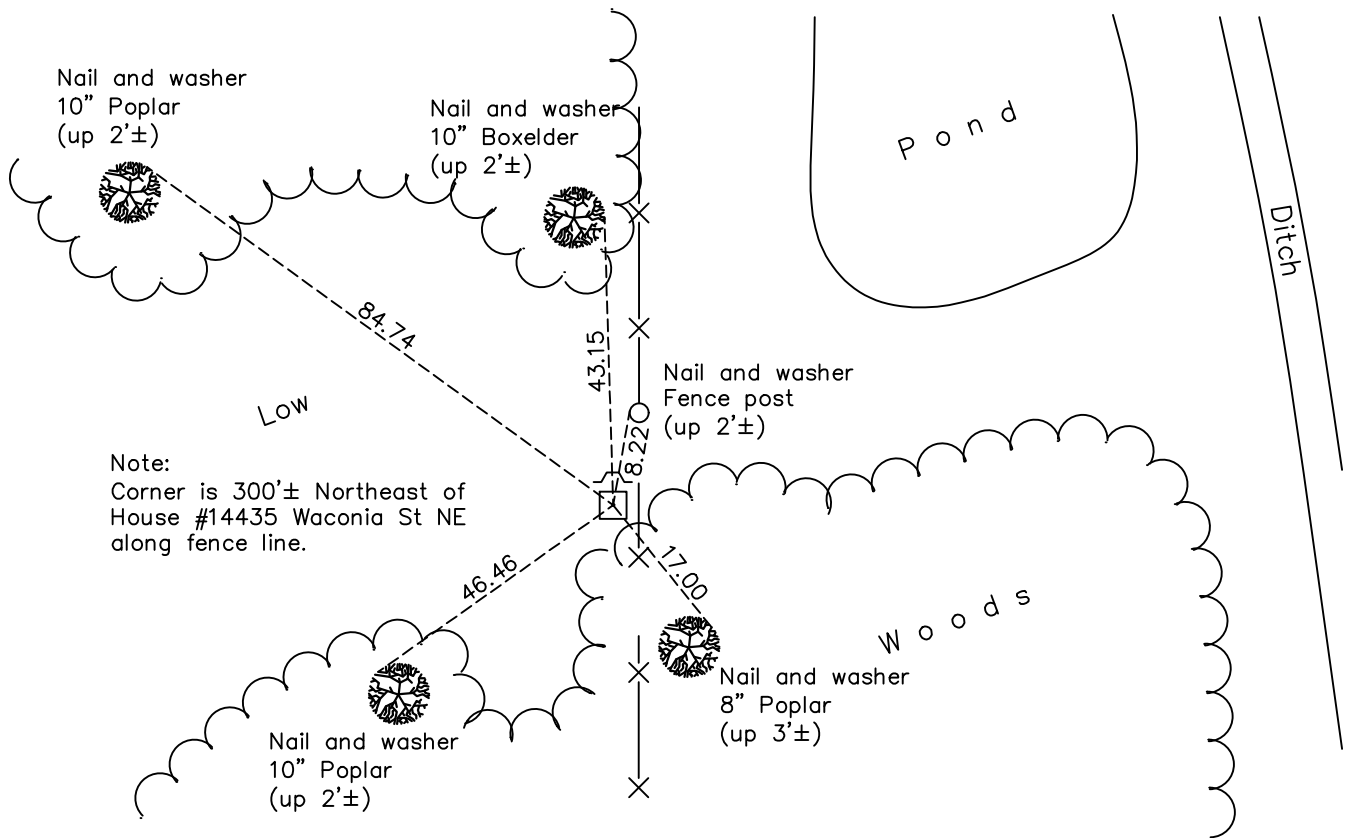
## East 1/4 Corner of Sec. 28 Township 32 Range 23

On the 9th day of December, 1975, the described corner was evidenced by a granite monument found by N.C. Hoium

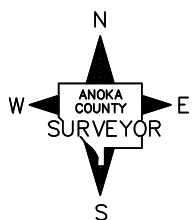
and to perpetuate the location of said corner, at the exact location thereof, a permanent marker was placed consisting of the same granite monument with a sign and post on the north side

AND on the 6th day of April, 2021, said permanent marker was found and the ties were updated

Updated reference ties are as shown below.



Note:  
Corner is 300'± Northeast of House #14435 Waconia St NE along fence line.



Revision Date  
7/26/2021

N.A.D. 1983 Coordinates  
(1996 Adjustment)

County Project Coordinates	
Northing	<u>172180.4332</u>
Easting	<u>516168.2089</u>
Date	<u>2/06/02</u>

I hereby certify that this United States public land survey monument record is correct and complete to the best of my knowledge and belief.

*David Zieglmeier* Date 7/21/22

David Zieglmeier Anoka County Surveyor  
Minnesota License Number 46179

# HISTORY OF GOVERNMENT CORNER

Page No. 104

County of Anoka

State of Minnesota

## East 1/4 Corner of Sec. 28 Township 32 Range 23

### **CORNER HISTORY:**

February 1855 - This corner was established by Hiram Taylor, Deputy Surveyor. Taylor marked the position by "Set quarter section post" with one bearing tree marked as an accessory.

October 23, 1961 - N.C. Hoium found a granite monument at a fence corner.

August 5, 1966 - Found granite monument up 1'± (located by N.C. Hoium) and updated ties.

December 9, 1975 - Found granite monument up 1'± and loose. Monument is not stable. Sign and post on the north side. Updated ties.

April 19, 1976 - Found granite monument and straightened. Updated ties.

June 19, 1978 - Found granite monument and updated ties.

July 10, 1981 - Found granite monument and updated ties.

July 13, 1984 - Found granite monument and updated ties.

Unknown date - Reset granite monument flush using area resurvey. Sign and post on the north side. Updated ties.

June 15, 1993 - Found granite monument and updated ties.

August 13, 1993 - Found granite monument and updated ties.

September 3, 1996 - Found granite monument and updated ties.

February 6, 2002 - Established NAD 1983 (1996 adj.) Anoka County project coordinates by static GPS methods.

March 8, 2011 - Found granite monument and updated ties.

March 16, 2017 - Found granite monument and updated ties.

April 6, 2021 - Found granite monument and updated ties.