

CERTIFICATE OF LOCATION OF GOVERNMENT CORNER

County of Anoka

State of Minnesota

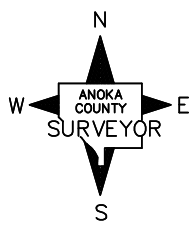
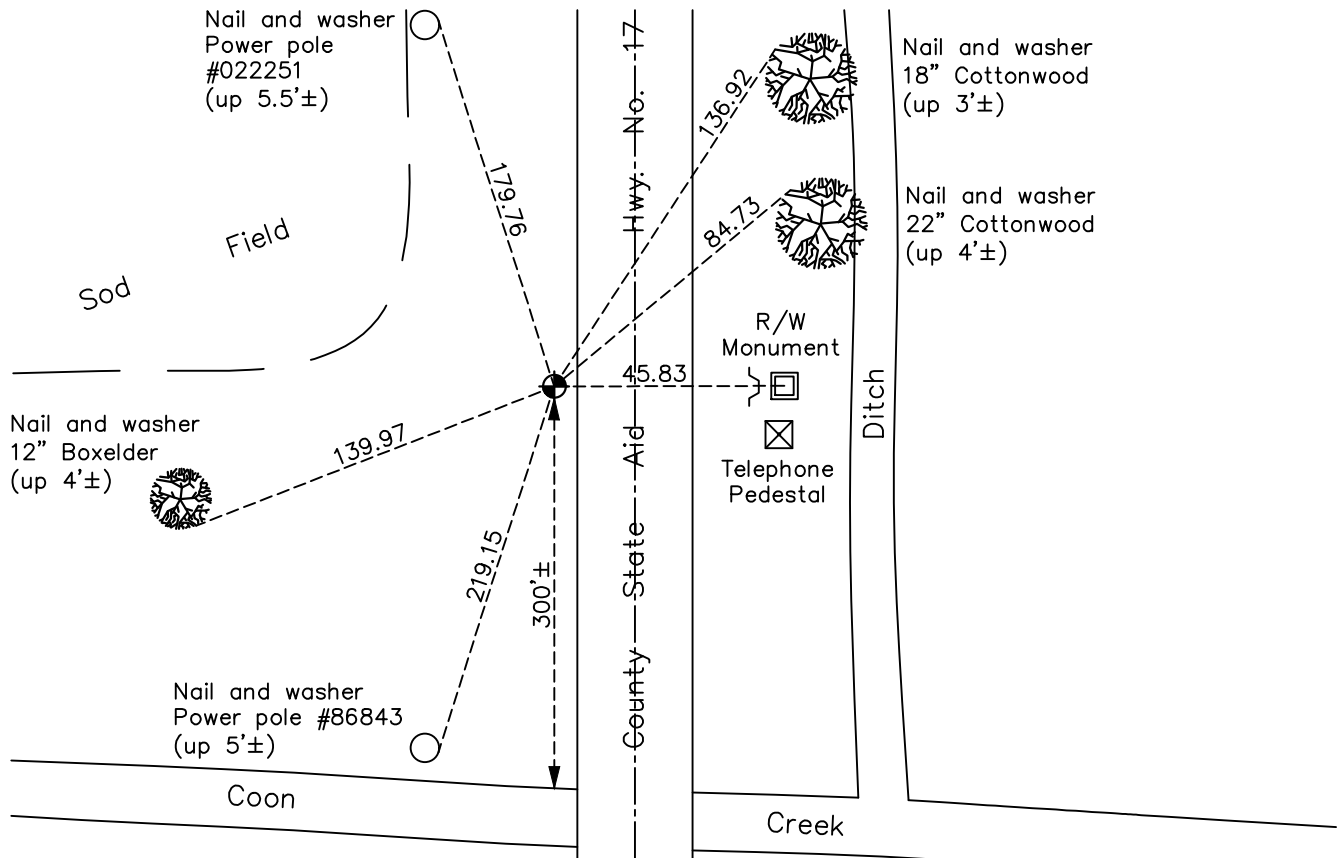
East 1/4 Corner of Sec. 26 Township 32 Range 23

On the 24th day of August, 1966, the described corner was evidenced by area resurvey

and to perpetuate the location of said corner, at the exact location thereof, a permanent marker was placed consisting of a cast iron monument down 0.5'± near edge of blacktop

AND on the 15th day of April, 2021, said permanent marker was found down 0.5'± and the ties were updated

Updated reference ties are as shown below.



Revision Date
7/26/2021

N.A.D. 1983 Coordinates
(1996 Adjustment)

County Project Coordinates	
Northing	<u>172076.6856</u>
Easting	<u>526705.6101</u>
Date	<u>12/13/01</u>

I hereby certify that this United States public land survey monument record is correct and complete to the best of my knowledge and belief.

David Zieglmeier Date 7/21/22

David Zieglmeier Anoka County Surveyor
Minnesota License Number 46179

HISTORY OF GOVERNMENT CORNER

Page No. 106

County of Anoka

State of Minnesota

East 1/4 Corner of Sec. 26 Township 32 Range 23

CORNER HISTORY:

February 1855 - This corner was established by Hiram Taylor, Deputy Surveyor. Taylor marked the position by "Set quarter section post" with one bearing tree marked as an accessory.

August 24, 1966 - Set cast iron monument using area resurvey. Established ties to monument.

May 25, 1971 - Found cast iron monument and updated ties.

July 22, 1975 - Reset cast iron monument flush near edge of blacktop road after loss of ties. Updated ties.

May 2, 1977 - Found cast iron monument and updated ties after ties taken out by ditch construction.

June 19, 1978 - Found cast iron monument and updated ties.

June 26, 1982 - Found cast iron monument and updated ties.

June 28, 1984 - Found cast iron monument and updated ties.

June 30, 1987 - Found cast iron monument and updated ties.

November 26, 1991 - Found cast iron monument and updated ties.

August 23, 1996 - Found cast iron monument and updated ties.

May 26, 1999 - Found cast iron monument down 0.5'± and updated ties.

December 13, 2001 - Found cast iron monument and updated ties. Established NAD 1983 (1996 adj.) Anoka County project coordinates by static GPS methods.

April 30, 2010 - Found cast iron monument down 0.5'± and updated ties.

April 18, 2011 - Found cast iron monument down 0.5'± and updated ties.

March 15, 2017 - Found cast iron monument down 0.5'±. Verified position by VRS GPS methods. Updated ties.

April 15, 2021 - Found cast iron monument down 0.5'± and updated ties.