

CERTIFICATE OF LOCATION OF GOVERNMENT CORNER

County of Anoka

State of Minnesota

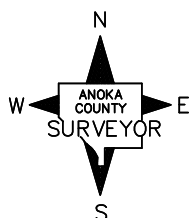
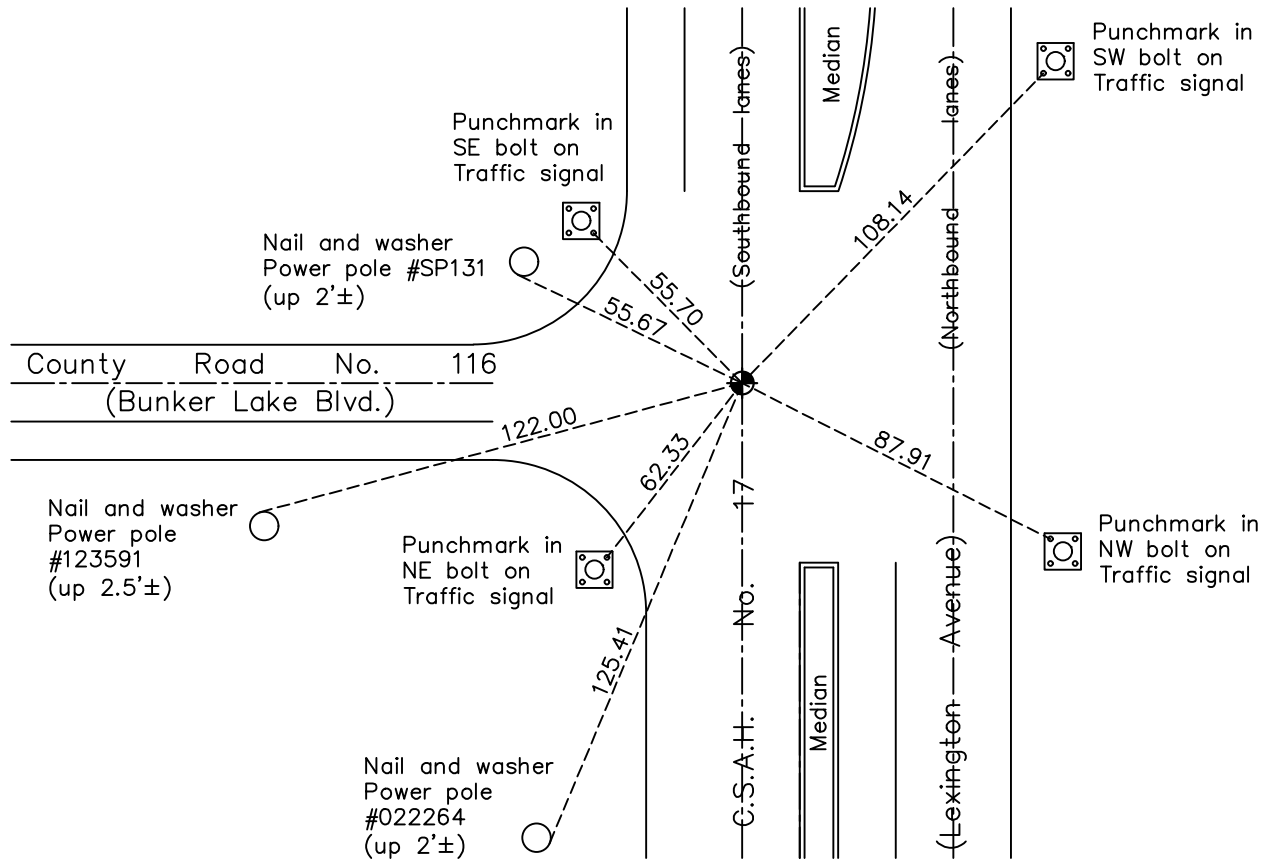
Southwest Corner of Sec. 25 Township 32 Range 23

On the 3rd day of August, 1964, the described corner was evidenced by a granite monument

and to perpetuate the location of said corner, at the exact location thereof, a permanent marker was placed consisting of a cast iron monument

AND on the 21st day of April, 2021, said permanent marker was found flush and the ties were updated

Updated reference ties are as shown below.



Revision Date
7/26/2021

N.A.D. 1983 Coordinates
(1996 Adjustment)

County Project Coordinates	
Northing	<u>169438.9728</u>
Easting	<u>526703.1197</u>
Date	<u>12/13/01</u>

I hereby certify that this United States public land survey monument record is correct and complete to the best of my knowledge and belief.

David Zieglmeier Date 7/21/22

David Zieglmeier Anoka County Surveyor
Minnesota License Number 46179

HISTORY OF GOVERNMENT CORNER

Page No. 110

County of Anoka

State of Minnesota

Southwest Corner of Sec. 25 Township 32 Range 23

CORNER HISTORY:

February 1855 - This corner was established by Hiram Taylor, Deputy Surveyor. Taylor marked the position by "Set post corner to sections 25, 26, 35 & 36" with two bearing trees marked as accessories.

November 22, 1961 - Found granite monument down 0.7'± and leaning 1'± south and 1'± east. Straightened and updated ties.

August 3, 1964 - Found granite monument down 17-1/2". Set shortened partial cast iron monument (no bottom) on top of granite. Updated ties.

August 3, 1966 - Found cast iron monument and updated ties.

May 25, 1971 - Found cast iron monument and updated ties.

June 13, 1975 - Found cast iron monument and updated ties.

June 19, 1978 - Found cast iron monument and updated ties.

June 29, 1981 - Found cast iron monument and updated ties.

June 28, 1984 - Found cast iron monument and updated ties.

June 30, 1987 - Found cast iron monument and updated ties.

November 26, 1991 - Found cast iron monument and updated ties.

August 5, 1996 - Found cast iron monument and updated ties.

May 26, 1999 - Found cast iron monument and updated ties.

December 13, 2001 - Found cast iron monument and updated ties. Established NAD 1983 (1996 adj.) Anoka County project coordinates by static GPS methods.

April 21, 2011 - Found cast iron monument down 0.2'± and updated ties.

May 14, 2012 - Found partial cast iron monument on top of granite monument down 2'±. Set construction ties, updated corner ties and checked position by VRS GPS methods of cast iron monument prior road construction. Removed cast iron monument.

October 25, 2013 - Set cast iron monument flush after road construction using static GPS methods. Verified position by VRS GPS methods. Updated ties.

March 13, 2017 - Found cast iron monument and updated ties.

April 21, 2021 - Found cast iron monument and the ties were updated. Verified position by VRS GPS method.