

CERTIFICATE OF LOCATION OF GOVERNMENT CORNER

County of Anoka

State of Minnesota

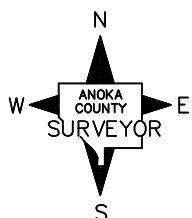
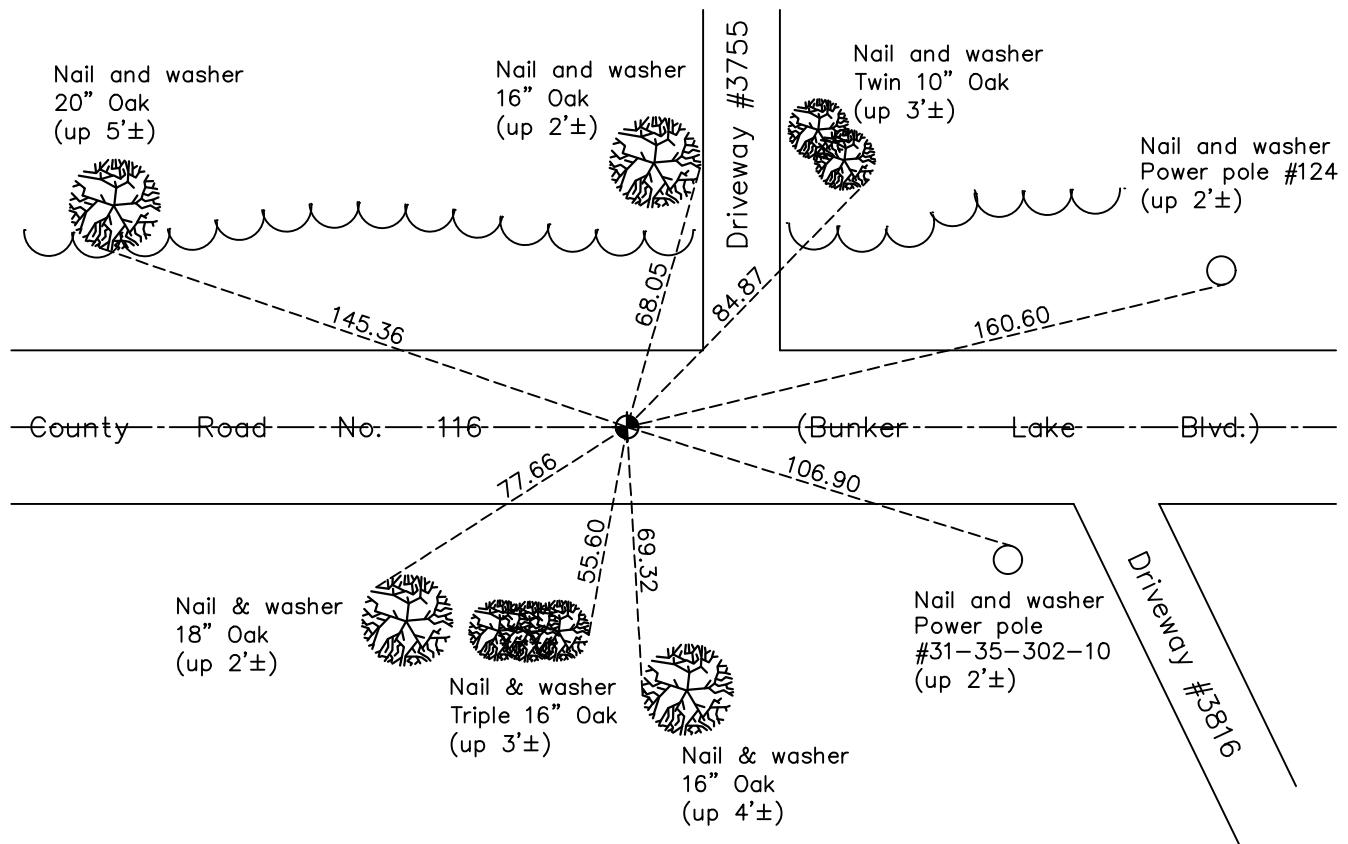
South 1/4 Corner of Sec. 26 Township 32 Range 23

On the 23rd day of August, 1966, the described corner was evidenced by a granite monument

and to perpetuate the location of said corner, at the exact location thereof, a permanent marker was placed consisting of a cast iron monument

AND on the 21st day of April, 2021, said permanent marker was found down 0.2'± and the ties were updated

Updated reference ties are as shown below.



Revision Date
7/26/2021

N.A.D. 1983 Coordinates
(1996 Adjustment)

County Project Coordinates	
Northing	<u>169454.8056</u>
Easting	<u>524099.0650</u>
Date	<u>12/13/01</u>

I hereby certify that this United States public land survey monument record is correct and complete to the best of my knowledge and belief.

David Zieglmeier Date 7/21/22

David Zieglmeier Anoka County Surveyor
Minnesota License Number 46179

HISTORY OF GOVERNMENT CORNER

Page No. 111

County of Anoka

State of Minnesota

South 1/4 Corner of Sec. 26 Township 32 Range 23

CORNER HISTORY:

February 1855 - This corner was established by Hiram Taylor, Deputy Surveyor. Taylor marked the position by "Set quarter section post" with two bearing trees marked as accessories.

August 23, 1966 - Found granite monument down 15"± using area resurvey. Set cast iron monument flush with the surface on top of granite. Updated ties.

May 25, 1971 - Found cast iron monument and updated ties.

June 13, 1975 - Found cast iron monument and updated ties.

June 19, 1978 - Found cast iron monument and updated ties.

June 28, 1984 - Found cast iron monument and updated ties.

June 30, 1987 - Found cast iron monument and updated ties.

January 29, 1991 - Found cast iron monument and updated ties.

November 26, 1991 - Found cast iron monument and updated ties.

August 5, 1996 - Found cast iron monument and updated ties.

December 13, 2001 - Found cast iron monument and updated ties. Established NAD 1983 (1996 adj.) Anoka County project coordinates by static GPS methods.

April 18, 2011 - Found cast iron monument and updated ties.

March 13, 2017 - Found cast iron monument down 0.2'± and updated ties.

April 21, 2021 - Found cast iron monument down 0.2'± and updated ties. Verified position by VRS GPS method.