

CERTIFICATE OF LOCATION OF GOVERNMENT CORNER

County of Anoka

State of Minnesota

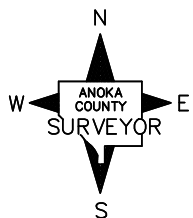
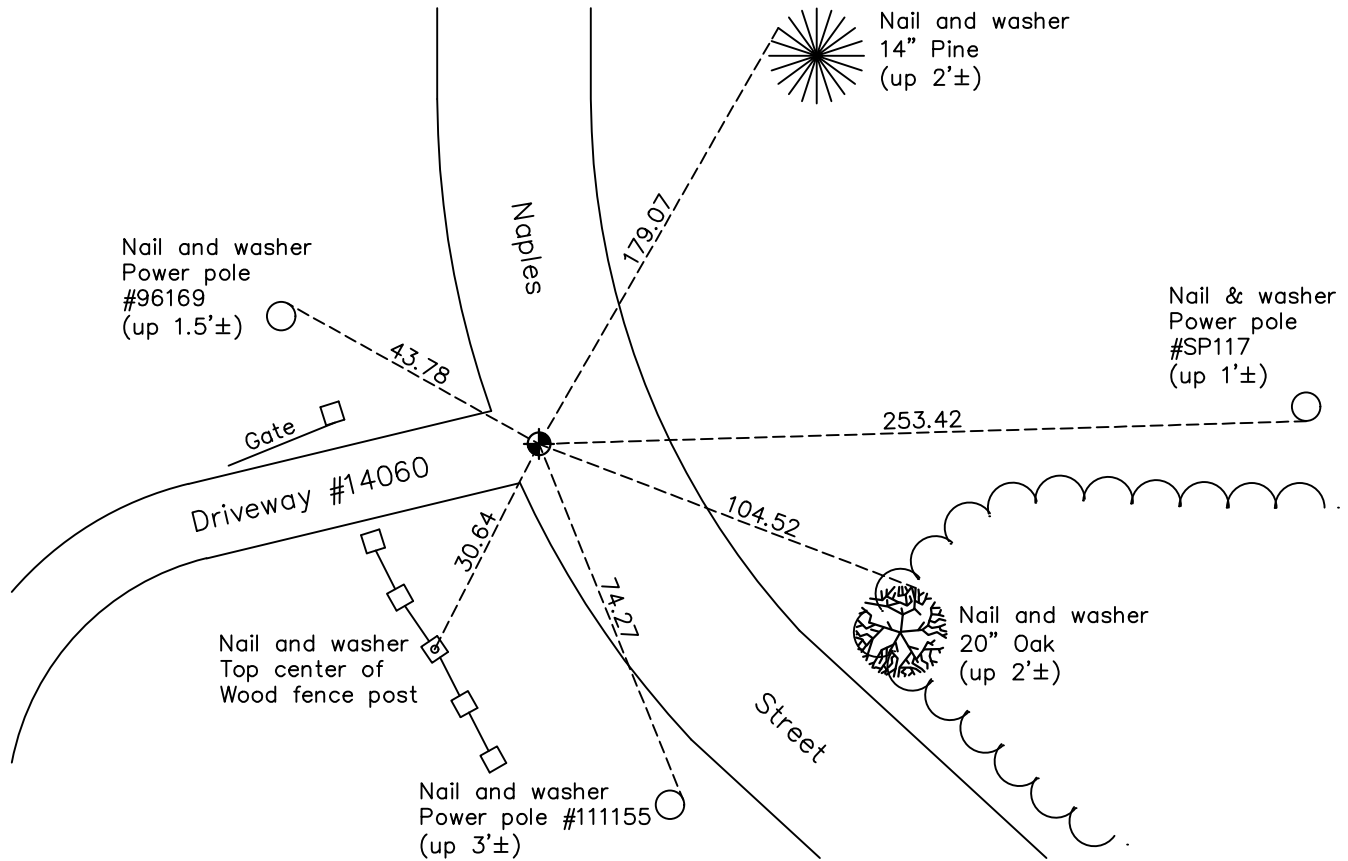
Northwest Corner of Sec. 35 Township 32 Range 23

On the 17th day of July, 1964, the described corner was evidenced by a 6"X6" granite monument

and to perpetuate the location of said corner, at the exact location thereof, a permanent marker was placed consisting of a slim cast iron monument set on top of a granite monument

AND on the 6th day of April, 2021, said permanent marker was found flush and the ties were updated. (0.7' east of face of curb at driveway)

Updated reference ties are as shown below.



Revision Date
7/26/2021

N.A.D. 1983 Coordinates
(1996 Adjustment)

County Project Coordinates	
Northing	<u>169470.6937</u>
Easting	<u>521526.9375</u>
Date	<u>11/30/01</u>

I hereby certify that this United States public land survey monument record is correct and complete to the best of my knowledge and belief.

David Zieglmeier Date 7/21/22

David Zieglmeier Anoka County Surveyor
Minnesota License Number 46179

HISTORY OF GOVERNMENT CORNER

Page No. 112

County of Anoka

State of Minnesota

Northwest Corner of Sec. 35 Township 32 Range 23

CORNER HISTORY:

February 1855 - This corner was established by Hiram Taylor, Deputy Surveyor. Taylor marked the position by "Set post corner to sections 26, 27, 34 & 35" with two bearing trees marked as accessories.

April 9, 1959 - Found granite monument with "X" chiseled in top. Lowered 1' and set iron pipe on the north side. Updated ties.

July 17, 1964 - Found 6" x 6" granite monument down 3'± using 1 remaining tie. Set cast iron monument flush with the blacktop road on top of the granite. Updated ties.

August 3, 1966 - Found cast iron monument and updated ties.

August 5, 1969 - Found cast iron monument and updated ties.

May 5, 1971 - Found cast iron monument and updated ties.

June 13, 1975 - Found cast iron monument and updated ties.

June 19, 1978 - Found cast iron monument and updated ties.

June 29, 1981 - Found cast iron monument and updated ties.

June 23, 1984 - Found cast iron monument and updated ties.

June 29, 1987 - Found cast iron monument and updated ties.

November 26, 1991 - Found cast iron monument and updated ties.

August 2, 1996 - Found cast iron monument and updated ties.

May 4, 1999 - Found cast iron monument and set construction ties prior to construction. Removed monument. Set cast iron monument after construction and updated ties.

November 30, 2001 - Established NAD 1983 (1996 adj.) Anoka County project coordinates by static GPS methods.

March 21, 2011 - Found cast iron monument and updated ties.

February 7, 2017 - Found cast iron monument broken. Checked ties to center fin.

June 20, 2017 - Set short slim cast iron monument flush with the blacktop on top of the granite using static GPS methods. Verified position by VRS GPS methods. Updated ties.

April 6, 2021 - Found a slim cast iron monument and updated ties.