

CERTIFICATE OF LOCATION OF GOVERNMENT CORNER

County of Anoka

State of Minnesota

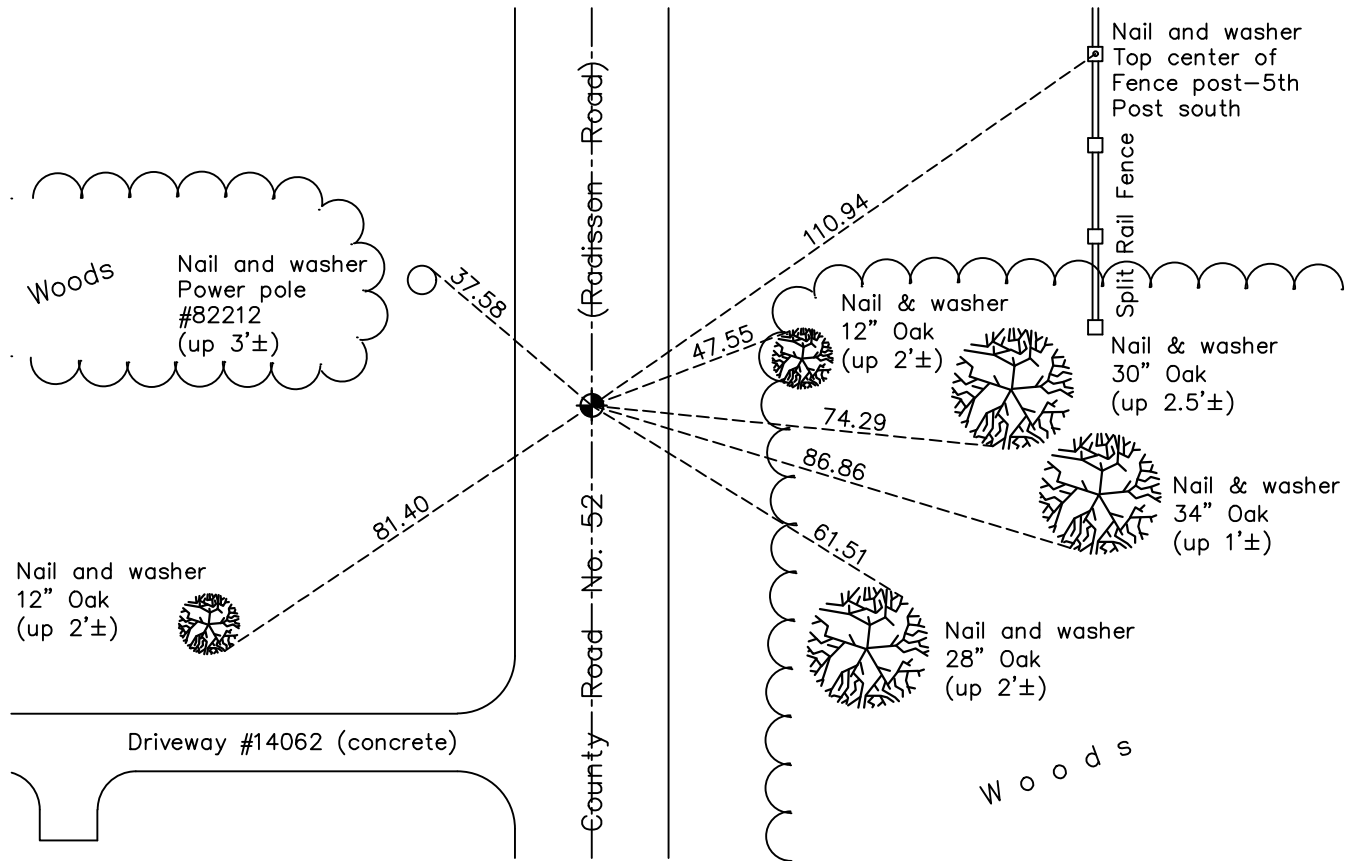
North 1/4 Corner of Sec. 33 Township 32 Range 23

On the 6th day of July, 1960, the described corner was evidenced by an iron bar
over a granite monument

and to perpetuate the location of said corner, at the exact location thereof, a permanent marker
was placed consisting of a cast iron monument

AND on the 7th day of April, 2021, said permanent marker was found flush and the
ties were updated

Updated reference ties are as shown below.



Revision Date
7/27/2021

N.A.D. 1983 Coordinates
 (1996 Adjustment)

County Project Coordinates	
Northing	<u>169565.9412</u>
Easting	<u>513499.6319</u>
Date	<u>12/13/01</u>

I hereby certify that this United States public land survey monument record is correct and complete to the best of my knowledge and belief.
David Zieglmeier Date 7/21/22
 David Zieglmeier Anoka County Surveyor
 Minnesota License Number 46179

HISTORY OF GOVERNMENT CORNER

Page No. 115

County of Anoka

State of Minnesota

North 1/4 Corner of Sec. 33 Township 32 Range 23

CORNER HISTORY:

February 1855 - This corner was established by Hiram Taylor, Deputy Surveyor. Taylor marked the position by "Set quarter section post" with one bearing tree marked as an accessory.

August 31, 1955 - Jackson set an iron and established ties to the iron.

July 20, 1959 - Anoka County highway department found an iron and updated the ties.

July 6, 1960 - Found solid iron down 1'± and updated ties.

June 7, 1962 - Found solid iron down 1'± and dug down 5' in search of granite monument. Supposed granite monument not found. Replaced solid iron with a cast iron monument flush. Updated ties to cast iron monument.

July 20, 1964 - Found cast iron monument and updated ties.

August 3, 1966 - Found cast iron monument and updated ties.

May 10, 1971 - Found cast iron monument and updated ties.

June 16, 1975 - Found cast iron monument and updated ties.

June 20, 1978 - Found cast iron monument and updated ties.

July 2, 1984 - Found cast iron monument and updated ties.

June 30, 1987 - Found cast iron monument and updated ties.

November 20, 1991 - Found cast iron monument and updated ties.

July 31, 1996 - Found cast iron monument and updated ties.

December 13, 2001 - Found cast iron monument and updated ties. Established NAD 1983 (1996 adj.) Anoka County project coordinates by static GPS methods.

March 2, 2011 - Found cast iron monument and updated ties.

July 28, 2014 - Found cast iron monument, set construction ties and updated corner ties prior to road construction. Removed monument.

October 28, 2014 - Set cast iron monument flush after construction using static GPS methods. Verified position by VRS GPS methods. Updated ties.

February 7, 2017 - Found cast iron monument. Verified position by VRS GPS methods. Updated ties.

April 7, 2021 - Found cast iron monument flush. Verified position by VRS GPS methods. Updated ties.