

CERTIFICATE OF LOCATION OF GOVERNMENT CORNER

County of Anoka

State of Minnesota

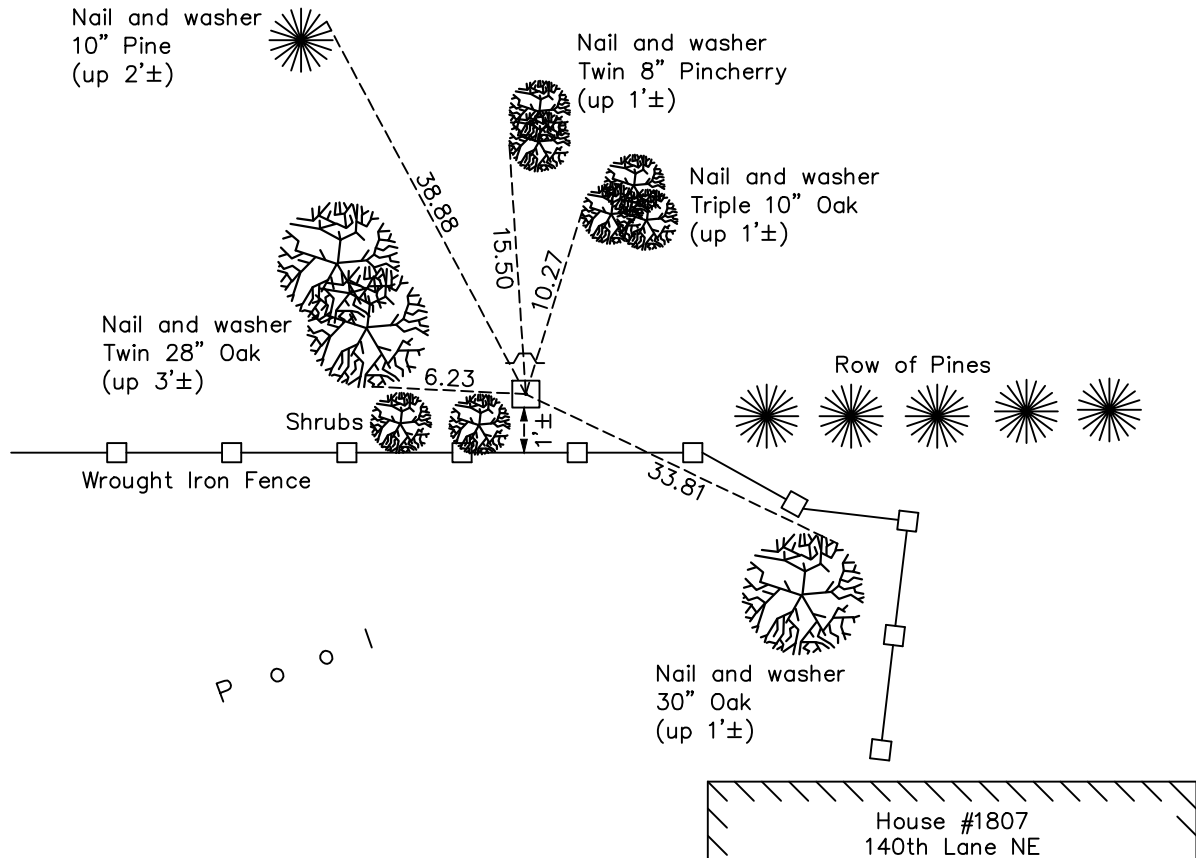
Southwest Corner of Sec. 28 Township 32 Range 23

On the 26th day of May, 1966, the described corner was evidenced by a granite monument

and to perpetuate the location of said corner, at the exact location thereof, a permanent marker was placed consisting of the same granite monument with a sign and post on the north side

AND on the 7th day of April, 2021, said permanent marker was found down 0.5'± and the ties were updated

Updated reference ties are as shown below.



Revision Date

7/27/2021

N.A.D. 1983 Coordinates
(1996 Adjustment)

County Project Coordinates	
Northing	<u>169609.7617</u>
Easting	<u>510820.7119</u>
Date	<u>12/12/01</u>

I hereby certify that this United States public land survey monument record is correct and complete to the best of my knowledge and belief.

David Zieglmeier Date 7/21/22

David Zieglmeier Anoka County Surveyor
Minnesota License Number 46179

HISTORY OF GOVERNMENT CORNER

Page No. 116

County of Anoka

State of Minnesota

Southwest Corner of Sec. 28 Township 32 Range 23

CORNER HISTORY:

February 1855 - This corner was established by Hiram Taylor, Deputy Surveyor. Taylor marked the position by "Set post corner to sections 28, 29, 32 & 33" with two bearing trees marked as accessories.

May 26, 1966 - Found granite monument up 0.2'± with a 1/2" iron pipe on the north side. Updated ties.

June 23, 1971 - Found granite monument flush with a 1/2" iron pipe on the north side. Updated ties.

June 20, 1975 - Found granite monument and updated ties.

June 20, 1978 - Found granite monument and updated ties.

June 27, 1984 - Found granite monument and updated ties.

June 16, 1992 - Found granite monument with sign and post on the north side. Updated ties.

August 21, 1996 - Found granite monument and updated ties.

December 12, 2001 - Found granite monument and updated ties. Established NAD 1983 (1996 adj.) Anoka County project coordinates by static GPS methods.

March 8, 2011 - Found granite monument down 0.5'± and updated ties.

January 6, 2017 - Found granite monument down 0.5'± and updated ties.

April 7, 2021 - Found granite monument down 0.5'± and updated ties.