

CERTIFICATE OF LOCATION OF GOVERNMENT CORNER

County of Anoka

State of Minnesota

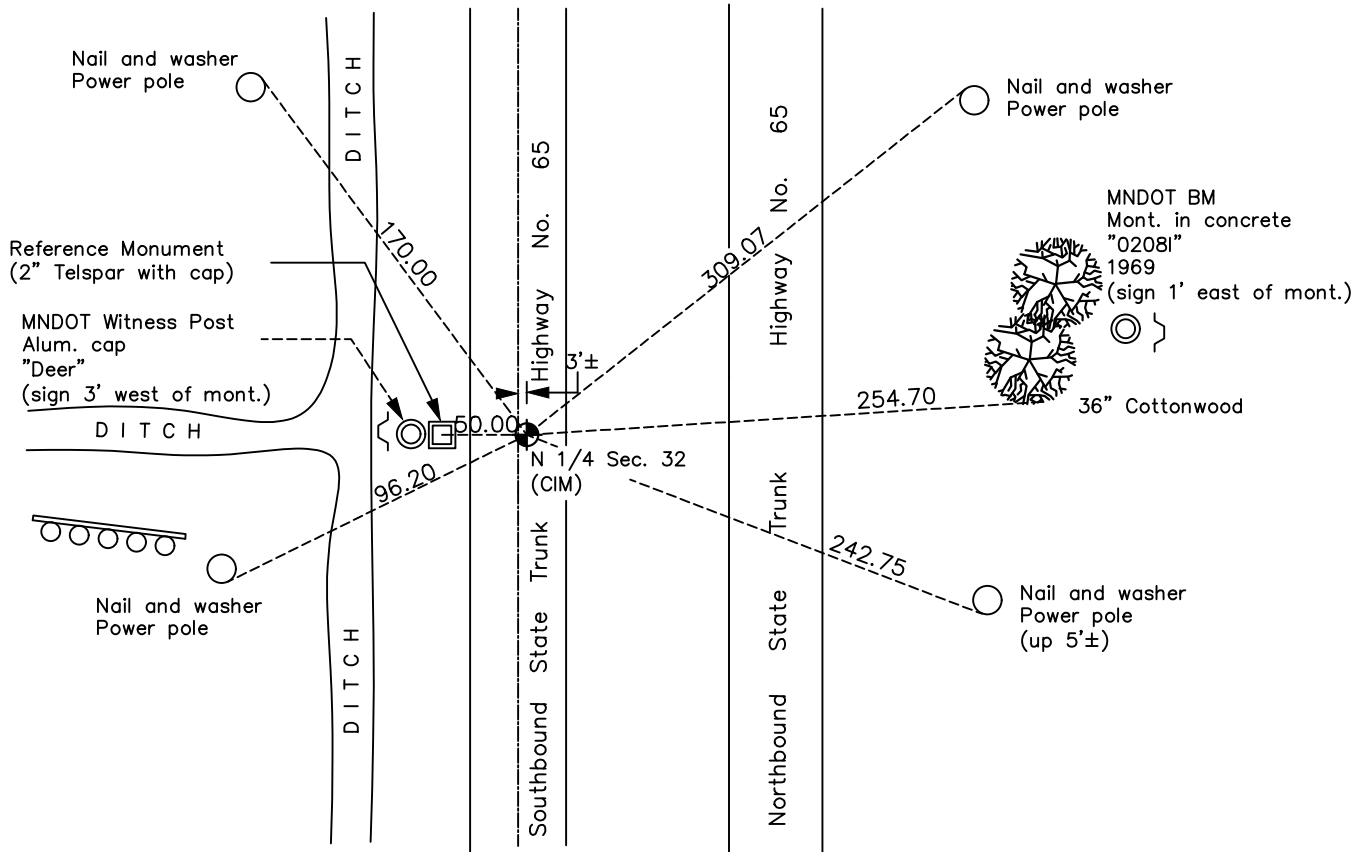
North 1/4 Corner of Sec. 32 Township 32 Range 23

On the 9th day of September, 1969, the described corner was evidenced by a P.K. nail

and to perpetuate the location of said corner, at the exact location thereof, a permanent marker was placed consisting of a cast iron monument

AND on the 13th day of June, 2023, said permanent marker was found cast iron monument below road surface. Reference monument (index #1626) set 50' westerly and established ties.

Updated reference ties are as shown below.



Revision Date

7/31/2023

N.A.D. 1983 Coordinates
(1996 Adjustment)

County Project Coordinates	
Northing	<u>169579.7477</u>
Easting	<u>508168.1655</u>
Date	<u>8/28/06</u>

I hereby certify that this United States public land survey monument record is correct and complete to the best of my knowledge and belief.

David Zieglmeier Date 12/11/23

David Zieglmeier Anoka County Surveyor
Minnesota License Number 46179

REFERENCE MONUMENT FOR GOVERNMENT CORNER

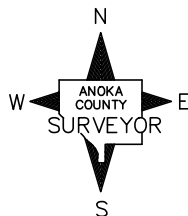
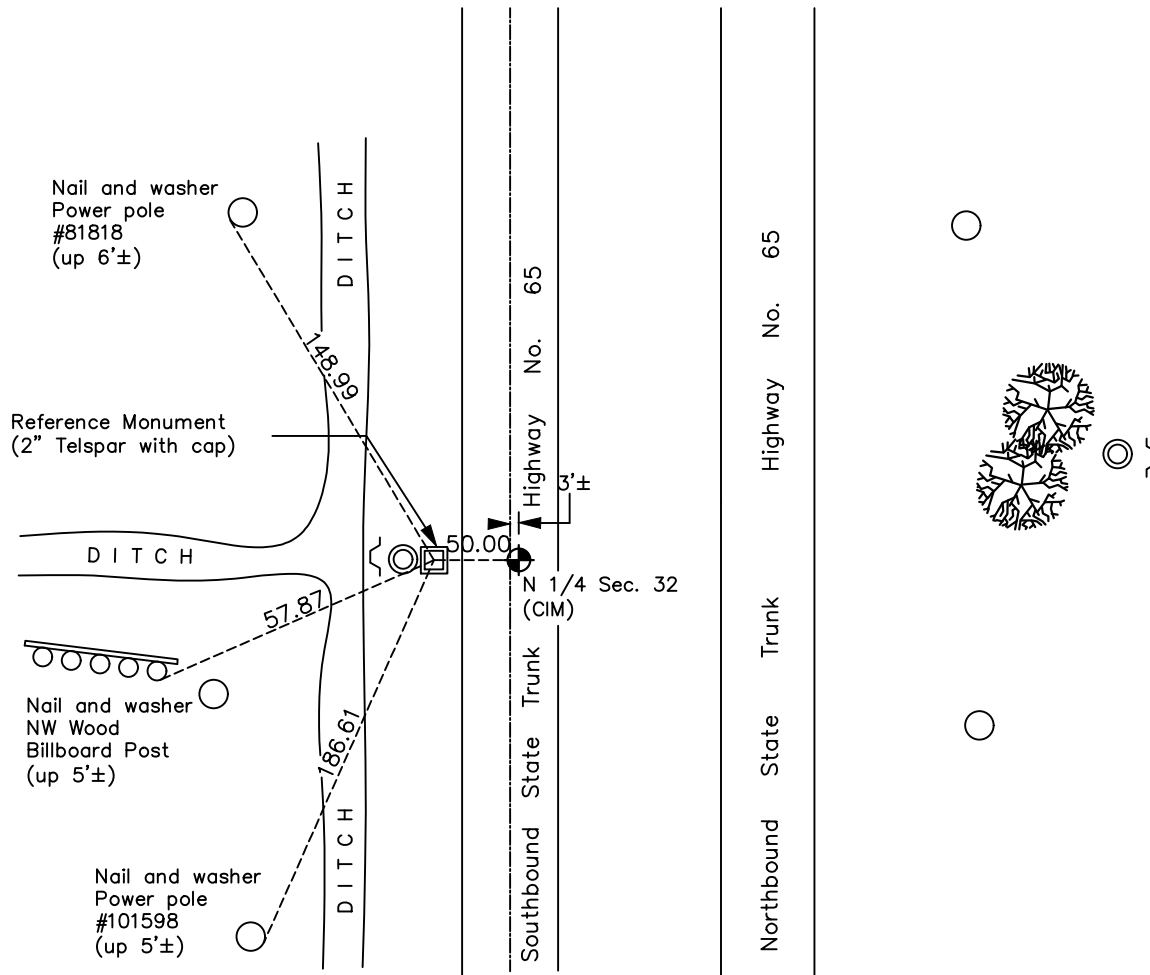
Reference to County of Anoka State of Minnesota

North 1/4 Corner of Sec. 32 Township 32 Range 23

On the 13th day of June, 2023, the described reference monument was evidenced by a computed position 50' westerly along the section line and to reference the location of said corner, at the exact location thereof, a permanent marker was placed consisting of a 2" square steel Telspar with aluminum cap and punch mark left up 0.2'±

AND on the 13th day of June, 2023, said permanent marker was set flush using RTK GPS method and ties were established to the reference monument

Updated reference ties are as shown below.



Revision Date
7/31/2023

REFERENCE MONUMENT
 N.A.D. 1983 (2011 Adj.)

County Project Coordinates	
Northing	<u>169580.1559</u>
Easting	<u>508118.1672</u>
Date	<u>6/13/2023</u>

HISTORY OF GOVERNMENT CORNER

Page No. 117

County of Anoka

State of Minnesota

North 1/4 Corner of Sec. 32 Township 32 Range 23

CORNER HISTORY:

February 1855 - This corner was established by Hiram Taylor, Deputy Surveyor. Taylor marked the position by "Set quarter section post" with one bearing tree marked as an accessory.

January 12, 1945 - Harvey C. Cartwright found a cross in the pavement using highway notes. Updated the ties.

May 8, 1963 - Found hub and tack in place under 8" of blacktop. Set cast iron monument flush in place of highway department P.I. which is also the section corner. Updated ties.

August 9, 1966 - Found cast iron monument and updated ties.

August 26, 1969 - Found cast iron monument down and raised flush. Updated ties.

August 21, 1975 - Found cast iron monument down and raised flush. Updated ties.

June 29, 1978 - Found cast iron monument and updated ties.

July 20, 1981 - Found cast iron monument and updated ties.

July 11, 1984 - Found cast iron monument and updated ties.

October 24, 1990 - Found cast iron monument and updated ties.

August 13, 1996 - Found cast iron monument down 0.4'± and updated ties.

August 28, 2006 - Found cast iron monument and updated ties. Established NAD 1983 (1996 adj.) Anoka County project coordinates by static GPS methods.

June 13, 2023 - Found cast iron monument flush. Set **reference monument** to a computed position 50' westerly along the section line using RTK GPS method consisting of a 2" square steel Telspar with an aluminum cap and punch mark, set up 0.2'±. Established ties to the **reference monument**.