

# CERTIFICATE OF LOCATION OF GOVERNMENT CORNER

County of Anoka

State of Minnesota

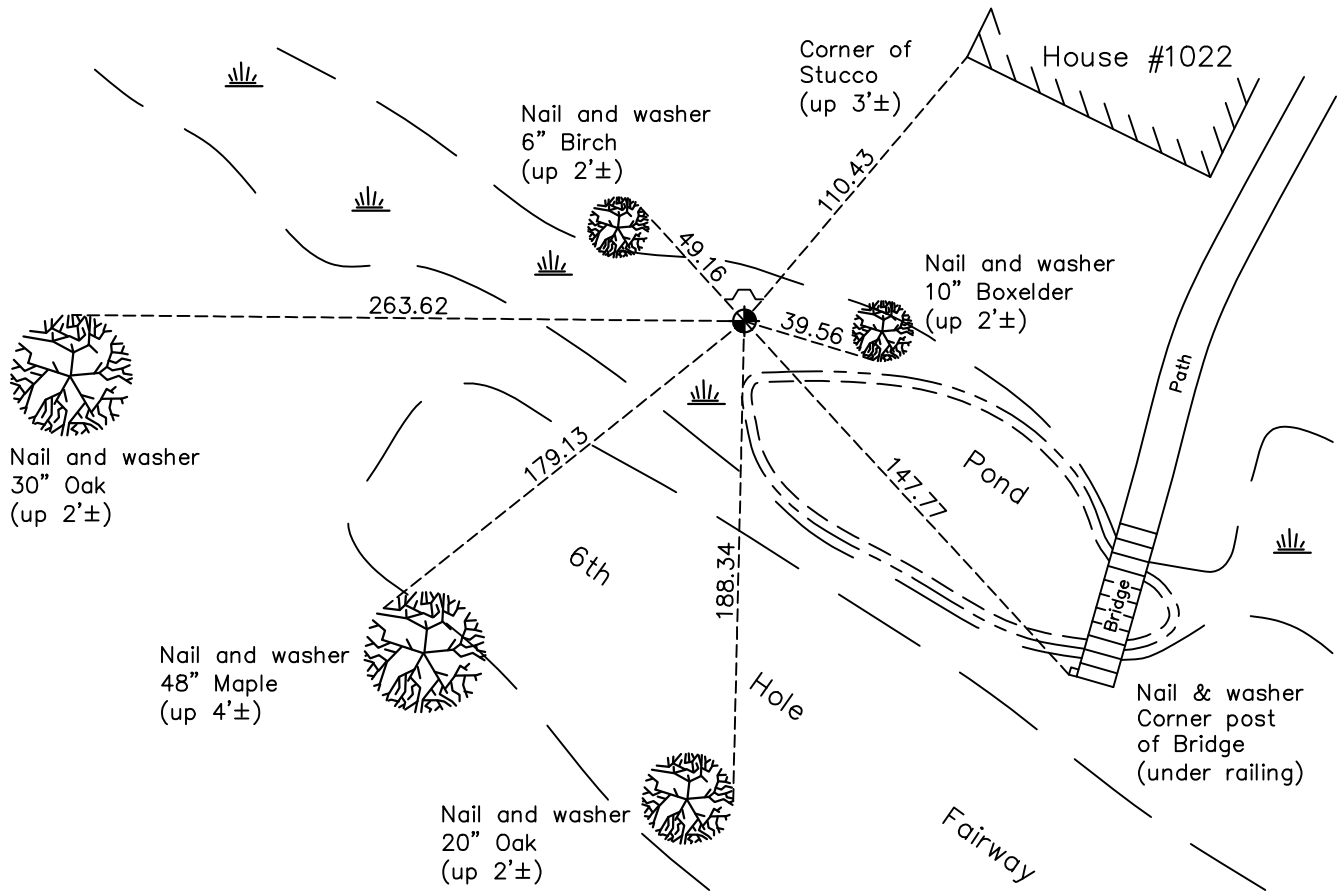
## Southeast Corner of Sec. 30 Township 32 Range 23

On the 15th day of September, 1960, the described corner was evidenced by an iron pipe

and to perpetuate the location of said corner, at the exact location thereof, a permanent marker was placed consisting of a cast iron monument with a sign and post on the north side

AND on the 14th day of April, 2021, said permanent marker was found down 0.3'± and the ties were updated

Updated reference ties are as shown below.



Revision Date  
7/27/2021

N.A.D. 1983 Coordinates  
(1996 Adjustment)

County Project Coordinates	
Northing	<u>169601.3299</u>
Easting	<u>505524.8464</u>
Date	<u>12/20/01</u>

I hereby certify that this United States public land survey monument record is correct and complete to the best of my knowledge and belief.

*David Zieglmeier* Date 7/21/22

David Zieglmeier Anoka County Surveyor  
Minnesota License Number 46179

# HISTORY OF GOVERNMENT CORNER

Page No. 118

County of Anoka

State of Minnesota

## Southeast Corner of Sec. 30 Township 32 Range 23

### **CORNER HISTORY:**

February 1855 - This corner was established by Hiram Taylor, Deputy Surveyor. Taylor marked the position by "Set post corner to sections 29, 30, 31 & 32" with three bearing trees marked as accessories.

September 15, 1960 - Found pinched iron pipe up 0.1'± and replaced with a cast iron monument flush. Updated ties.

July 22, 1964 - Found cast iron monument and updated ties.

August 10, 1966 - Found cast iron monument and updated ties.

June 11, 1971 - Found cast iron monument flush and updated ties. Set sign and post on south side.

June 20, 1975 - Found cast iron monument and updated ties.

June 20, 1978 - Found cast iron monument and updated ties.

June 27, 1984 - Found cast iron monument and updated ties.

June 10, 1986 - Found cast iron monument leaning due to railroad tie fence post pushing on monument. Straightened monument and updated ties. Set sign and post on the north side and steel post on the south side.

June 25, 1987 - Found cast iron monument and updated ties.

June 12, 1992 - Found cast iron monument and updated ties.

August 7, 1996 - Found cast iron monument and updated ties.

December 20, 2001 - Found cast iron monument and updated ties. Established NAD 1983 (1996 adj.) Anoka County project coordinates by static GPS methods.

April 21, 2011 - Found cast iron monument and updated ties.

January 6, 2017 - Found cast iron monument down 0.3'±. Verified position by VRS GPS methods. Updated ties.

April 14, 2021 - Found cast iron monument down 0.3'±. Verified position by VRS GPS methods. Updated ties.