

CERTIFICATE OF LOCATION OF GOVERNMENT CORNER

County of Anoka

State of Minnesota

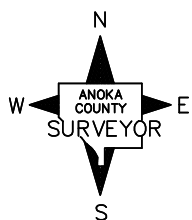
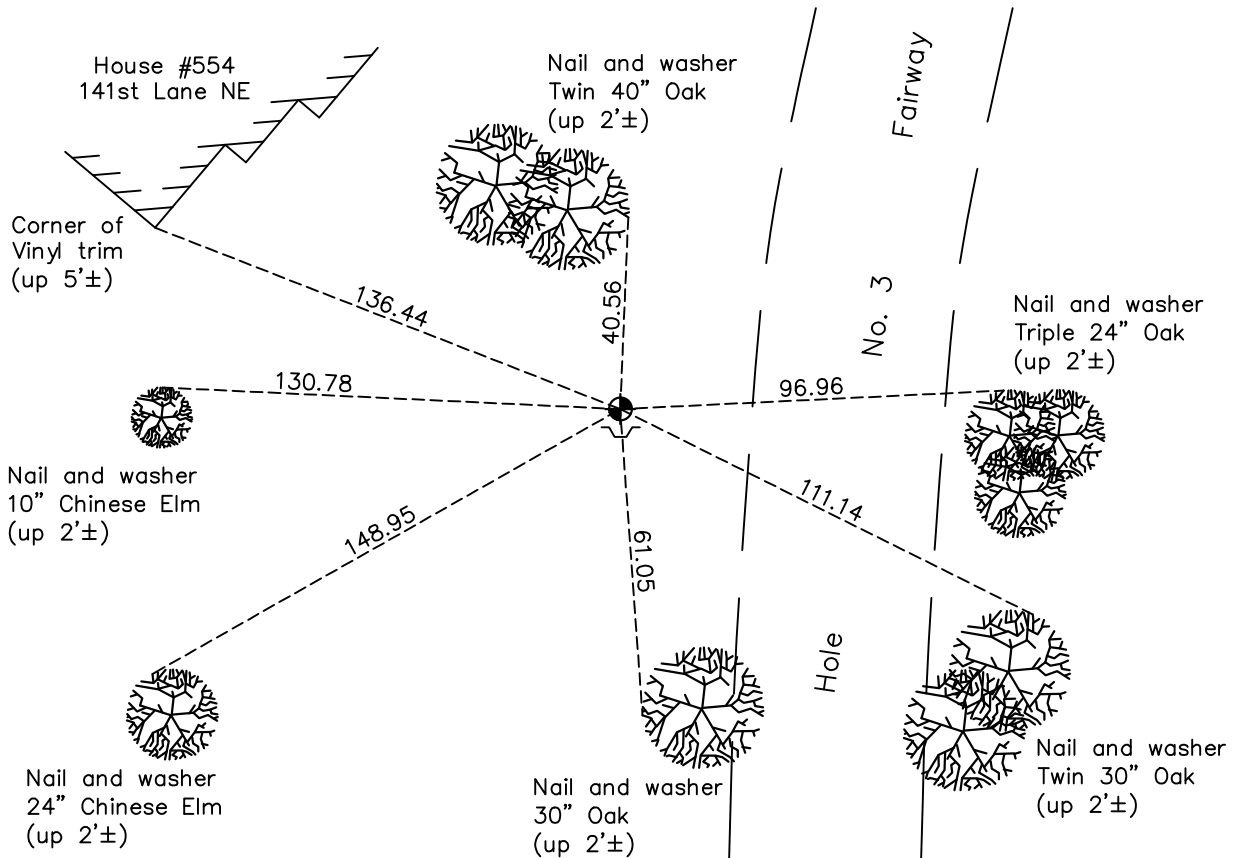
South 1/4 Corner of Sec. 30 Township 32 Range 23

On the 13th day of September, 1960, the described corner was evidenced by a concrete monument

and to perpetuate the location of said corner, at the exact location thereof, a permanent marker was placed consisting of a cast iron monument over the concrete monument (laying flat) with a sign and post on the south side

AND on the 14th day of April, 2021, said permanent marker was found down 0.3'± and the ties were updated

Updated reference ties are as shown below.



Revision Date

7/27/2021

N.A.D. 1983 Coordinates
(1996 Adjustment)

County Project Coordinates	
Northing	<u>169623.1580</u>
Easting	<u>502871.3752</u>
Date	<u>12/20/01</u>

I hereby certify that this United States public land survey monument record is correct and complete to the best of my knowledge and belief.

David Zieglmeier Date 7/21/22

David Zieglmeier Anoka County Surveyor
Minnesota License Number 46179

HISTORY OF GOVERNMENT CORNER

Page No. 119

County of Anoka

State of Minnesota

South 1/4 Corner of Sec. 30 Township 32 Range 23

CORNER HISTORY:

February 1855 - This corner was established by Hiram Taylor, Deputy Surveyor. Taylor marked the position by "Set quarter section post" with two bearing trees marked as accessories.

October 27, 1943 - Harvey C. Cartwright found an iron stake and hub at the fence corner. Replaced with a concrete monument and updated the ties.

September 13, 1960 - Found concrete monument flush with an iron pipe on the north side. Updated ties.

July 23, 1964 - Found concrete monument and updated ties.

August 10, 1966 - Found concrete monument and updated ties.

June 10, 1971 - Found concrete monument down 0.2'± and updated ties.

June 20, 1975 - Replaced concrete monument with a cast iron monument flush and updated ties.

June 20, 1978 - Found cast iron monument and updated ties.

July 10, 1984 - Found cast iron monument and updated ties.

June 12, 1992 - Found cast iron monument and updated ties.

August 7, 1996 - Found cast iron monument and updated ties.

December 20, 2001 - Established NAD 1983 (1996 adj.) Anoka County project coordinates by static GPS methods.

April 20, 2011 - Found cast iron monument broken and checked ties to center fin of broken monument.

April 25, 2011 - Found broken cast iron monument and checked position by static GPS methods.

May 17, 2011 - Removed broken monument and found concrete monument underneath laying flat. Set new cast iron monument using static GPS methods. Verified position by VRS GPS methods. Updated ties. Set sign and post on the south side.

January 6, 2017 - Found cast iron monument down 0.3'±. Verified position by VRS GPS methods. Updated ties.

April 14, 2021 - Found cast iron monument down 0.3'±. Verified position by VRS GPS methods. Updated ties.