

# CERTIFICATE OF LOCATION OF GOVERNMENT CORNER

County of Anoka

State of Minnesota

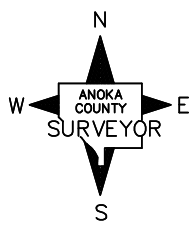
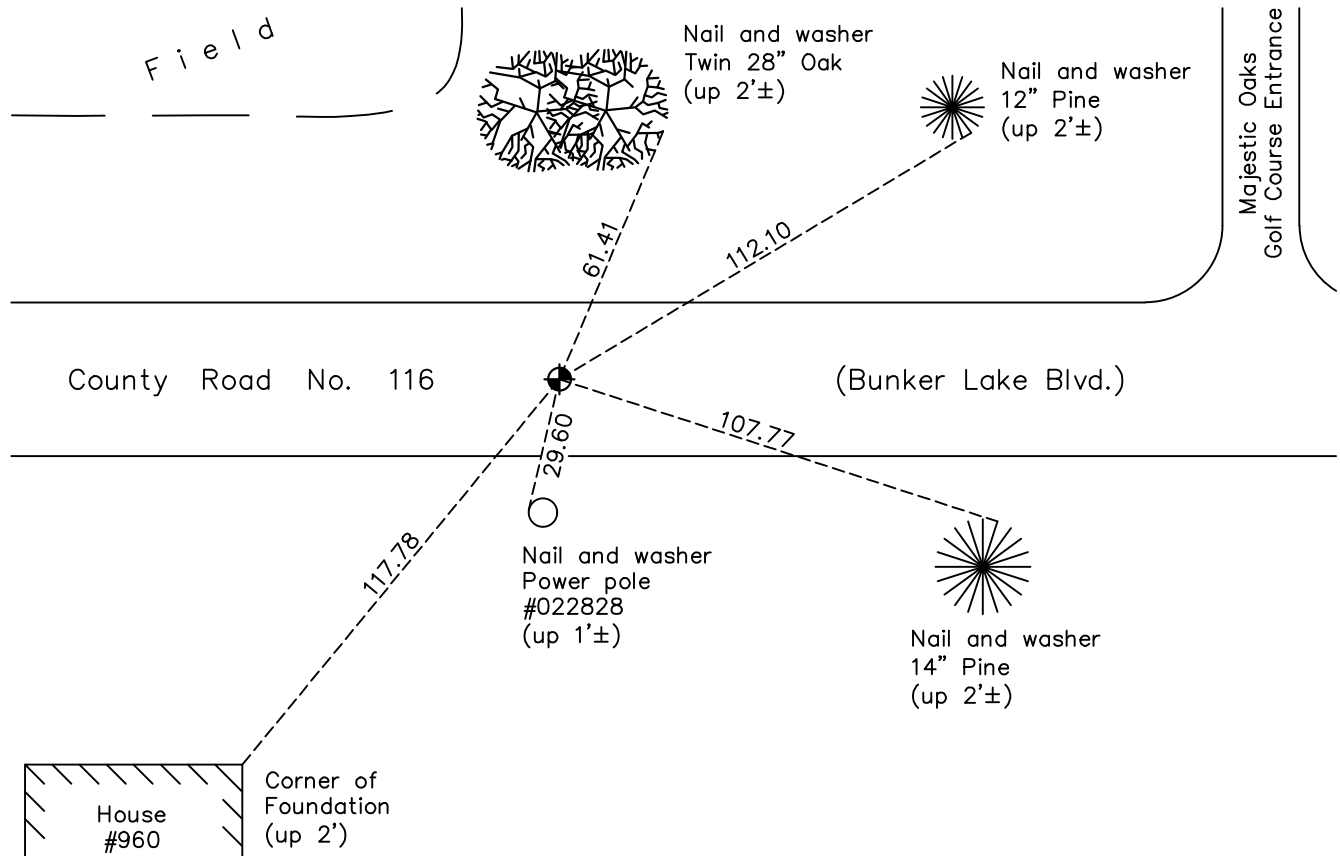
## East 1/4 Corner of Sec. 31 Township 32 Range 23

On the 12th day of September, 1960, the described corner was evidenced by an iron pipe

and to perpetuate the location of said corner, at the exact location thereof, a permanent marker was placed consisting of a cast iron monument

AND on the 14th day of April, 2021, said permanent marker was found and the ties were updated

Updated reference ties are as shown below.



Revision Date  
7/27/2021

N.A.D. 1983 Coordinates  
 (1996 Adjustment)

County Project Coordinates	
Northing	<u>166948.1919</u>
Easting	<u>505585.1423</u>
Date	<u>12/20/01</u>

I hereby certify that this United States public land survey monument record is correct and complete to the best of my knowledge and belief.

*David Zieglmeier* Date 7/21/22

David Zieglmeier Anoka County Surveyor  
 Minnesota License Number 46179

# HISTORY OF GOVERNMENT CORNER

Page No. 122

County of Anoka

State of Minnesota

## East 1/4 Corner of Sec. 31 Township 32 Range 23

### **CORNER HISTORY:**

February 1855 - This corner was established by Hiram Taylor, Deputy Surveyor. Taylor marked the position by "Set quarter section post" with two bearing trees marked as accessories.

December 30, 1959 - Berscheid found a pinched iron pipe and updated the ties.

September 12, 1960 - Found iron pipe flush and replaced with a cast iron monument down 3". Updated ties.

April 17, 1962 - Removed cast iron monument due to road construction and set a 3/4" iron pipe. Updated ties.

April 17, 1963 - Set 1/2" iron pipe after construction using ties. Updated ties.

June 9, 1964 - Replaced 1/2" iron pipe with cast iron monument. Set P.K. nails 2' north and east.

July 22, 1964 - Found cast iron monument and updated ties.

August 5, 1966 - Found cast iron monument and updated ties.

May 20, 1971 - Found cast iron monument and updated ties.

June 13, 1975 - Found cast iron monument and updated ties.

June 20, 1978 - Found cast iron monument and updated ties.

June 29, 1984 - Found cast iron monument and updated ties.

June 30, 1987 - Found cast iron monument and updated ties.

October 20, 1991 - Found cast iron monument and updated ties.

August 6, 1996 - Found cast iron monument and updated ties.

August 31, 1999 - Found cast iron monument down. Raised flush and updated ties.

December 20, 2001 - Established NAD 1983 (1996 adj.) Anoka County project coordinates by static GPS methods.

March 29, 2011 - Found cast iron monument and updated ties.

February 6, 2017 - Found cast iron monument. Verified position by VRS GPS methods. Updated ties.

April 14, 2021 - Found cast iron monument. Verified position by VRS GPS methods. Updated ties.