

CERTIFICATE OF LOCATION OF GOVERNMENT CORNER

County of Anoka

State of Minnesota

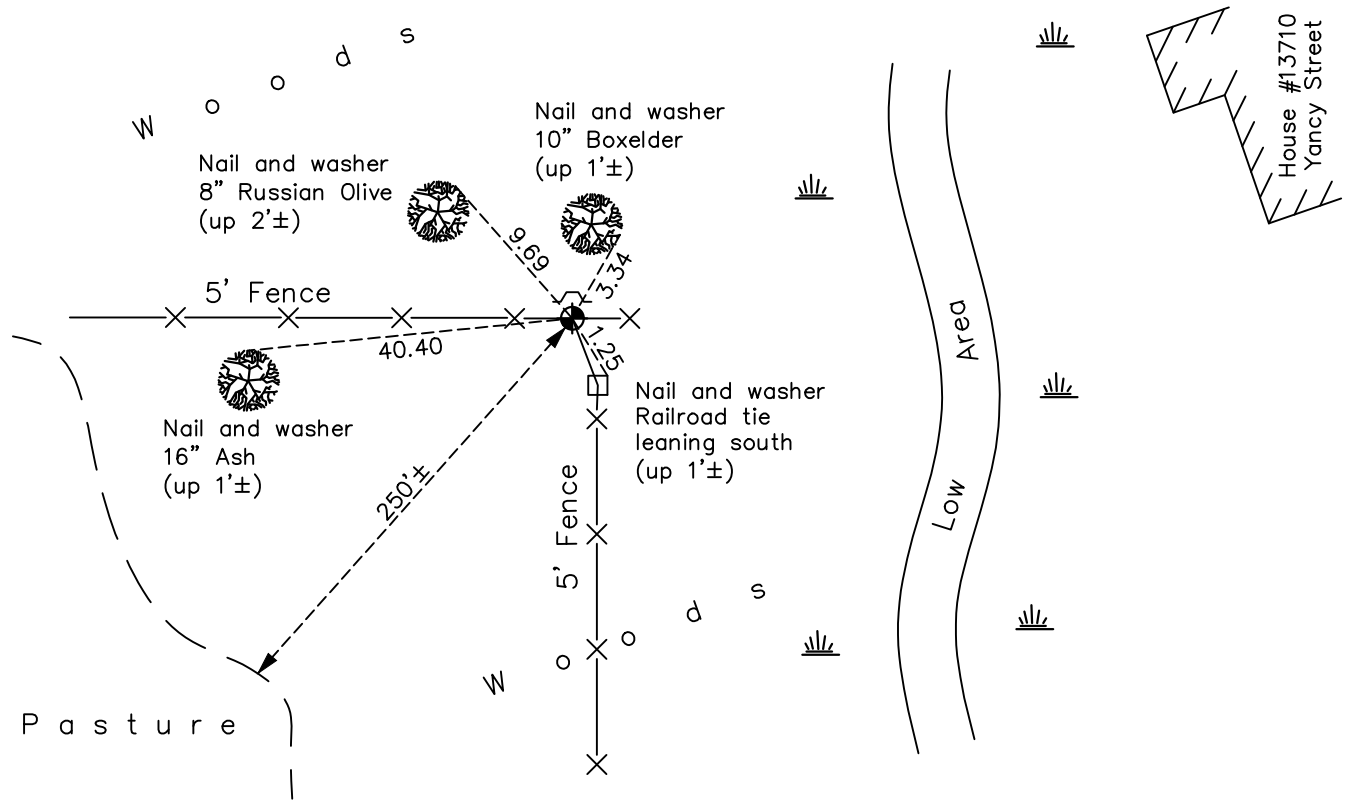
West 1/4 Corner of Sec. 34 Township 32 Range 23

On the 22nd day of March, 1966, the described corner was evidenced by a stone monument

and to perpetuate the location of said corner, at the exact location thereof, a permanent marker was placed consisting of a cast iron monument with a sign and post on the north side

AND on the 6th day of May, 2021, said permanent marker was Reset CIM using static GPS method after found disturbed. Updated ties.

Updated reference ties are as shown below.



N.A.D. 1983 Coordinates
(1996 Adjustment)

County Project Coordinates	
Northing	<u>166876.4524</u>
Easting	<u>516145.2201</u>
Date	<u>2/11/02</u>

Revision Date
7/27/2021

I hereby certify that this United States public land survey monument record is correct and complete to the best of my knowledge and belief.

David Zieglmeier Date 7/21/22

David Zieglmeier Anoka County Surveyor
Minnesota License Number 46179

HISTORY OF GOVERNMENT CORNER

Page No. 126

County of Anoka

State of Minnesota

West 1/4 Corner of Sec. 34 Township 32 Range 23

CORNER HISTORY:

February 1855 - This corner was established by Hiram Taylor, Deputy Surveyor. Taylor marked the position by "Set quarter section post" with two bearing trees marked as accessories.

April 1965 - Jim Kurth found a 12" x 16" boulder on the west side of fence post down 2". Updated ties.

March 22, 1966 - Found 12" x 16" boulder on west side of fence post using Jim Kurth ties of April 1965. Boulder has a small drill hole north of center. Updated ties to drill hole.

August 10, 1966 - Found boulder with drill hole and updated ties.

June 23, 1971 - Found boulder with drill hole and updated ties.

June 23, 1975 - Found boulder with drill hole and updated ties.

June 21, 1978 - Found boulder with drill hole and updated ties.

July 7, 1981 - Found boulder with drill hole and updated ties.

August 17, 1995 - Replaced stone boulder with a cast iron monument. Updated ties. Set sign and post on the north side.

August 16, 1996 - Found cast iron monument and updated ties.

February 11, 2002 - Found cast iron monument and updated ties. Established NAD 1983 (1996 adj.) Anoka County project coordinates by static GPS methods.

March 25, 2011 - Found cast iron monument and updated ties.

February 7, 2017 - Found cast iron monument flush and updated ties.

May 6, 2021 - Reset CIM after found disturbed using static GPS methods. Verified location of corner by GPS VRS method. Updated ties.