

CERTIFICATE OF LOCATION OF GOVERNMENT CORNER

County of Anoka

State of Minnesota

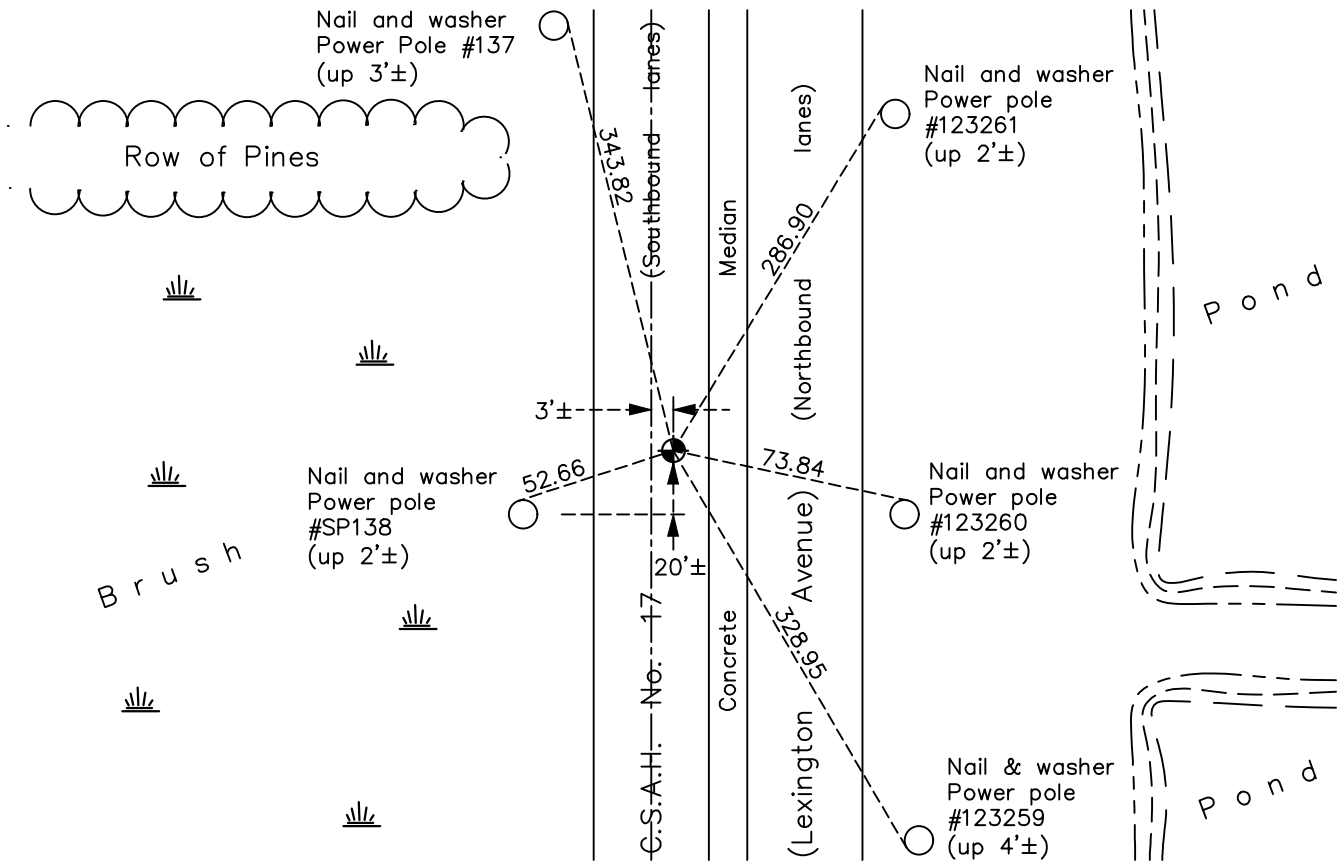
East 1/4 Corner of Sec. 35 Township 32 Range 23

On the 8th day of August, 1969, the described corner was evidenced by area resurvey

and to perpetuate the location of said corner, at the exact location thereof, a permanent marker was placed consisting of a cast iron monument

AND on the 21st day of April, 2021, said permanent marker was found flush and the ties were updated

Updated reference ties are as shown below.



Revision Date
7/27/2021

N.A.D. 1983 Coordinates
 (1996 Adjustment)

County Project Coordinates	
Northing	<u>166798.1632</u>
Easting	<u>526720.0037</u>
Date	<u>12/13/01</u>

I hereby certify that this United States public land survey monument record is correct and complete to the best of my knowledge and belief.

David Zieglmeier Date 7/21/22

David Zieglmeier Anoka County Surveyor
 Minnesota License Number 46179

HISTORY OF GOVERNMENT CORNER

Page No. 128

County of Anoka

State of Minnesota

East 1/4 Corner of Sec. 35 Township 32 Range 23

CORNER HISTORY:

February 1855 - This corner was established by Hiram Taylor, Deputy Surveyor. Taylor marked the position by "Set quarter section post" with one bearing tree marked as an accessory.

August 8, 1969 - Set cast iron monument flush using area resurvey. Established ties to monument.

May 25, 1971 - Found cast iron monument and updated ties.

June 16, 1972 - Found cast iron monument down and raised flush.

July 18, 1975 - Found cast iron monument and updated ties.

June 21, 1978 - Found cast iron monument and updated ties.

June 28, 1984 - Found cast iron monument and updated ties.

June 30, 1987 - Found cast iron monument and updated ties.

November 26, 1991 - Found cast iron monument and updated ties.

August 16, 1996 - Found cast iron monument and updated ties.

June 1, 1999 - Found cast iron monument and updated ties.

December 13, 2001 - Found cast iron monument and updated ties. Established NAD 1983 (1996 adj.) Anoka County project coordinates by static GPS methods.

April 21, 2011 - Found cast iron monument and updated ties.

May 14, 2012 - Found cast iron monument. Set construction ties, verified position by VRS GPS methods and updated ties prior to road construction. Removed monument.

October 25, 2013 - Set cast iron monument flush after road construction using static GPS methods. Verified position by VRS GPS methods and updated ties.

March 13, 2017 - Found cast iron monument. Verified position by VRS GPS methods. Updated ties.

April 21, 2021 - Found cast iron monument flush. Verified position by VRS GPS methods. Updated ties.