

CERTIFICATE OF LOCATION OF GOVERNMENT CORNER

County of Anoka

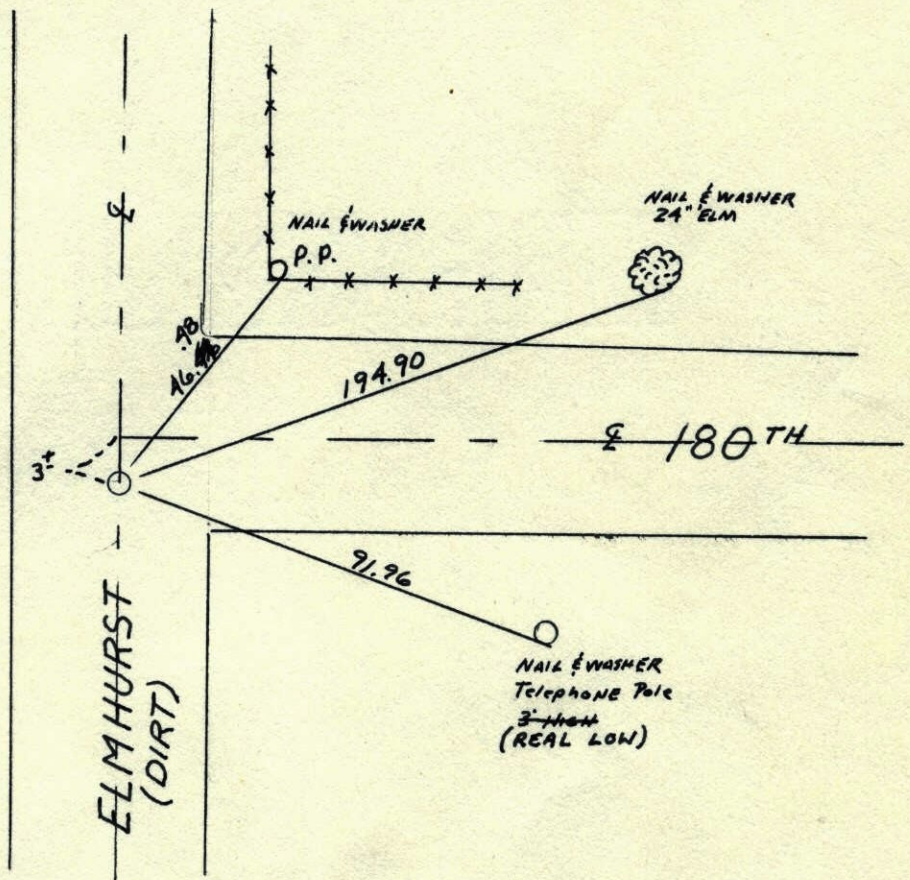
State of Minnesota

NORTHEAST Corner of Sec. 1 Township 31 Range 22

I hereby certify that on the 27 day of JUNE, 1967, I found the described corner which was evidenced by GRANITE

and I further certify that to perpetuate the location of said corner, I did, at the exact location thereof, place a permanent marker consisting of CAST IRON MONUMENT OVER GRANITE MON.

which reference or witness monuments are located in the manner following:



43 { 164129.2557
563644.8841

Revised date
7-21-86
10-17-91
7-1-96
2-25-98

By
D. Ross

Minnesota State Plane Coordinates
South Zone

Y _____ X _____

_____,
County Surveyor Date

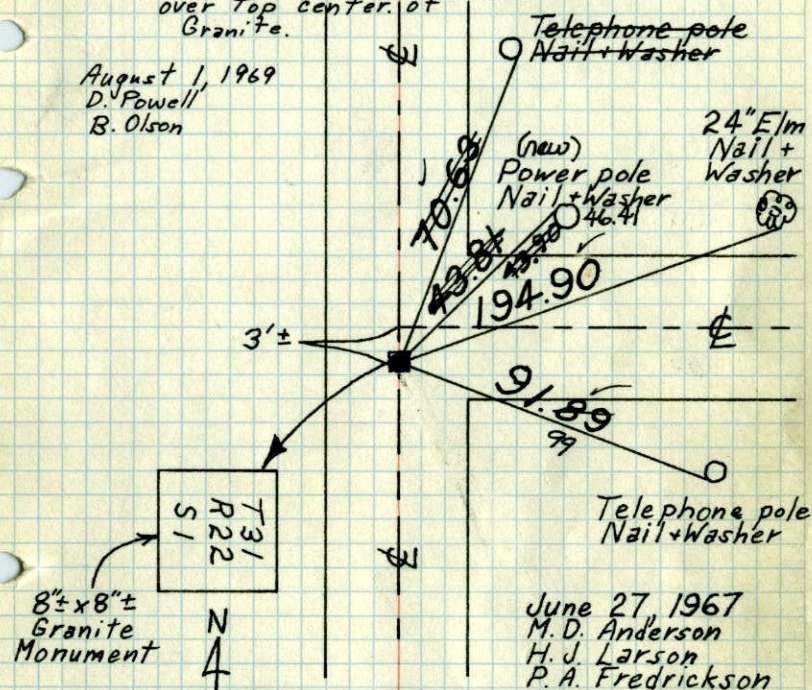
Registered Land Surveyor No. _____

NE Cor. Sec. 1 - T31 - R22

Found Township Granite Monument down
20"± in dirt road

Placed ~~1/2" Iron Pipe~~ over top center,
Placed Cast Iron Monument down 0.5'
over top center of
Granite.

August 1, 1969
D. Powell
B. Olson



8"± x 8"±
Granite
Monument

Tie Check
June 21, 1973
B. Olson
D. Grien
D. Farmer

TIE CHECK
MAY 12, 1977
R. SPANNERUD
D. DAHL

TIE CHECK
7-24-80
B. STEPHENS
P. ROSS
P. HORNBY

TEMPERATURE CORRECTED
AND HORIZONTALLY
TAPED MEASUREMENTS

ROLAND W. ANDERSON
COUNTY SURVEYOR
ANOKA COUNTY, MINNESOTA

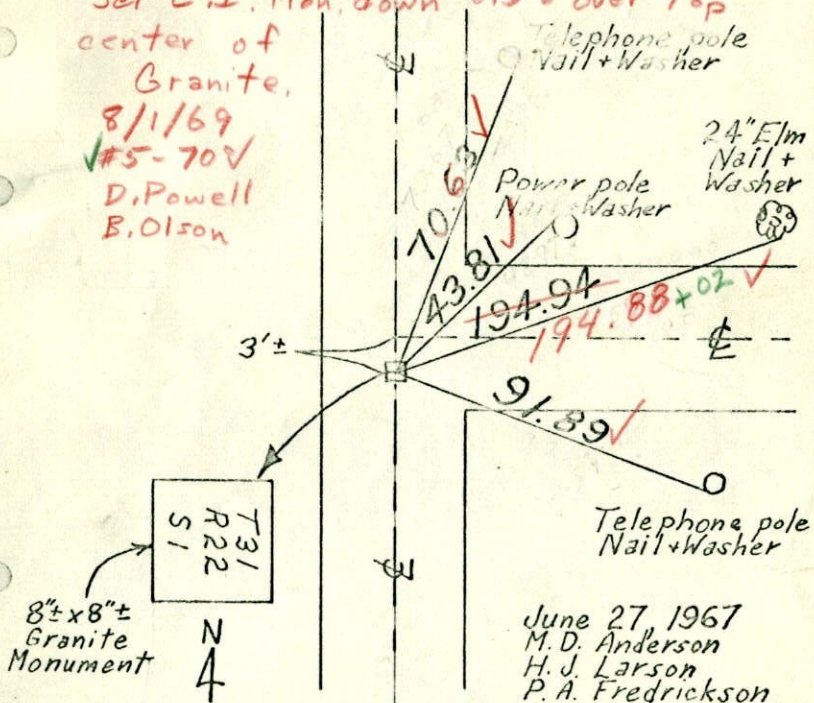
NE Cor. Sec. 1 - T31 - R22

1969

Found Township Granite Monument down
20"± in dirt road

Placed ~~1/2" Iron Pipe~~ over top center
Set C.I. Mon. down 0.5'± over top
center of
Granite.

8/1/69
#5-70V
D. Powell
B. Olson



8"± x 8"±
Granite
Monument

June 27, 1967
M. D. Anderson
H. J. Larson
P. A. Fredrickson

TEMPERATURE CORRECTED
AND HORIZONTALLY
TAPED MEASUREMENTS

ROLAND W. ANDERSON
COUNTY SURVEYOR
ANOKA COUNTY, MINNESOTA

1967

N.E. Cor. Sec. 1 - T31-R22

Found Township Granite Mon
down 20"± in dirt Rd.

Placed 1/2" I.P. over top Center

Printing Redd Facing East from North to South

See diagram

June 27, 1967

M.D. Anderson
H.V. Carlson
P.A. Friedrichson

temp. 74° ✓
tape # 5 ✓

