

CERTIFICATE OF LOCATION OF GOVERNMENT CORNER

County of Anoka

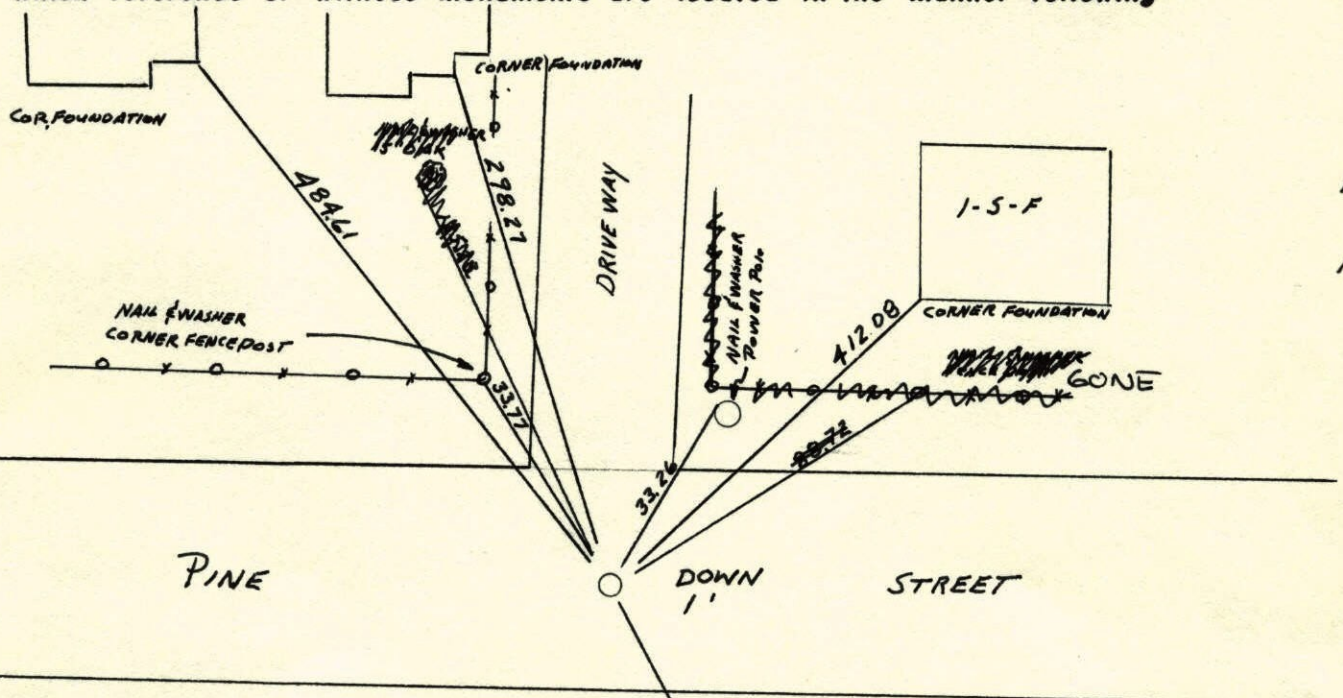
State of Minnesota

NORTHEAST Corner of Sec. 5 Township 31 Range 22

I hereby certify that on the 13 day of MAY, 1963, I found the described corner which was evidenced by CONCRETE

and I further certify that to perpetuate the location of said corner, I did, at the exact location thereof, place a permanent marker consisting of CAST IRON MONUMENT OVER CONCRETE MONUMENT

which reference or witness monuments are located in the manner following:



N.A.D.	1983	Co-ordinates
County	Project	Co-ordinates
Northing	164099.8276	#50
Easting	542645.5112	
State Plane Co-ordinates		
Y	_____	
X	_____	
Date	_____	

Revised date	By
7-14-86	D. Ross
6-27-91	
3-2-98	

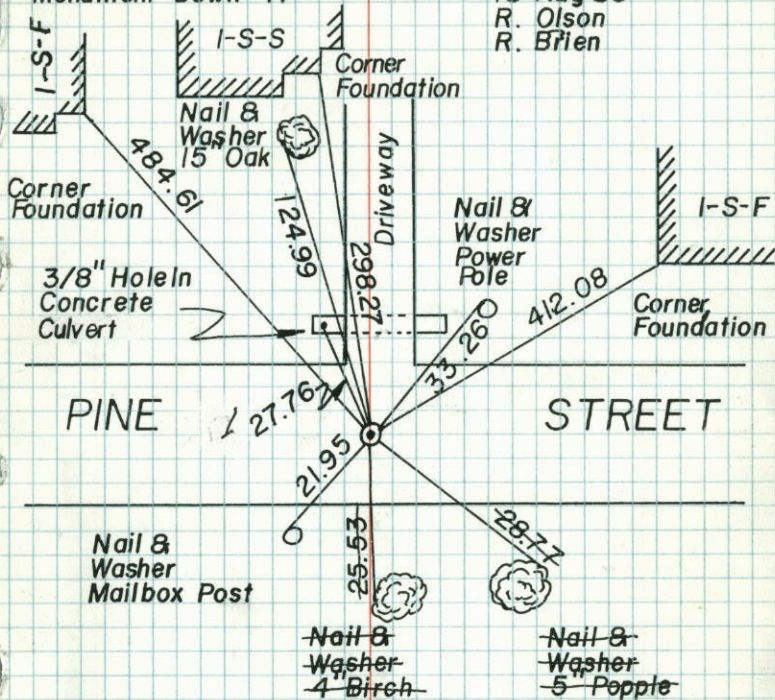
Minnesota State Plane Coordinates
 South Zone
 Y _____ X _____
 _____ , _____
 County Surveyor Date
 Registered Land Surveyor No. _____

N.E. Corner Section 5, T31, R22

Set Cast Iron Monument Down 0.4' On Top Of Concrete

Monument Down 17"

13 Aug 69
R. Olson
R. Brien



TIE CHECK
14 JUN 73
B. OLSON
D. BRIEN
D. FARMER

TIE CHECK
17 MAY 76
G. ADAMS
S. BRIEN
J. STEPHENS

TIE CHECK
7-30-80
B. STEPHENS
P. ROSS
P. HORNBY

LOWERED
CAST IRON
4-17-79
H. LARSON
B. GUETZKO
D. NAGLAK

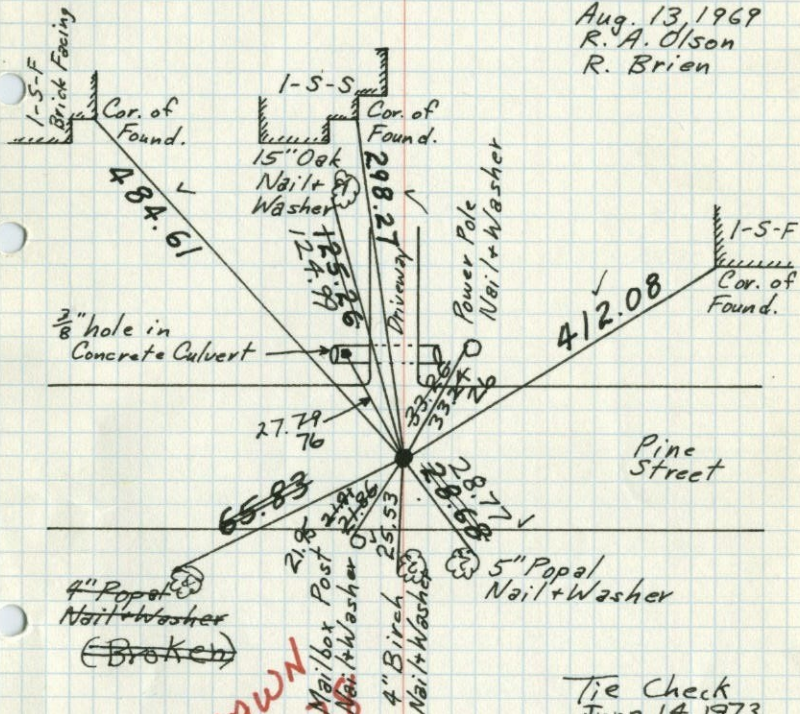
TEMPERATURE CORRECTED
AND HORIZONTALLY
TAPED MEASUREMENTS

ROLAND W. ANDERSON
COUNTY SURVEYOR
ANOKA COUNTY, MINNESOTA

NE Cor. Sec. 5-T31-R22

Set Cast Iron Monument down 0.4' on top
of Concrete Monument down 17".

Aug. 13, 1969
R. A. Olson
R. Brien



RE DRAWN
20 DEC
SEE NEW
TIE BOOK

Tie Check
June 14, 1973
B. Olson
D. Brien
D. Farmer

TIE CHECK
MAY 17, 1976
G. ADAMS
S. BRIEN
J. STEPHENS

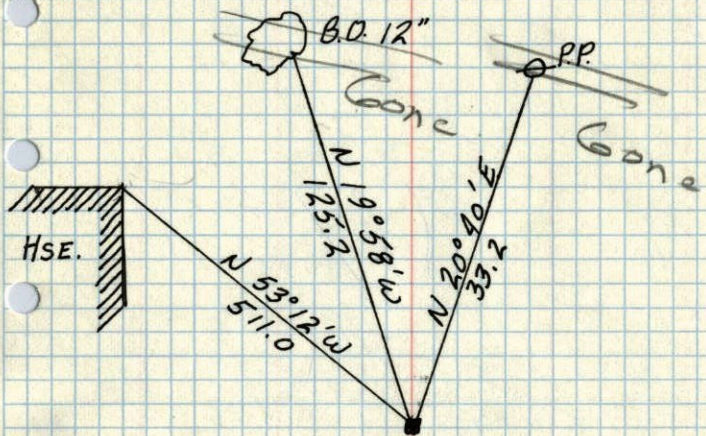
TEMPERATURE CORRECTED
AND HORIZONTALLY
TAPED MEASUREMENTS

ROLAND W. ANDERSON
COUNTY SURVEYOR
ANOKA COUNTY, MINNESOTA

1943 3

N.E. Sec. 5, Twp 31, Rge 22

CONCRETE MONUMENT



~~Could not find
3/14/42~~



Found & Retied
14 May 63

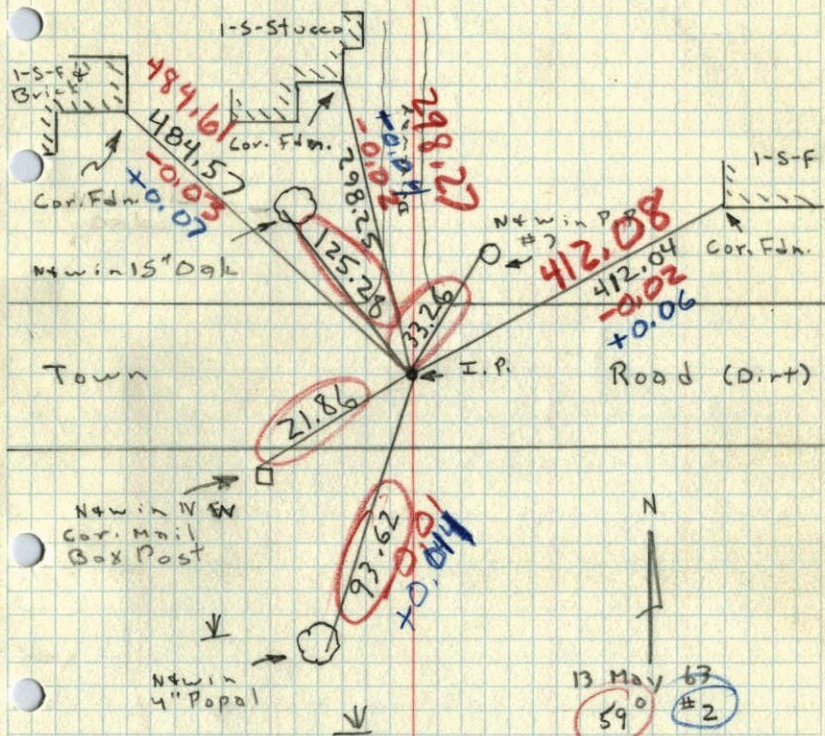
SEPT. 6, 1943
CARTWRIGHT

.72 W & 0.47 N

1963

NE Cor. Sec. 5, T31, R22

Found 4" Sq. Conc. Mon. with I.P. on No. Side down 17" - set I.P. down 0.1' Cor. is 0.72' West and 0.47' North of Hub Set by Milner Carley Assoc. as approx NE Cor. Sec.



13 May 63
590 #2
J. Oliver
M.D. Anderson