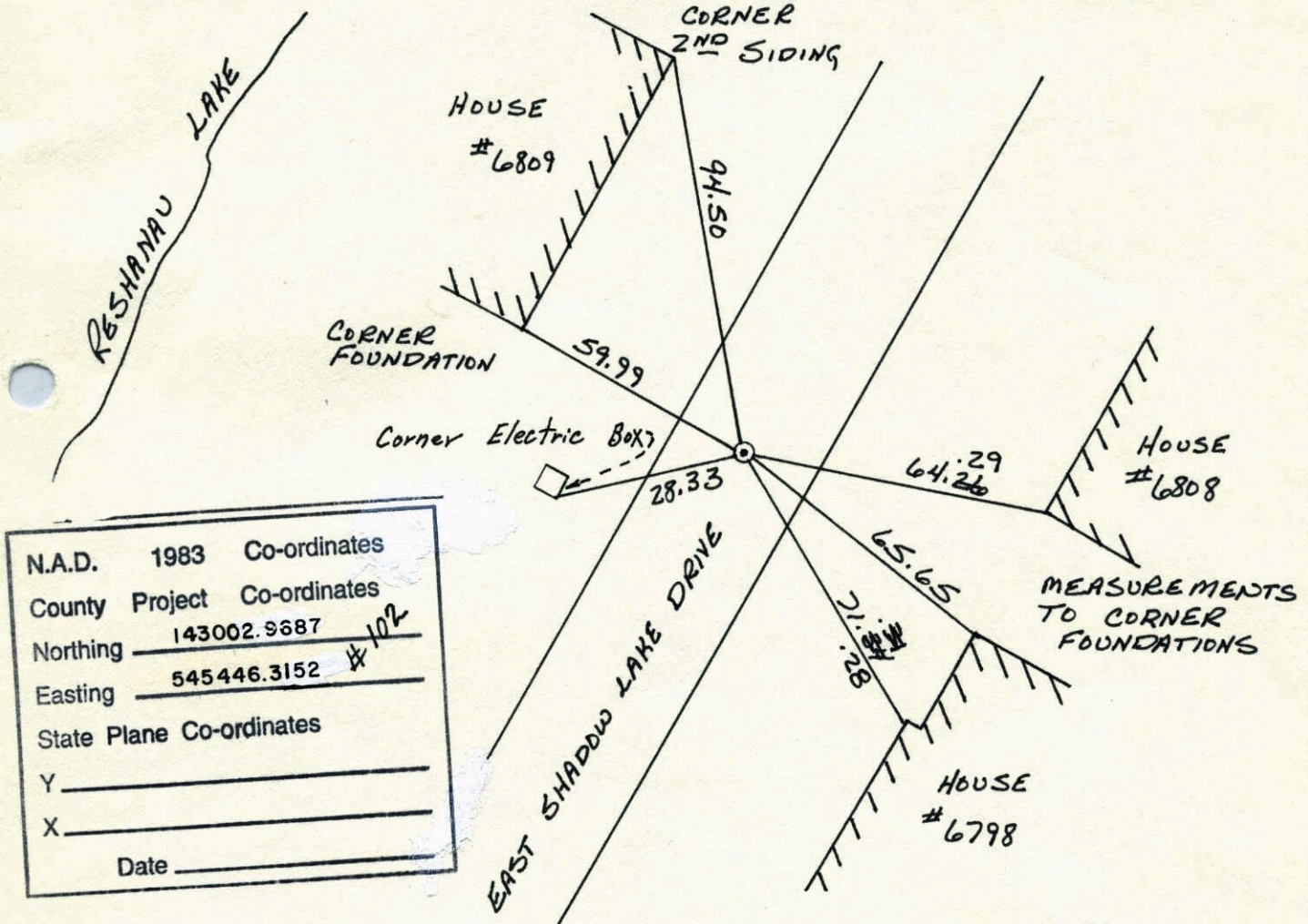


CERTIFICATE OF LOCATION OF GOVERNMENT CORNER

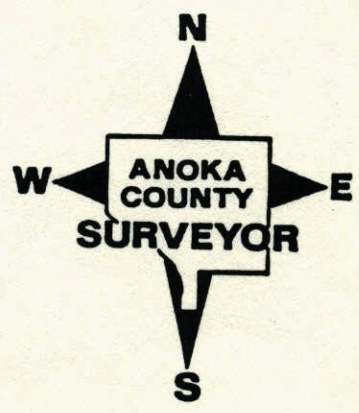
WITNESS CORNER County of Anoka State of Minnesota
 ON THE NORTH LINE
 OF THE NE 1/4 Corner of Sec. 28 Township 31 Range 22

I hereby certify that on the _____ day of _____, 19____, I found the described corner which was evidenced by RESURVEY. CORNER NOW FALLS IN LAKE. RESURVEYED FOR NEW LOCATION ORIGINALLY IRON PIPE SET BY SUBURBAN ENGINEERING. and I further certify that to perpetuate the location of said corner, I did, at the exact location thereof, place a permanent marker consisting of CAST IRON MONUMENT SET IN STREET AS NEW LOCATION which reference or witness monuments are located in the manner following:



N.A.D.	1983	Co-ordinates
County	Project	Co-ordinates
Northing	143002.9687	
Easting	545446.3152 #102	
State Plane Co-ordinates		
Y	_____	
X	_____	
Date	_____	

Revised date	Revised date	Revised date
8-29-86		
9-25-89		
5-29-90		
8-31-91		
6-19-96 HL		
3-16-98		
8-28-00		
11-13-00		

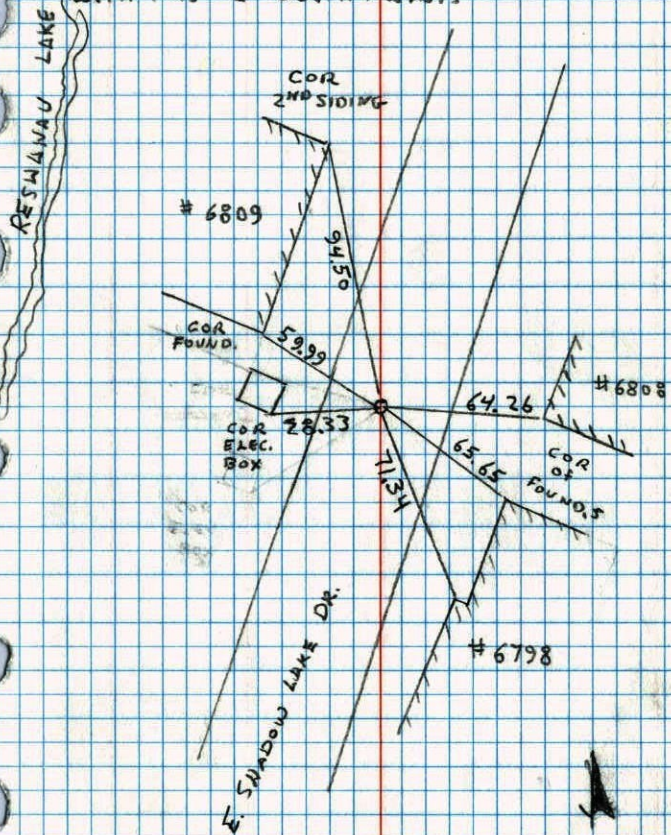


REPLACED
 RESET W/
 P.K.
 RESET G.I.

W.C. ON NORTH LINE OF SEC. 28 T31 R22

RESET CAST IRON IN NEW LOCATION C.I. FLUSH

WITH PKs 2' SOUTH & WEST

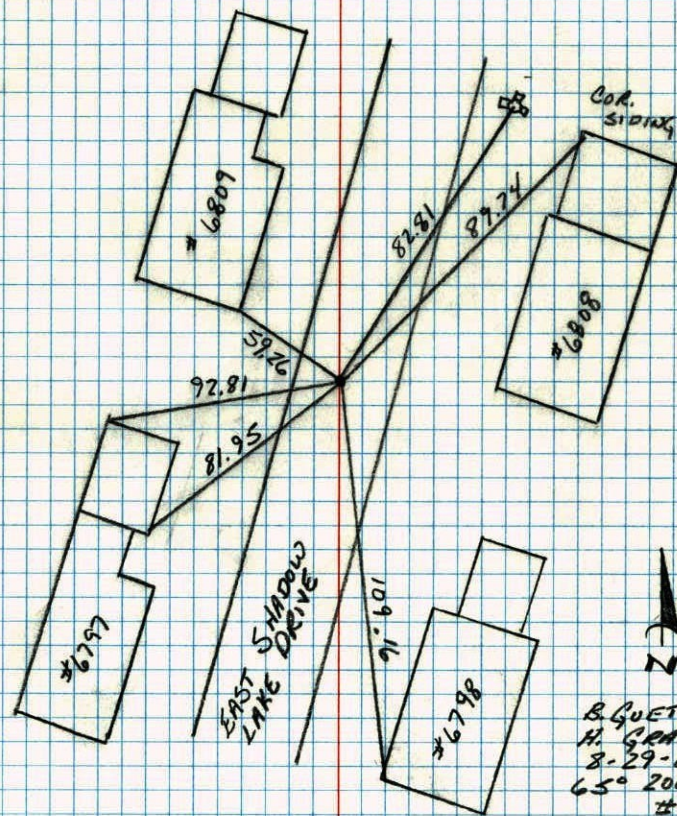


5-29-90
N. LARSON
B. GUETZKO

W.C. ON NORTH LINE OF NE 1/4 SEC 28

T 31 R 22

SET 1/2" IRON PIPE FROM RESURVEY BETWEEN
W.C. ON RESNAU LAKE AND W.C. ON WARD
LAKE

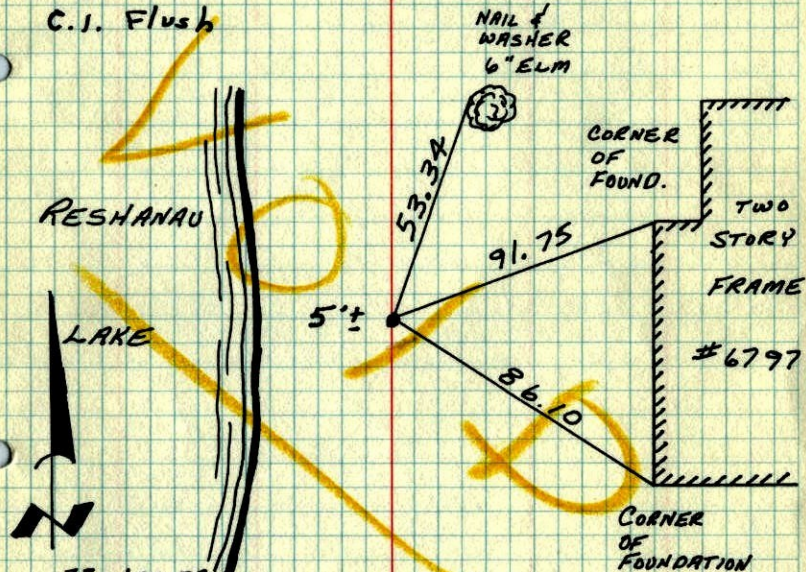


B. GUETZKO
H. GRAMS
8-29-86
65° 200 TAB
#5

WITNESS CORNER ON NORTH LINE OF N.E. 1/4 SEC. 28-T.31-R.22

IRON PIPE SET BY SUBURBAN ENGINEERING CO., RESET BY M.A. ANDERSON. TIE CHECK IN 1977 BY R. SANNERUD +. CHECKED AND REDRAWN BY H. LARSON, B. GUETZKO, J. BOETTCHER. 1/2" IRON PIPE DOWN .5' Replace I.P. with cast iron

C.I. Flush



23-JAN 78
H. LARSON
B. GUETZKO
J. BOETTCHER

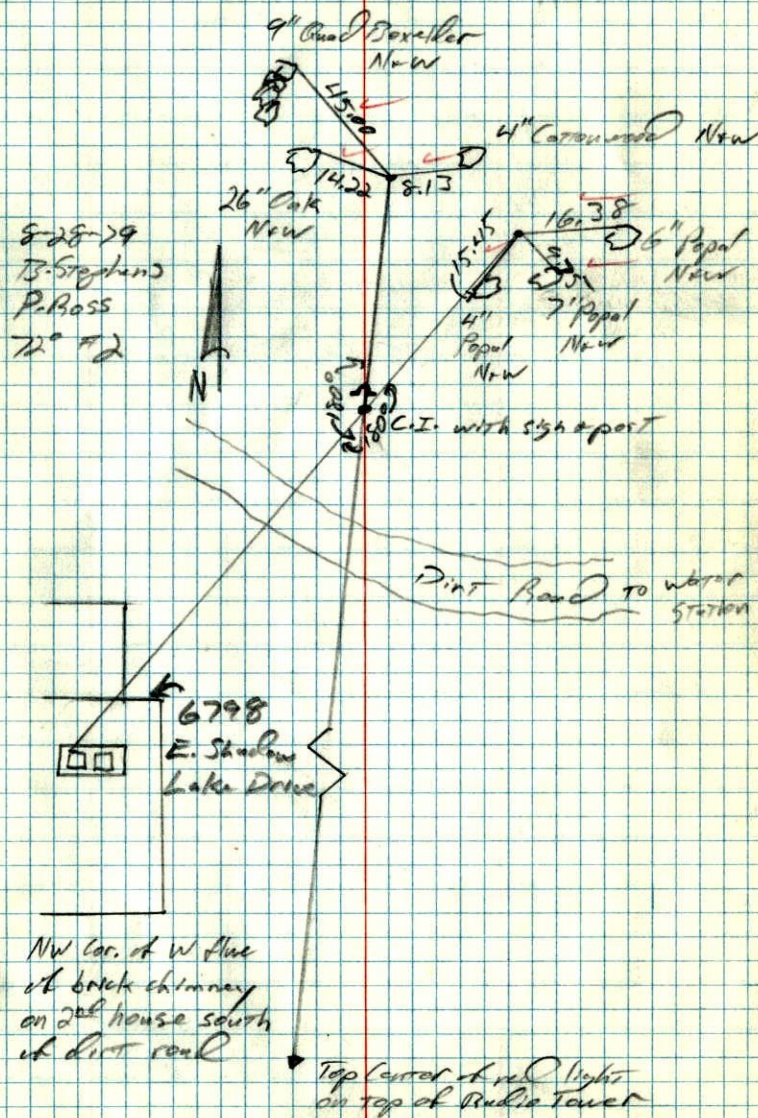
TIE CHECK
8-13-80
B. STEPHENS
P. ROSS
P. HORNBY

TEMPERATURE CORRECTED
AND HORIZONTALLY
TAPED MEASUREMENTS

ROLAND W. ANDERSON
COUNTY SURVEYOR
ANOKA COUNTY, MINNESOTA

5-26-78
H. Larson
B. Guetzko
D. Dahl

Set Transit ties from
cast iron monument.



8-28-79
B. Stephens
P. Ross
72° 42'



NW cor. of W line
of brick chimney
on 2nd house south
of dirt road

Top corner of red light
on top of Public Tower

W.C. on N. Line of NE 1/4 Sec. 28 T31 R22

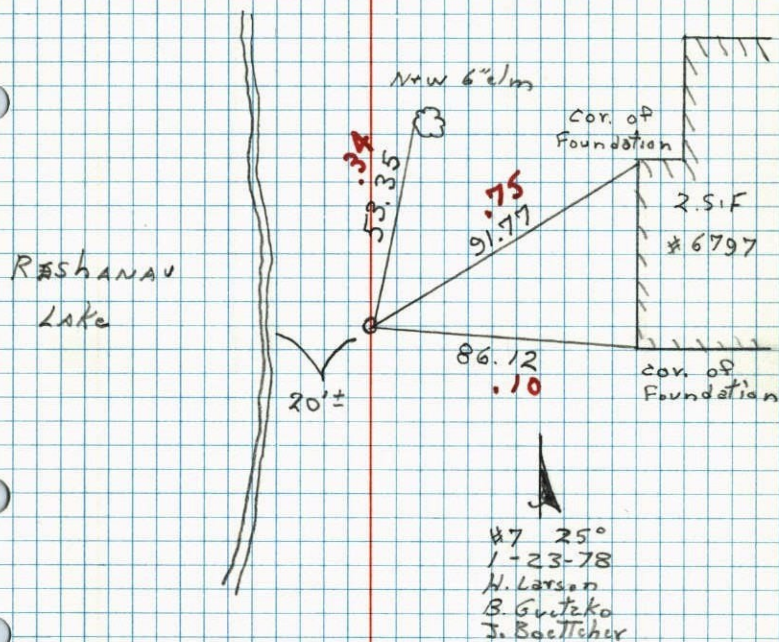
Iron pipe set by Suburban Eng. gone

Reset by M.D. Anderson. Tie check in 1977

by R. Sannerud +

Checked and redrawn by H. Larson, B. Guetzko

J. Boettcher 1/2 I.P. down .5' ±



W.C. on North Line Sec. 28-T31-R22

Iron Pipe set by Suburban Eng.

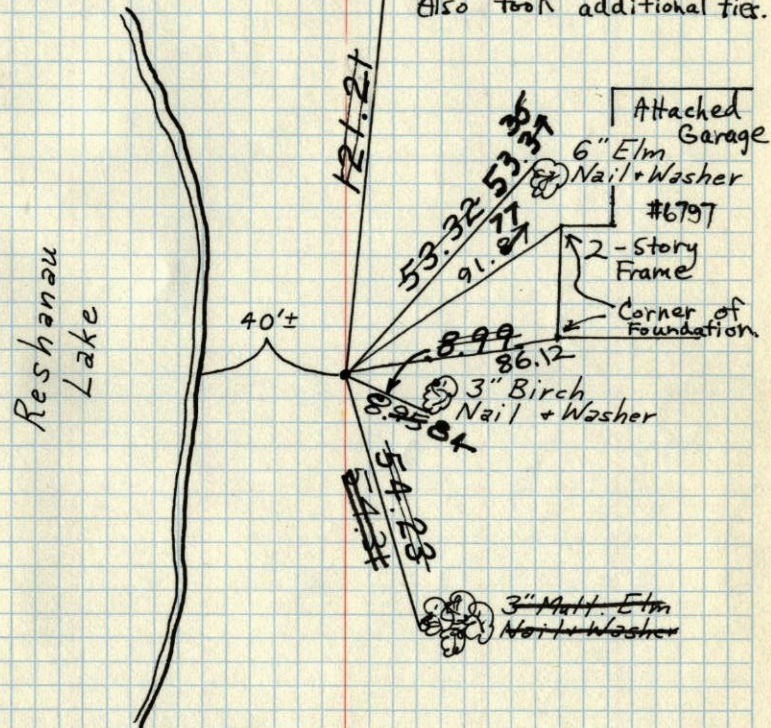
East Side of Reshanau Lake.

March 16, 1970

M. D. Anderson

H. V. Larson

R. A. Olson



TIE CHECK
JUNE 1, 1977

R. SANNERUD

G. ADAMS

S. BRIEN

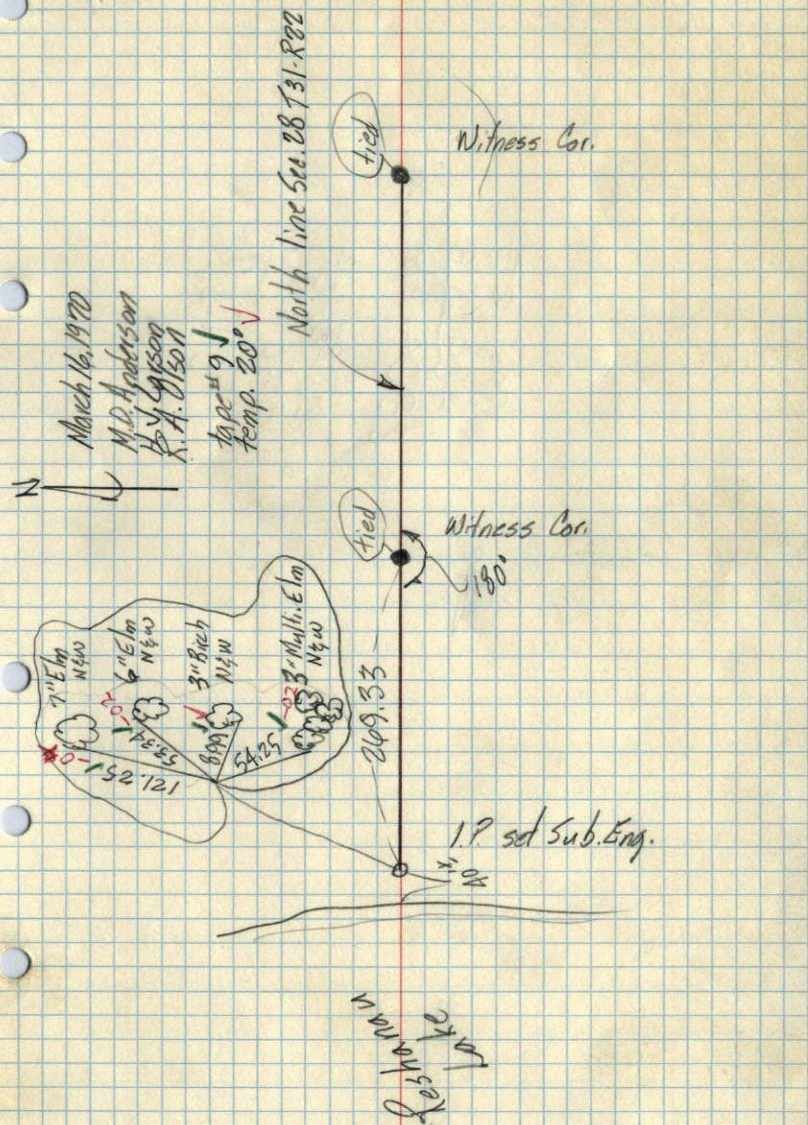
J. STEPHENS

TEMPERATURE CORRECTED
AND HORIZONTALLY
TAPED MEASUREMENTS

2/10
springs

1970

W.C. on N. Line - Sec. 28-T31-R22



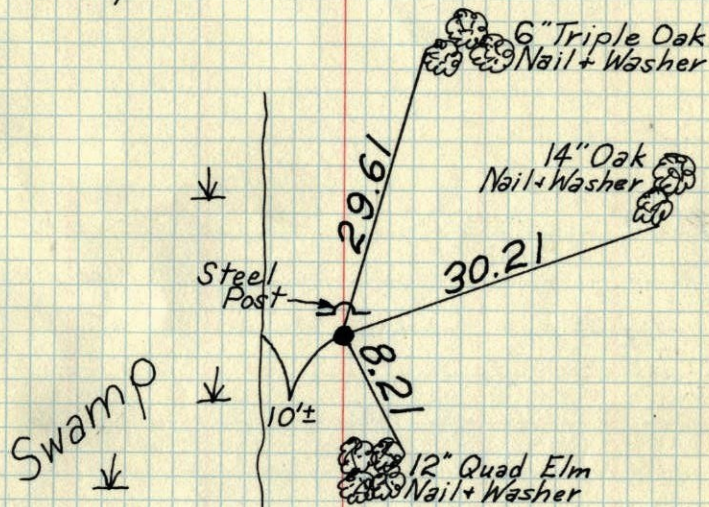
(see new 102)

102
1968

W.C. on North line Sec. 28-T31-R22

East Side of Reshanau Lake

Set Corner from area resurvey. Set Cast Iron Monument flush. Placed Steel Post $\frac{1}{2}$ ' North and up 3'±.



March 26, 1968
M. D. Anderson
H. J. Larson
R. A. Olson

TEMPERATURE CORRECTED
AND HORIZONTALLY
TAPED MEASUREMENTS

ROLAND W. ANDERSON
COUNTY SURVEYOR
ANOKA COUNTY, MINNESOTA

W.C. on North line Sec. 28-T31-R22 ¹⁹⁶⁸

East Side Reshawan Lake

Set Cor. from area resurvey

~~Set Bridge spike~~

Set Cast Iron Mon. flush

Place steel post $\frac{1}{2}$ ' north & up 3'

March 26, 1968

M.D. Anderson

H.J. Larson

R.A. Olson

temp. 55°

tape # 5

SWAMP

steel post

