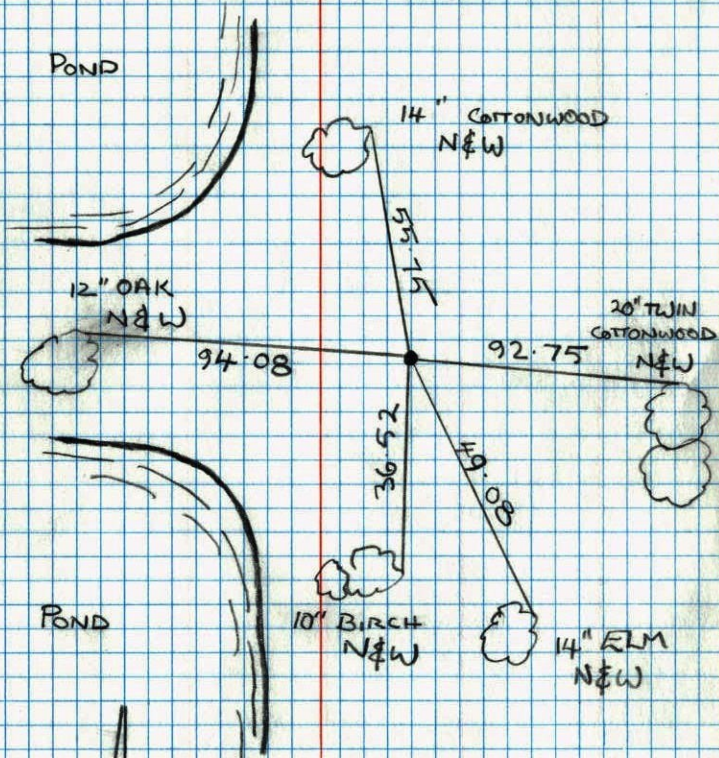


WEST QUARTER COR. SEC 30 T.31 R.22

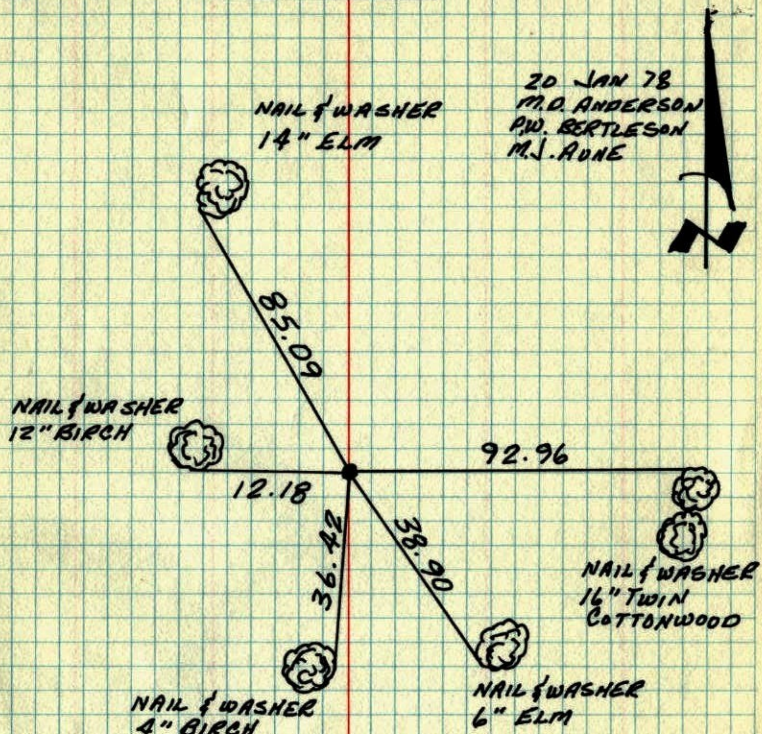
RETIE OF RED & WHITE IRON PIPE



H. LARSON  
B. KLEMMZ  
M. STEWART  
11-14-91

W 1/4 COR. SECTION 30-T31-R22

PLACED CORNER FROM AREA RESURVEY. SET  
RED AND WHITE IRON PIPE UP 3'±



20 JAN 78  
M.D. ANDERSON  
P.D. BERTLESAN  
M.J. ADNE

TEMPERATURE CORRECTED  
AND HORIZONTALLY  
TAPED MEASUREMENTS

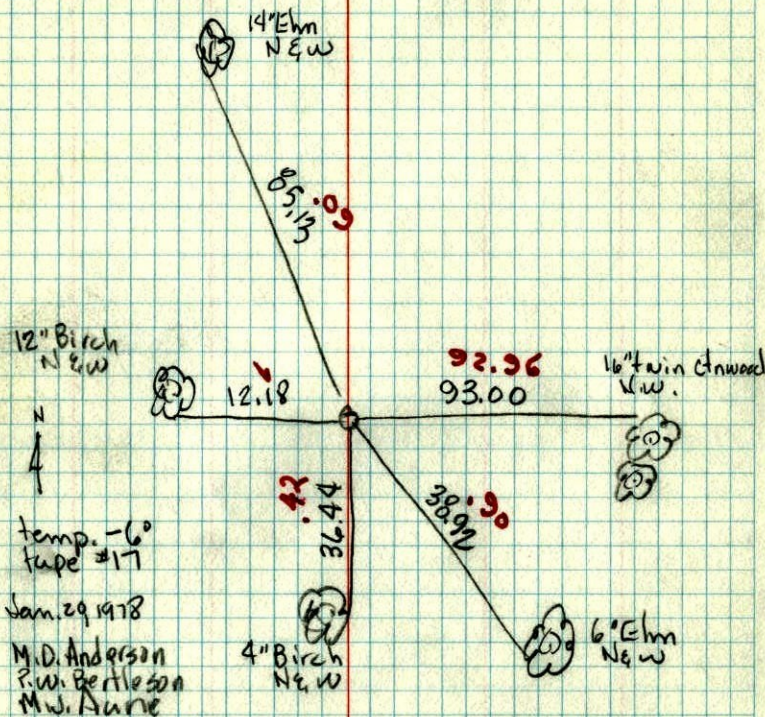
ROLAND W. ANDERSON  
COUNTY SURVEYOR  
ANOKA COUNTY, MINNESOTA



W 1/4 Cor. Sec. 30, T31, R22

~~E 1/4 Cor. Sec. 05, T31, R22~~

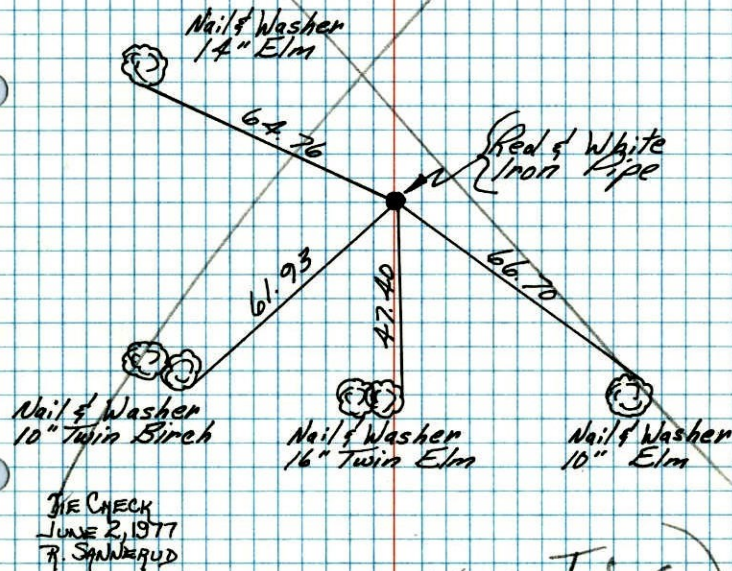
Placed corner from area resurvey  
set Red & White iron pipe up 3"



W 1/4 Corner Sec 30 - T31 - R22

Retired Concrete Monument Set In 1944  
By Cantwright. H. Larson  
B. Gyetka 2-5-76  
J. Boettcher

Replaced Concrete Monument With Red &  
White Iron Pipe Up 3"  
2-24-76  
M.D. Anderson  
R.W. Bertleson  
M.W. Aune



(See New Ties)

TEMPERATURE CORRECTED  
AND HORIZONTALLY  
TAPED MEASUREMENTS

ROLAND W. ANDERSON  
COUNTY SURVEYOR  
ANOKA COUNTY, MINNESOTA

9340-320

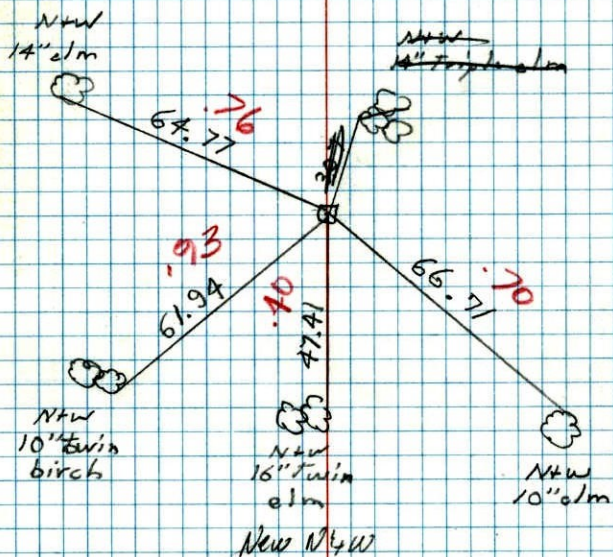


W 1/4 Cor. Sec. 30, T 31, R 22

1976

Retired concrete monument set in 1944  
by Cartwrights.

20 #11  
2-5-76  
H. Larson  
B. Gutekro  
J. Roettcher



Replaced Conc. Mon. 2/24/76 with  
Red & White Iron pipe up 3"  
Replaced after these ties and  
Cat. had run over Conc. & broke it  
off and moved it. Replaced with  
ties (Removed Conc. Mon.) M.A. Anderson  
B. Berthelson  
M. J. Hane

W 1/4 Cor. Sec. 30, T 31, R 22

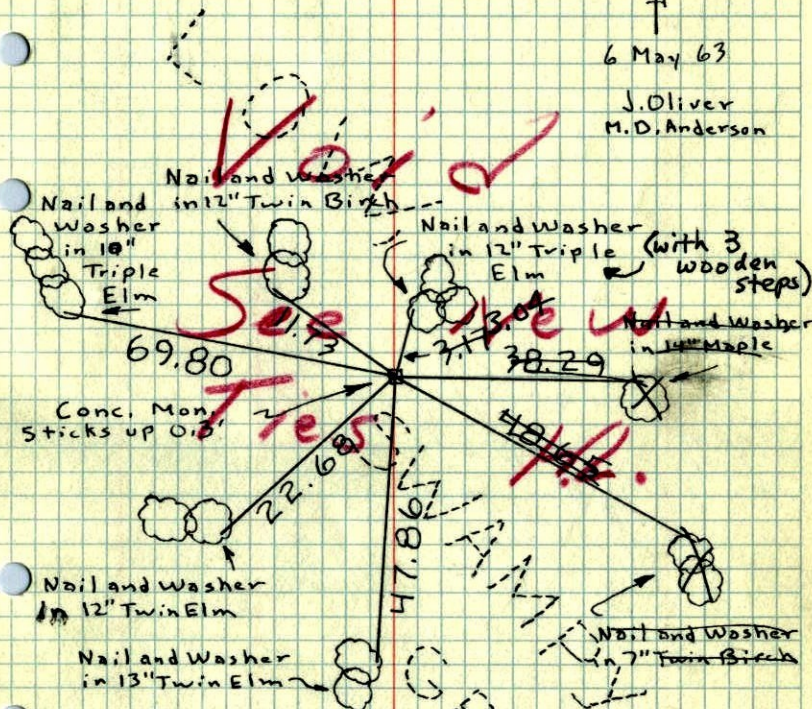
1973 107

Found 4" Sq. Concrete Monument From Cartwrights

1944 Ties.

6 May 63

J. Oliver  
M. D. Anderson



TEMPERATURE CORRECTED  
AND HORIZONTALLY  
TAPED MEASUREMENTS

Tie Check  
July 17, 1973  
B. Olson  
D. Brien  
D. Farmer

ROLAND W. ANDERSON  
COUNTY SURVEYOR  
ANOKA COUNTY, MINNESOTA



1963

W 1/4 Cor. Sec. 30, T31, R22

Found 4" Sq. Conc. Mon. from Cartwright's

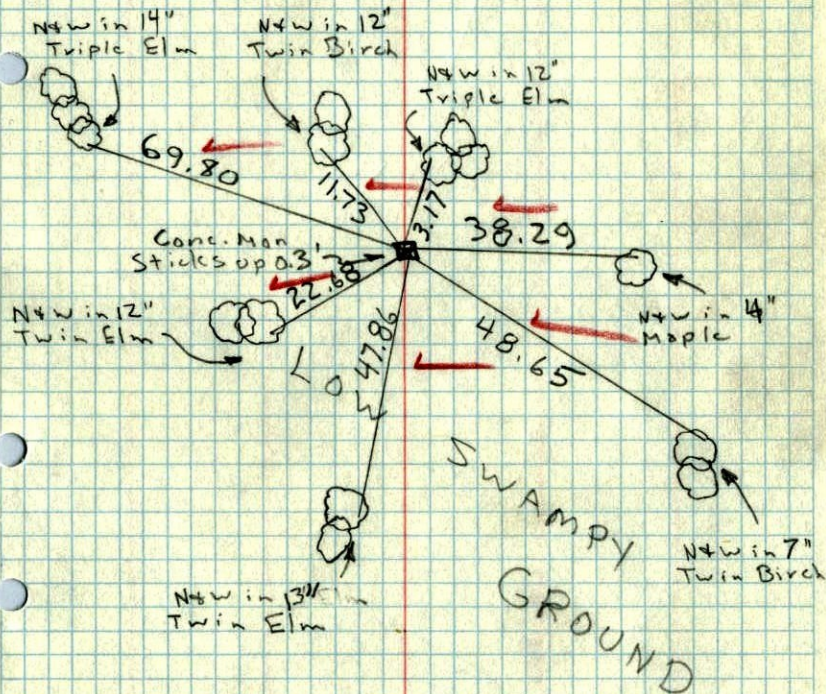
1944 Ties. Conc. leans slightly North.

Can't prove its wrong by Ties - So left it.

N 6 May 63

64°

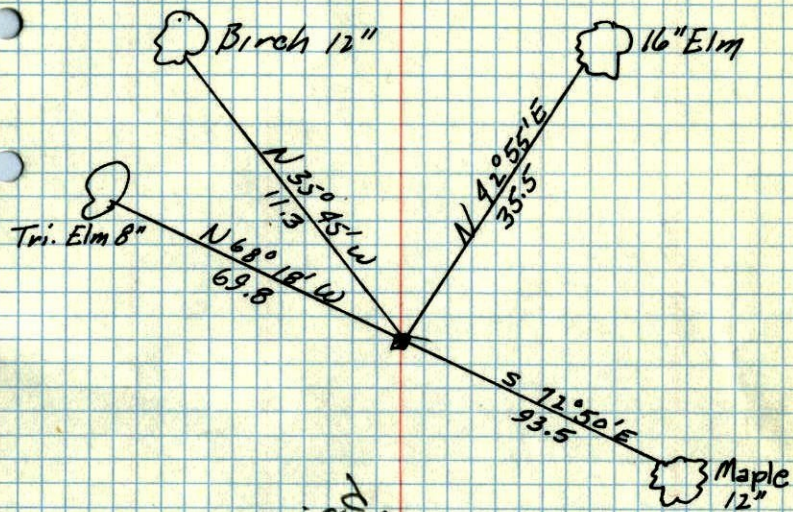
J. Oliver  
M.D. Anderson



1944 37

W 1/4 SEC 30, T31, R22

CONC. MON.



Retied

From Harvey Cartwright's Book 314  
Page 9 now in the hands of  
Consulting Engineers Diversified Inc.  
of Osseo, Minn. - 1-13-78

Dec 27, 1944  
CARTWRIGHT