

# CERTIFICATE OF LOCATION OF GOVERNMENT CORNER

County of Anoka

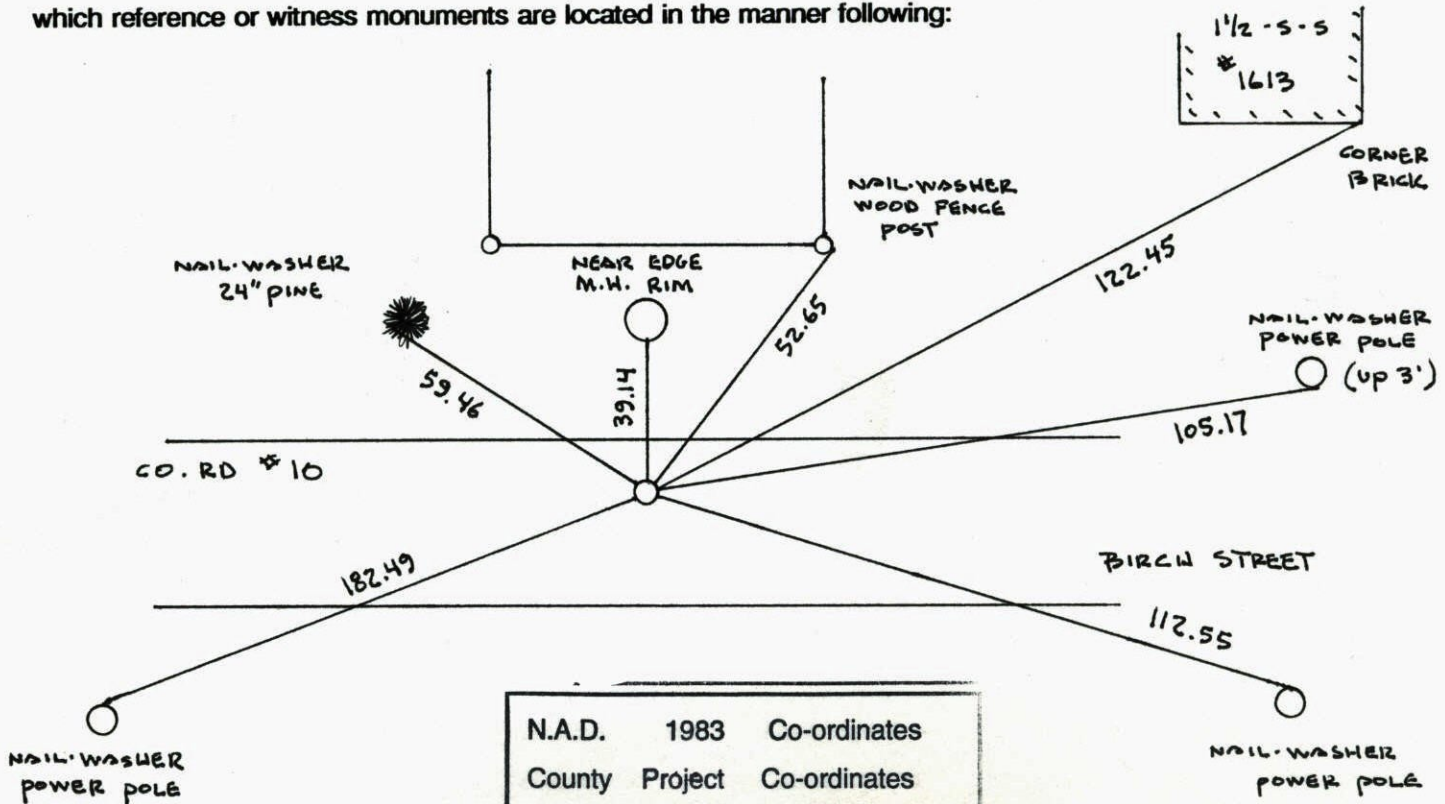
State of Minnesota

WEST 1/4 Corner of Sec. 26 Township 31 Range 22

I hereby certify that on the 10<sup>TH</sup> day of APRIL, 1962, I found the described corner which was evidenced by CONCRETE AND CARTWRIGHT TIES

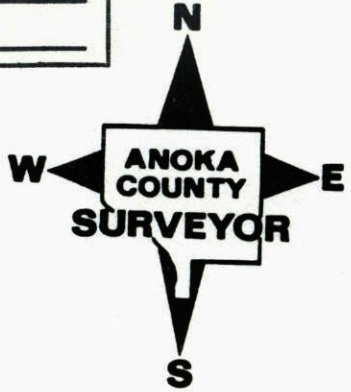
and I further certify that to perpetuate the location of said corner, I did, at the exact location thereof, place a permanent marker consisting of CAST IRON MONUMENT

which reference or witness monuments are located in the manner following:



N.A.D.	1983	Co-ordinates
County	Project	Co-ordinates
Northing	<u>140395.6915</u>	
Easting	<u>553043.0535</u>	
State Plane Co-ordinates		
Y	_____	
X	_____	
Date	_____	

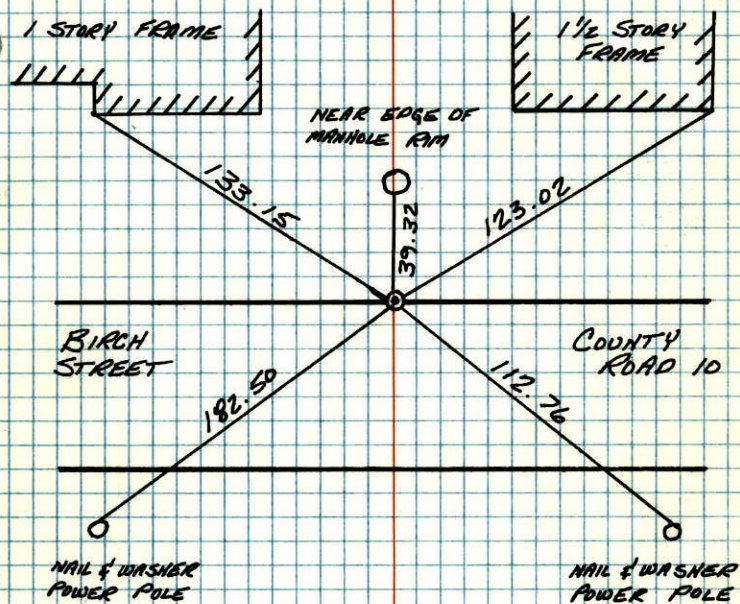
Revised date	Revised date	Revised date
12   29   81		
7   16   86		
6   21   96		
3   25   98		
8   21   00		





## W 1/4 CORNER SECTION 26-T31-R22

RETIED CAST IRON MONUMENT AFTER ROAD CONSTRUCTION.  
CAST IRON FLUSH AND ON NORTH EDGE OF BLACKTOP.



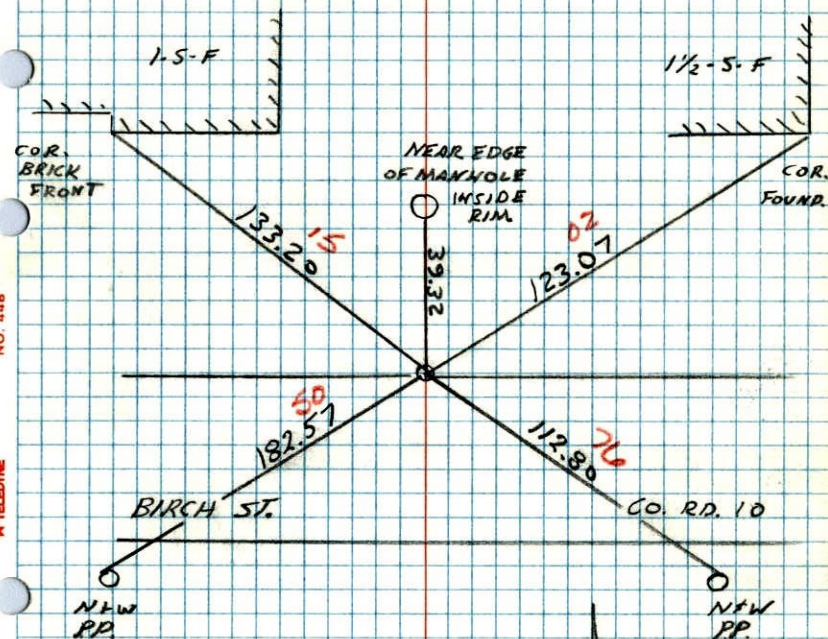
12-27-81  
H. LARSON  
B. GUETZKO  
D. NAGLAK

TEMPERATURE CORRECTED  
AND HORIZONTALLY  
TAPED MEASUREMENTS

ROLAND W. ANDERSON  
COUNTY SURVEYOR  
ANOKA COUNTY, MINNESOTA

## W 1/4 CORNER SECTION 26 T31 R22

RETIED CAST IRON MONUMENT AFTER  
ROAD CONSTRUCTION C.I. FLUSH AND  
ON NORTH EDGE OF BLACKTOP.

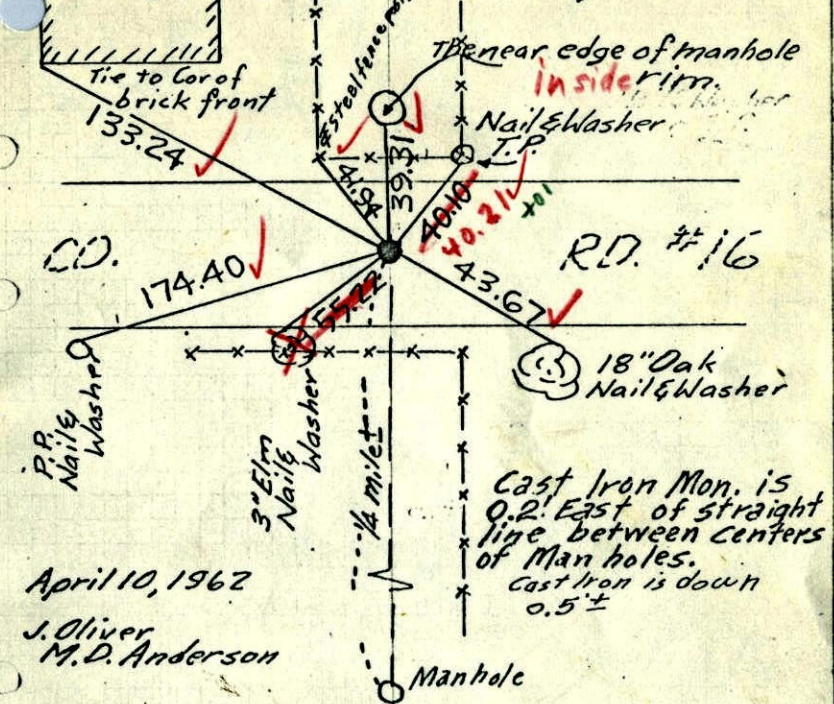


200' 5"  
12-29-81  
H. LARSON  
B. GUETZKO  
D. NAGLAK



W 1/4 COR. SEC. 26-31-22

Found Conf. Mon. lying on side in south ditch  
Set Cast iron monument by two  
1 story frame remaining Cartwright ties.



April 10, 1962  
J. Oliver  
M.D. Anderson

Retied 6-23-65  
M.D. Anderson  
John Dunlop

TEMPERATURE CORRECTED  
AND HORIZONTALLY  
TAPED MEASUREMENTS

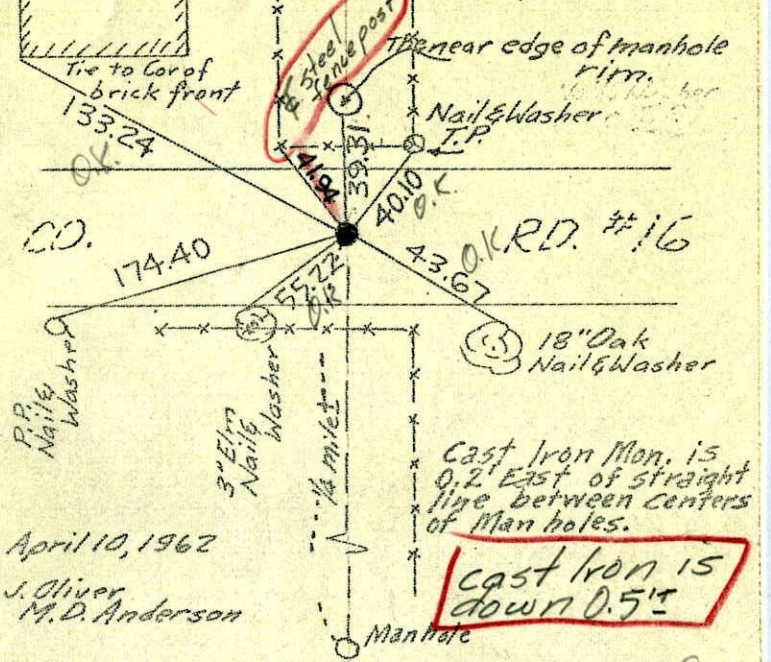
Replaced broken C.I. down  
with new C.I. Mon  
flush.

8/29/69  
#9-900  
D. Powell  
R. Olson

ROLAND W. ANDERSON  
COUNTY SURVEYOR  
ANOKA COUNTY, MINNESOTA

W 1/4 COR. SEC. 26-31-22

Found Conf. Mon. lying on side in south ditch  
Set Cast iron monument by two  
1 story frame remaining Cartwright ties.



April 10, 1962  
J. Oliver  
M.D. Anderson

cast iron is down 0.5"

All ties Good

TEMPERATURE CORRECTED  
AND HORIZONTALLY  
TAPED MEASUREMENTS

tie check  
June 23, 1965  
M.D. Anderson  
J. Dunlop

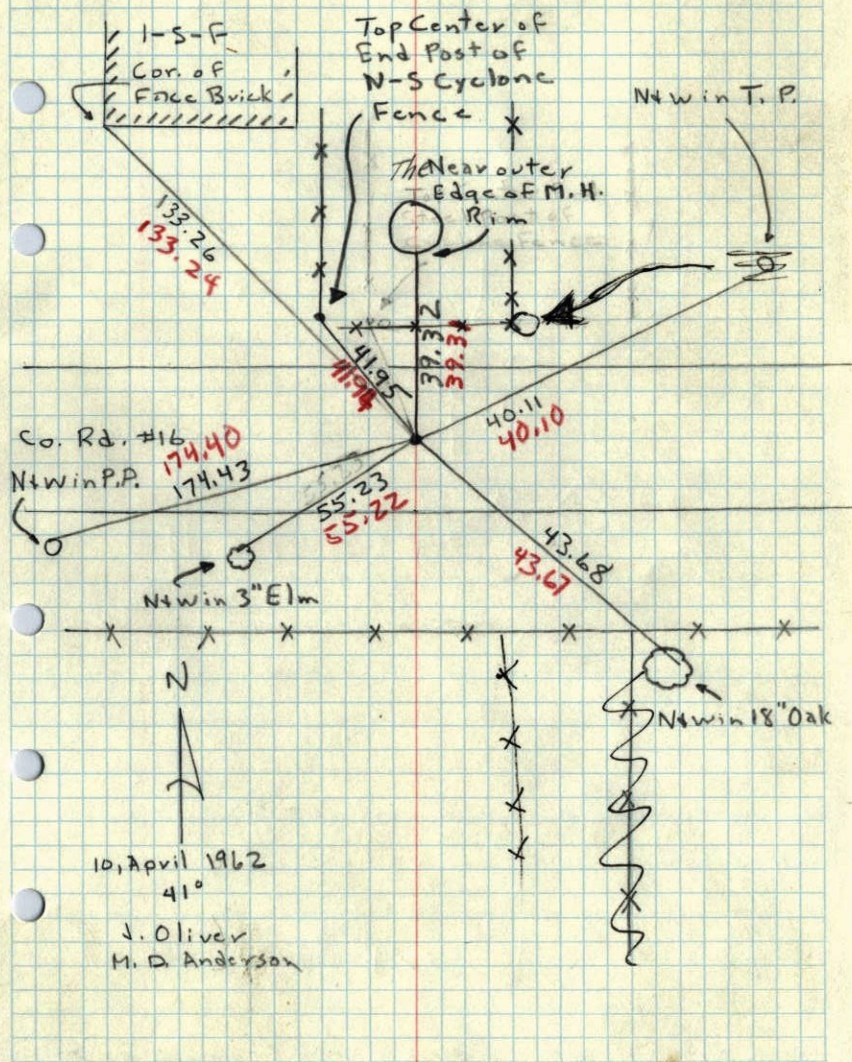
ROLAND W. ANDERSON  
COUNTY SURVEYOR  
ANOKA COUNTY, MINNESOTA

entered

1962

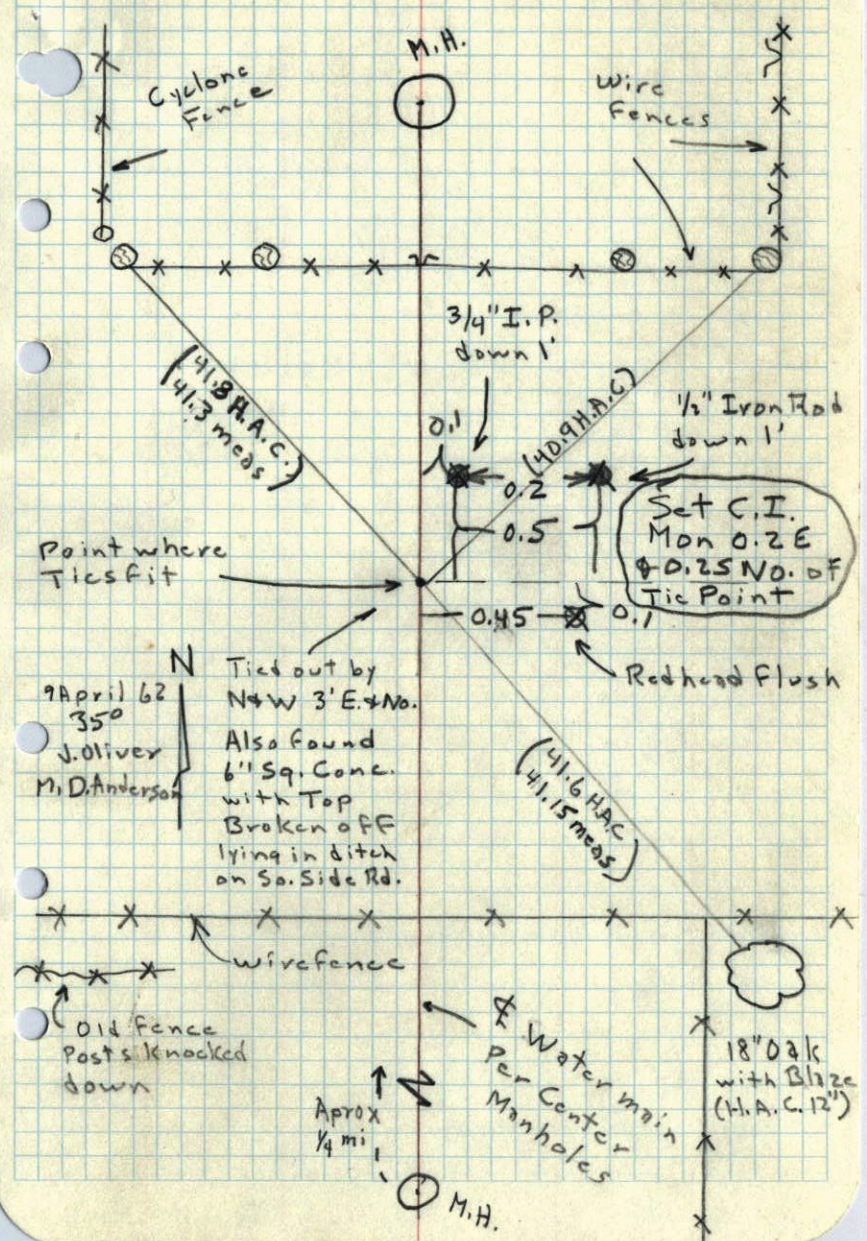
W 1/4 Cor. Sec. 26, T 31, R 22

Set C.I. Mon. - See Att. Sheet for details



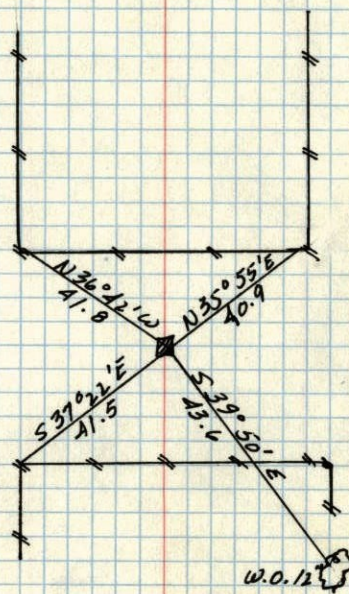
SETTING OF 1962

Sketch of W 1/4 Cor Sec 26, T 31, R 22



194236

W 1/4 SEC. 26, T31, R.22  
CONC. MON.



New Tics in  
New Tie Book

~~Conc. Gone  
& Tics Very Shaky  
will try & replace  
4/6/62  
JD~~

March 16, 1944  
CARTWRIGHT