

CERTIFICATE OF LOCATION OF GOVERNMENT CORNER

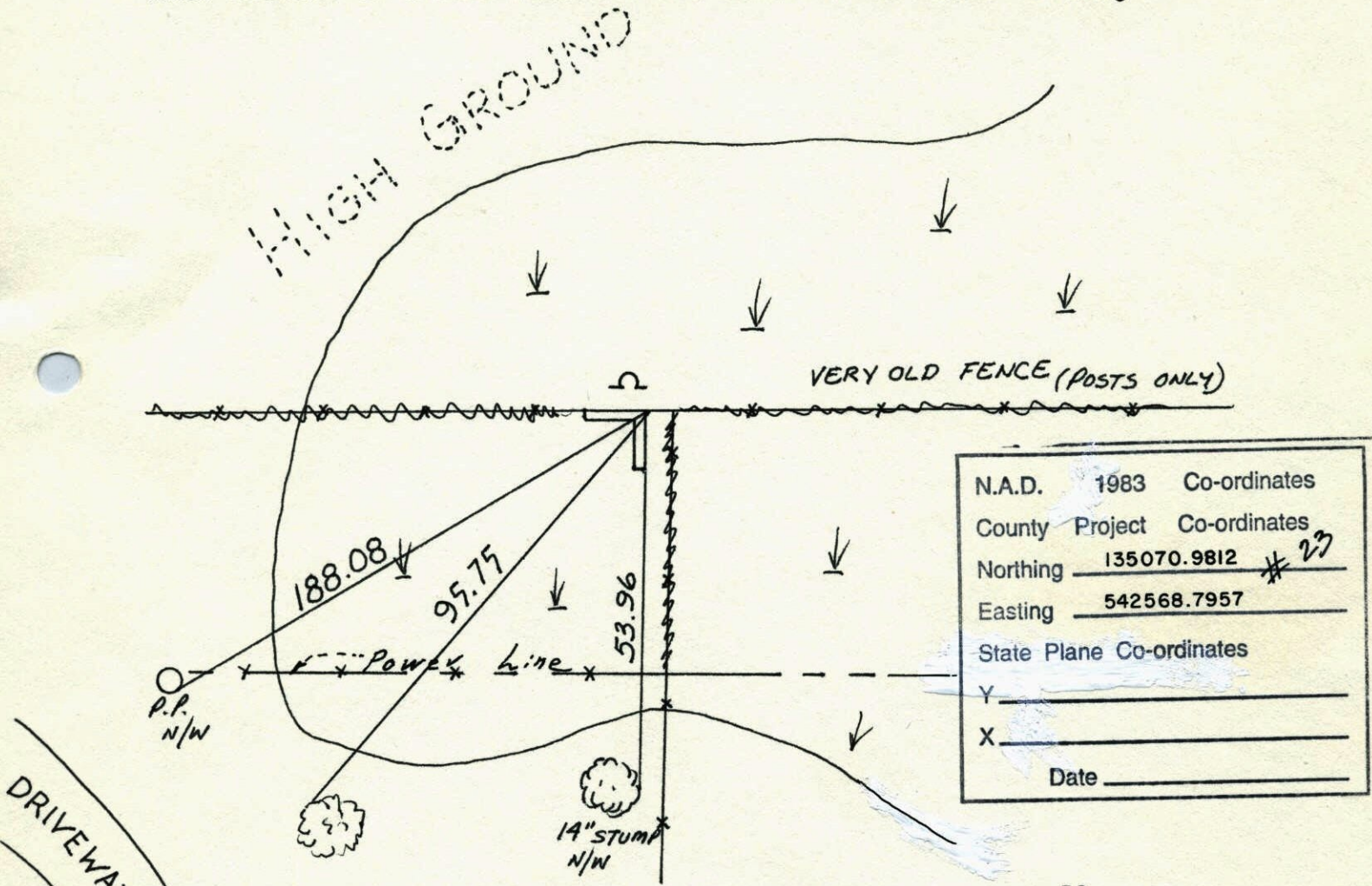
County of Anoka

State of Minnesota

WEST QTR. Corner of Sec. 33 Township 31 Range 22

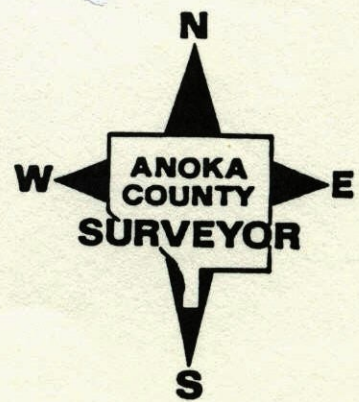
I hereby certify that on the 4 day of MAY, 1971, I found the described corner which was evidenced by 2" ANGLE IRON

and I further certify that to perpetuate the location of said corner, I did, at the exact location thereof, place a permanent marker consisting of 2" ANGLE IRON SET IN CONCRETE; SIGN AND POST NORTH SIDE which reference or witness monuments are located in the manner following:



N.A.D.	1983	Co-ordinates
County	Project	Co-ordinates
Northing	<u>135070.9812</u>	# <u>23</u>
Easting	<u>542568.7957</u>	
State Plane Co-ordinates		
Y	_____	
X	_____	
Date	_____	

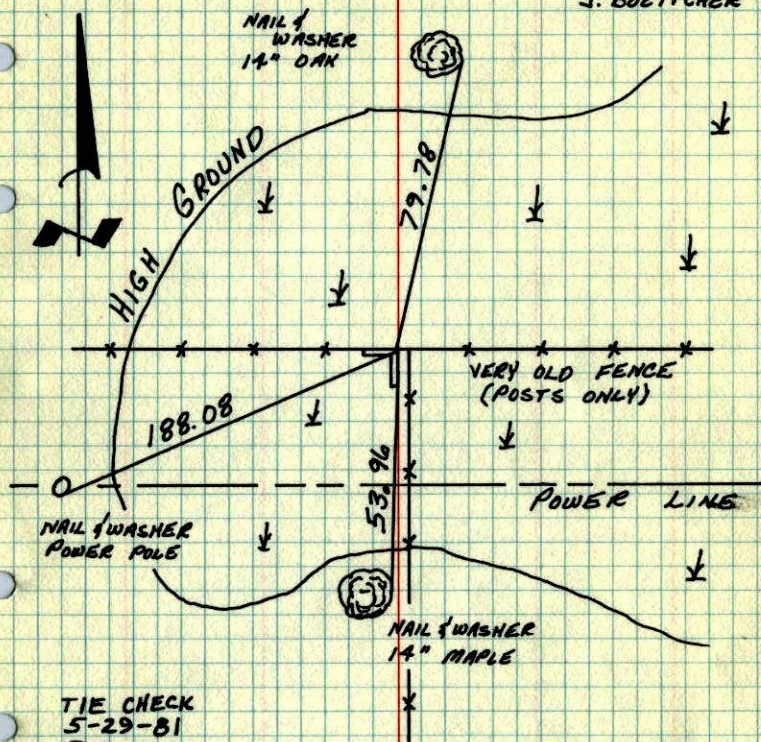
Revised date	Revised date	Revised date
<u>5-29-81</u>		
<u>7-28-86</u>		
<u>10-30-91</u>		
<u>6-20-96</u>		
<u>4-2-98</u>		



W 1/4 COR. SEC. 33 - T31 - R22

CHECKED AND TIED 2" ANGLE IRON SET IN
CONCRETE, FOUND BY MD. ANDERSON IN 1971.
SIGN AND POST ON NORTH SIDE.
USE POINT OF ANGLE IRON

6 JAN 78
H. LARSON
S. GUETZKO
J. BOETTCHER



TIE CHECK
5-29-81
P. ROSS
P. HORNBY

TEMPERATURE CORRECTED
AND HORIZONTALLY
TAPED MEASUREMENTS

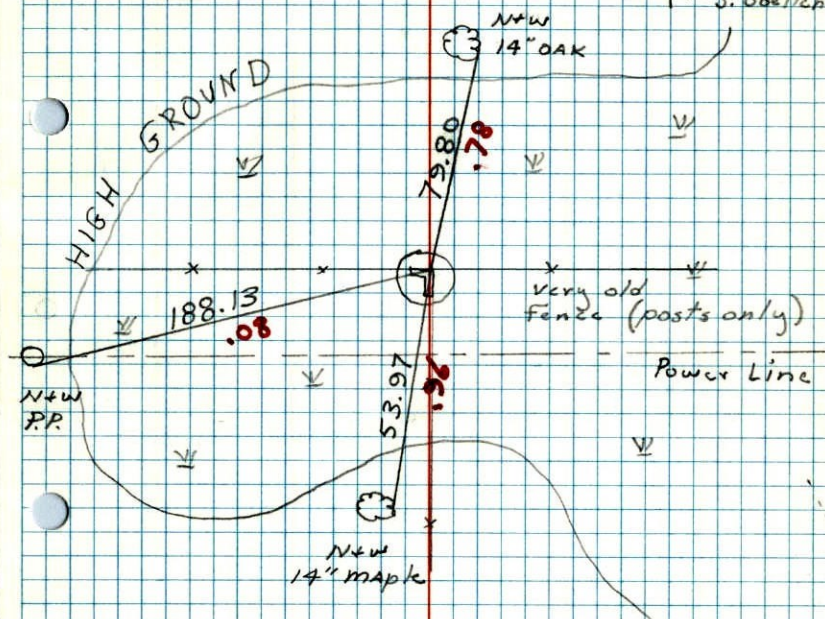
ROLAND W. ANDERSON
COUNTY SURVEYOR
ANOKA COUNTY, MINNESOTA

W 1/4 Cor. Sec. 33 T31 R22

Checked and Tied 2" Angle Iron set
in concrete Found by MD Anderson in
1971. Sign + post on North side

Use point of Angle Iron


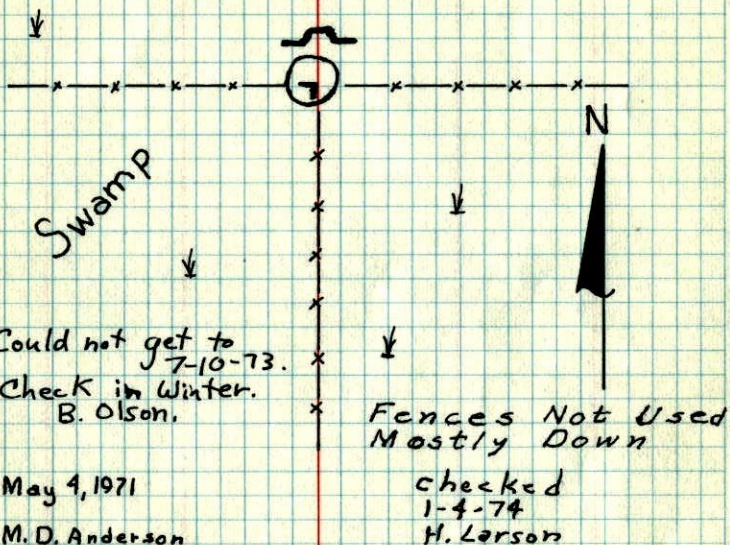
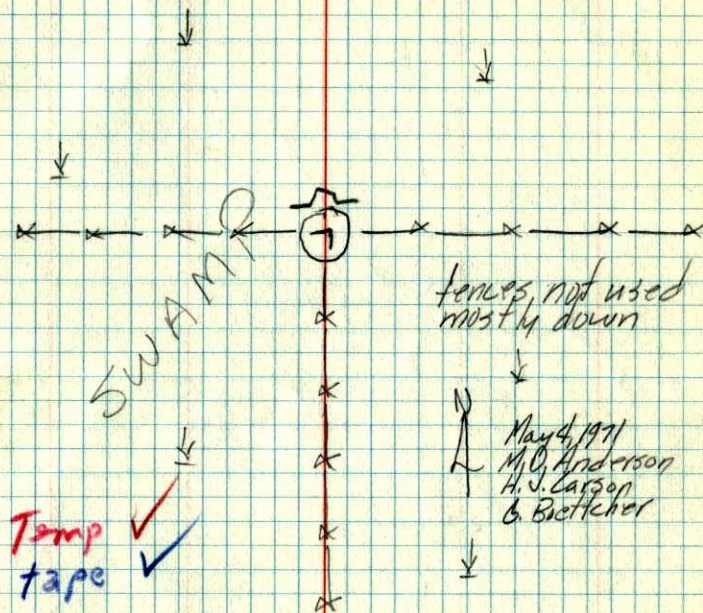
1-6-78
#7 26"
H. Larson
S. Guetzko
J. Boettcher



TEMPERATURE CORRECTED
AND HORIZONTALLY
TAPED MEASUREMENTS

ROLAND W. ANDERSON
COUNTY SURVEYOR
ANOKA COUNTY, MINNESOTA

W 1/4 Cor. Sec. 33-T31-R22

2" Angle Iron in Conc. Slab About 3'±
In Diam. Angle Iron Up 1'±Set Steel Signpost (On North Edge Of
Conc. Slab) With Warning Sign(Use Point Of Angle Iron) Retied & Redrawn
1-6-78 H. LarsonTEMPERATURE CORRECTED
AND HORIZONTALLY
TAPED MEASUREMENTSROLAND W. ANDERSON
COUNTY SURVEYOR
ANOKA COUNTY, MINNESOTAW 1/4 Cor. Sec. 33-T31-R22 ¹⁹⁷¹2" angle iron in Conc. Slab about 3'±
in diam. angle iron up 1'±Set steel sign post (on north edge
of Conc. slab) with warning sign(use point of angle iron) TEMPERATURE CORRECTED
AND HORIZONTALLY
TAPED MEASUREMENTSROLAND W. ANDERSON
COUNTY SURVEYOR
ANOKA COUNTY, MINNESOTA