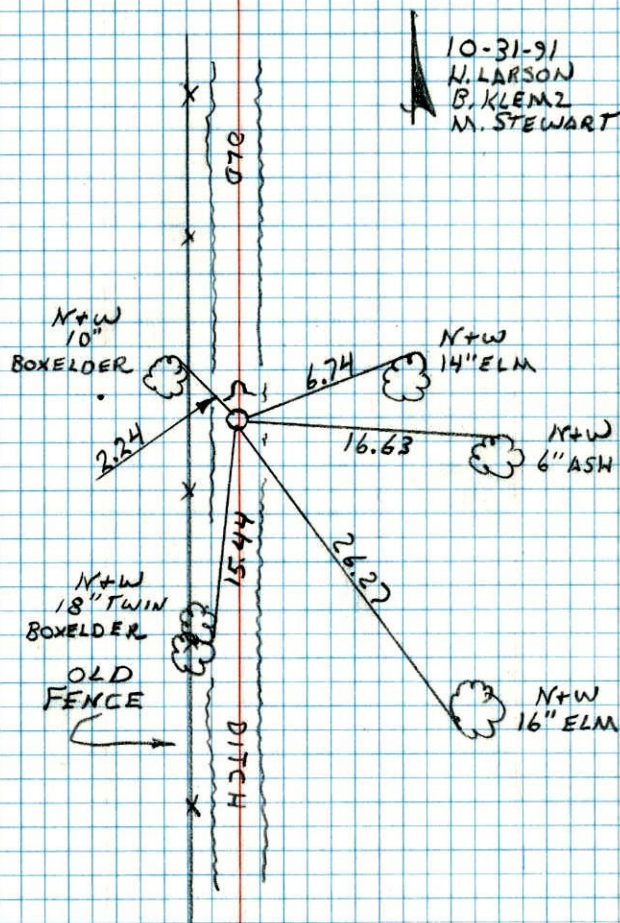


W.C. EASTLINE SEC. 33 T31 R22

RETIRED CAST IRON MONUMENT

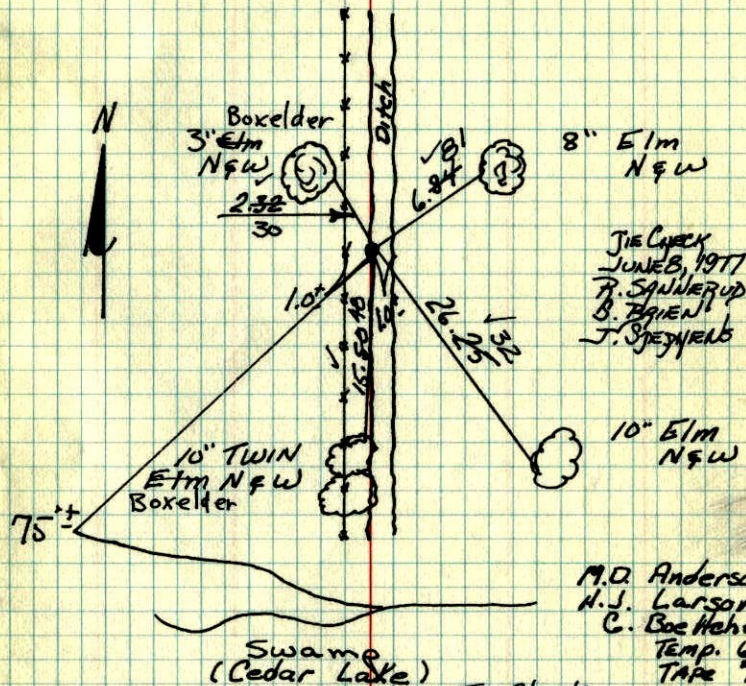
SIGN & POST ON NORTH SIDE



W.C. on E. line Sec 33-T31-R22

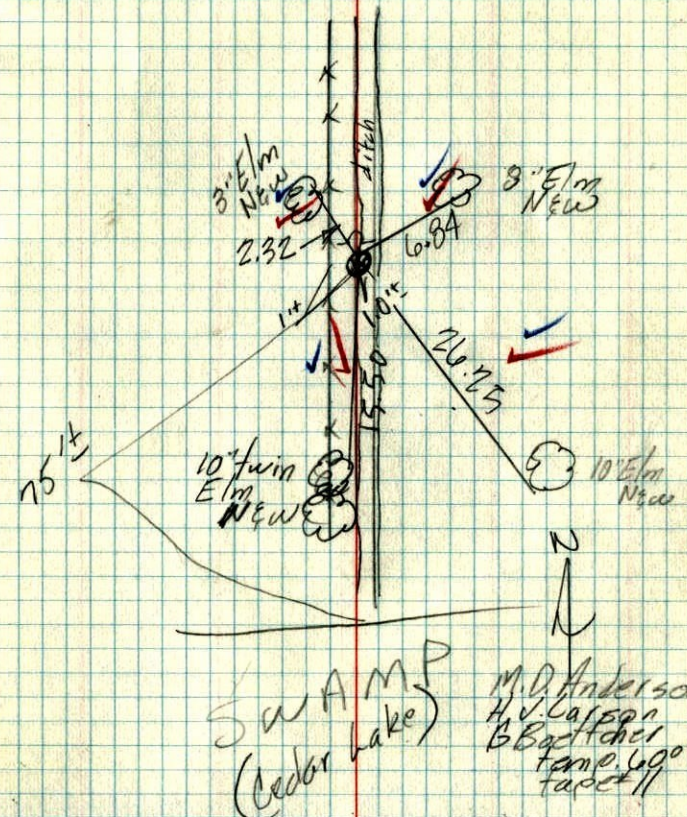
Distance 1686.294 ft. S. of N.E. Cor.

Set From Area Resurvey

Set Steel Sign Post & Warning $\frac{1}{2}$ ' ± N.Set C.I. Mon. From Area ResurveyTEMPERATURE CORRECTED
AND HORIZONTALLY
TAPED MEASUREMENTSROLAND W. ANDERSON
COUNTY SURVEYOR
ANOKA COUNTY, MINNESOTA

~~NO DATE~~

W.C. on E. line Sec. 35-T31-R22
distance 1686.294 ft. E. of N.E. Cor.
Set from area resurvey
Set steel sign post & warning $\frac{1}{2}$ " N.



TEMPERATURE CORRECTED
AND HORIZONTALLY
TAPED MEASUREMENTS

ROLAND W. ANDERSON
COUNTY SURVEYOR
ANOKA COUNTY, MINNESOTA