

CERTIFICATE OF LOCATION OF GOVERNMENT CORNER

County of Anoka

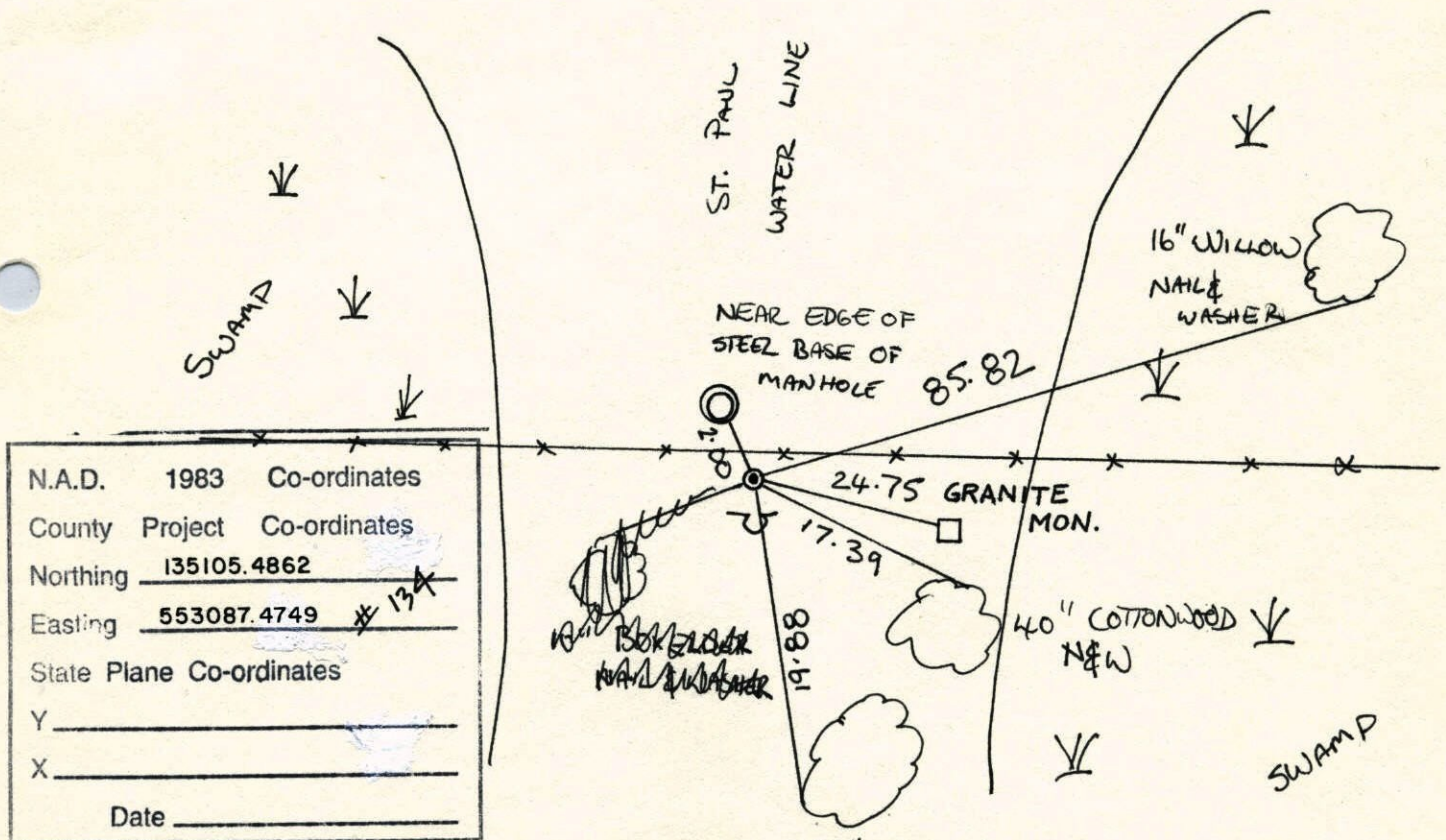
State of Minnesota

WEST QUARTER Corner of Sec. 35 Township 31 Range 22

I hereby certify that on the 13th day of SEPTEMBER, 1991, I found the described corner which was evidenced by GRANITE MONUMENT

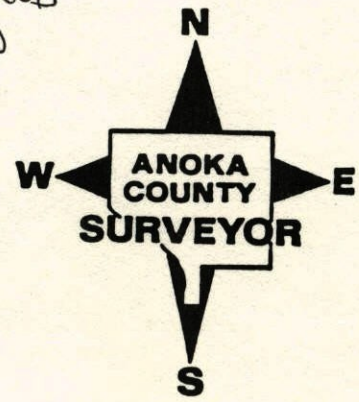
and I further certify that to perpetuate the location of said corner, I did, at the exact location thereof, place a permanent marker consisting of CAST IRON MONUMENT
WARNING SIGN & POST ON SOUTH SIDE

which reference or witness monuments are located in the manner following:



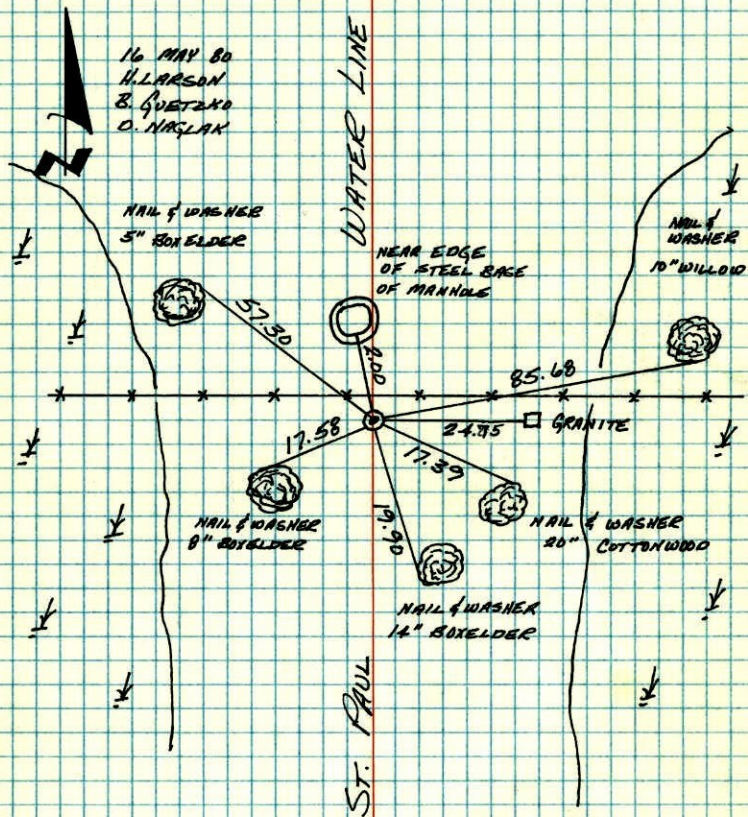
N.A.D.	1983	Co-ordinates
County	Project	Co-ordinates
Northing	<u>135105.4862</u>	
Easting	<u>553087.4749</u>	<u>13*</u>
State Plane Co-ordinates		
Y	_____	
X	_____	
Date	_____	

Revised date	Revised date	Revised date
5-16-80		
7-24-86		
11-13-91		
8-18-96		
4-6-98		



W 1/4 CORNER SECTION 35-T31-R22

FOUND 1/2" IRON PIPE AS W 1/4 CORNER REPLACED WITH CAST IRON MONUMENT. MONUMENT FLUSH WITH SIGN AND POST ON SOUTH SIDE. FOUND AND STRAIGHTENED GRANITE MONUMENT AS WITNESS CORNER TO W 1/4 CORNER.



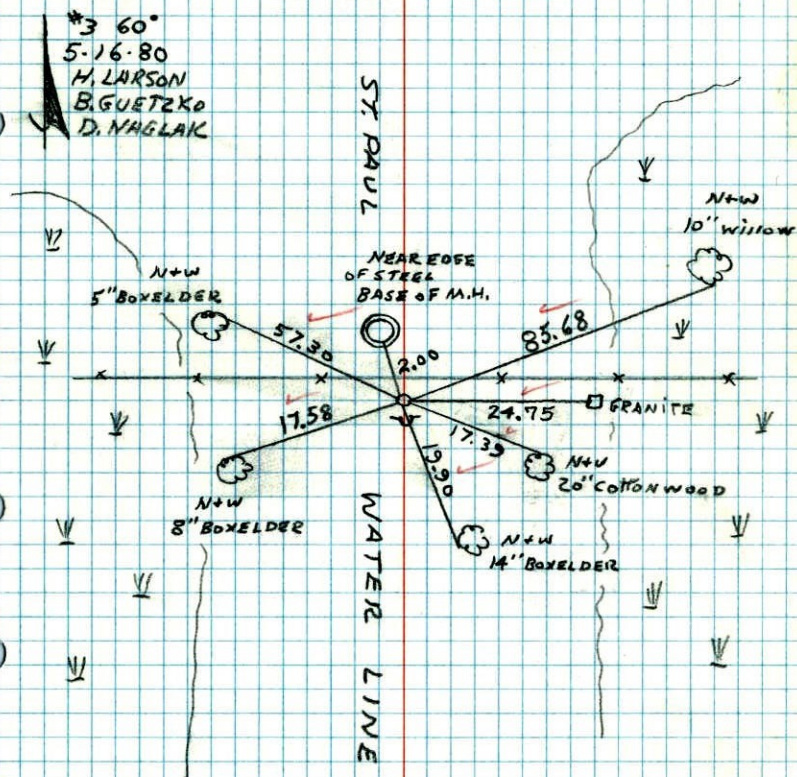
TEMPERATURE CORRECTED
AND HORIZONTALLY
TAPED MEASUREMENTS

ROLAND W. ANDERSON
COUNTY SURVEYOR
ANOKA COUNTY, MINNESOTA

W 1/4 COR. SECTION 35 T31 R22

FOUND 1/2" IRON PIPE AS W 1/4 COR. REPLACED WITH CAST IRON MONUMENT. MON. FLUSH WITH SIGN AND POST ON S. SIDE.

FOUND AND STRAIGHTENED GRANITE MON. AS W.C. TO W 1/4 COR.



TEMPERATURE CORRECTED
AND HORIZONTALLY
TAPED MEASUREMENTS

ROLAND W. ANDERSON
COUNTY SURVEYOR
ANOKA COUNTY, MINNESOTA

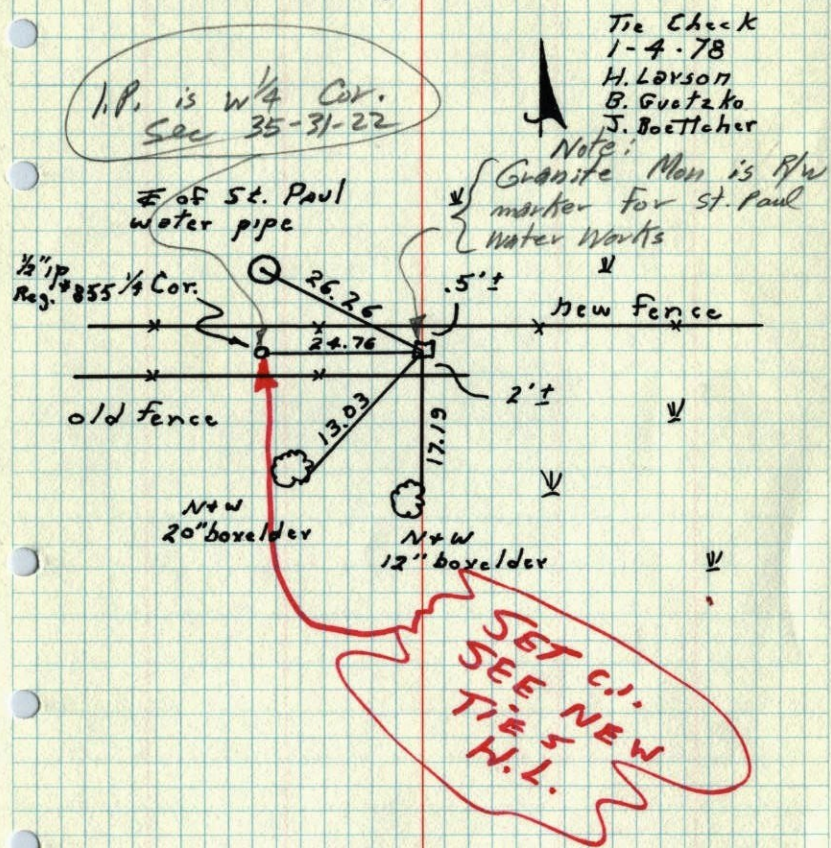
W 1/4 Cor. Section 35 T31 R22

Tied Granite Monument Found

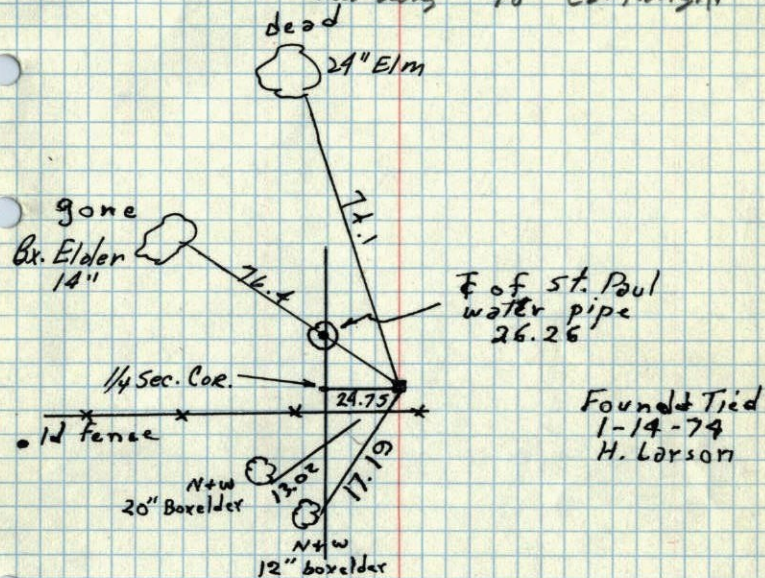
by H. Cartwright in 1946

Relocated in 1974 by H. Larson

Granite Leaning East.

TEMPERATURE CORRECTED
AND HORIZONTALLY
TAPED MEASUREMENTSROLAND W. ANDERSON
COUNTY SURVEYOR
ANOKA COUNTY, MINNESOTA

W 1/4 SEC 35, T31, R22

GRANITE MONUMENTI.P. is the
W 1/4 of Sec 35-31-22
according to Cartwright notesChecked +
Redrawn
1-4-78

Check in winter

SEPT 13, 1946
CARTWRIGHT

W $\frac{1}{4}$ cor. sec. 35 T 31 R 22

R.P.s to witness Cor. 24.75'

E. of W $\frac{1}{4}$ cor.

24" Blm
D 24.1
NW
H "Boaldor
D 26.9
W-NW - Granite

Note:

Granite marks the R/W of
St. Paul. Water Works

I. P. is the W $\frac{1}{4}$ Cor Sec 35