

CERTIFICATE OF LOCATION OF GOVERNMENT CORNER

County of Anoka

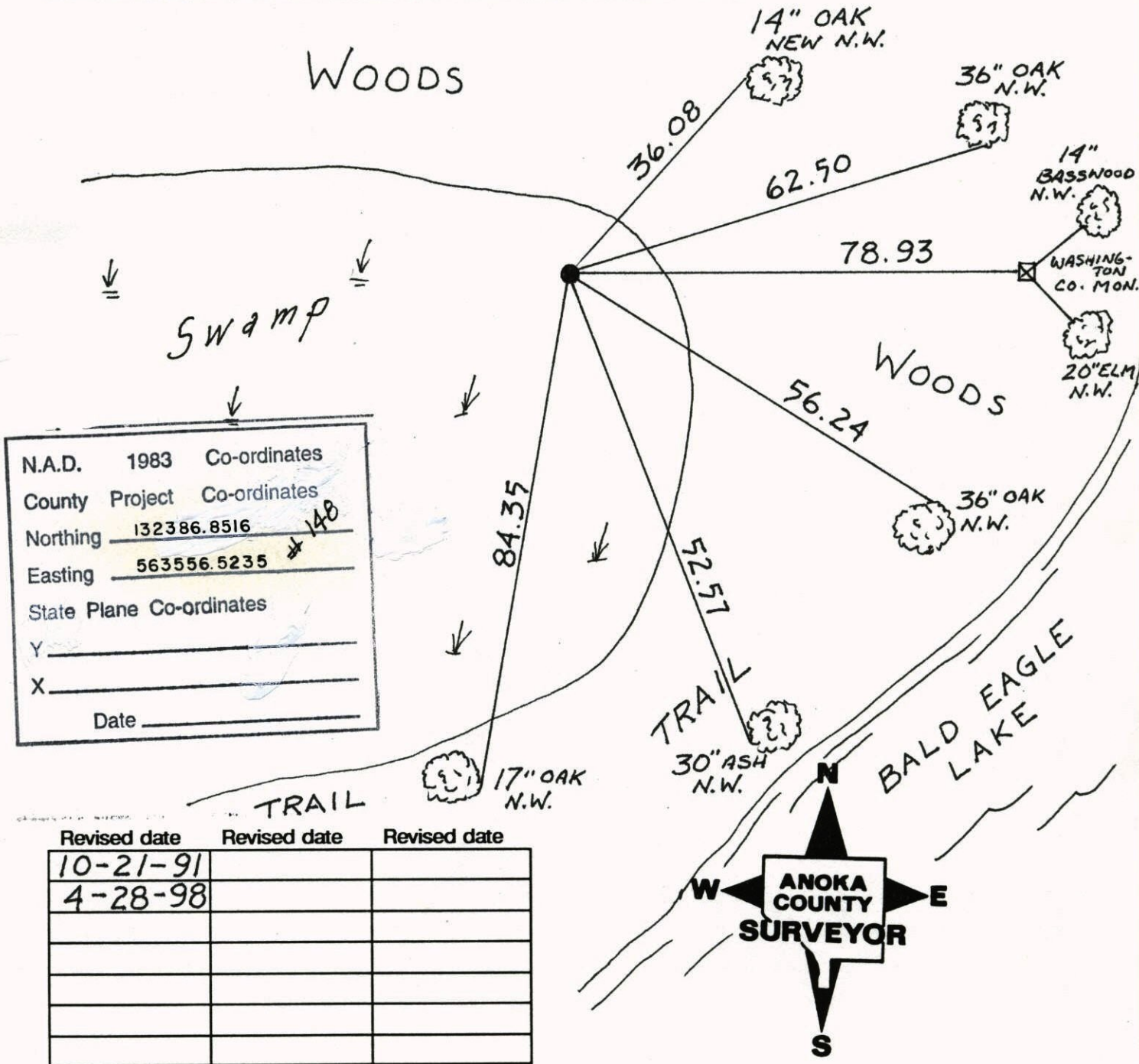
State of Minnesota

SOUTHEAST Corner of Sec. 36 Township 31 Range 22

I hereby certify that on the 15 day of JULY, 1960, I found the described corner which was evidenced by _____

and I further certify that to perpetuate the location of said corner, I did, at the exact location thereof, place a permanent marker consisting of RED AND WHITE IRON PIPE

which reference or witness monuments are located in the manner following:



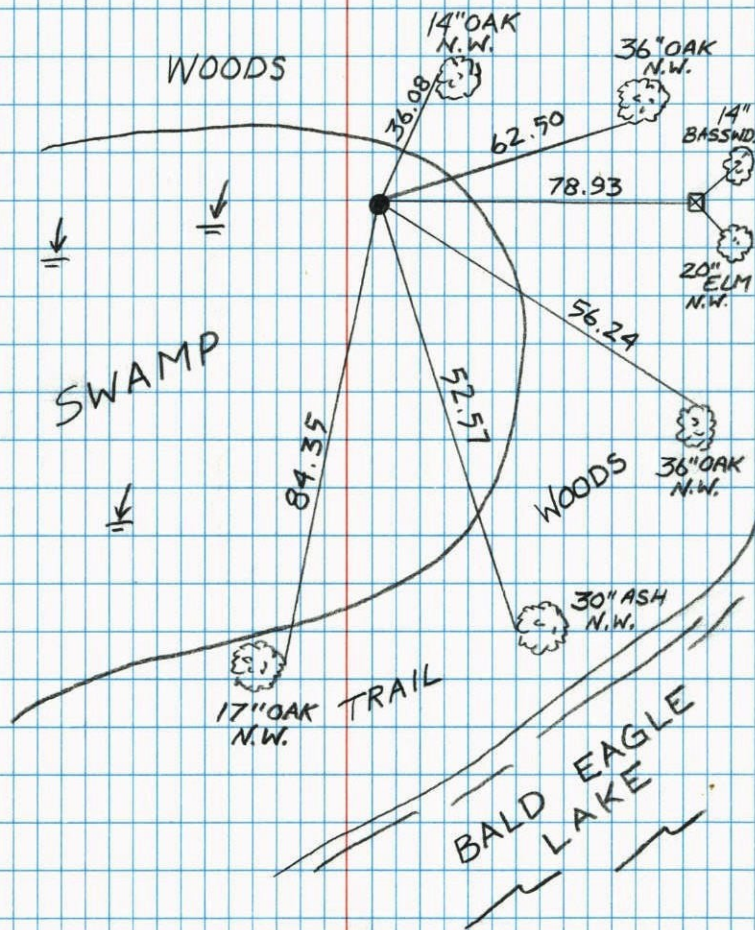
SOUTHEAST COR. S. 36 T31 R22

RETIED RED AND WHITE I. P.

4-28-98

H. LARSON

B. KLEMMZ



NO. 446

NATIONAL PRINTFAST

S.E. COR. SEC. 36-T31-R22

SET AND TIED RED & WHITE IRON PIPE INPLACE OF $\frac{1}{2}$ " IRON ROD. MAY 4, '77

CHECKED FOR MOVEMENT OF WASHINGTON COUNTY

GRANITE MONUMENT WITNESS CORNER AND

ADDED TIES TO SHEET FOR REFERENCE.

GRANITE HAS MOVED N.W. APPROXIMATELY .2' ±

(SIMONET DISTANCES)

JULY 13, 1977

★ RESET I.P. 8-19-80

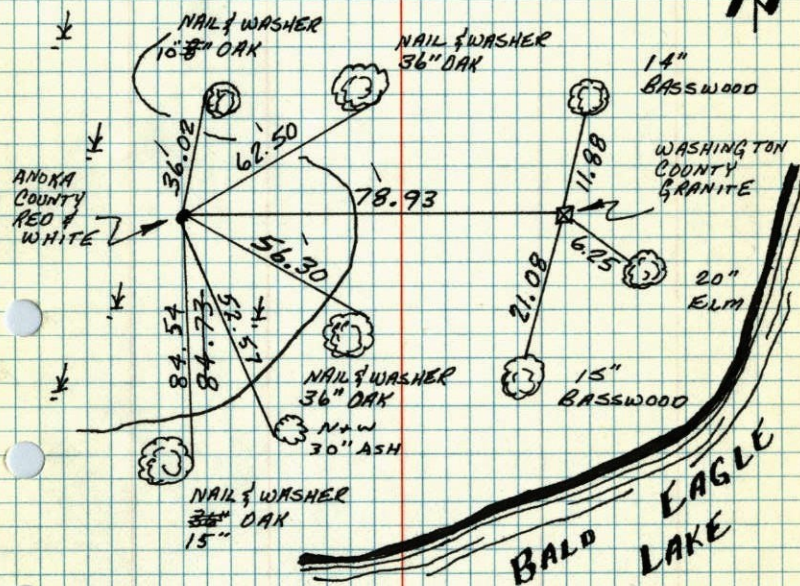
H. LARSON

H. LARSON B. GUETZKO

B. GUETZKO

D. NAGELAK

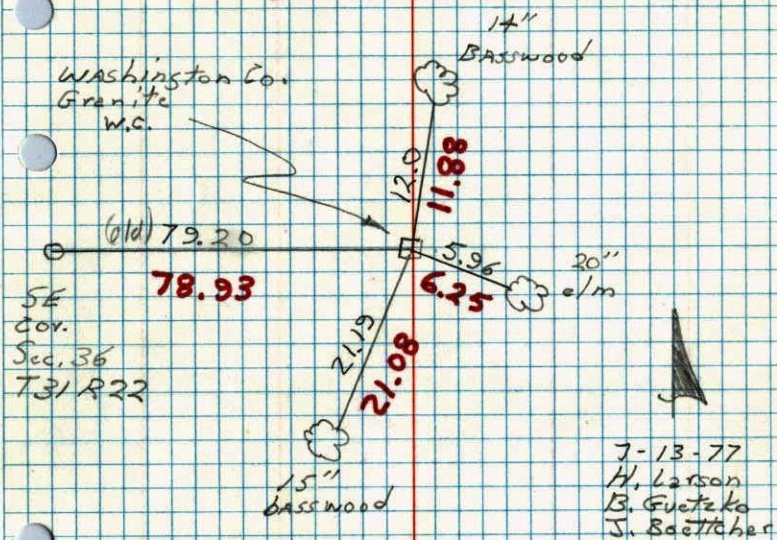
J. BOETTCHER

TEMPERATURE CORRECTED
AND HORIZONTALLY
TAPED MEASUREMENTSROLAND W. ANDERSON
COUNTY SURVEYOR
ANOKA COUNTY, MINNESOTA

Check for movement of Wash. Co.
Granite. W.C. by SE Cor. Sec. 36 T31 R22

Granite has move N.W. approx. .2 ±
-Simonet dists-

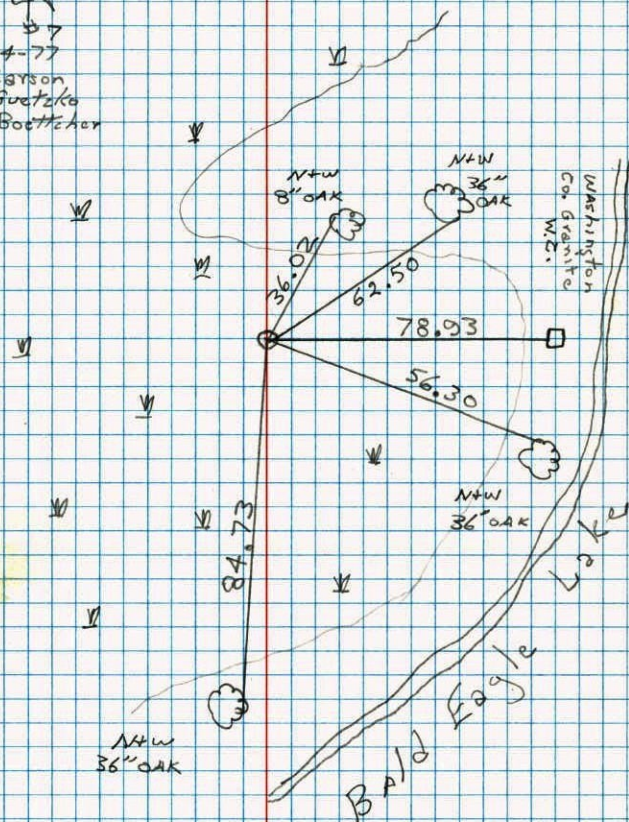
**Anoka Co. Fair
dist.s**



SE Cor. Sec. 36 T31 R22

Set red and white iron pipe in place
of 1/2" iron rod.

60° 57
5-4-77
H. Larson
B. Guetzko
J. Boettcher

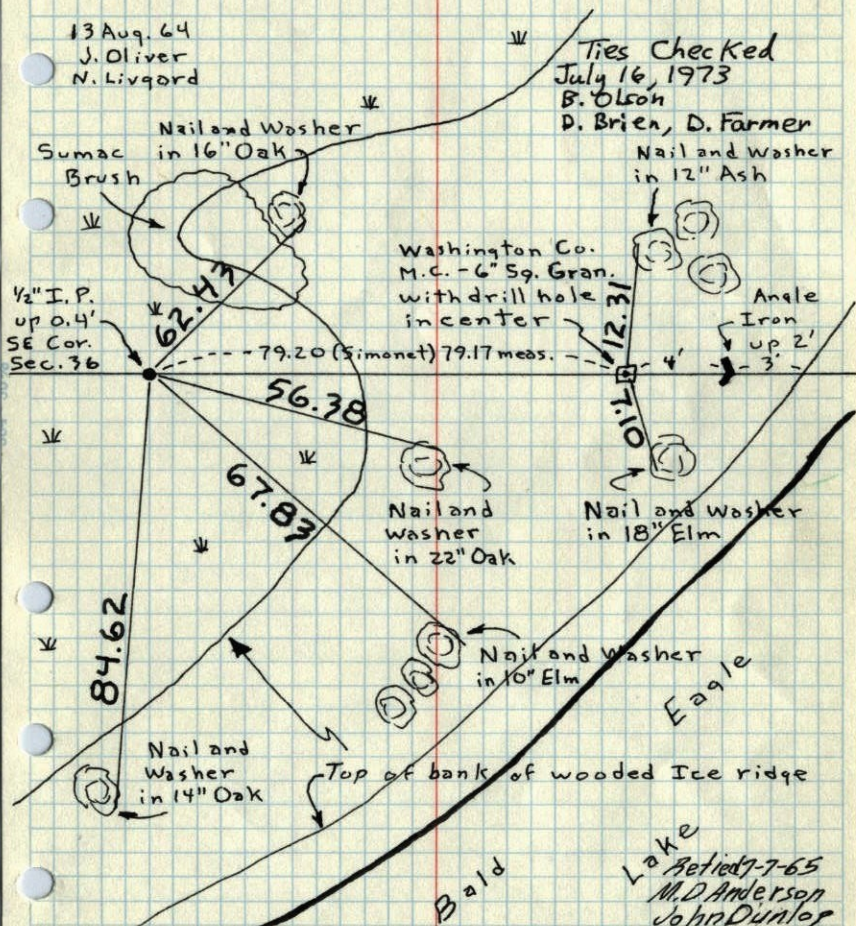


SE Cor. Sec. 36, T31, R22

Found 1/2" Iron Pipe up 0.4', set by Jim Simonet
at Govt. dist. (1.20 ch.) From Granite Monument
Meander Corner on shore of Bald Eagle Lake.

13 Aug. 64
J. Oliver
N. Livgard

Ties Checked
July 16, 1973
B. Olson
D. Brien, D. Farmer
Nail and Washer
in 12" Ash



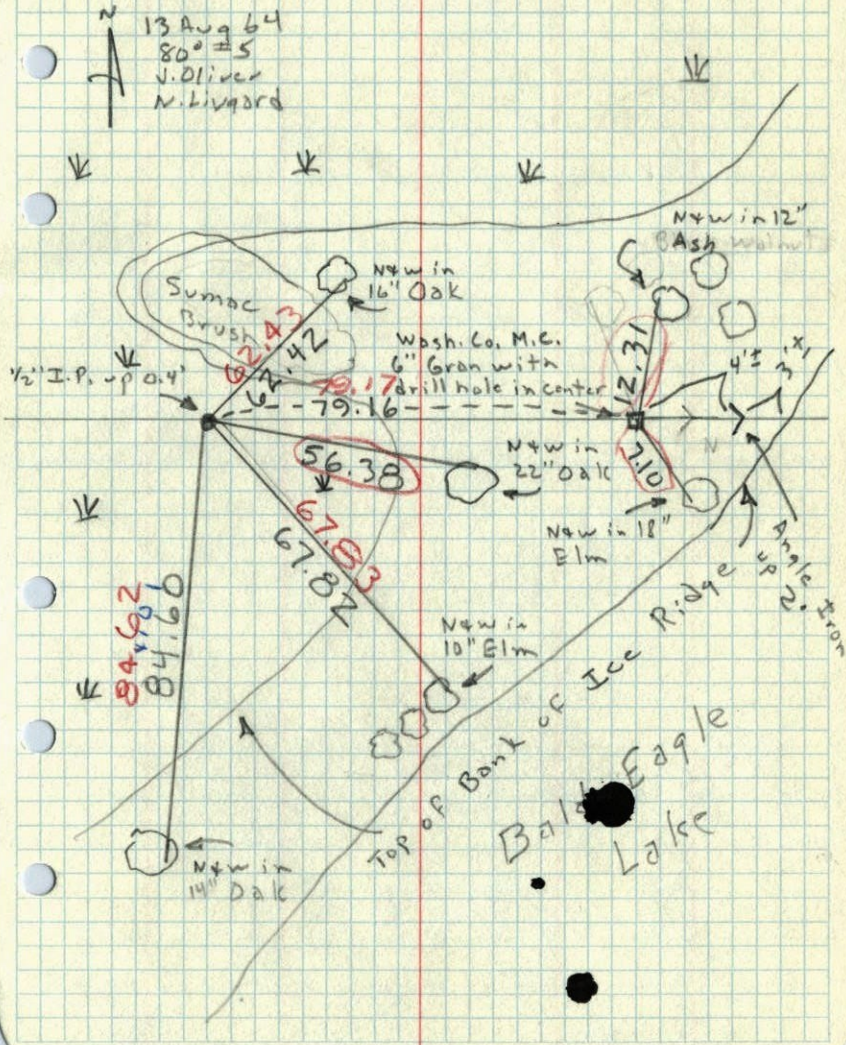
TEMPERATURE CORRECTED ROLAND W. ANDERSON
AND HORIZONTALLY COUNTY SURVEYOR
TAPED MEASUREMENTS ANOKA COUNTY, MINNESOTA

Lake
Retied 7-7-65
M.D. Anderson
John Dunlop

SE Cor. Sec. 36, T31, R22

Found 1/2" I.P. up 0.4' Set by Jim Simonet
at Govt. dist. (1.20 ch.) From Gran. Monument
M.C. on Shore of Bald Eagle Lake

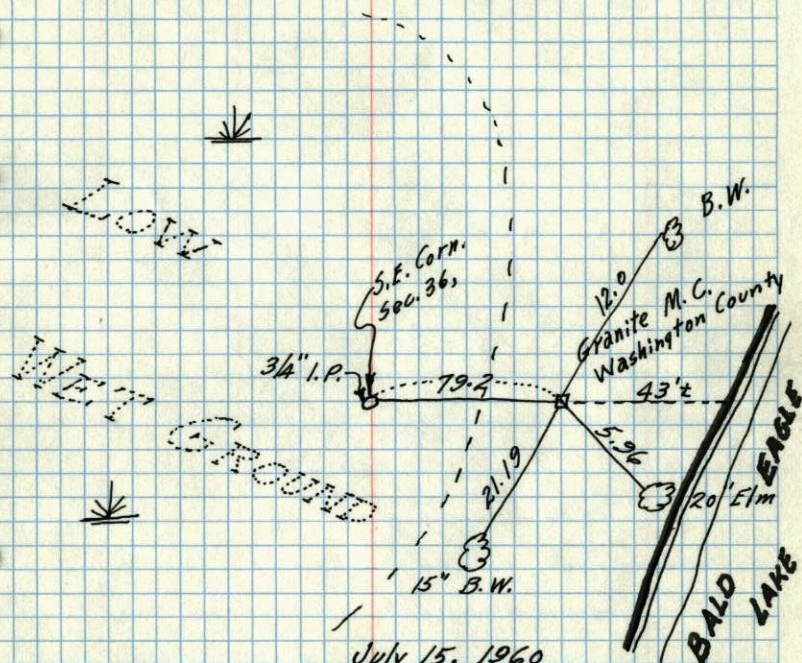
13 Aug 64
80° ± 5
J. Oliver
N. Livgard



Bald Eagle
Lake

1960 51

S.E. Corn. Sec. 36, T31, R22



July 15, 1960

James F. Simonet set I.P. for
Sec. Corn. at Gov't. distance of 1.20 chains
on line to West. I will prove this by
measuring line and check by proration later.

R.W.A.