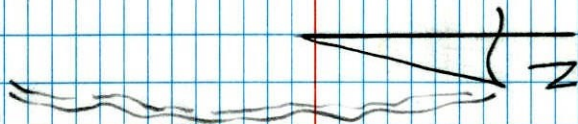
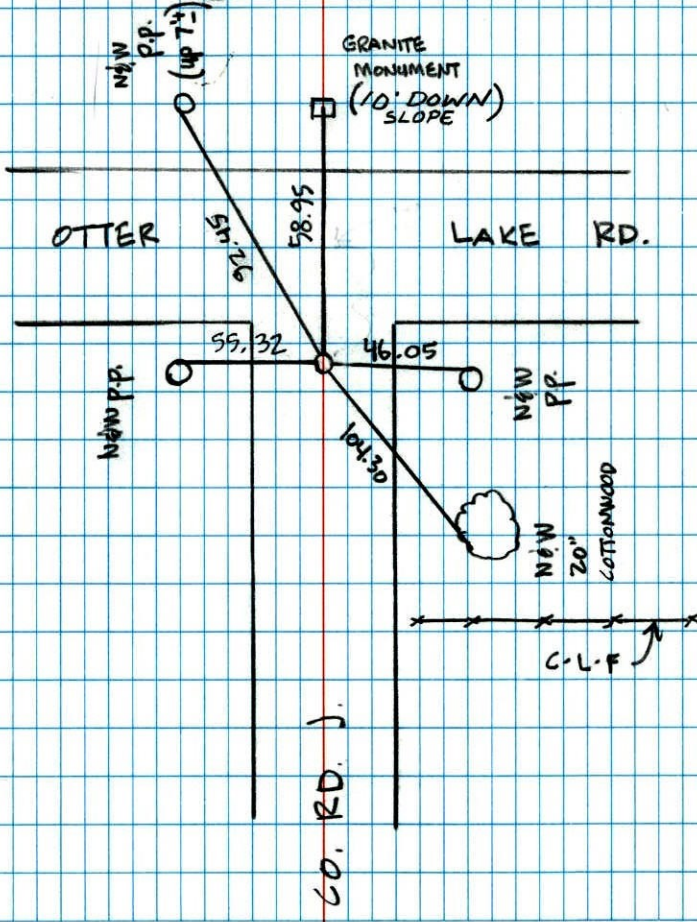


WITNESS COR SEC 35 T 31 R 22
SET CAST IRON IN BLKTOP

OTTER LAKE



J. SIMMER
B. KLEMMZ



NO. 446

NATIONAL PRINTING

CERTIFICATE OF LOCATION OF GOVERNMENT CORNER

County of Anoka

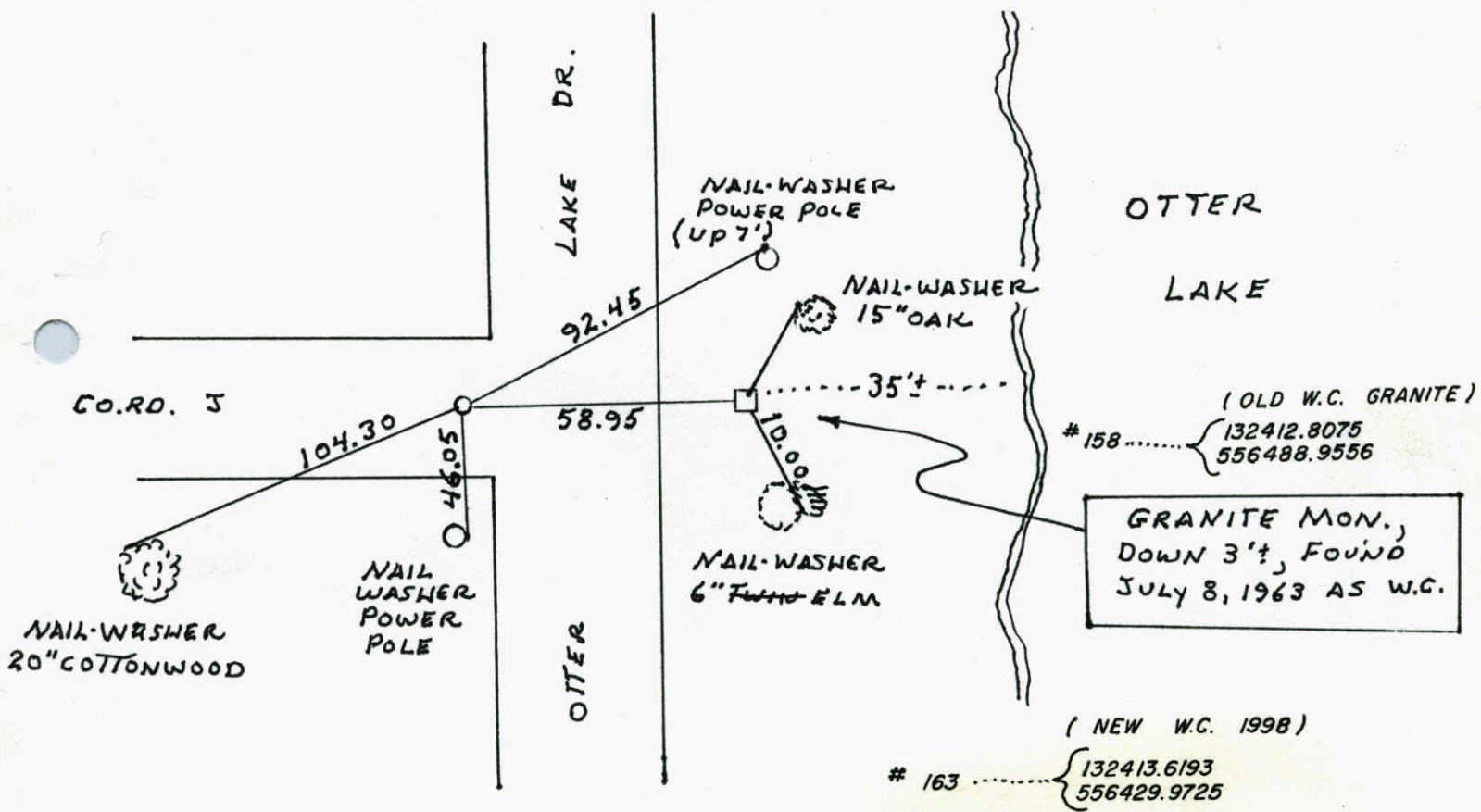
State of Minnesota

WITNESS Corner of Sec. 35 Township 31 Range 22
ON S. LINE OF SE 1/4

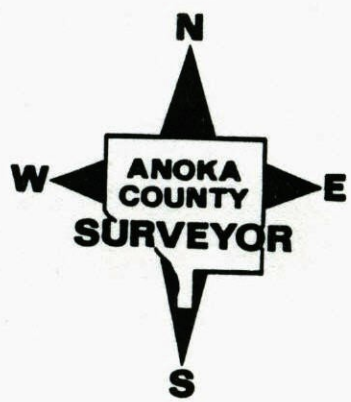
I hereby certify that on the 6 day of JULY, 1998, I found the described corner which was evidenced by AREA RESURVEY

and I further certify that to perpetuate the location of said corner, I did, at the exact location thereof, place a permanent marker consisting of CAST IRON MONUMENT

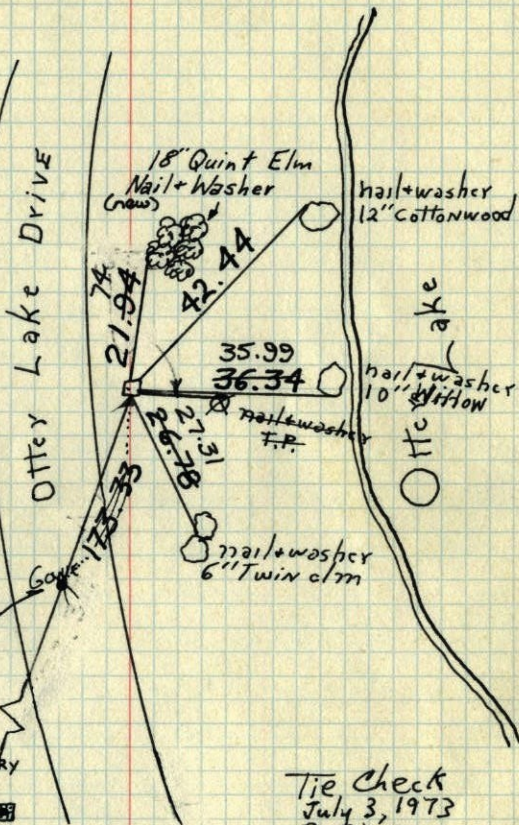
which reference or witness monuments are located in the manner following:



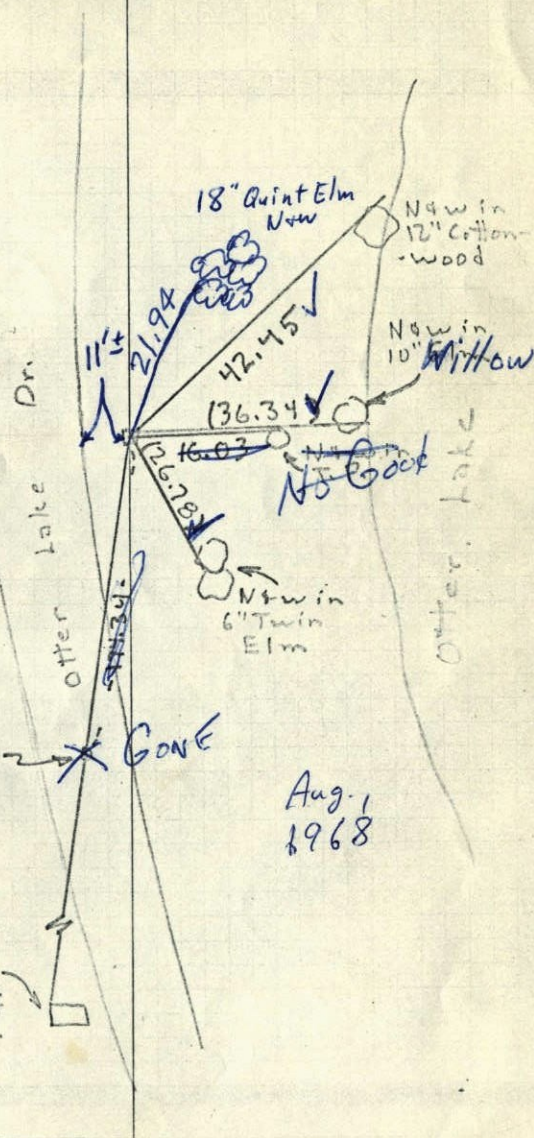
Revised date	Revised date	Revised date
7-6-98		



M.C. #31 on So. Line Sec. 35 T31 R22

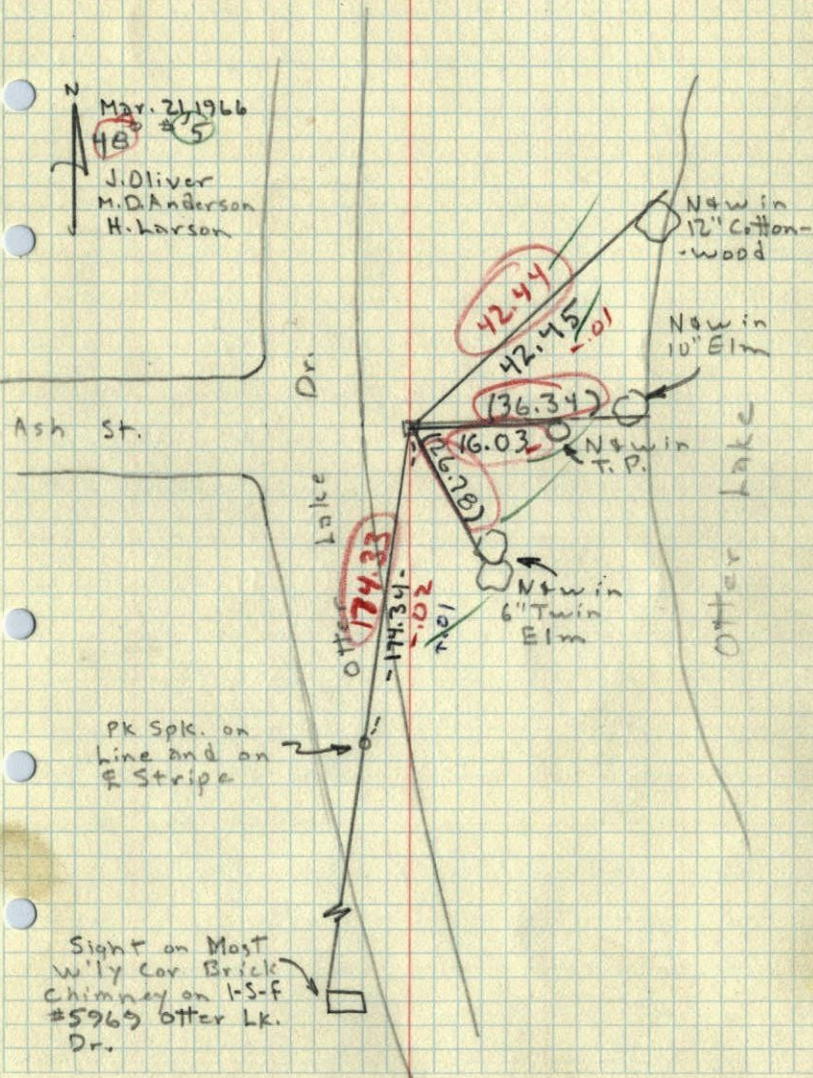
Took additional Ties To granite monument
because of road construction.Mar. 21, 1966
J. Oliver
M.D. Anderson
H. LarsonAsh St.
(County Line No.)PK spk. on
line and on E
Stripe.Sight on most w. ry
cov. brick chimney
on I-S-F #5969
Otter Lk. Drive.Ties Checked
Aug. 1, 1968
D. Powell
R. OlsonTEMPERATURE CORRECTED
AND HORIZONTALLY
TAPED MEASUREMENTSTie Check
July 3, 1973
B. Olson
D. Brien
D. FarmerTIE CHECK
JUNE 8, 1977
R. SANNERUD
S. BRIEN
J. STEPHENSROLAND W. ANDERSON
COUNTY SURVEYOR
ANOKA COUNTY, MINNESOTA

M.C. #31 on So. line Sec. 35, T31, R22

Took additional ties to Gran. Mon. because
of road const.Mar. 21, 1966
48° 25'J. Oliver
M.D. Anderson
H. LarsonAsh St.
(County Line No.)PK Spk. on
line and on
E StripeSight on Most
w. ry cov. Brick
Chimney on I-S-F
#5969 Otter Lk.
Dr.Aug. 1
1968

1966

M.C. #31 on So. line Sec. 35, T.31, R.22
Took additional ties to Gran. Mon. because
of road const.



Mar. 21, 1966

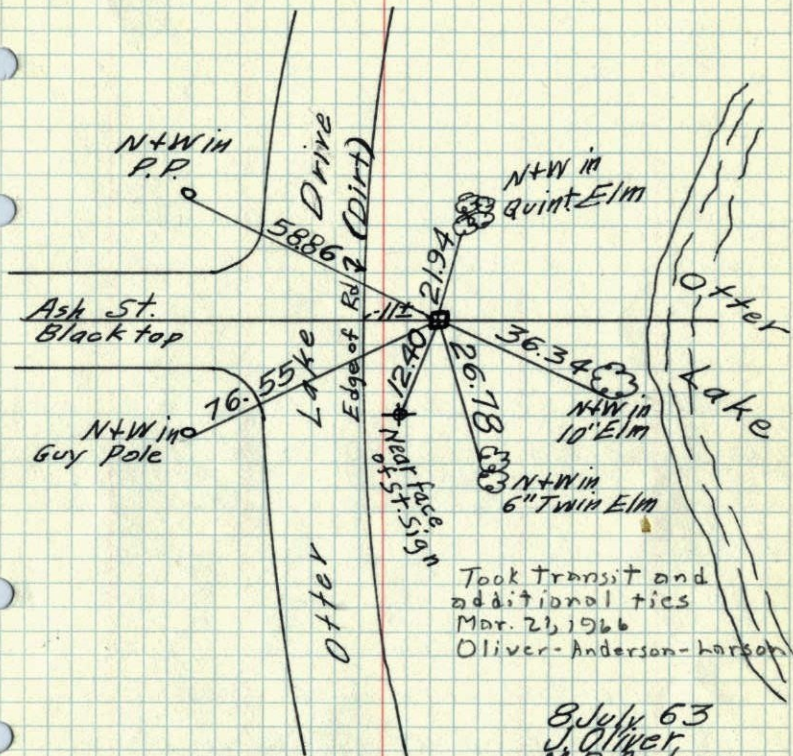
45 #5

J. Oliver
M.D. Anderson
H. Larson

1965 77

M.C. #31 on Saline Sec. 35, T.31, R.22
Found 8" Sq. Granite Mon. with drill hole in
center down 1' (No line NE 1/4 Sec. 4, T.30, R.22,
Ramsey Co. M.C. #19)

Cor. in bottom of
2' deep hole



8 July 63

J. Oliver
M.D. Anderson
R. Carlson

TEMPERATURE CORRECTED
AND HORIZONTALLY
TAPED MEASUREMENTS

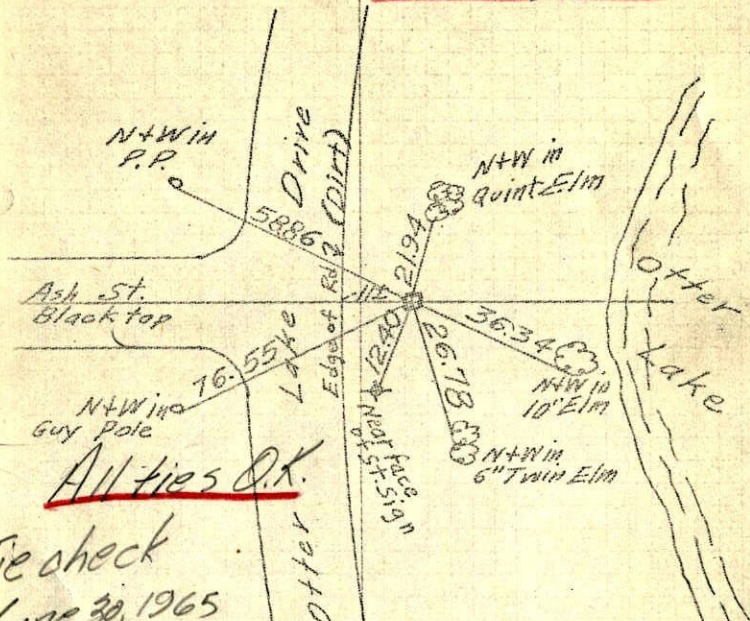
Retied 6-30-65
M.D. Anderson
John Dunlop

ROLAND W. ANDERSON
COUNTY SURVEYOR
ANOKA COUNTY, MINNESOTA

1965
77

M.C. #31 on Saline Sec. 35, T. 31, R. 22
Found 8" Sq. Granite Mon. with drill hole in
center down 1' (No. line NE 1/4 Sec. 4, T. 30, R. 22,
Ramsey Co. M.C. #19)

cor. in bottom of
2' deep hole



All ties O.K.

Tie check
June 30, 1965
M.D. Anderson
J. Danlop

TEMPERATURE CORRECTED
AND HORIZONTALLY
TAPED MEASUREMENTS

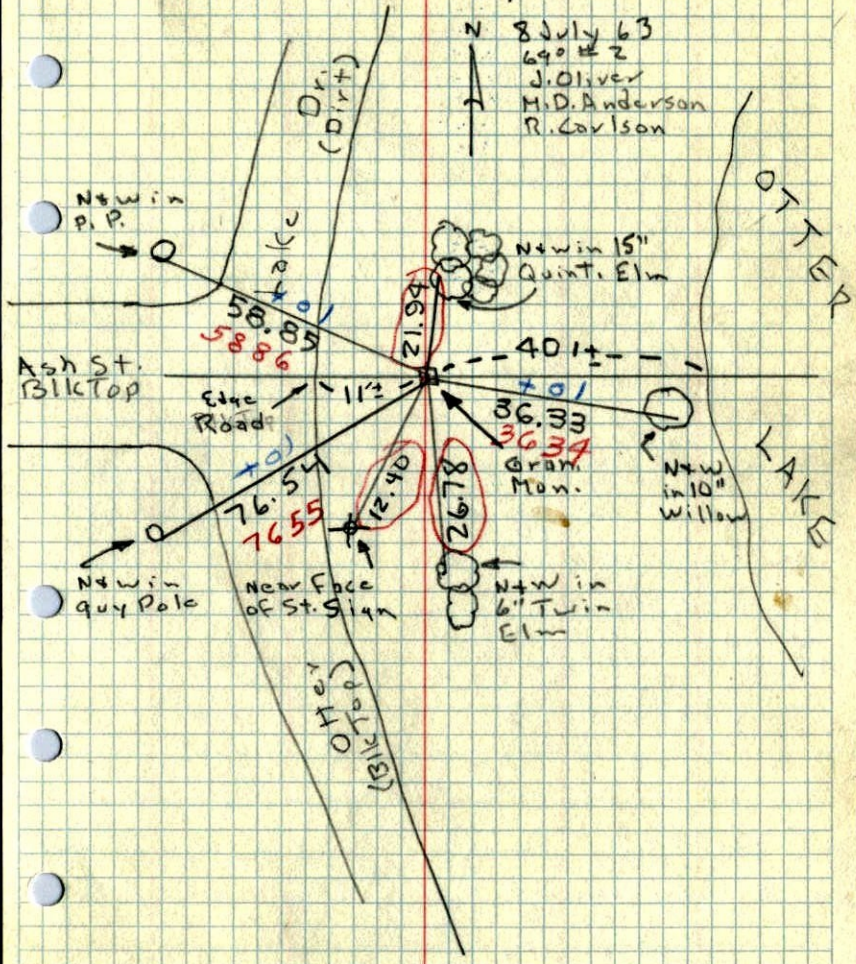
ROLAND W. ANDERSON
COUNTY SURVEYOR
ANOKA COUNTY, MINNESOTA

8 July 63
J. Oliver
M.D. Anderson
R. Carlsson

1963

M.C. #31
M.C. on So. line Sec. 35, T. 31, R. 22
Found 8" Sq. Granite Mon. with drill hole
in center down 1' (No. line NE 1/4 Sec.
4, T. 30, R. 22, Ramsey Co. M.C. #19)

N 8 July 63
690 #2
J. Oliver
M.D. Anderson
R. Carlsson



OTTER LAKE