

CERTIFICATE OF LOCATION OF GOVERNMENT CORNER

County of Anoka

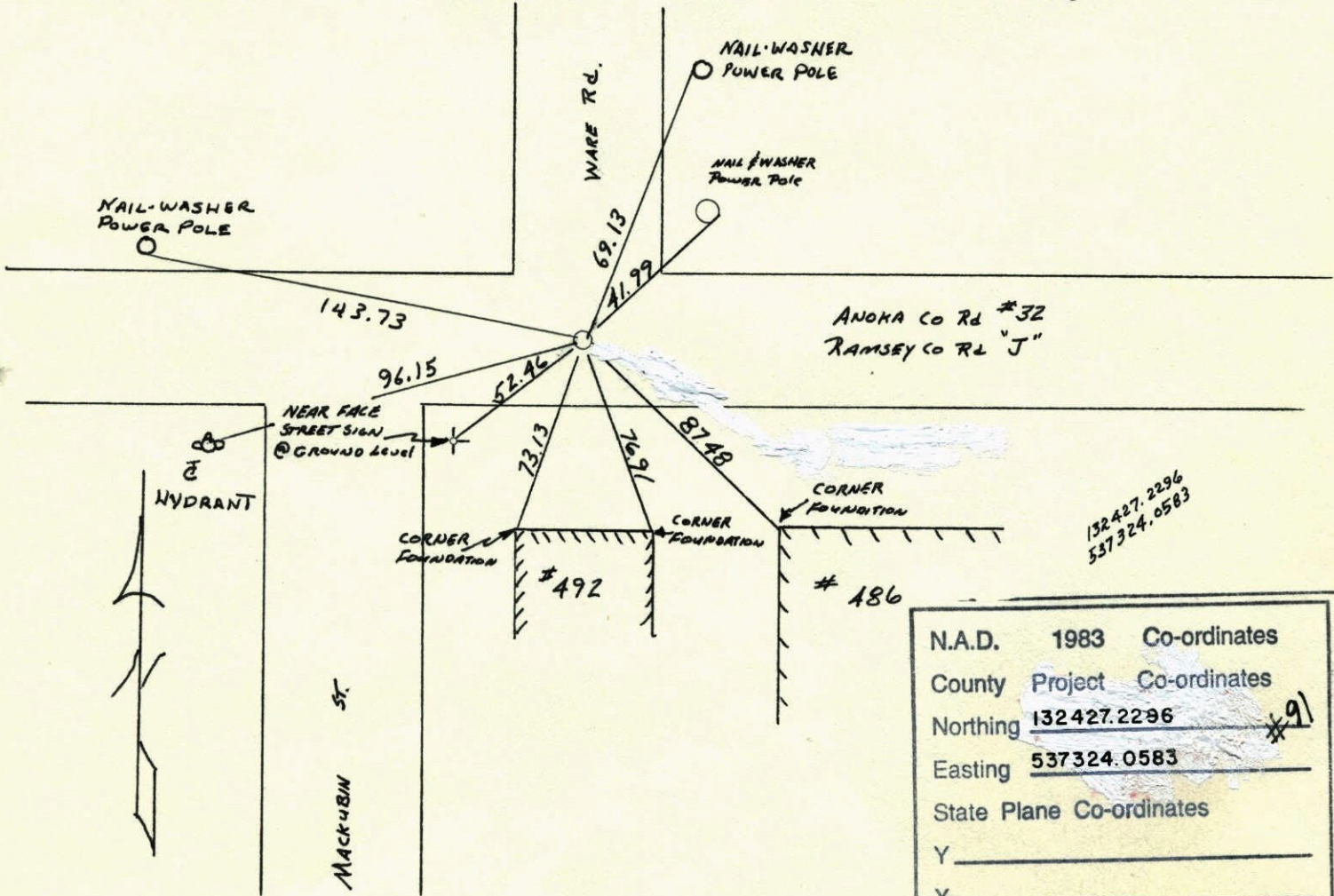
State of Minnesota

SOUTH EAST Corner of Sec. 31 Township 31 Range 22

I hereby certify that on the 9TH day of APRIL, 1962, I found the described corner which was evidenced by 4" SQUARE CONCRETE MONUMENT

and I further certify that to perpetuate the location of said corner, I did, at the exact location thereof, place a permanent marker consisting of CAST IRON MONUMENT ON TOP OF BROKEN OFF 4" SQUARE CONCRETE MONUMENT

which reference or witness monuments are located in the manner following:



132427.2296
537324.0583

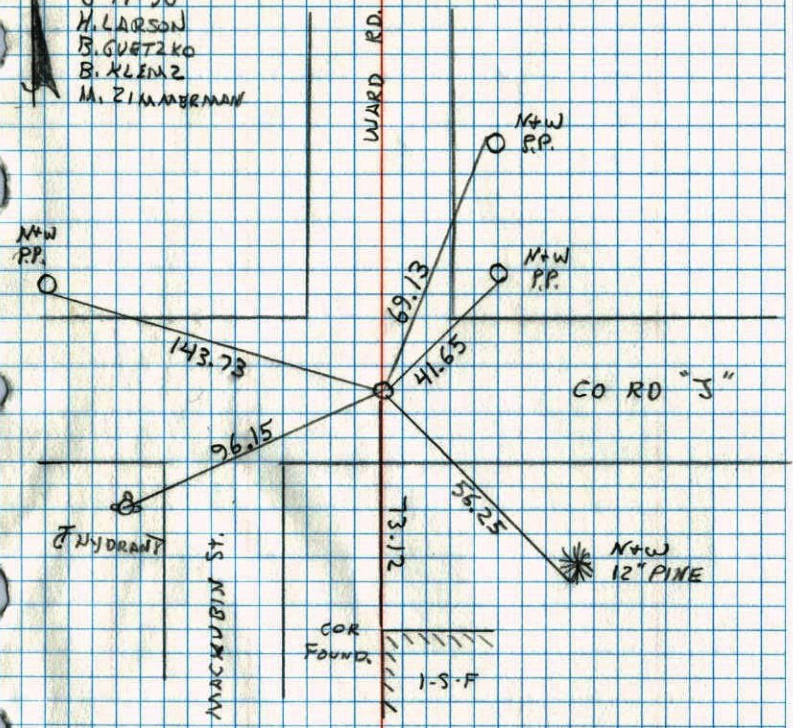
N.A.D.	1983	Co-ordinates
County	Project	Co-ordinates
Northing	<u>132427.2296</u>	*91
Easting	<u>537324.0583</u>	
State Plane Co-ordinates		
Y	_____	
X	_____	
Date	_____	

Revised date	By
7-8-86	D. ROSS
10-24-91	
3-16-98	

Minnesota State Plane Coordinates
South Zone
Y _____ X _____
_____, _____
County Surveyor Date
Registered Land Surveyor No. _____

SE
SW CORNER SECTION 31 T31 R22
RESET AND RETIED CAST IRON MONUMENT

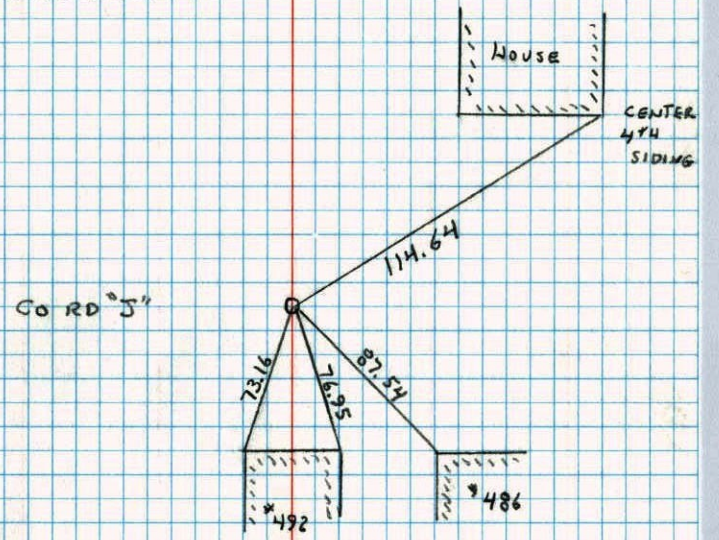
8-17-90
H. LARSON
B. GUETZKO
B. KLENZ
M. ZIMMERMAN



SOUTHEAST COR. SECTION 31 T31 R22
RETIED FOR CONSTRUCTION

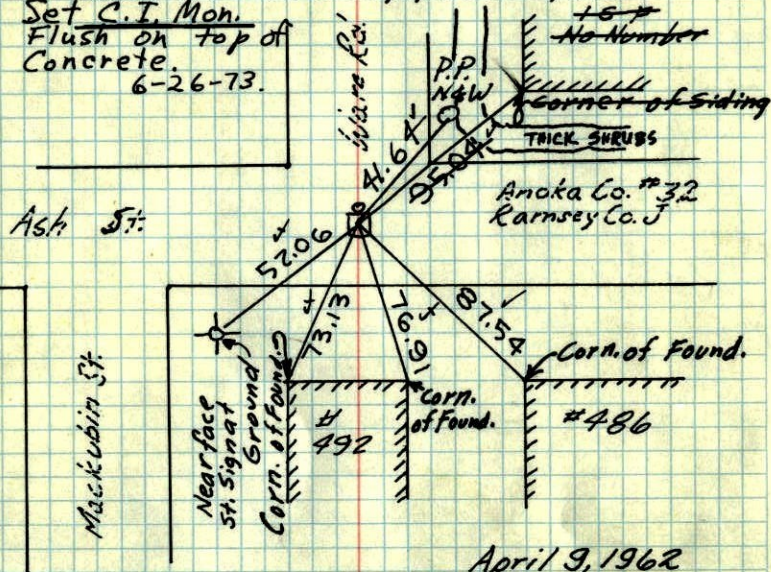
REMOVED
5-30-90

4-18-90
B. GUETZKO
J. STEVENSON



S.E. Cor. Sec. 31-31-22

found 4" Sq. Conc. Monument (top broken off)
 down 0.7' - 1/2" Iron pipe on N. face
 Set C.I. Mon.
 Flush on top of
 Concrete.
 6-26-73.



April 9, 1962

J. Oliver
 M.D. Anderson

Revised 6-16-65
 M.D. Anderson
 John Dunlop

TIE CHECK
 Aug. 20, 1976
 G. ADAMS,
 J. BRIEN
 J. STEPHENS

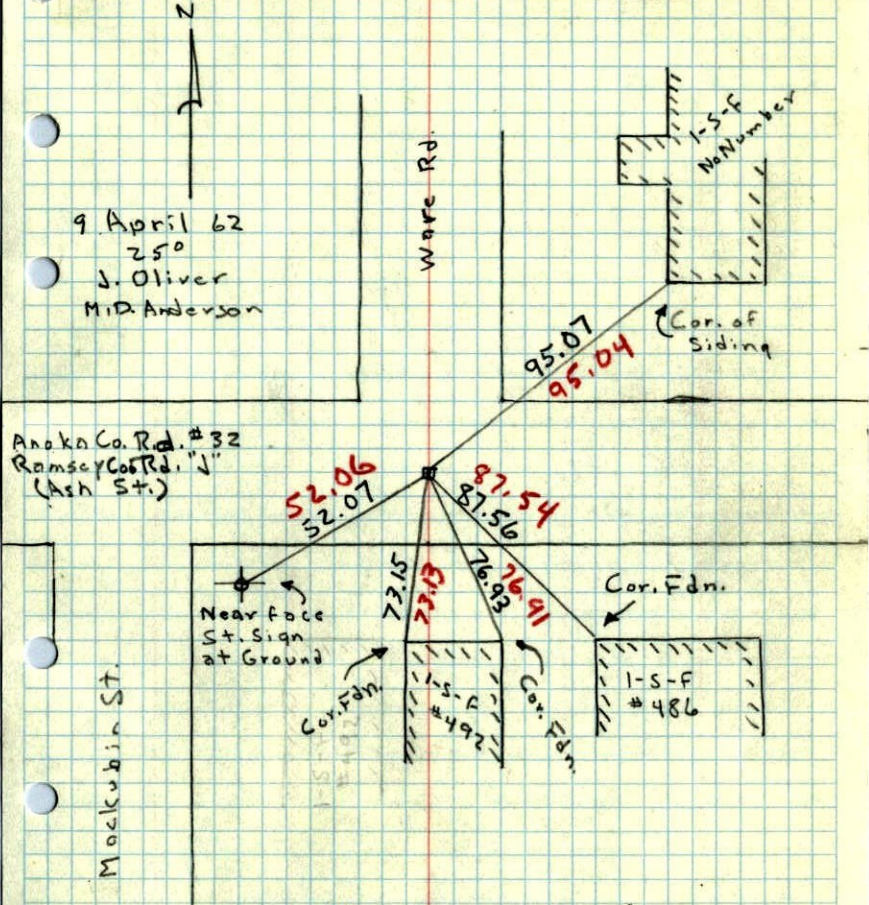
TEMPERATURE CORRECTED
 AND HORIZONTALLY
 TAPED MEASUREMENTS

TIE CHECK
 8-4-80
 B. STEPHENS
 P. ROSS
 P. HORNEY

ROLAND W. ANDERSON
 COUNTY SURVEYOR
 ANOKA COUNTY, MINNESOTA

SE Cor. Sec. 31, T 31, R 22

Found 4" Sq. Conc. Mon. with Top Broken off
 down 0.7' - Set 3/4" I.P. on No. Side. Flush with Mon.



9 April 62
 250
 J. Oliver
 M.D. Anderson

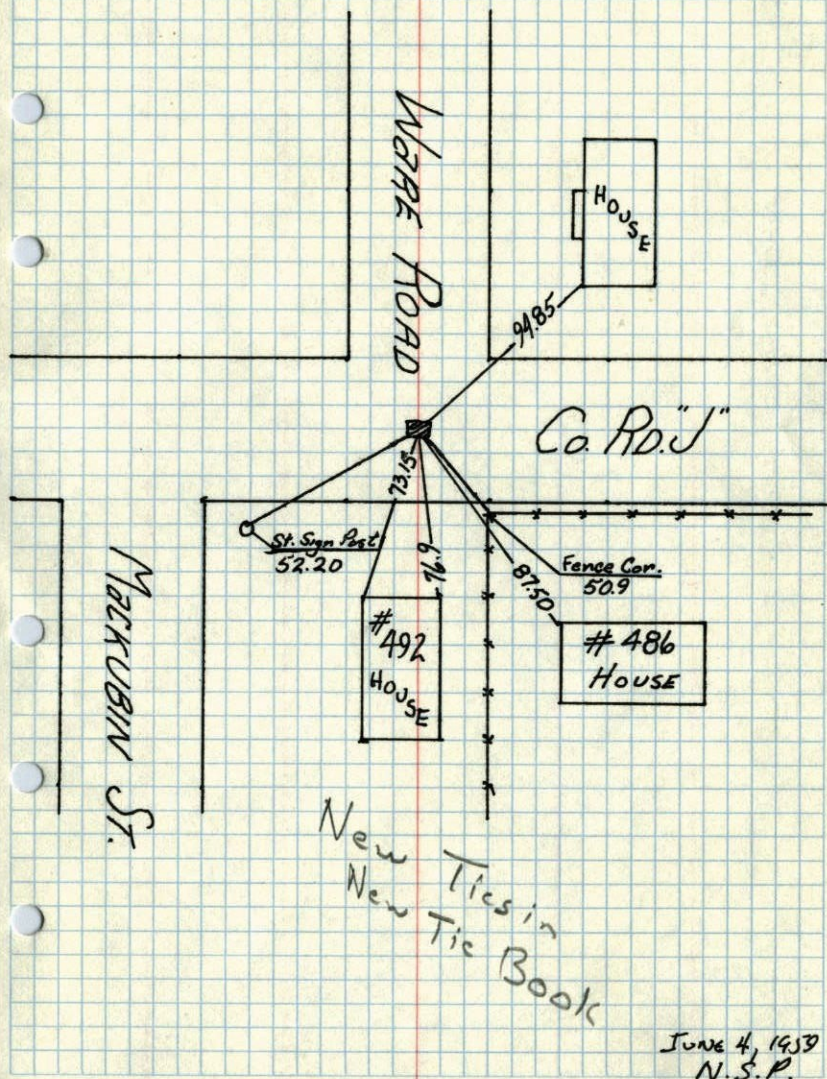
Anoka Co. Rd. #32
 Ramsey Co. Rd. "J"
 (Ash St.)

Mackubin St.

195942

S.E. CORNER OF SEC. 31, T31, R22

4" SQUARE Stone Mon. 1.0' Deep

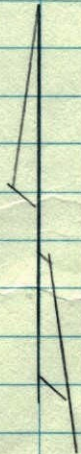
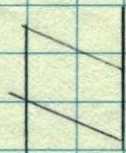


June 4, 1933
N.S.P.

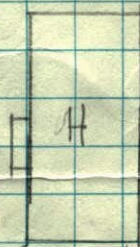
S. E CORN SEC 31-31-22

4" SQUARE STONE MONUMENT 1.0' DEEP

June 4, 1959
N.S.P.



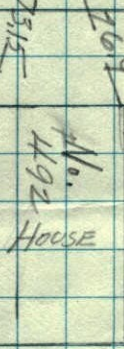
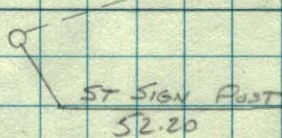
WARE ROAD



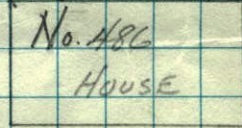
Co Rd "J"

58.76

MACKUBIN ST



FENCE CORN 50.9



75.15

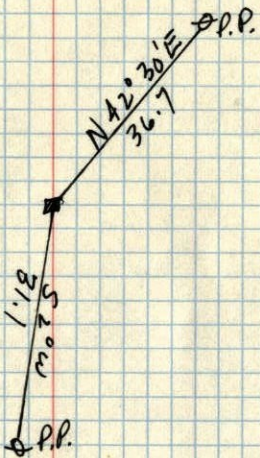
70.9

87.50

1944

S.E. SEC. 31, T 31, R 22

CONC. MON
DOWN .6



TIES
GONE

OCT 28, 1944
CARTWRIGHT