

# CERTIFICATE OF LOCATION OF GOVERNMENT CORNER

County of Anoka

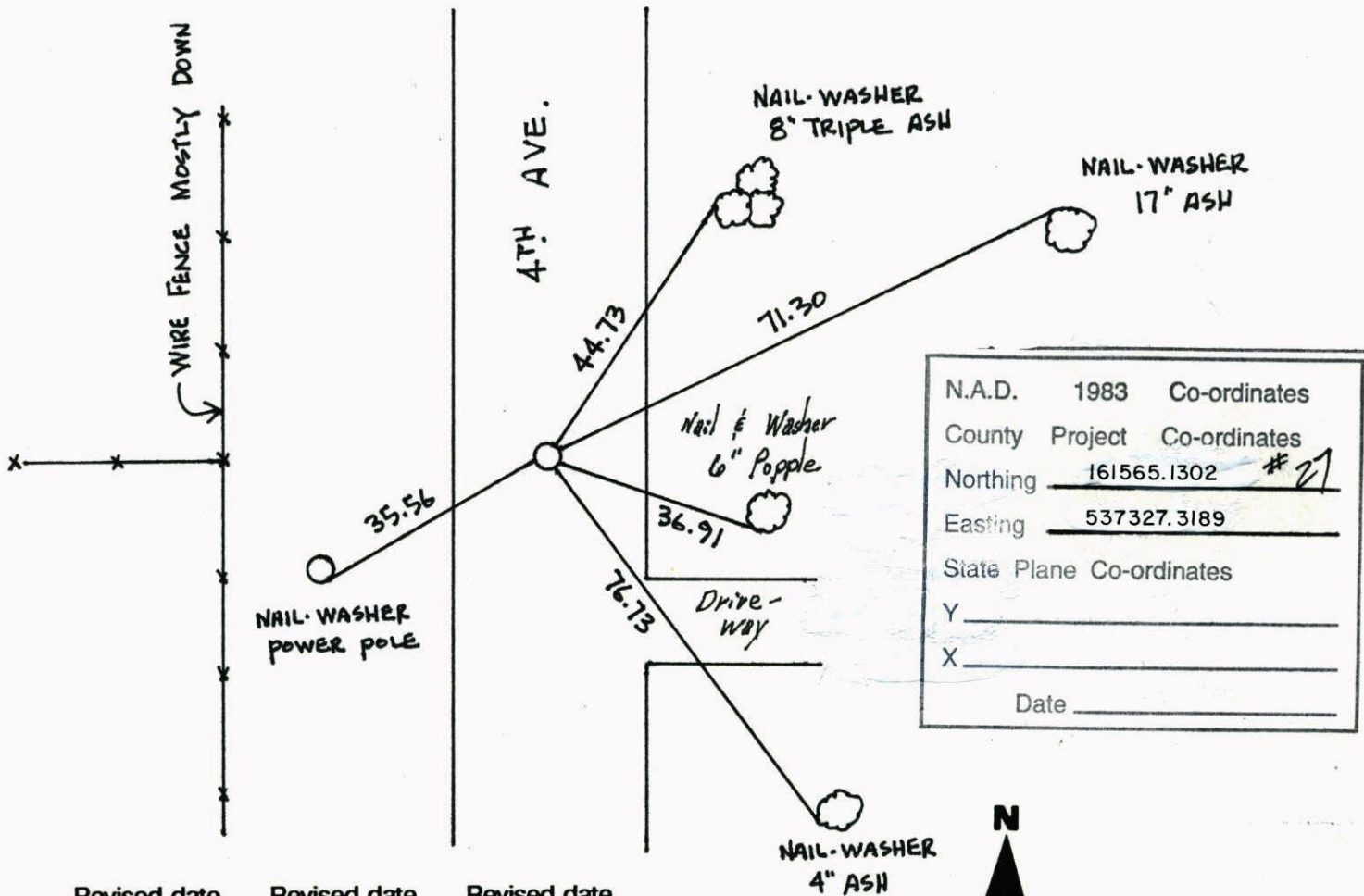
State of Minnesota

WEST 1/4 Corner of Sec. 5 Township 31 Range 22

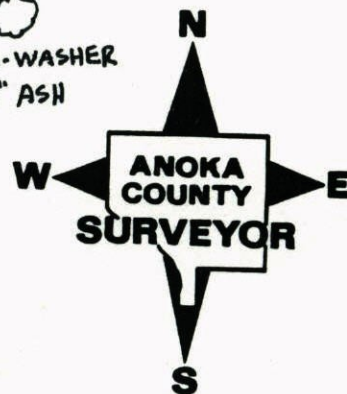
I hereby certify that on the 20<sup>TH</sup> day of MAY, 19 63, I found the described corner which was evidenced by AREA RESURVEY

and I further certify that to perpetuate the location of said corner, I did, at the exact location thereof, place a permanent marker consisting of CAST IRON MONUMENT

which reference or witness monuments are located in the manner following:



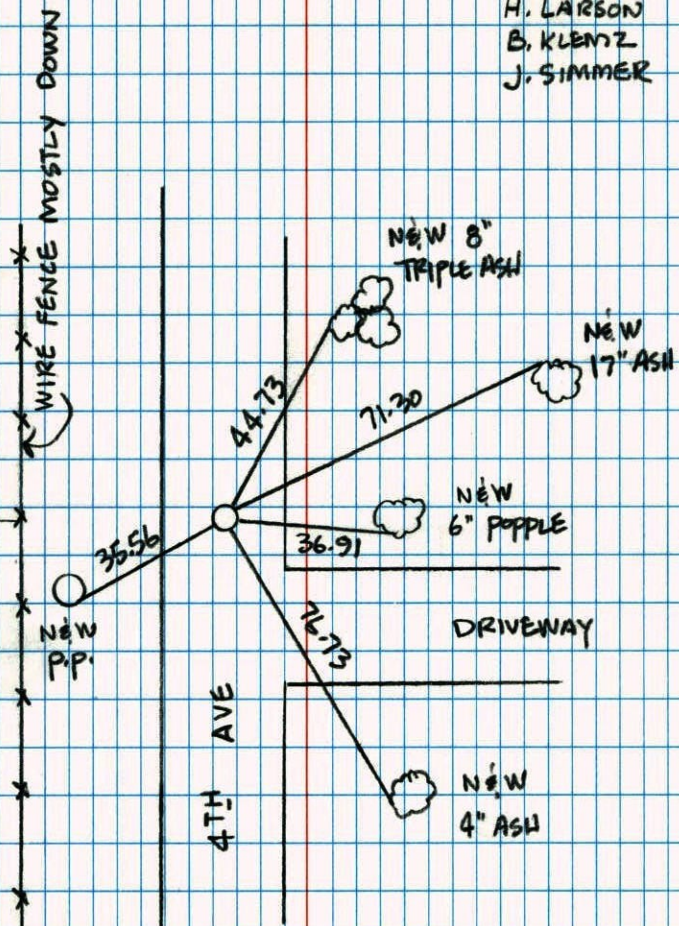
Revised date	Revised date	Revised date
5-20-63	1-26-98	
6-14-73		
8-17-76		
6-2-83		
7-18-86		
3-6-89		
6-28-91		



WEST 1/4 COR. SEC. 5 T31 R22

RETIED CAST IRON MONUMENT

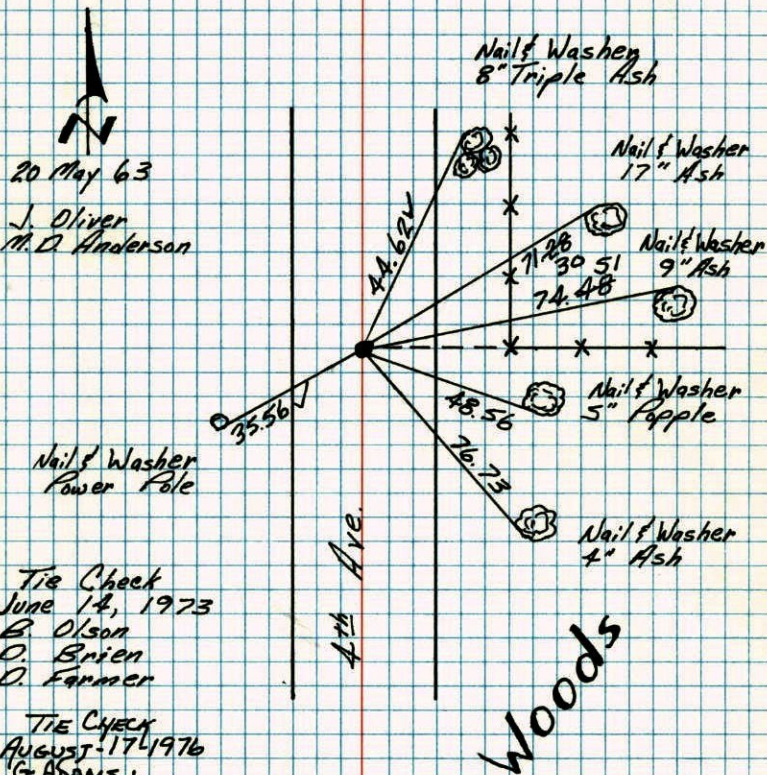
1-26-98

H. LARSON  
B. KLENTZ  
J. SIMMER

W 1/4 Cor Sec 5, T31, R22

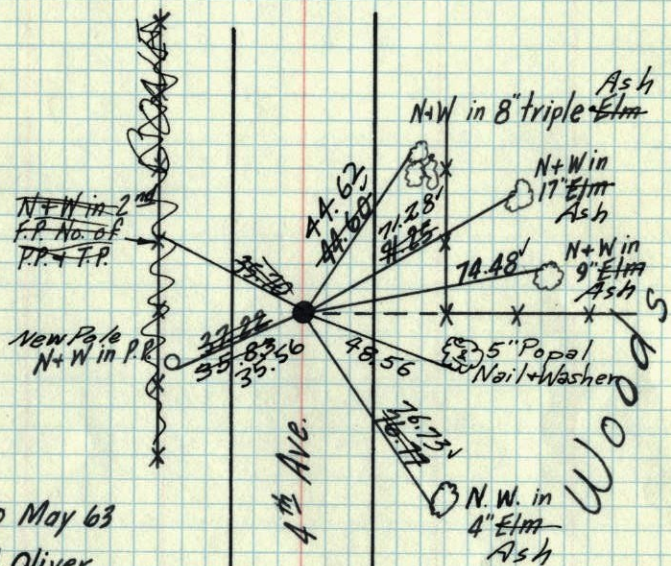
Set Cast Iron Monument From Resurvey

(Down 0.6)

Replaced With Removable Top Cast Iron Monument.  
6-14-73Nail & Washer  
Power PoleTIE CHECK  
June 14, 1973  
B. Olson  
D. Brien  
D. FarmerTIE CHECK  
AUGUST-17-1976  
G. ADAMS  
S. BRIEN  
A. STEPHENSTIE CHECK  
7-30-80  
B. STEPHENS  
P. ROSS  
P. HORNBYTEMPERATURE CORRECTED  
AND HORIZONTALLY  
TAPED MEASUREMENTSROLAND W. ANDERSON  
COUNTY SURVEYOR  
ANOKA COUNTY, MINNESOTA

1973<sup>16</sup>  
W 1/4 Cor. Sec. 5 T.31, R. 22

Set Cast Iron Monument from Resurvey  
(Down 0.6')  
Replaced with removable top  
Cast Iron Monument.  
6-14-73.



20 May 63  
J. Oliver  
M. D. Anderson

TEMPERATURE CORRECTED  
AND HORIZONTALLY  
TAPED MEASUREMENTS

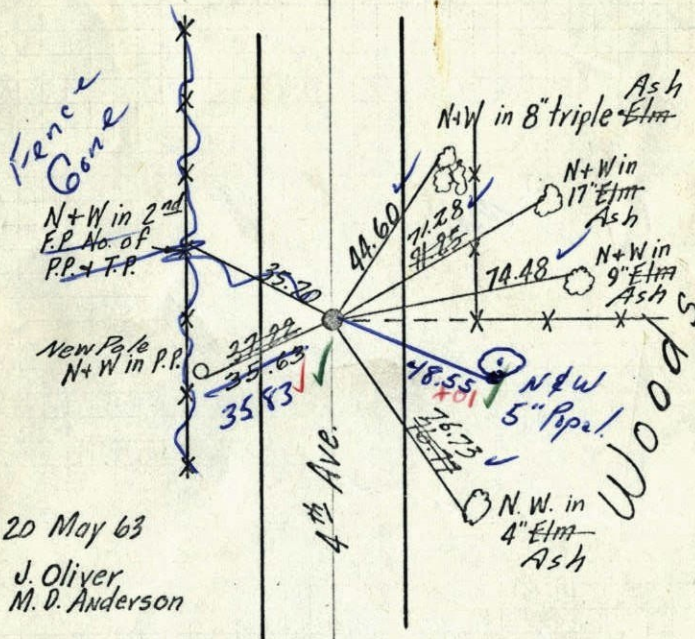
Tie Check  
Aug. 13, 1969  
R. A. Olson  
R. Brien

ROLAND W. ANDERSON  
COUNTY SURVEYOR  
ANOKA COUNTY, MINNESOTA

Tie Check  
June 17, 1973  
B. Olson  
D. Brien  
D. Farmer

1969<sup>16</sup>  
W 1/4 Cor. Sec. 5 T.31, R. 22

Set Cast Iron Monument from Resurvey  
(Down 0.6')



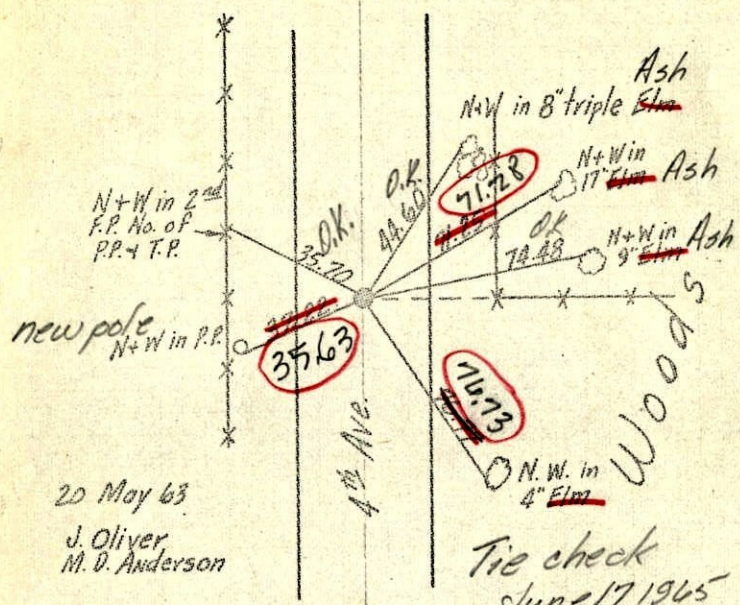
20 May 63  
J. Oliver  
M. D. Anderson

TEMPERATURE CORRECTED  
AND HORIZONTALLY  
TAPED MEASUREMENTS

ROLAND W. ANDERSON  
COUNTY SURVEYOR  
ANOKA COUNTY, MINNESOTA

8-13-69  
Tape #5 ✓  
85' ✓

1965  
 W 1/4 Cor. Sec. 5 T.31, R.22  
 Set Cast Iron Monument from Resurvey  
 (Down 0.6')



20 May 63  
 J. Oliver  
 M. D. Anderson

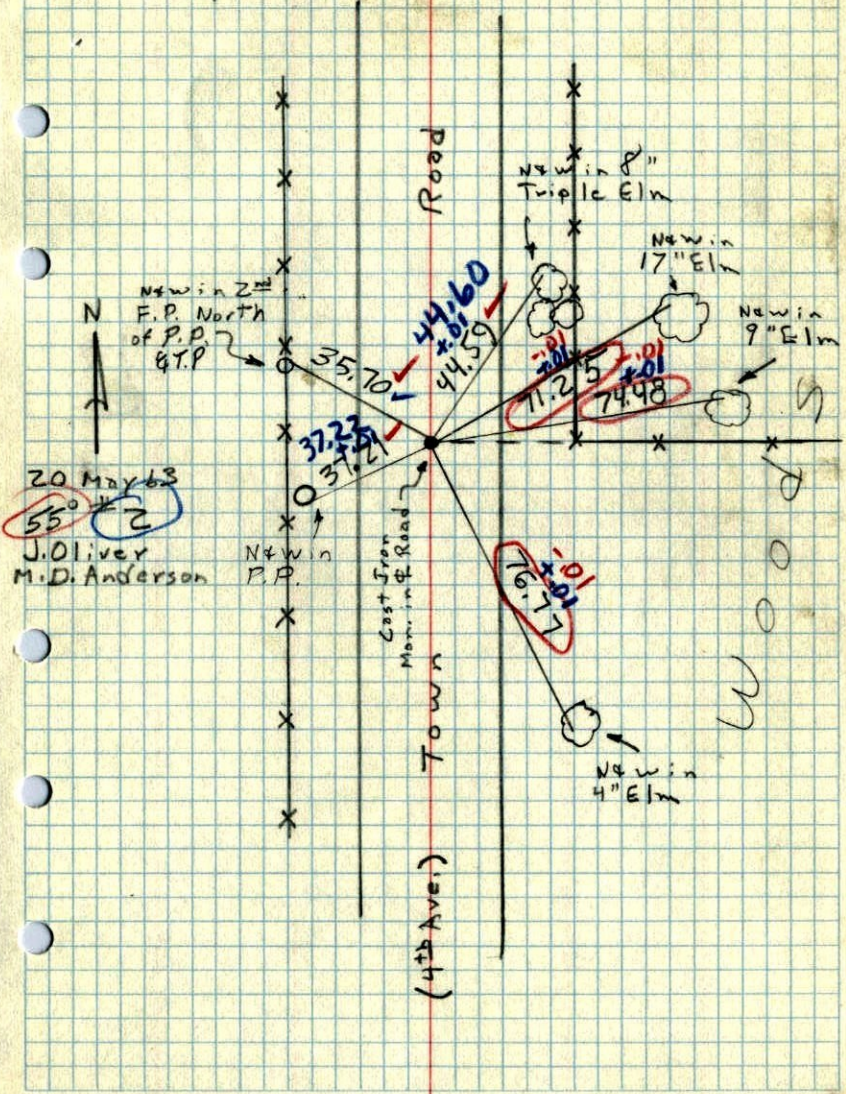
TEMPERATURE CORRECTED  
 AND HORIZONTALLY  
 TAPED MEASUREMENTS

Tie check  
 June 17, 1965  
 M.D.A.  
 V.D. 720  
 H.L. #5  
 R.C.

ROLAND W. ANDERSON  
 COUNTY SURVEYOR  
 ANOKA COUNTY, MINNESOTA

entered

1963  
 W 1/4 Cor. Sec. 5, T31, R22  
 Set Cast Iron Monument from  
 resurvey. (Down 0.6')



20 May 63  
 55° #2  
 J. Oliver  
 M. D. Anderson

WOODS