

CERTIFICATE OF LOCATION OF GOVERNMENT CORNER

County of Anoka

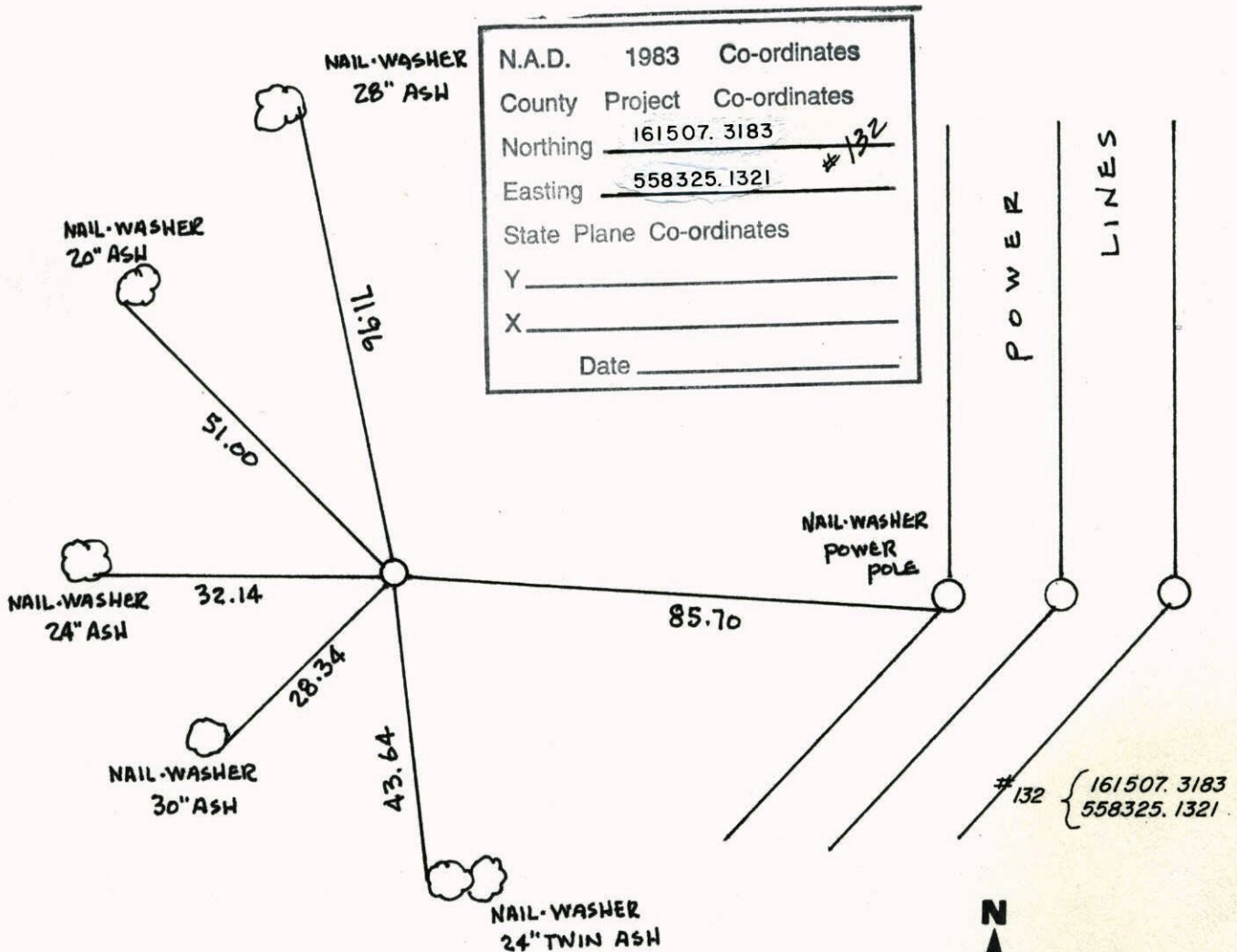
State of Minnesota

EAST 1/4 Corner of Sec. 2 Township 31 Range 22

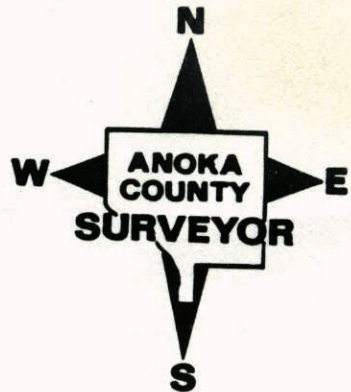
I hereby certify that on the 12TH day of JUNE, 19 62, I found the described corner which was evidenced by 4" SQUARE CONCRETE MONUMENT

and I further certify that to perpetuate the location of said corner, I did, at the exact location thereof, place a permanent marker consisting of CAST IRON MONUMENT
SIGN & POST ON WEST SIDE

which reference or witness monuments are located in the manner following:



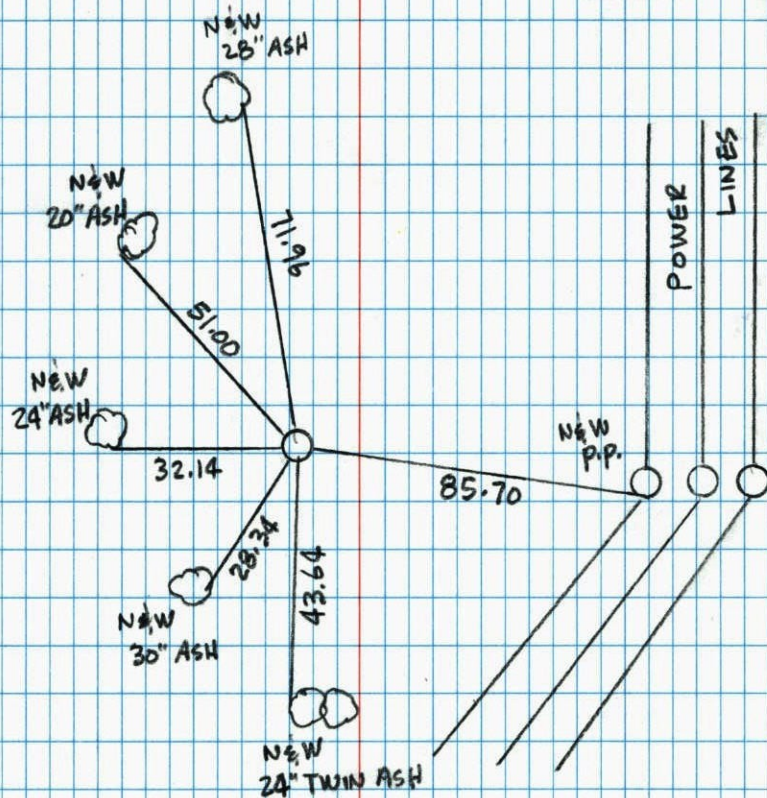
Revised date	Revised date	Revised date
12-25-90		
11-13-91		
4-10-98		



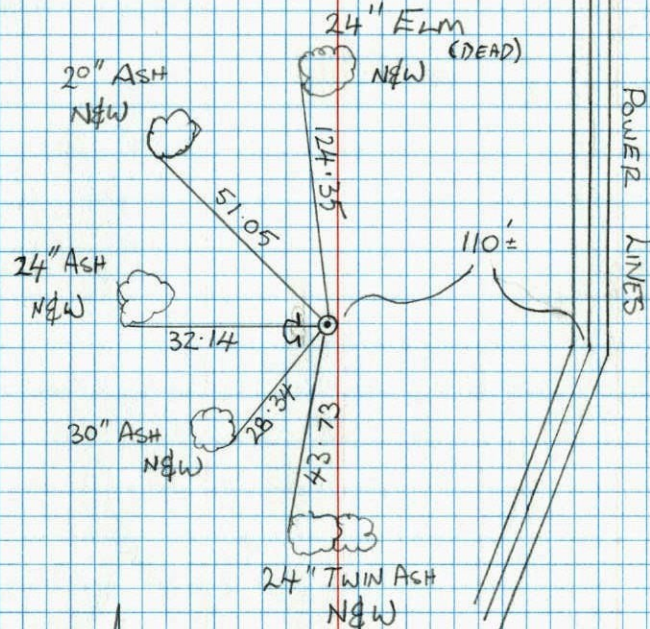
EAST 1/4 COR. SEC. 2 T 31 R 22

RETIED CAST IRON MONUMENT

SIGN & POST W. SIDE

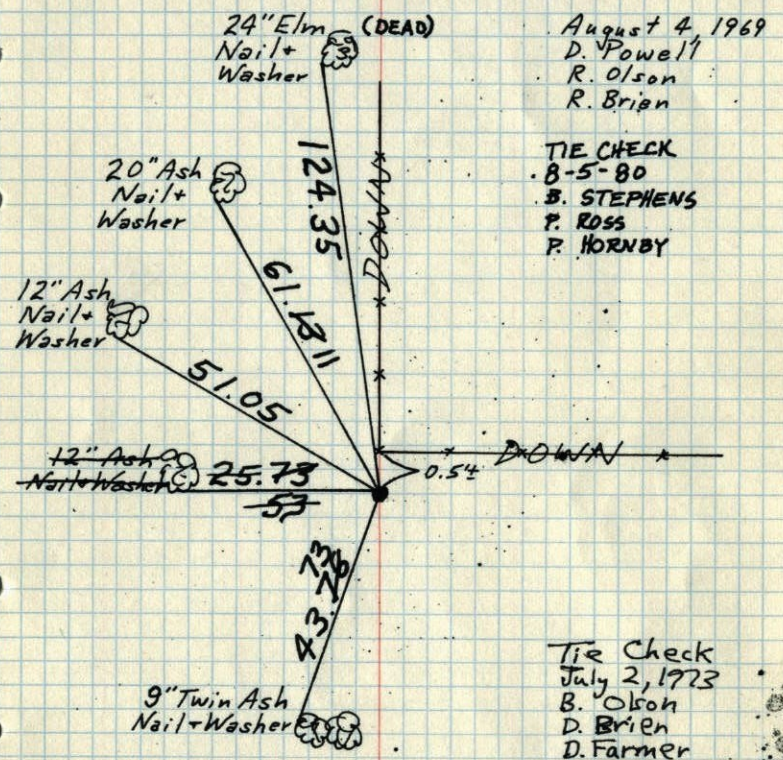
4-10-98
H. LARSON
B. KLEMZ
J. SIMMER

RETE EAST 1/4 S 2 T 31. R. 22

CAST IRON MONUMENT
SIGN & POST ON WEST SIDEB. KLEMZ
M. STEWART
11-13-91

E 1/4 Cor. Sec. 2-T31-R22

Removed badly leaning Concrete Mon. up 1.5'±
and replaced with Cast Iron Monument up 0.1'±.
1/4" Iron Pipe on South Side up 1.5'±.



August 4, 1969
D. Powell
R. Olson
R. Brien

TIE CHECK
8-5-80
B. STEPHENS
P. ROSS
P. HORNBY

Tie Check
July 2, 1973
B. Olson
D. Brien
D. Farmer

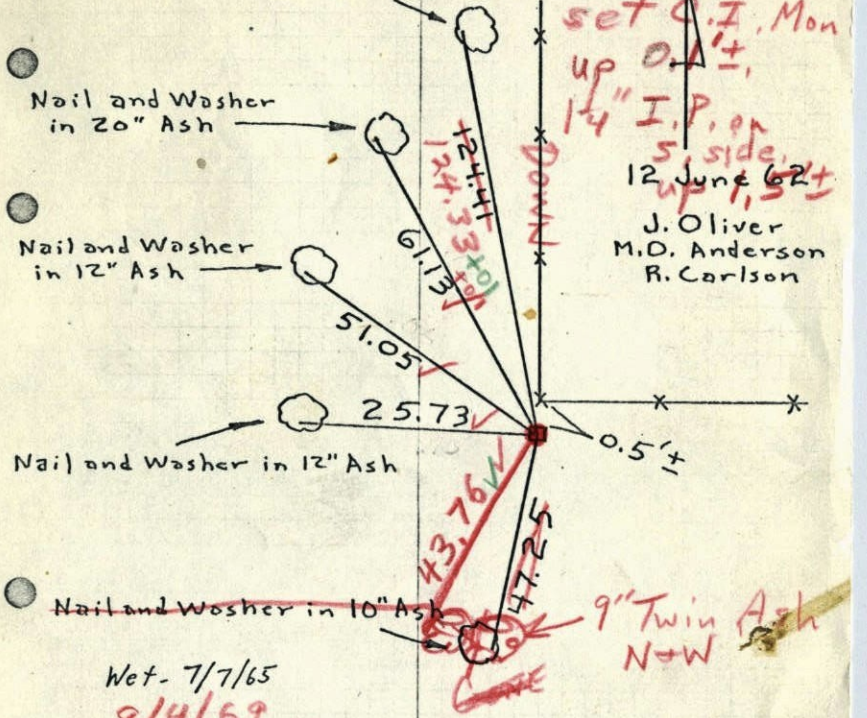
TIE CHECK
MAY 16, 1977
R. CANNERUD
D. DAHL
S. BRIEN

TEMPERATURE CORRECTED
AND HORIZONTALLY
TAPED MEASUREMENTS

ROLAND W. ANDERSON
COUNTY SURVEYOR
ANOKA COUNTY, MINNESOTA

E 1/4 Cor. Sec. 2, T31, R22

ound 4" Sq. Conc. Mon. leaning- Straightened
and checked old Ties - 1/4" I. P. on No. Side
Concrete leaning badly up 1.5'±
Nail and Washer in 24" Elm **Removed Cono. +**



set C.I. Mon up 0.1'±
1/4" I.P. on 5' side up 1.5'±
12 June 62±
J. Oliver
M.O. Anderson
R. Carlson

Wet- 7/7/65
8/4/69
✓ #5-7821
D. Powell
R. Olson
R. Brien

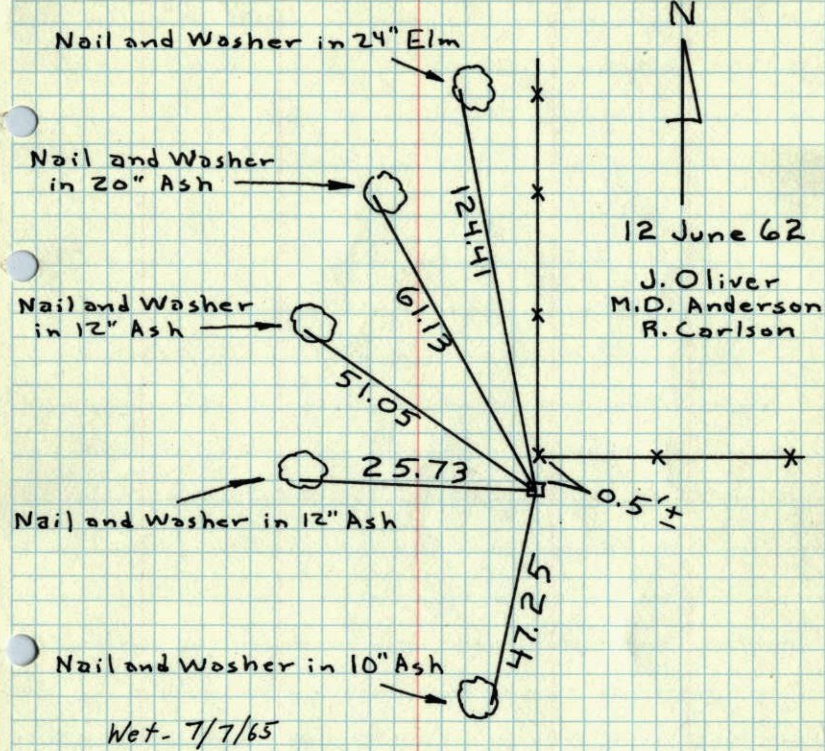
ROLAND W. ANDERSON
COUNTY SURVEYOR
ANOKA COUNTY, MINNESOTA

TEMPERATURE CORRECTED
AND HORIZONTALLY
TAPED MEASUREMENTS

1965 20

E 1/4 Cor. Sec. 2, T31, R22

Found 4" Sq. Conc. Mon. leaning - Straightened
and checked old Ties - 1 1/4" I.P. on No. Side

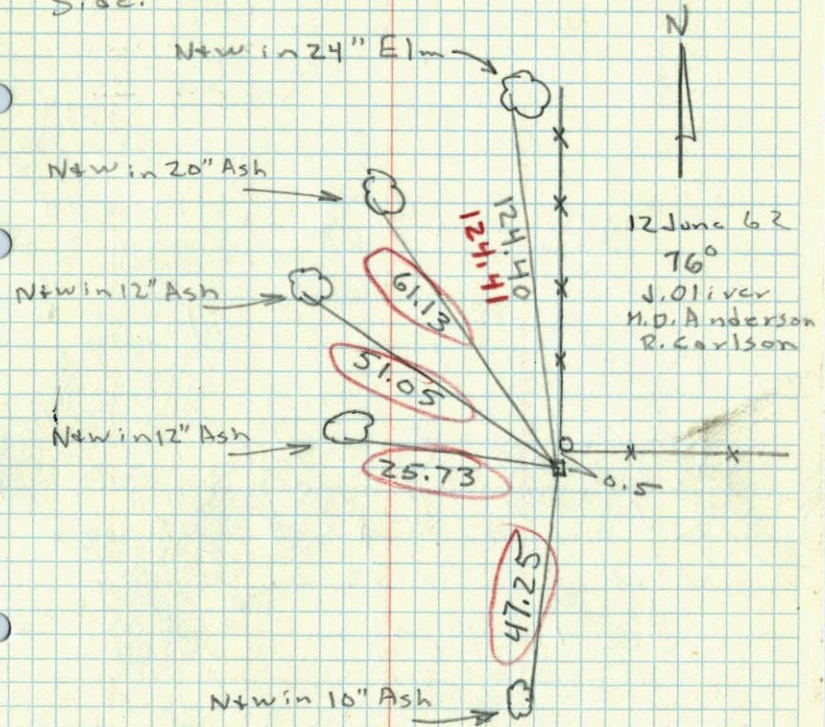


ROLAND W. ANDERSON COUNTY SURVEYOR ANOKA COUNTY, MINNESOTA
TEMPERATURE CORRECTED AND HORIZONTALLY TAPED MEASUREMENTS

19623

E 1/4 Cor. Sec. 2, T31, R22

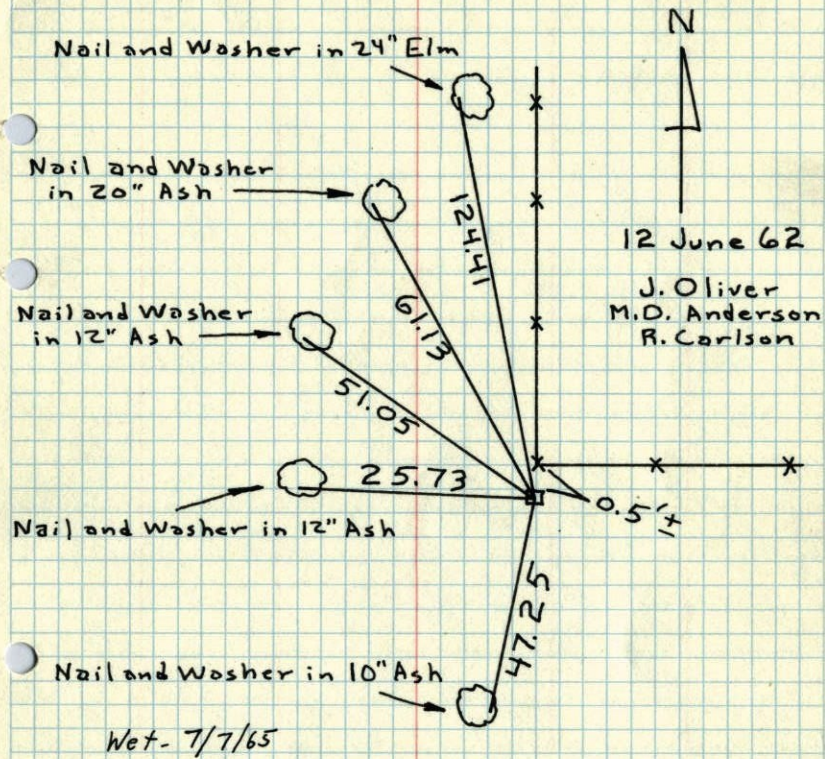
Found 4" Sq. Conc. Mon. leaning - Straightened
and checked old Ties - 1 1/4" I.P. on No. Side.



1965 20

E 1/4 Cor. Sec. 2, T31, R22

Found 4" Sq. Conc. Mon. leaning - Straightened
and checked old Ties - 1 1/4" I.P. on No. Side



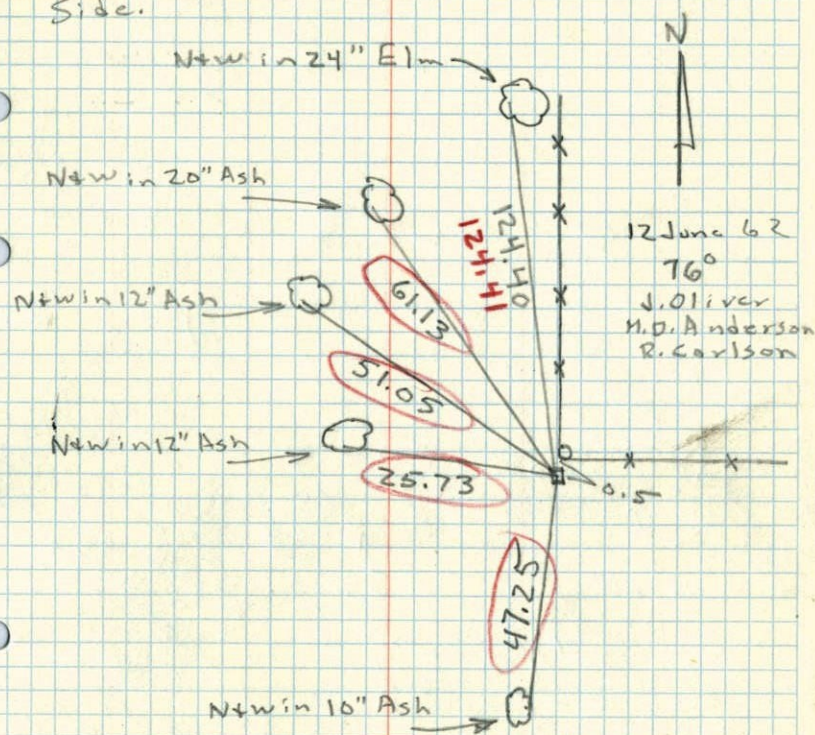
ROLAND W. ANDERSON
COUNTY SURVEYOR
ANOKA COUNTY, MINNESOTA

TEMPERATURE CORRECTED
AND HORIZONTALLY
TAPED MEASUREMENTS

19623

E 1/4 Cor. Sec. 2, T31, R22

Found 4" Sq. Conc. Mon. leaning - Straightened
and checked old Ties - 1 1/4" I.P. on No. Side.

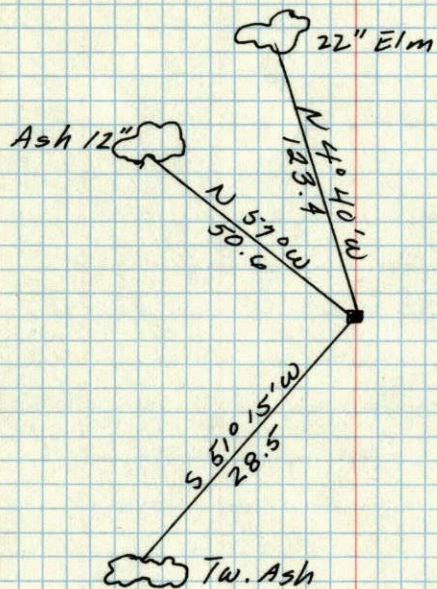


ROLAND W. ANDERSON
COUNTY SURVEYOR
ANOKA COUNTY, MINNESOTA

TEMPERATURE CORRECTED
AND HORIZONTALLY
TAPED MEASUREMENTS

1948 3

F 1/4 COR. OF. SEC 2, T 31, R 22
CONC. MON.



New Ties in
New Tie Books

Sept 7, 1948
CARTWRIGHT